

Photographs (by Lieutenant Colonel F.H.M. Burton?) of Burma, the Burmese Royal Family and the officers of the Burmah Campaign, in three albums

Publication/Creation

1885-1887

Persistent URL

<https://wellcomecollection.org/works/u9gqd4zz>

License and attribution

You have permission to make copies of this work under a Creative Commons, Attribution, Non-commercial license.

Non-commercial use includes private study, academic research, teaching, and other activities that are not primarily intended for, or directed towards, commercial advantage or private monetary compensation. See the Legal Code for further information.

Image source should be attributed as specified in the full catalogue record. If no source is given the image should be attributed to Wellcome Collection.



Wellcome Collection
183 Euston Road
London NW1 2BE UK
T +44 (0)20 7611 8722
E library@wellcomecollection.org
<https://wellcomecollection.org>

522

THE BURMA CAMPAIGN.
1885-6-7.



F. H. M. BURTON, M. S. DURH., M. R. C. S.

SURGEON, ARMY MEDICAL STAFF.

MAC TRACHER
BOOKSELLER
AND
STATIONER
BRIGHTON

522

ဖရဲဆစ်၊ ဟင်းရီ၊ မော်ရဆဲ၊ ဒိုက်တံ။

ဒိုက်ဂြဲဆေးထွားရှင်ဆိုင်သောဆေးထွားကြီး။

ဗန်းမော်မြို့။

၁၀၀၆၇။

RANC 522 |

1 of 3

SAPPHIRE OF 630 CARATS.

FIND AT BURMA RUBY MINES.

RANGOON, May 30.—The Burma Ruby Mines Co. have just found in their mines at Mogok a remarkable sapphire weighing 630 carats. It is the best stone discovered by the company since the "Peace" ruby was found in 1928.—*Exchange Telegraph.*

WHO ARE THE OWNERS?

The flotation of the Burma Ruby Mines by N. M. Rothschild and Sons in 1889 was one of the high spots in the mining world during the latter part of last century. It was the only ruby mine in existence, but the high rent payable to the Government of India brought the company to an end in 1925, when resolutions to wind up voluntarily were passed. During its 36 years of life, the Indian Government received no less than £550,000, while the company's portion amounted to only £150,000. The last dividend paid was $4\frac{1}{4}$ per cent. in 1919, this following a blank period of six years.

As the company passed resolutions to wind up, it would be interesting to learn who are the present owners of the property.

POLICY

this one-sided indebted-
ent during April and May
when large amounts of short-
were suddenly withdrawn
and for a time it seemed as
if German currency had

vention in the shape of a
of credit to a rest thi
restore confidence w
and these credit
own shortly

POLICY

this one-sided indebted-
ent during April and May
when large amounts of short-
were suddenly withdrawn
and for a time it seemed as
if German currency had

vention in the shape of a
of credit to a rest thi
restore confidence w
and these credit
own shortly

POLICY

this one-sided indebted-
ent during April and May
when large amounts of short-
were suddenly withdrawn
and for a time it seemed as
if German currency had

vention in the shape of a
of credit to a rest thi
restore confidence w
and these credit
own shortly

at the end of the year of £200,000.
The Turin factory continued to make highly satisfactory progress.

The company's blue asbestos mines had been fully occupied, but in the case of amosite it was necessary to slacken production towards the end of the year. Amosite was a fibre differing materially from the known grades of asbestos on the market. It was new to the industry, and it was to be expected, therefore, that it would take time to introduce and extend its use among manufacturers.

As to the current year, they were satisfied with their trading in view of conditions prevailing at present. A portion of their business being closely identified with shipbuilding, engineering, and allied enterprises, must naturally reflect the conditions prevailing in those industries. The outlook in this direction was not entirely free from difficulties, but the company, by reason of its financial and raw material resources, and by the quality of its products, was well placed to maintain its position and to participate in the benefits which must follow a revival in industry.

The report and accounts were unanimously adopted.

ILFORD, LTD.

An extraordinary general meeting of the shareholders of the company was held at the offices of Messrs. Kalidjerov & Co., Ltd., on the 14th day of August, 1920, for the purpose of passing resolutions in relation to the proposed dividend. The following resolutions were passed, resolved that a sum of £25,000 be transferred to the credit of general reserve, and that the balance of the shares account be distributed among the shareholders, that these sums, together with a sum of £1,602, being part of the balance on profit and loss account, be declared as a dividend, free of tax, on the issued shares in the company, and that such dividend be distributed to the shareholders on the 15th day of August, 1920, on the paid-up shares of 2s. each.

Colonel J. M. Burt,
Chairman of the Company (in the absence of the chairman, he acted as chairman) (being duly authorized) through his solicitors, Messrs. Burt, Messers, & Co., Ltd., of 15, Abchurch Lane, London, E.C. 4, has caused to be signed to the Registrar of Companies, London, the following statement of the dividend payable to the shareholders of the company on the 15th day of August, 1920, on the paid-up shares of 2s. each.

Colonel J. M. Burt,
Chairman of the Company (in the absence of the chairman, he acted as chairman) (being duly authorized) through his solicitors, Messrs. Burt, Messers, & Co., Ltd., of 15, Abchurch Lane, London, E.C. 4, has caused to be signed to the Registrar of Companies, London, the following statement of the dividend payable to the shareholders of the company on the 15th day of August, 1920, on the paid-up shares of 2s. each.

Colonel J. M. Burt,
Chairman of the Company (in the absence of the chairman, he acted as chairman) (being duly authorized) through his solicitors, Messrs. Burt, Messers, & Co., Ltd., of 15, Abchurch Lane, London, E.C. 4, has caused to be signed to the Registrar of Companies, London, the following statement of the dividend payable to the shareholders of the company on the 15th day of August, 1920, on the paid-up shares of 2s. each.

Colonel J. M. Burt,
Chairman of the Company (in the absence of the chairman, he acted as chairman) (being duly authorized) through his solicitors, Messrs. Burt, Messers, & Co., Ltd., of 15, Abchurch Lane, London, E.C. 4, has caused to be signed to the Registrar of Companies, London, the following statement of the dividend payable to the shareholders of the company on the 15th day of August, 1920, on the paid-up shares of 2s. each.

Colonel J. M. Burt,
Chairman of the Company (in the absence of the chairman, he acted as chairman) (being duly authorized) through his solicitors, Messrs. Burt, Messers, & Co., Ltd., of 15, Abchurch Lane, London, E.C. 4, has caused to be signed to the Registrar of Companies, London, the following statement of the dividend payable to the shareholders of the company on the 15th day of August, 1920, on the paid-up shares of 2s. each.

Colonel J. M. Burt,
Chairman of the Company (in the absence of the chairman, he acted as chairman) (being duly authorized) through his solicitors, Messrs. Burt, Messers, & Co., Ltd., of 15, Abchurch Lane, London, E.C. 4, has caused to be signed to the Registrar of Companies, London, the following statement of the dividend payable to the shareholders of the company on the 15th day of August, 1920, on the paid-up shares of 2s. each.

Colonel J. M. Burt,
Chairman of the Company (in the absence of the chairman, he acted as chairman) (being duly authorized) through his solicitors, Messrs. Burt, Messers, & Co., Ltd., of 15, Abchurch Lane, London, E.C. 4, has caused to be signed to the Registrar of Companies, London, the following statement of the dividend payable to the shareholders of the company on the 15th day of August, 1920, on the paid-up shares of 2s. each.



A QUEEN'S GOLDEN COFFIN.

GOLDEN COUCH & EIGHT UMBRELLAS.

RANGOON, Thursday.

The remains of ex-King Theebaw's Queen Supayalat, the last of the Alompon dynasty, were buried with great pomp yesterday in the mausoleum in the Cantonment Gardens, Rangoon.

The Queen was buried in a golden coffin resting on a golden couch, on which were eight royal umbrellas. The cortège included 64 bullock carts containing food and a huge drum was beaten at intervals. The catafalque was carried by 16 persons. Following this was the royal couch without the body, and next followed the Queen's royal robes carried by four maids of honour.

Afterwards came the body, carried by 16 members of the ex-Royal Family. Ninety Burmese monks recited the burial service.

Sir Spencer Harcourt Butler (the Governor) and his staff and leading officials occupied a special enclosure at the Gardens. Indian artillery fired a salute of 21 guns.—Exchange.

**“PLAYING WITH
WAR.”**

**AUTHORITATIVE MOSUL
ARTICLE.**

**MR. CECIL HARMSWORTH'S
ANALYSIS.**

In *The Daily Mail* of Monday will appear a most important article on the question of Mosul and the Mesopotamian Mandate by Mr. Cecil Harmsworth, formerly Under-Secretary for Foreign Affairs. Mr. Harmsworth entitles his article “Playing with War.”

No one can speak with more authority on the subject than Mr.



F. H. Mercer on Burton, M. R. C. S.
 $\frac{5}{8}$ Field Hospital

ONE ANNA Force
Burmah - Rhamo

26/3/86
Map of

BURMA

American Baptist Mission Press

No. 1, 35th Street, Rangoon.

Feb. 2, 1922

THE DAILY MIRROR

Daily Mirror

THURSDAY, FEBRUARY 2, 1922.

THE DAILY MIRROR

Feb. 2, 1922



Thank
2
Sept
1922
"The Daily Mail"



LORD BIRKENHEAD speaking at the luncheon at which he was entertained by the New Members' Coalition group yesterday, when he made a striking speech. *(Daily Mail)*



WATER PAGEENTRY FOR THE PRINCE.—The wonderful Royal barge from which the Prince of Wales witnessed the Burmese boat races during his visit to Mandalay. Singing boat crews entertained the party while they were on the water.

striking embroidery in black, steel and vermilion, composes the practical cape and smart frock which is belted with cut steel.

OUR.

IF A GIRL BE NEITHER DARK NOR FAIR

She Should Wear

all good browns, autumn reds (such as rowanberry and tawny chrysanthemum shades), blue, and various rose tints. These all become the "nut brown maid." She who is mouse-like or nondescript in colouring should favour certain blues, such as lobelia in a mist-grey background, heather purple, and various indefinite pinks, greens, greys, and mole shades.

THE NUTRITIOUS WALNUT.

NOT all women realise the food value that walnuts possess. They exceed potatoes, milk, macaroni, and eggs in protein, the tissue-builder and repairer. In calories walnuts lead above the majority of foods, including the above, plus cheese, sugar, mackerel, beef, veal, ham, and so on. The crisp, delicious flavour of walnuts and the part they play in making other foods attractive render them invaluable to the housewife. Walnuts may be used for stuffing fowls, in meat substitutes, in desserts, in cakes, and in salads.

A DELICIOUS STUFFING.

An excellent walnut poultry stuffing consists of the liver and heart of one or two fowls, 2oz. of stale bread, one onion chopped fine, 2oz. walnuts chopped fine, rice, salt, pepper. Cook the livers in a little dripping until they become tender, and chop them finely. Soak the bread in milk or water, squeeze dry in a cloth, and beat up with a fork; add the rest of the ingredients. Moisten with liquid in which the livers were cooked or with a beaten egg, being careful not to make the mixture too moist, as stuffing is always better if it is a little dry. Stuff the fowl with this and roast in the usual manner.

get it for him if he'd give me his address."
"And did you?" questioned the police official.

Sam blushed. "Never you mind about that," he replied brusquely. "You ought to be jolly glad to know where to lay hands on him."

"Certainly I'm obliged to you, Mr. Dawlish. May I use the telephone?"

When he came back he said he must be returning to London immediately, and if there was no train perhaps he could get a car somewhere. Lucien offered his.

Sir Winthrop accepted an invitation to stay on to lunch.

"What am I to do?" Bill asked. "Am I to go with you, inspector?"

Lucien drew in his breath sharply and made a sign of protest, but said nothing. Gridd took a cigar from the box Sam Dawlish proffered him. He lit it before reply-

larly as regarded the mental derangement of criminals. He appeared to regard it as a pleasant table topic.

But there was no satisfaction in Nora's heart that the man who had injured her dead self might have been driven by remorse to slay the partner of his misdeed. She thought of him as she had chanced

bit—possessed of a satisfying fulness of taste that makes you realise in a second how really good it is.

Make a point of buying a bottle, or at least a tin of Brand's to-day.

"Buy a tin of Brand's to-day and surely keep the 'flu away."

Sold at all Chemists, Stores and good Grocers.
Bots., 2/9; Tins, 2/6.

BRAND & CO., LTD., Mayfair Works, Vauxhall, London, S.W.



The famous "WYCOMBE" SUPER 92/6 EASY CHAIR

The finest chair value offered. Get illustrated lists & patterns of high grade Tapestries, silk Damasks, Velvetens, post free. No shops. Direct supply only.
BUCKS FURNITURE MANUFACTURING CO.
92, Belfer Street, London.

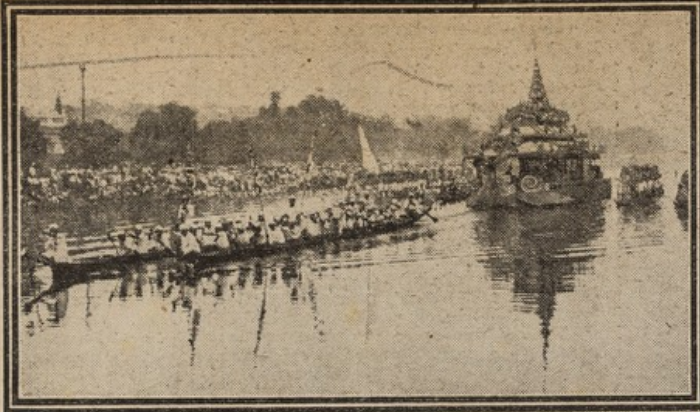
JUMPERS! JUMPERS!!

Artificial Silk—Apr. Shades	4/11	per 4 lb.
Mingled Shades	5/3	" 4 lb.
Sports Wool	4/6	" 4 lb.
Fingering	4/11	" 4 lb.
White Vest Wool	9d.	" oz.

Write for samples to—
CITY TEXTILE SUPPLY STORES,
45, MASON'S AVENUE, LONDON, E.C.2.

The Famous Barker O'fer 660,000 yds. BALLOON CLOTH

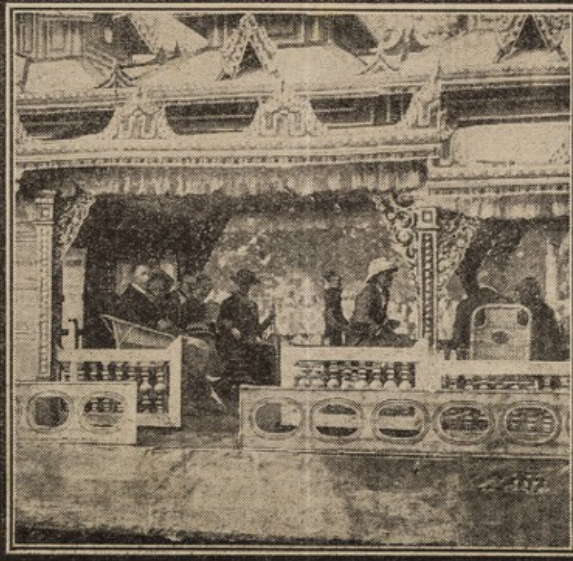
Over a million yards of this fine woven fabric have now been sold to Barker customers. It makes up delightfully, being soft in texture like a Madapolam. For furnishing and underwear. Special quotations for shipping. 44 inches wide. Per yard **1/6 1/2**



The royal barge being towed and escorted by strange-looking Burmese craft.



Arms and legs are used to ply the oars that propel the Burmese boats.



BURMESE PAGEANTRY.—The Prince of Wales seated in the royal barge, of quaint and beautiful design, at the boat races held on the moat outside the fort at Mandalay.

"The Daily Mirror"

*Photo by [unclear]
1923*

KO

House, London, E.C. 4.

AWAY
L'S FAMOUS
BEDROOM
OUTFIT



NEW HAIR
After 34 Years
BALDNES

...the face of it appears a
...ible, but it is only one
...y instances I have had
...evlous effects result-
...the use of this Hair
...The following letter
...tlerman who had been
...care quotes the fact I
...ve:-
...of your Hair Formula
...closed P.O. for same.
...ack, and I have quite a
...S.

CHY, LIFELESS
TE BALDNES.

...ildren use it.
...nd is a Cake. Post
... 6d. P.O. for Trial Box
...ve my claims.

BURLEIGH,
...reet, LONDON, W.C.1.

LTON"

REDUCTION IN PRICES.

CARRIAGE guaranteed

with

pron £7:5:0

odels from £3:19:0

roval Carriage Paid.

atalogue "M" free.

ANUFACTURER,

LONDON, E.S.

Works: Glebe Road.

believe that it was designed by the Duke of Atholl, the new Lord Chamberlain.

The "Geddes Axe" in Clubland.

It looks as though the "Geddes Axe" is not to be confined to Government Departments. The habitués of many West End clubs, I hear, are growing weary under the burden of increased subscriptions, and there is a general tendency towards economy and reform.

At Leighton House.

I looked in at the second soiree of the Salon, which Mrs. Donald Fergusson organised at Leighton House, Kensington, and found it a very amusing affair. Amongst the distinguished audience enjoying a programme which included Rathmell Wilson's translation of De Musset's "Proverbe on une Act," and Mr. Ivor Thomas' rendering of "Che gelida manina," from "La Boheme," were Lord and Lady Swaythling, Lady Glenconner, Lady Wild, Sir John Butcher and Mrs. Claud Beddington.

Mr. Hutchinson's New Book.

I hear that Mr. A. S. M. Hutchinson, author of the popular "Comes," of which Sir James is the best new novel I have read this year," has written another story of married life, a "Freedom." Hodder and Stoughton will publish it in the autumn.

Twenty Club.

Sir Edward Marshall Hall was at a dinner given by the Twenty Club at the Hotel Metropole. In an announcement he suggested that the film be constructed of crime, and that the



Sir E. Marshall Hall.

announcement from Colonel Marshall Hall to the children and the cinema merely stated that the L.C.C. was for the welfare of 900,000 Londoners a big job!

...that the Royal Academy ought to elect one or two women members. Mr. Winston Churchill, who is by way of being a good critic, thinks twelve women artists equal to twelve men. I dare say he would include Mrs. Knight and Mrs. Clare She

On the Halls.

The latest recruit to the list of entertainers is Mr. F. C. Sterndale-Bennett, who is known hitherto as a con

Costly but Beautiful.

There seems to be a new craze for Venetian glass. Dining at a restaurant a few nights ago, I was greatly struck by the beautiful Venetian glass table appointments, which included a mass of glass effect, and shows up the perfection. On this particular table a mass of glass tulips were used.

...Surrey...



THE 'WINNING CREW' of one of the frail-looking craft which competed in the aquatic sports arranged for the entertainment of the Prince of Wales in Mandalay.

2.2.22 E.M.

ing to Bill's question.

"To-morrow morning will be time enough," he said. "I'll have that girl Steadman, at my office at eleven o'clock. Perhaps you'll come with Mr. Clayton, Sir Winthrop?"

"Surely, surely," the great man agreed. "I'll answer for him. I don't think the boy is likely to run away meanwhile."

Bill got up, went to the sideboard and poured himself a glass of soda-water. He felt just a little faint. It wouldn't really have surprised him had he been taken away in handcuffs.

As for Sam, he rubbed his hands together under the table, filled with a sense of ghoulish satisfaction. If Roger Fairchild was guilty of murder the law of the land would hang him.

It was almost a cheerful party that sat down to lunch that Sunday.

The quiet optimism of Sir Winthrop Parsons had a good effect upon them all. The fact that Bill had not been carried off and clapped into a police-court cell was a fair sign that he did not, in the opinion of Scotland Yard, deserve such a fate.

Nora, however, was not altogether happy. Sir Winthrop, unconscious of her personal share in the story, explained fully to her the probability of this man Fairchild's being the assassin.

The parlourmaid's description fitted him where it had not fitted Bill. There was a tale, there, of conscience working through remorse and—as so often happened in these cases—of fastening upon someone else to share the blame. Sir Winthrop had made a serious study of psychonology, particu-

Thorpe and
am's simple
ality.

down at the
all gathered.
form in his
just at this

shop," Sam's
I determined
ng. He was
d I said I'd

il's Great Adventure.



PUBLICATIONS

OF THE

American Baptist Mission Press

RANGOON.

- Burmese and English Dictionary**, By Rev. A. Judson. D. D., med. 8vo. Rs. 10.
- English and Burmese Dictionary**, By Rev. A. Judson. D. D., royal 8vo. Rs. 10.
- Practical Method with the Burmese Language**, with anglicized pronunciation of the words, by W. H. Sloan, royal 8vo., pp. 230. Flexible covers, Rs. 5.
- General Outlines of Geography**, in Burmese revised by Rev. Jas. R. Haswell, med 8vo. Rs. 2.
- Elementary Geography**, Burmese and English, by A. W. Lonsdale, F. Cap 8vo. As. 4.
- Laws of Menoo**, Burmese and English, Translated by Dr. Richardson, royal 8vo. paper cover Rs. 5. half bound Rs. 6. full sheep Rs. 7.
- Land Measuring**, in Burmese, by Rev. L. Stilson, royal 8vo. annas 4.
- Pictorial Reader**, in Burmese, med. 12mo. pp. 84, annas 4.
- Stilson's Arithmetic**, in Burmese, revised by Rev. Jas. R. Haswell, Rs. 1-8.
- Stilson's Arithmetic**, Part I., annas 10.
- The House I Live In**, or, The Human Body. A translation into Burmese of Dr. Alcott's Work, by Mrs. C. Bennett, F. Cap 8vo., annas 6.
- Thembongyee, or Burmese Spelling Book**, royal 8vo. 40 pages, annas 4.
- Thembongyee Abridged**, as. 1., per 100, Rs. 5.
- Eastern Primer No. 1**, (in English), 16mo. pp. 80, annas 4.

J. H. Mercer on Burton, M. R. C. S.
 5/B Field Hospital
 ONE ANNA
 Burma - Bohamo
 26/3/86
 Map of

BURMA

American Baptist Mission Press

No. 1, 35th Street, Rangoon.

The total area of Burma is 285,664 square miles
 with Burma is 192,000
 British Burma is 93,664
 British Burma is about 4,000 sq. m. larger than Great Britain.

PUBLICATIONS

OF THE

American Baptist Mission Press

R A N G O O N .

Burmese and English Dictionary, By Rev. A. Judson,
D. D., med, 8vo. Rs. 10.

English and Burmese Dictionary, By Rev. A. Judson,
D. D., royal 8vo. Rs. 10.

Practical Method with the Burmese Language, with
anglicized pronunciation of the words, by W. H. Sloan,
royal 8vo., pp. 230. Flexible covers, Rs. 5.

General Outlines of Geography, in Burmese revised by
Rev. Jas. R. Haswell, med 8vo. Rs. 2.

Elementary Geography, Burmese and English, by A. W.
Lonsdale, F. Cap 8vo. As. 4.

Laws of Menoo, Burmese and English, Translated by Dr.
Richardson, royal 8vo. paper cover Rs. 5. half bound
Rs. 6, full sheep Rs. 7.

Land Measuring, in Burmese, by Rev. L. Stilson, royal 8vo.
annas 4.

Pictorial Reader, in Burmese, med. 12mo. pp. 84, annas 4.

Stilson's Arithmetic, in Burmese, revised by Rev. Jas. R.
Haswell, Rs. 1-8.

Stilson's Arithmetic, Part I., annas 10.

The House I Live In, or, The Human Body. A translation
into Burmese of Dr. Alcott's Work, by Mrs. C. Bennett,
F. Cap 8vo., annas 6.

Thembongyee, or Burmese Spelling Book, royal 8vo.
40 pages, annas 4.

Thembongyee Abridged, as. 1., per 100, Rs. 5

Eastern Primer No. 1, (in English), 16mo. pp. 80, annas 4.

56

1/2



King Theebaw & Queen Soo-payah-lat.

The King born 1858 proclaimed King Oct: 1878. Married the
Soo-pyah-lat in 1878 & her Sister Soo-pyah-glay in 1883.



King Theebaw & Queen Soo-payah-lat.



Theebaw Min, & his two wives, Soo.pyah.lat & her sister

Soo.pyah.glay. The King wears the Order of the Tsalwé, consisting

of 24 chains of twisted gold, united by bosses. (From a negative found in the Palace.)



Minister in Court dress.



Officer in Court dress.



Officer in Court dress.



Royal Apartment in the Palace, Mandalay.
King Theebaw & his two Queens,
(Soo Pyah Lat & Soo Pyah Glay.)

1884.



Crucified Malefactor , near Pagan..



Minhla Fort. 1885.



Nyoungoo.



West front of British Camp, Nyongoo.



Interior of British Camp, Nyungoo.



Village of Nyungoo.



Pagoda at Pagan.



Pagoda at Pagan.



Wood carved corner of Kyoung, at Pagan.



Pagoda near Pagan.



British Camp - Myingyan.



The King's State Barge.
on the
Irrawaddy River,
Mandalay.



Queen's Kyoung in A Road, outside City Walls, Mandalay.



English Church in C Road, Mandalay.
outside the City walls.



*Kyoung (Italian style) C Road, Mandalay.
outside the City walls.*



Mo-dee Kyoung, outside City walls,
Mandalay.



East face of the City Wall & Moat ,
Mandalay Hill in the distance .



Eastside, City Mount & Wall, Mandalay.



King Theebaw's State Barge on the Moat, Mandalay. 1885. (the prow in the form of an Eagle.)



North side City Moat & Wall.
Mandalay.



The South Gate & Bridge, Mandalay.



The Golden Kyoung, outer Courtyard,
Palace, Mandalay.



Some of King Thebaw's Guards at the East Gate of the Palace enclosure on
28th Nov. 1885, the day Genl. Prendergast's Force entered Mandalay.



The Royal Mausoleum, of Mindohn Min
Thebaw's father, the Founder of the City of
Mandalay in 1858.
(East Courtyard of the Palace.)



East Gate of the inner enclosure of the Palace,

Mandalay.



*East or Grand Front of the Palace ,
Mandalay.*



The Palace, with Mandalay Hill in the background.



The King's Bath in the S. gardens,
Palace, Mandalay.



Nov: 29, 1885.

v.c.

General Prendergast's interview with the Burmese Royal

Family in the S. Gardens of the Palace Mandalay.

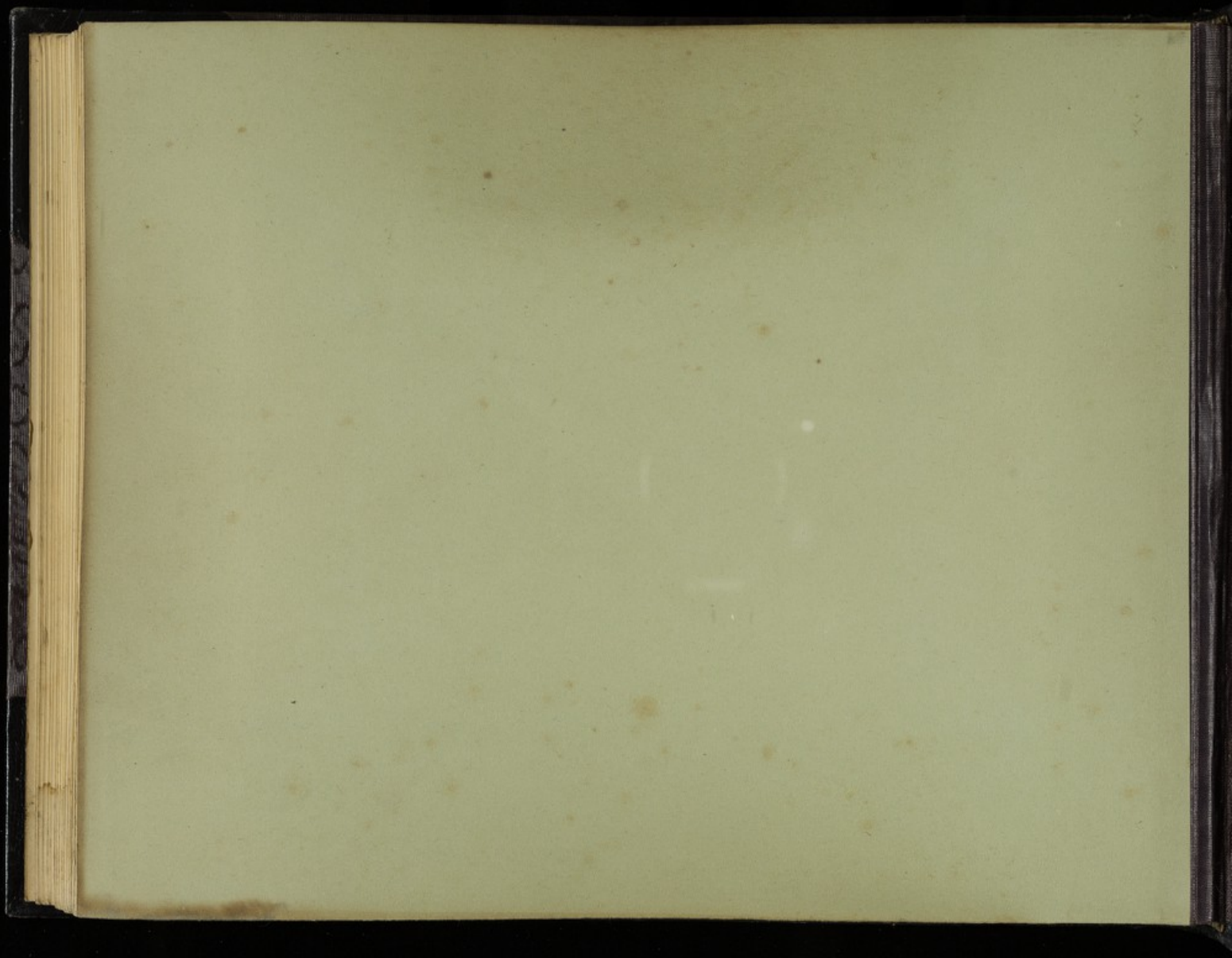
Colonel E.B. Sladen, M.S.C. acting as Interpreter.



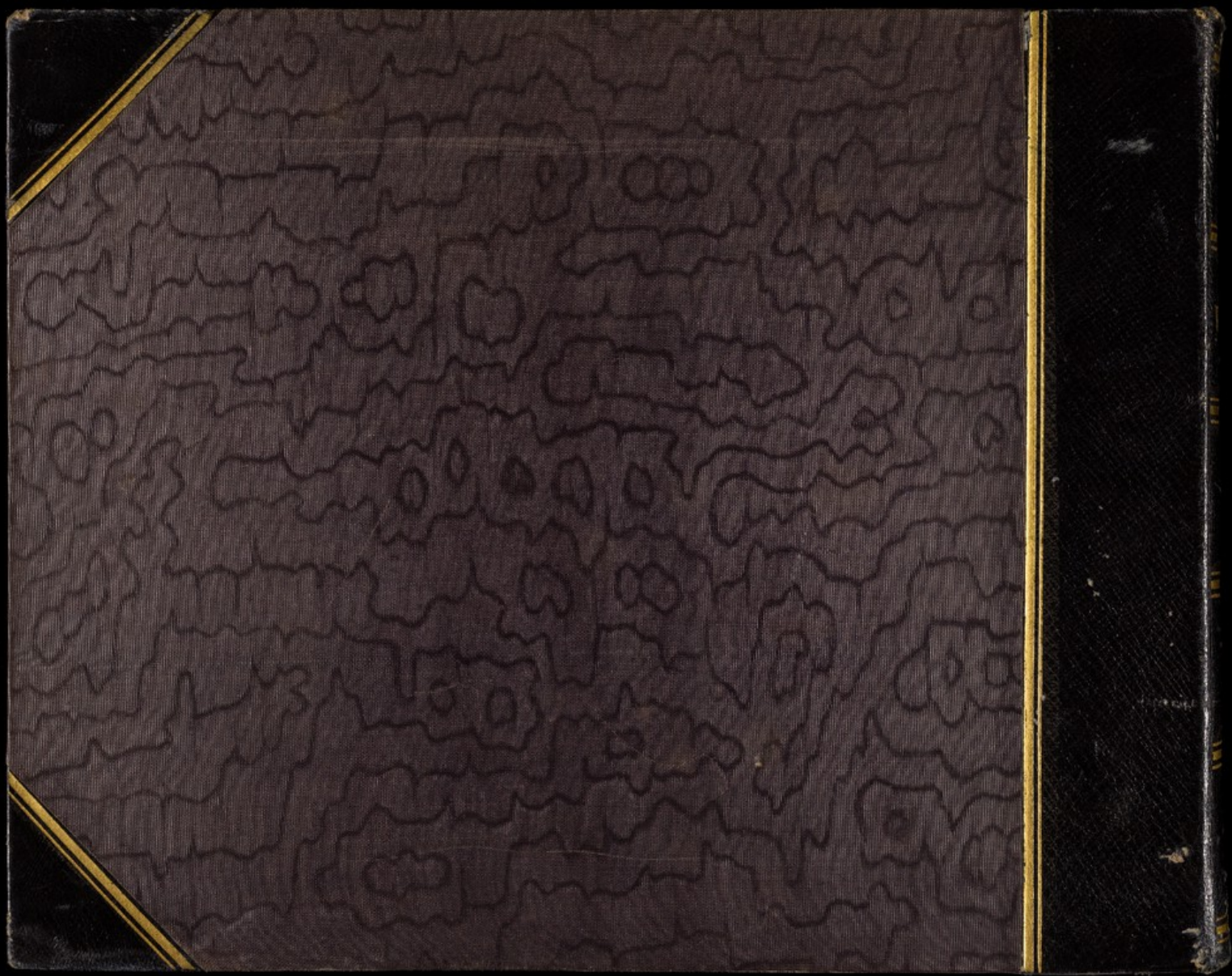
One of King Theebaw's State carriages.



I. F. Coy's S.S. "Thooreah" (3 decker)
with the Royal Family & Court prisoners on board.



J.B.B. & Co. No. 53



522.

THE BURMA CAMPAIGN.
1885-6-7.



F. H. M. BURTON, M. S. DURH., M. R. C. S.
SURGEON, ARMY MEDICAL STAFF.

၄၃၇

ပရိဆတ်။ ဟင်းချို။ မော်ရဲဆံ။ ဒိုရိတ်။

ဒိုလ်ခြေဆေးထွားစုနှင့်ဆိုင်ယောဆေးထွားကြီး။

ပန်းမော်မြို့။

၁၈၈၆။

M. & Co

RAmc 522/12

243



The Front of King Theebaw's Palace. 28th Nov. 1885.



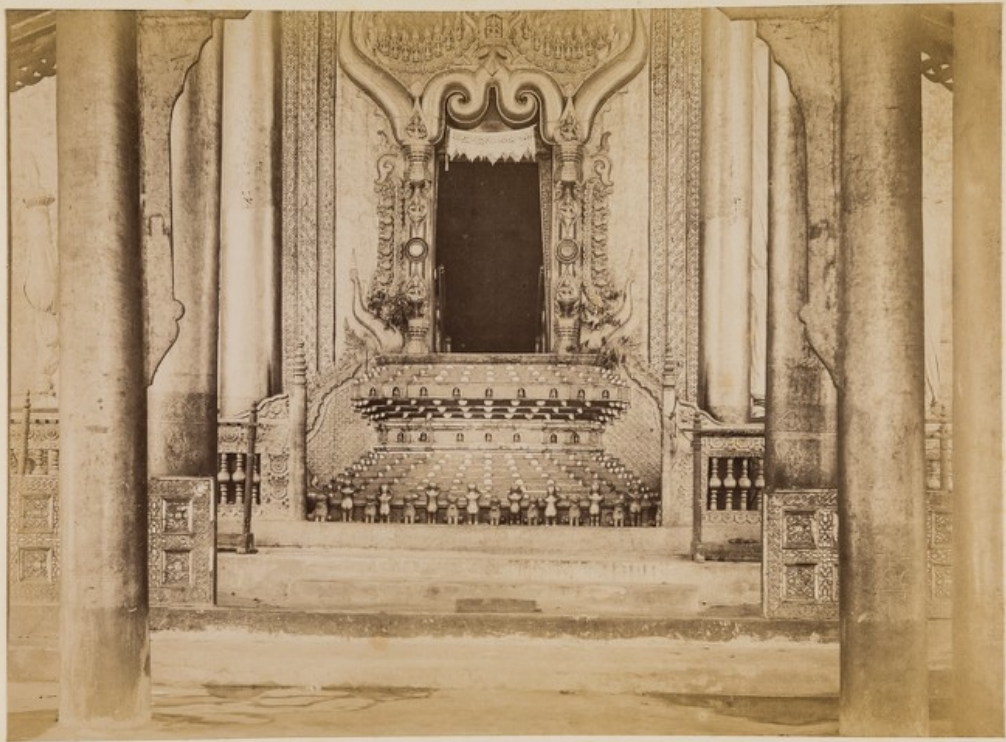
East Front of the Palace, Mandalay.



The Front of King Theebaw's Palace, 28 Nov. 1885.



*E. Front of the Palace, Mandalay.
Hall of Audience.*



King Theebaw's principal Throne, (the Lion Throne,)
placed at the back of the Hall of Audience.



North Side of Palace, Mandalay.



Interior of the Palace, Mandalay.
Shewing the Hmaw-gaw or Crystal Palace on the R.



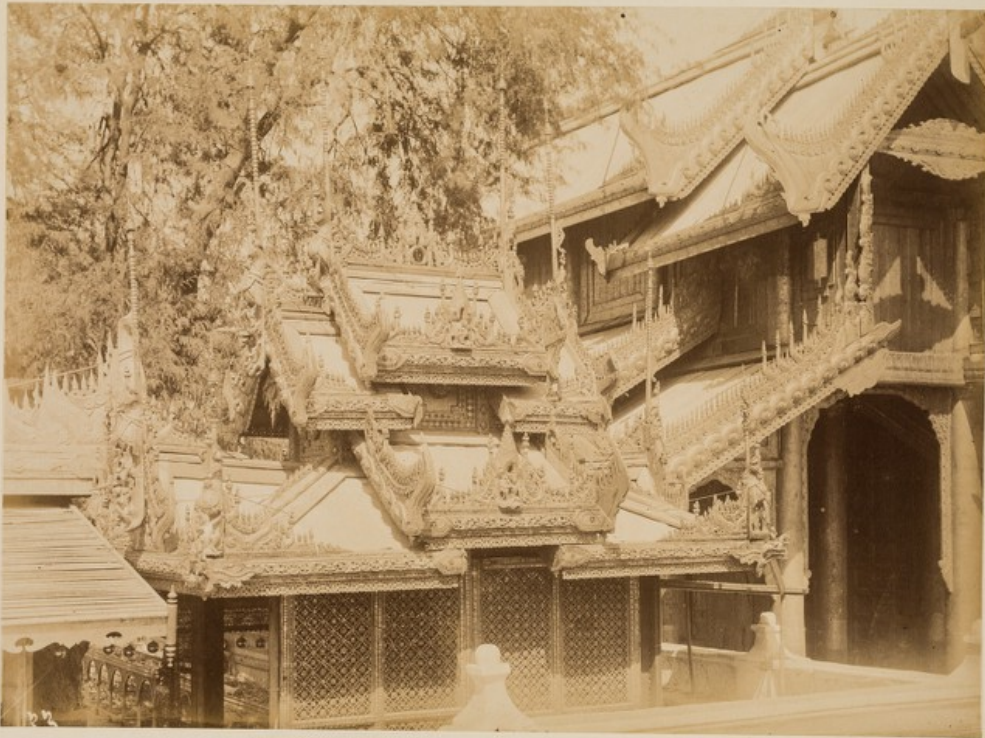
Bird's eye view of the Palace & City of Mandalay.



Evening Silling Room of the King & Queen .
Interior of the Palace - South Side.



Side Entrance to the Palace.



Interior of the Palace - Royal Apartments.



Interior of the Palace, Mandalay.



Fine wood carving, gilded, Interior,
Palace, Mandalay.



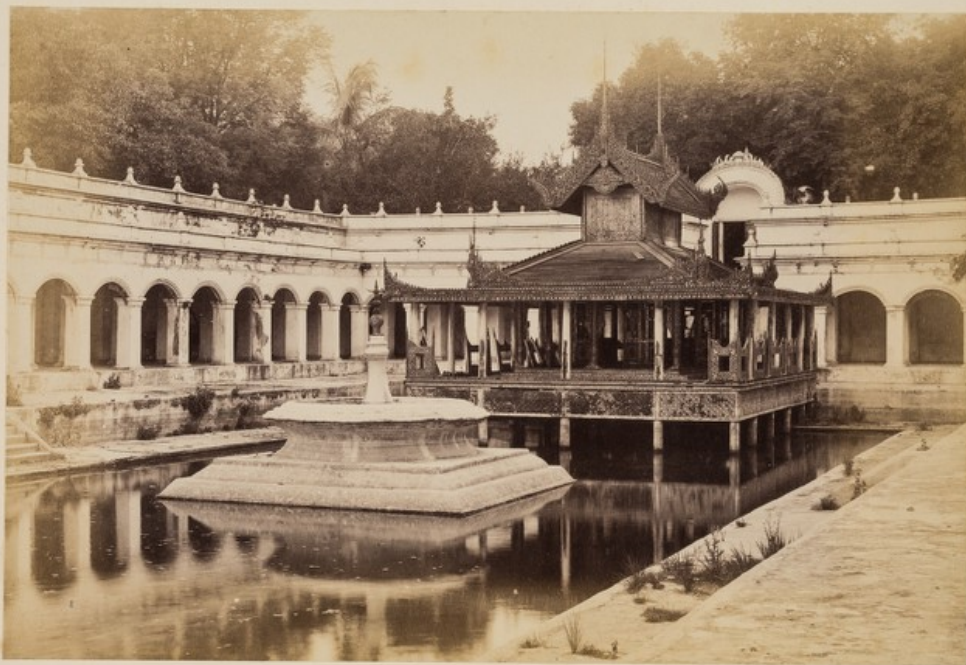
Interior of the Palace, Mandalay.



Interior of the Palace, Mandalay.



Ornamental Canal in the South Garden of the Palace,
Mandalay.



The King's Swimming Bath,
Palace, Mandalay.



Grottoes & Summer houses in the Palace Gardens.
Mandalay.



*Grottoes & Summer Houses in the Palace Gardens .
Mandalay .*



Cannon in the Palace .
Mandalay.



Earthwork inside the City Walls.

*The View is taken from the East Gate Mandalay Hill is
seen in the distance .*



Kyungs , at foot of Mandalay Hill.
occupied by
N^o 4. Field Hospital Dec: 1885.



Pagoda , Mandalay.



Incomparable Pagoda, Mandalay.

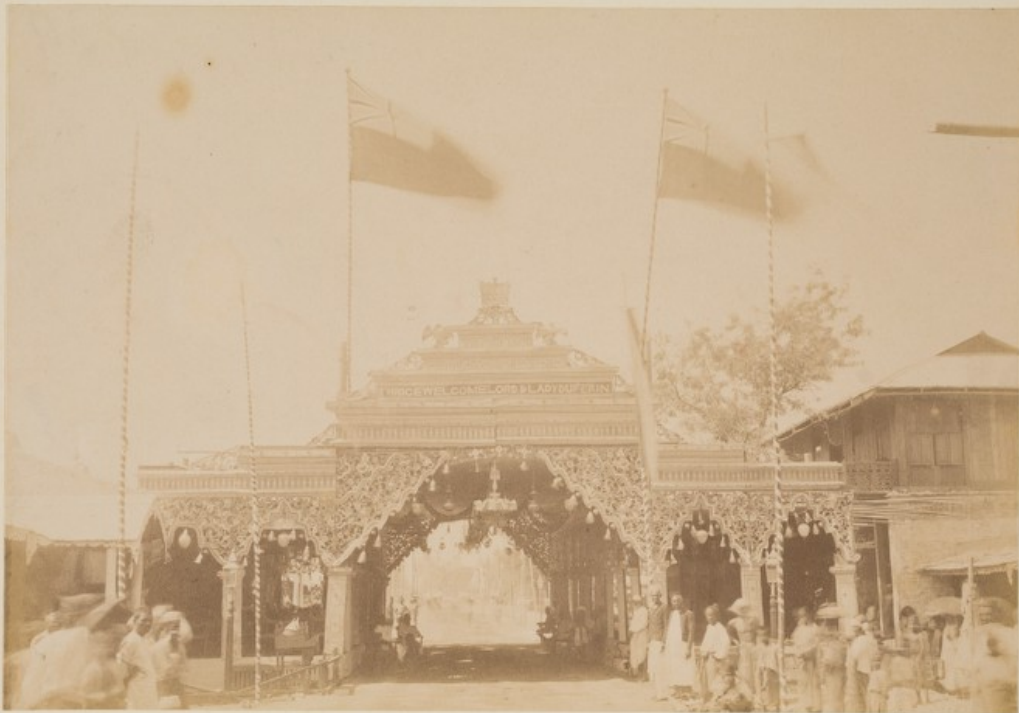


A carved door, Incomparable Pagoda.

Mandalay.



Captured Elephants.
Mandalay -



Decorations in honor of Lord Dufferin's arrival.
at
Mandalay. Feb: 12th. 1886.



Decorations in honor of Earl Dufferin.

Mandalay.
Feb. 12. 1886.



*Nga Tsenoo, L. Bank of the Irrawaddy.
above Mandalay.*



Inner view of Burmese Stockade.
Hti-gyaing R. bank Irrawaddy.



Outer view of Burmese Stockade.

Hti-gyaing, R. bank of Irrawaddy.



22

Tagoung.
L. bank of Irrawaddy.



Myadounng.

L. bank of Irrawaddy.



Katha.
R. bank of the Irrawaddy.

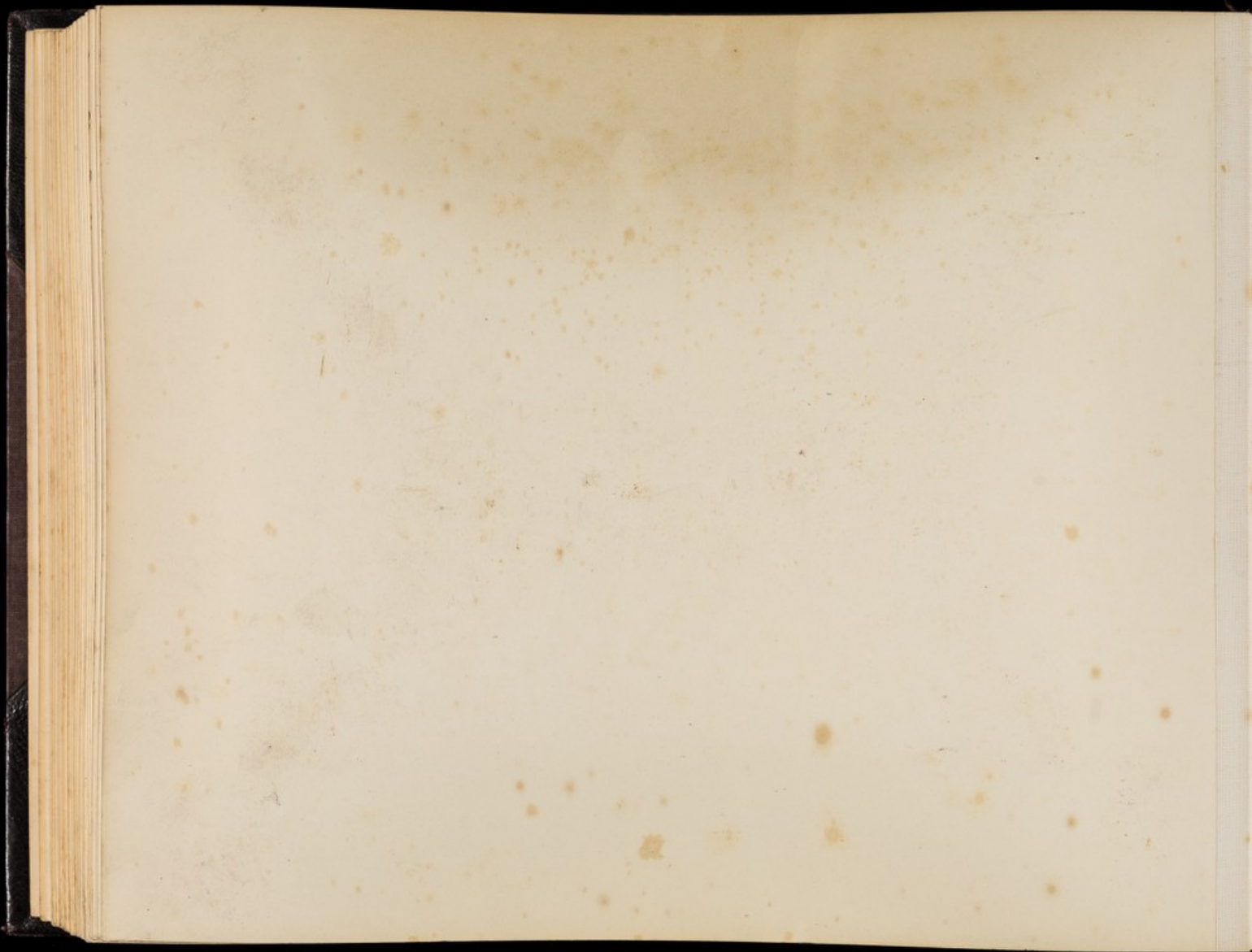


Modah.

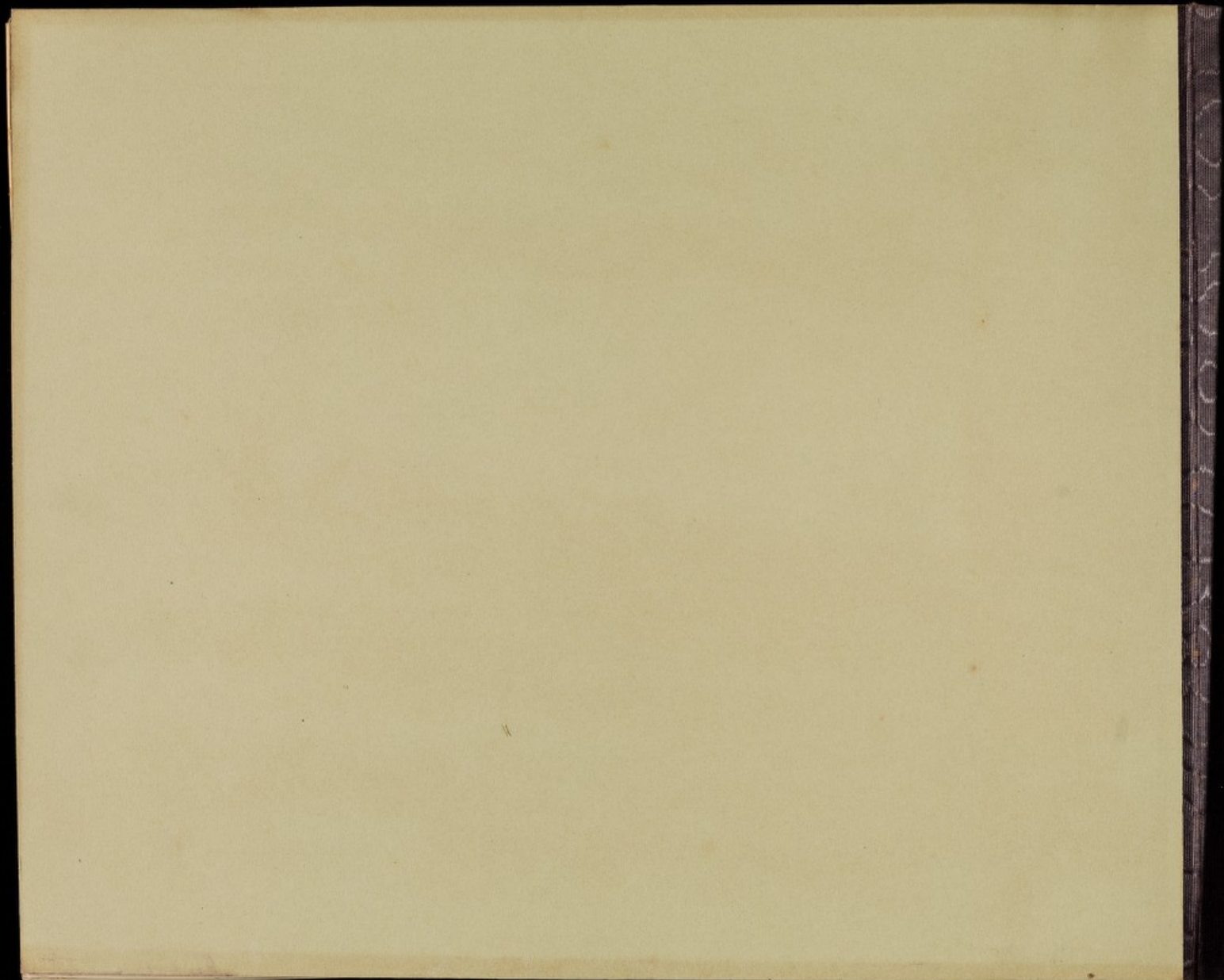
R. bank of Irrawaddy.

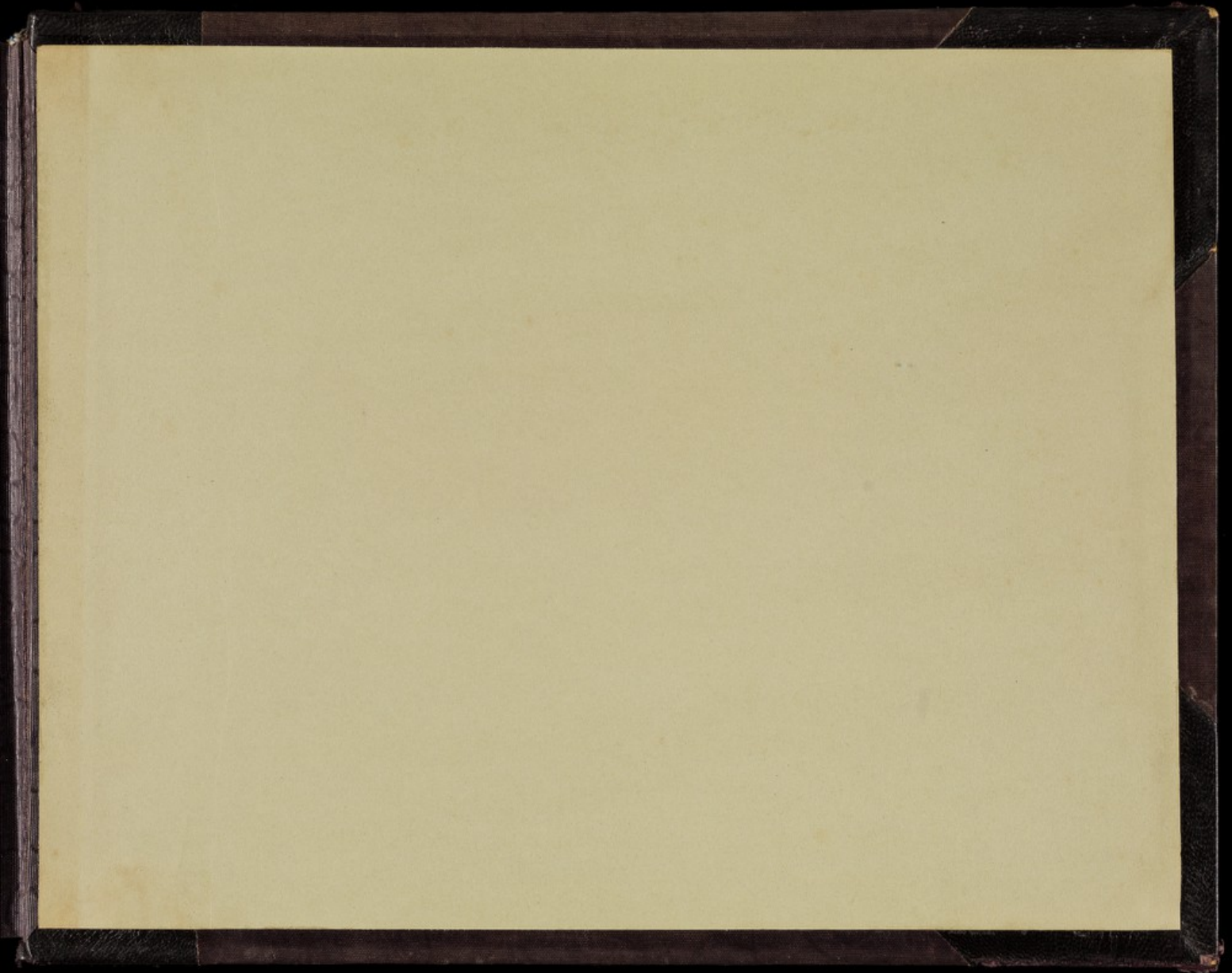


Shway_goo-gyee.
L. bank of Irrawaddy.











522

THE BURMA CAMPAIGN.
1885-6-7.



F. H. M. BURTON, M. S. DURH., M. R. C. S.
SURGEON, ARMY MEDICAL STAFF.

522

ဖရဲဆစ်။ ဟင်းရီး။ မော်ရစ်။ ဗိုလ်တံ။

ဒိုလ်ခြေဆေးဆွားရုန့်ဆိုင်သောဆေးဆွားကြီး။

ဗန်းမော်မြို့။

၁၀၀၆။ ၇။

M. & Co

RMC 522 | 3

343



Entrance to the 2nd rocky Defile of the
Irrawaddy. Sunday, Dec. 27. 1885.



In the 2nd Defile, Irrawaddy.
Sunday, Dec. 27. 1885.



Bhamo .
Kachin Hills in the distance.



South Gate of Bhamo.

Dec : 31st 1885.



Inside the Bhamo town Stockade.

Dec : 1885.



27

Bhamo Bazaar.



Bhamo Bazaar.



Chinese Temple, Bhamo.



Camp of N^o 4. Co^y B. S. & Miners
outside
East Stockade, Bhamo.



Camp of R.A. & 1st Bⁿ. R.W. Fusiliers.
outside
East Gate of Bhamo.
Jan^y 1886.



Large Image of Shin Gautama.
outside
East Gate of Bhamo.



Outside East Gate of our Stockade,
Bhamo, 1886.



Pagodas, Zayats, inside Bhamo Stockade.



Bhamo , inside the Stockade .



Group of Natives in the Bazaar

Bhamo.
1886.



Bhamo Bazaar. 1886.

Mogaung Expedition from Bhamo Feb. & March 1886.



Transport Elephants ^{at} crossing the Mogaung River.
Naungkan Village, Feb. 28th 1886.



Our Camp on the sands opposite Naungkan.
Feb. 28th 1886.



Our Camp, Mogauing. March 1886.



Officers of the Mogaung Expedition.

March 6th 1886.

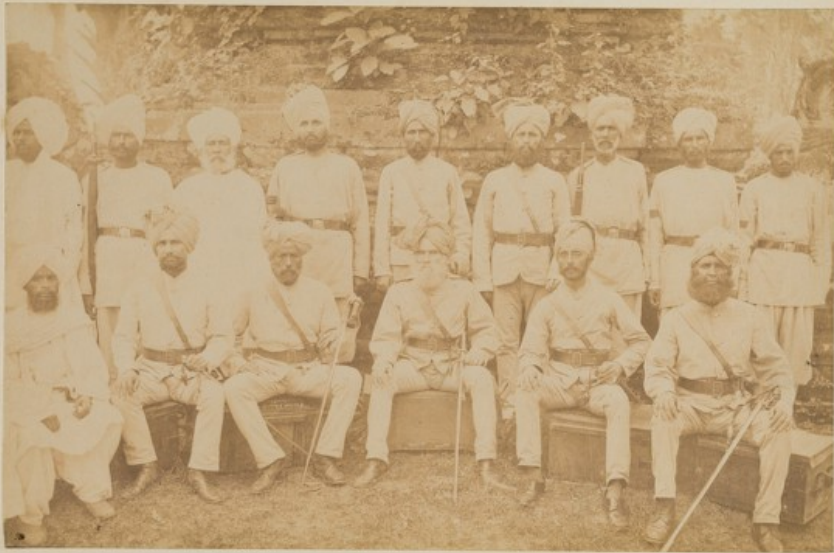


Mogaung Stockade & River with Coolie
Camp on the Sands.
March 1886.



F.H.M.B.
↑

Brig^d Gen^l R. Griffith, M.S.C. & Staff. Bhamo. 1886. (Oct.)



Native Officers 26th P.I. Bhamo. Oct:7th 1886.



F.A.M.B.
↑

Hospital Staff, Bhamo . Oct: 7th 1886.



F.H.M.B.
↑

Hospital Staff. Bhamo. Oct 7th 1886.



The East Gate of Bhamo. 1886.
Inside the Stockade.



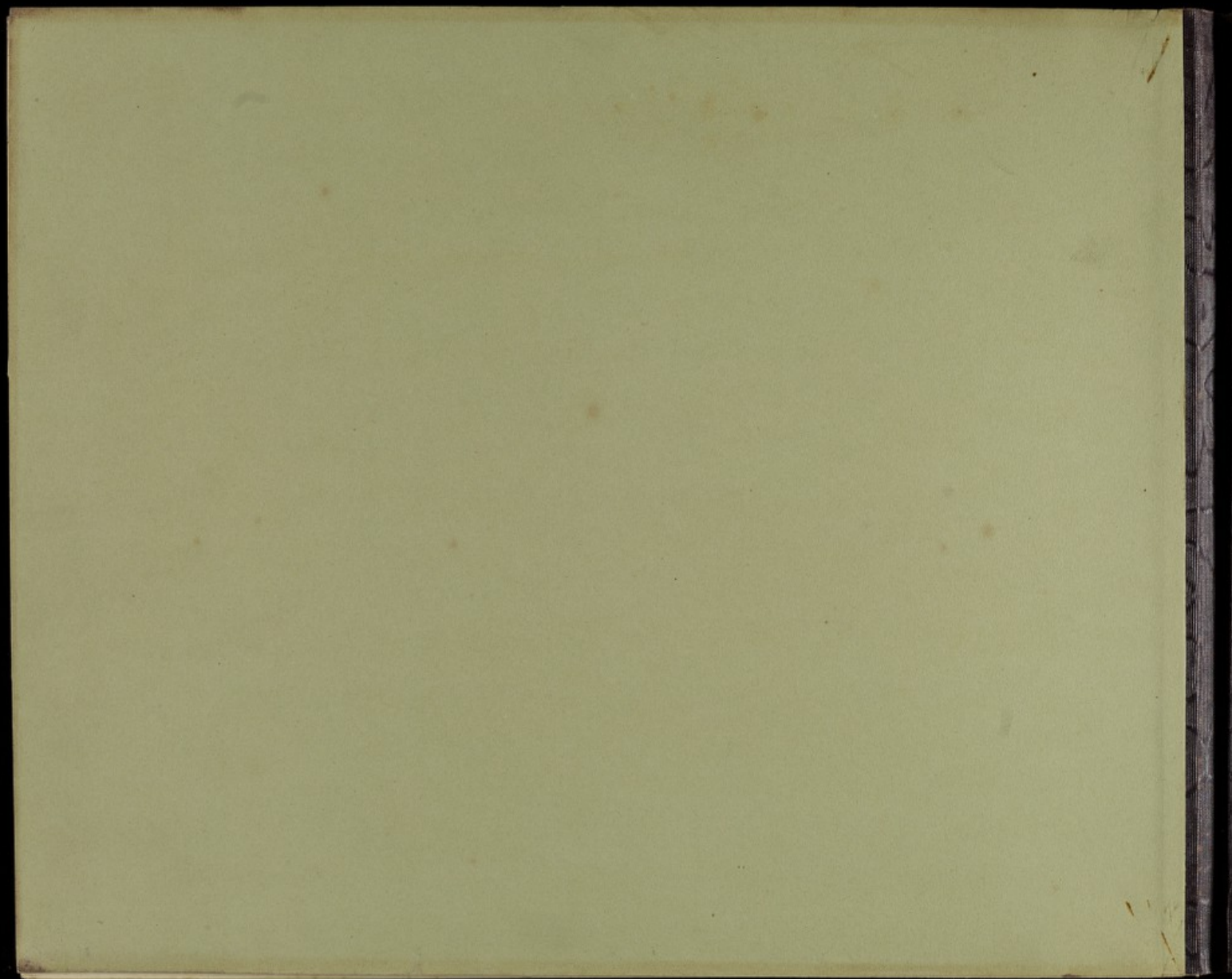
Sentrybox on East Stockade
from inside
Bhamo. Dec: 1886.

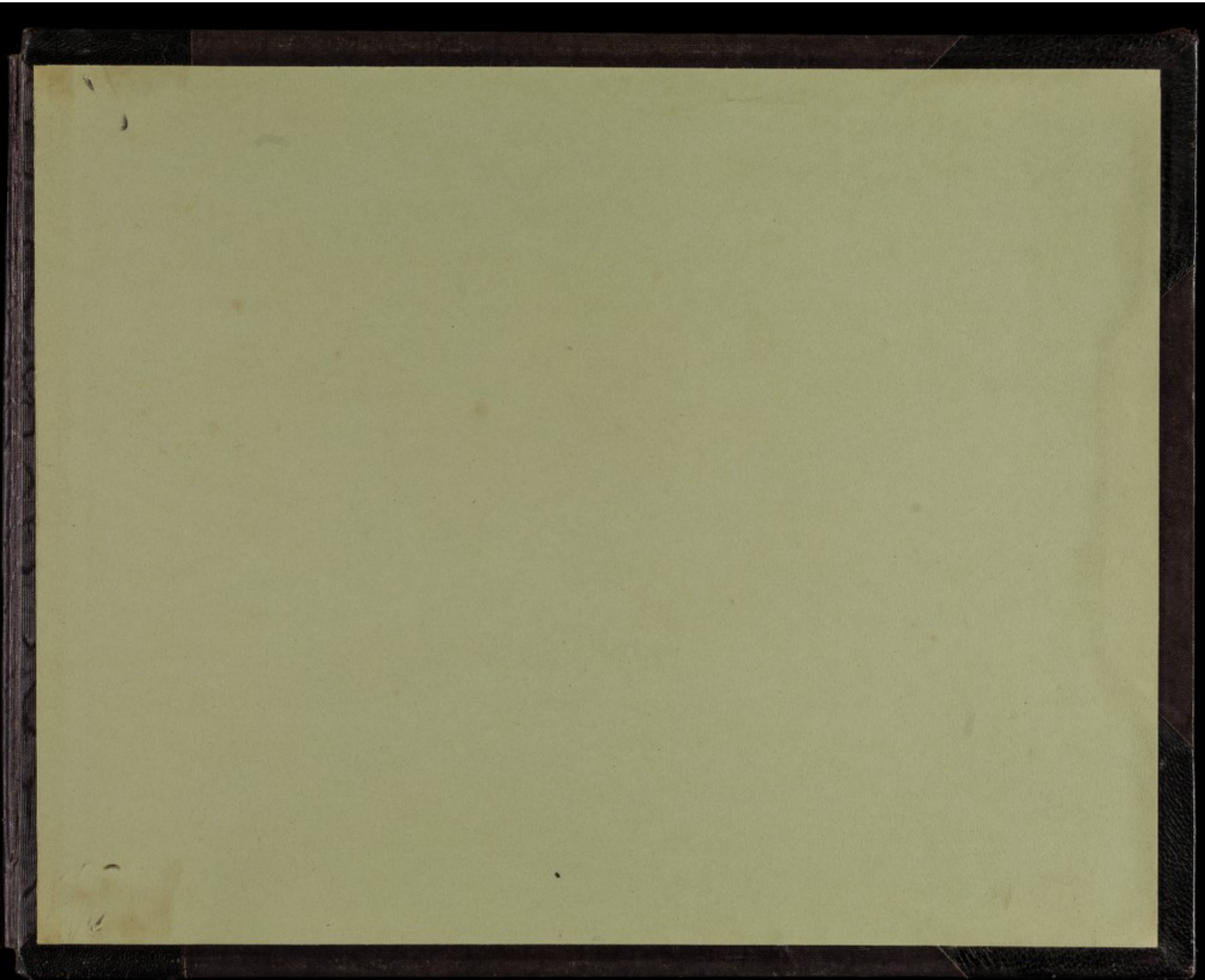


Sentry box on East Stockade
from outside
Bhamo. Dec: 1886.



R.A. & R.E. Quarters & Mess.
inside the
East Stockade. Bhamo.
1886.







The subjoined Proclamation which was issued on the 1st January at Calcutta and Rangoon, is published for general information.

MANDALAY :
The 4th January 1886. }

C. BERNARD,
Chief Commissioner.

PROCLAMATION.

By command of the Queen-Empress, it is hereby notified that the territories formerly governed by King Theebaw, will no longer be under his rule, but have become part of Her Majesty's dominions, and will during Her Majesty's pleasure, be administered by such Officers as the Viceroy and Governor-General may from time to time appoint.

The 1st January 1886.

DUFFERIN,
Viceroy and Governor-General.

ကြော်ငြာစာ။

အောက်၌ရေးသားပါရှိသည့်အမိန့်ကြော်ငြာစာကို၊ ဇန္နဝါရီလ ၁ရက်နေ့၊ ကာလကတ္တာ(ဘင်္ဂလား) မြို့နှင့်ရန်ကုန်မြို့တွင် ထုတ်ဆင့်တော်မူပြီး ဖြစ်၍ အများကြားသိစေရန် ကြော်ငြာလိုက်သည်။

မန္တလေးမြို့။

၁၈၈၆ခု၊ ဇန္နဝါရီလ ၄ရက်နေ့ထုတ်။
သက္ကရာဇ် ၁၂၄၇ခု၊ နတ်တော်လပြည့်ကျော် ၁၄
ရက်နေ့ထုတ်။

ထိပါနတ်၊
အရေးတော်ပိုင်မဟာဝန်
ရှင်တော်မင်းကြီးလက်မှတ်။

အမိန့်ကြော်ငြာစာ။

ထုန်းတော်အတ္တန်တရားကြီးမြတ်တော်မူထွသော ဧကရိယုရင်မ မင်းမြတ်တရား၏ အမိန့်အာဏာတော်အရကြော်ငြာလိုက်သည်မှာ။ အထက်သိပေါမင်းအုပ်စိုးတော်မူသော မြန်မာနိုင်ငံတော်ကို။ ၎င်းဘုရင်ကထပ်မံဆက်လက်၍စိုးစံအုပ်ချုပ်ရဦးမည်မဟုတ်။ ၎င်းနိုင်ငံနယ်မြေများသည်။ အထွင်ဘုရင်မမင်းမြတ်တရား၏နိုင်ငံနယ်မြေဖြစ်လေပြီး။ အထွင်ဘုရင်မမင်းမြတ်တရား အလိုတော်မြတ်ရှိစဉ်ကာလအတွင်း။ ထိုနိုင်ငံကို ဣန္ဒြိယဘုရင်ခံမင်းမြတ်ကအခွင့်သင့်လျော်သည့်အခါ။ မှူးမတ်အရာရှိခန့်ထား၍။ ၎င်းမှူးမတ်အရာရှိတို့က သာအုပ်ချုပ်စီရင်လိမ့်မည်။

မန္တလေးမြို့။

၁၈၈၆ခု၊ ဇန္နဝါရီလ ၁ရက်နေ့ထုတ်။
သက္ကရာဇ် ၁၂၄၇ခု၊ နတ်တော်လပြည့်ကျော် ၁၁ရက်နေ့ထုတ်။

ဒါတ်ဖရင်၊
ဣန္ဒြိယဘုရင်ခံမင်းမြတ်
လက်မှတ်။

Photographed by
Lieut. G. H. A. Catchman
Nov 1888 and Dec. 1888

Nov.
Inside the East Gate of Phano
showing the great redoubt stormed
by the Chinamen 15th November 1886
The Standard of the Myingzain
Prince was taken outside the
redoubt -

One gunner (British) R.A. cut to
pieces in the R.L. Guard room, &
two 26th P. at spots I have
marked, these men I picked
up after the fight & carried
to hospital -

Capt - Lachon
R.F.
well known
to me, a
fine powerful
man

One Corp - R.F. son of a
Baptist Minister of Hachon,
killed to pieces in the Chinese
Bazaar, & thrown into the Parawaddy.
Body recovered 3 days afterwards

Only two Chinamen killed in the fight &
one wounded, afterwards found in jungle -

