

'Lett's Indian and Colonial Rough Diary'

Publication/Creation

1916

Persistent URL

<https://wellcomecollection.org/works/a42m5sw8>

License and attribution

You have permission to make copies of this work under a Creative Commons, Attribution, Non-commercial license.

Non-commercial use includes private study, academic research, teaching, and other activities that are not primarily intended for, or directed towards, commercial advantage or private monetary compensation. See the Legal Code for further information.

Image source should be attributed as specified in the full catalogue record. If no source is given the image should be attributed to Wellcome Collection.



Wellcome Collection
183 Euston Road
London NW1 2BE UK
T +44 (0)20 7611 8722
E library@wellcomecollection.org
<https://wellcomecollection.org>



47-

16

TELEGRAMS TO AND FROM AUSTRALASIA, CHINA, JAPAN, DUTCH INDIES, INDIA, AFRICA, SPAIN, PORTUGAL, THE MEDITERRANEAN, AND SOUTH AMERICA WITH

London Stations:—

4, Electra House, Finsbury Pavement, E.C.
 11, Old Broad Street, E.C.
 8, Leadenhall Street, E.C.
 Market Buildings—29, Mincing Lane, E.C.
 23, Mark Lane, E.C.
 57, Holborn Viaduct, E.C.
 The Baltic Exchange, Bury Street Entrance, E.C.
 41 & 42, Parliament Street, S.W.
 Foreign Auction Mart, Covent Garden, W.C.
 449, West Strand, W.C. (Charing Cross).
 6, Denman Street, Borough, S.E.

Via Eastern

GREAT BRITAIN AND EUROPE.

UNITED KINGDOM.

Provincial Stations:—

BIRMINGHAM.—123, Colmore Row.
 BRADFORD.—4, Commercial St.
 BRISTOL.—2, Small Street.
 CARDIFF.—33, Merchants' Exchange, Bute Docks.
 DUNDEE.—50, Bell Street.
 EDINBURGH.—38, Frederick Street.
 GLASGOW.—5, Royal Bank Place.
 HULL.—Exchange Buildings, Lowgate.
 LEITH.—24, Constitution Street.
 LIVERPOOL.—K13, Exchange Buildings, The Cotton Exchange.
 MANCHESTER.—48, Spring Gardens.
 NEWCASTLE.—K, Exchange Buildings, Quayside.
 PORTHURNOW.—Cornwall.

THE EASTERN TELEGRAPH CO., LTD.

And from all Postal Telegraph Offices.

BRITISH GENERAL

INSURANCE COMPANY, LIMITED.

Head Office: 66, Cheapside, London, E.C.

DEPARTMENTS:

FIRE. ANNUITY. LIFE.
BURGLARY. SICKNESS. ACCIDENT.
DRIVERS'. MOTOR CAR. HORSES.
THIRD PARTY. LIFTS. PLATE GLASS.
EMPLOYERS' LIABILITY.
FIDELITY GUARANTEE. LOSS OF PROFIT.
PROPERTY OWNERS' INDEMNITY.

Managing Director: NORMAN M. WALKER.



THE LONDON ASSURANCE

Incorporated by Royal Charter, A.D. 1720.

For FIRE, LIFE, MARINE, ACCIDENT, CAPITAL and LEASEHOLD REDEMPTION, BURGLARY and PLATE GLASS Assurances.

Head Office: No. 7, Royal Exchange, London.
 West End Office: 22, PALL MALL, S.W.

The Corporation has granted Fire, Life and Marine Assurances for nearly Two Hundred Years, and now also undertakes Capital and Leasehold Redemption, Burglary, Plate Glass and Accident Business, including Liability to Employers in respect of Domestic Servants, Shop and Warehouse Assistants, under the Workmen's Compensation Act of 1906.

INCOME, 1914 - - - £1,594,000 16 2
 FUNDS, 31st December, 1914 - £5,495,401 1 6

Prospectuses and copies of the Accounts can be had on application.

BRITANNIC ASSURANCE CO., Ld.

Ordinary Branch—WHOLE LIFE ASSURANCES, with and without profits; ENDOWMENT ASSURANCES, with and without profits; HOUSE PURCHASE, in combination with Life Assurance.

Industrial Branch—ADULT ASSURANCES, Whole Life and Endowment; CHILDREN'S ASSURANCES, Whole Life and Endowment.

Over £10,450,000 paid in Claims.
 Funds Exceed £3,840,000.

Chief Offices—

Broad Street Corner, BIRMINGHAM.

THE PIONEER OF LIABILITY INSURANCE. Established 1880.

THE EMPLOYERS'

LIABILITY ASSURANCE CORPORATION, LTD.

Capital Subscribed, £1,000,000.

Reserves exceed £2,250,000.

Claims paid exceed £10,000,000.

Insurance of all kinds except Life and Marine.

Head Offices:—Hamilton House, Victoria Embankment, London, E.C.

Agencies in the principal Commercial centres throughout the World.

WALHMM/CM/Pail/A. 9/11

Royal Insurance Buildings,
1, North John Street,
LIVERPOOL.

Royal Insurance Buildings,
24-28, Lombard Street,
LONDON.

Total Funds
£20,409,644.



Annual Income
£7,742,731.

INCORPORATED IN GREAT BRITAIN.

FIRE. ABSOLUTE SECURITY. **MARINE.** MODERATE RATES OF PREMIUM. **LIFE.** LIBERAL POLICY CONDITIONS.

206th YEAR.

SUN FIRE OFFICE

FOUNDED 1710.

The Oldest Insurance Office in the World.

Head Office: 63, THREADNEEDLE STREET, LONDON, E.C.

Branches and Agencies
throughout the World.

Capital Paid Up & other Funds **£3,324,985**
Capital Subscribed but Uncalled **£1,920,000**
TOTAL ... £5,244,985

COMMERCIAL UNION ASSURANCE CO., LTD.

In which is now merged the "Hand-in-Hand" Insurance Society.

FIRE—LIFE—MARINE—ACCIDENT.

Capital Fully Subscribed	£2,950,000
Capital Paid up	£295,000
Life Funds	£6,119,520
Special Trust Funds:—	
"West of England"	£526,880
"Hand-in-Hand"	£3,668,895
"Union Life Fund"	£4,078,216
"Liverpool Victoria Life Fund"	£132,376
Other Assets	£12,248,628
Total, 31st December, 1914	£26,774,505
Total Annual Income Exceeds	£9,000,000

HEAD OFFICE: 24, 25 & 26, CORNHILL, LONDON, E.C.

The following classes of Insurances effected:—Fire, Life and Annuities, Marine, Losses, Household Redemption and Sinking Fund, Accident (including Personal Accident, Third Party, Burglary, Plate Glass, Fidelity Guarantee, Employers' Liability and Workmen's Compensation). The Company will act as Trustees and Executors under Wills. Prospectuses and all information needful for effecting Assurances may be obtained at any of the Company's Offices or Agencies throughout the World.

BAYLISS, JONES & BAYLISS L^{td}

IRON FENCING, GATES, &c.

WOLVERHAMPTON AND LONDON

Catalogue free.

Please mention this Diary.

YÖST

THE TYPEWRITER for BEAUTIFUL WORK.

With or Without Adding and Subtracting Mechanism.

THE YÖST TYPEWRITER CO., Ltd.
Head Office: 50, HOLBORN VIADUCT, LONDON, E.C.
BRANCHES EVERYWHERE.



ELVERYS Guaranteed WATERPROOFS

famous throughout the world.

... OUR EXCLUSIVE SPECIALITÉ ...

Featherweight Silk Waterproofs, all Colours,
Weight only 14 ozs.

Special 42/- Value. Also for Gentlemen at 52/-

Double Stormproofs, best quality, London made.

Gents 100/- Ladies 80/-

Guaranteed Waterproofs for all Climates, from 48/-

Colonial orders receive prompt attention. Write for descriptive booklet.

ELEPHANT HOUSE, 31, CONDUIT ST., LONDON, W.
ESTD. 1850. (One door from New Bond Street.)

Also at DUBLIN and CORK.

The Ever-Popular Household Remedy

which has now borne the Stamp of Public
Approval for **OVER FORTY YEARS.**



ENO'S 'FRUIT SALT'

PLEASANT TO TAKE.

REFRESHING AND INVIGORATING.

There is no simpler, safer, or more agreeable aperient
which will, by natural means, get rid of dangerous waste
matter, without depressing the spirits or lowering the
vitality.

Gentle and safe in its action, it does not cause griping or
weakness. Always keep it in the house or in your
travelling bag in readiness for emergencies.

Prepared only by

J. C. ENO, LTD., 'FRUIT SALT' WORKS, LONDON, S.E.

Sold by Chemists and Stores everywhere.

Letts's
 INDIAN AND COLONIAL
 ROUGH DIARY
 AND ALMANAC

FOR

1916

(LEAP YEAR),

BEING THE SEVENTH YEAR OF THE REIGN OF HIS MAJESTY
 KING GEORGE V.—(*Accession, May 6, 1910.*)

OCTAVO SERIES.

No.			Plain.		Inter-Blotting.		Blotting-Cloth.	
			s.	d.	s.	d.	s.	d.
No. 35	Week in opening	1	0	1	6	2	6
.. 36	Week on page	—	—	1	0	—	—
.. 45	One day on page	... cloth back	3	0	—	—	5	0
.. 46	Two days on page	... cloth back	2	6	—	—	4	0
.. 47	Week in opening	... cloth back	—	—	1	0	1	6
.. 100	One day on page	... cloth boards	4	0	—	—	—	—
.. 101	Two days on page	... cloth boards	3	0	—	—	—	—
.. 102	Week in opening	... cloth boards	2	0	—	—	—	—

PUBLISHED FOR

LETTS' DIARIES COMPANY, LIMITED,
 BY
CASSELL & COMPANY, LIMITED,
 LONDON, NEW YORK, TORONTO & MELBOURNE.

[ALL RIGHTS RESERVED.]

For Full Description whereby to obtain a Counterpart of this Diary, see Order Form.

Hazell, Watson & Viney, Ltd., Printers, London & Aylesbury.

ECLIPSES IN 1916.

Of the SUN, Three; of the MOON, Two.
I. JANUARY 20. Partial Eclipse of the Moon. Visible in the extreme W. of Europe, the Atlantic, N. and S. America, the Pacific, and N.E. Asia.

Moon enters shadow 7 55 a.m.
 " leaves 9 24 ..

II. FEBRUARY 3. Total Eclipse of the Sun. Line of Central Eclipse crosses the E. Pacific, Columbia, N.W. of Venezuela, Guadalupe, the Azores, and ends in Long. 10°W, Lat. 40°N. Partial Eclipse visible in N. America (except N.W.) in N.W. of S. America, the Atlantic, N.W. Africa, Portugal, Spain, France, and the British Isles.

	<i>h.m.</i>	<i>Long.</i>	<i>Lat.</i>
Eclipse begins	1 27 p.m.	109°W	3°S
Central	2 29 ..	122°W	7°N
" ends	5 31 ..	10°W	49°N
"	6 33 ..	19°W	39°N

<i>At</i>	<i>h.m.</i>	<i>At</i>	<i>h.m.</i>
Dublin .. 4 2 p.m.*	Oxford .. 4 30 p.m.		
Edinburgh 4 27 ..	Cambridge .. 4 30 ..		
Liverpool.. 4 28 ..	London .. 4 31 ..		

*Irish Time.

III. JULY 15. Partial Eclipse of the Moon. Visible in Africa, S.W. Europe, the Atlantic, N. and S. America, and the S. Pacific.

Moon enters shadow 3 19 a.m.
 " leaves 6 12 ..

IV. JULY 29-30. Annular Eclipse of the Sun. Line of Central Eclipse crosses Australia between Shark's Bay and Exmouth Gulf, over Townsend Ranges, E. of Lake Gairdner, Adelaide and Tasmania. Partial Eclipse visible in Malay Peninsula, Further India, the Philippines, Malaysia, Australia, Tasmania and New Zealand.

	<i>d.</i>	<i>h.m.</i>	<i>Long.</i>	<i>Lat.</i>
Eclipse begins	29	11 25 p.m.	103°E	9°S
Central	30	0 51 a.m.	90°E	20°S
" ends	30	3 21 ..	179°E	64°S
"	30	4 47 ..	179°E	46°S

<i>At</i>	<i>d.</i>	<i>h.m.</i>	<i>At</i>	<i>h.m.</i>
Adelaide ..	30	10 13 a.m.	1 45 p.m.	Standard Time.
" (Annular)	11	57 ..	0 3 ..	
Perth ..	7	58 ..	11 16 a.m.	
Melbourne ..	11	2 ..	2 26 p.m.	
Sydney ..	11	12 ..	2 32 ..	
Wellington, N.Z. ..	1	41 p.m.	4 16 ..	

V. DECEMBER 24. Partial Eclipse of the Sun. Visible only in the Antarctic regions.

THE ROYAL FAMILY.

Date of Birth, and Age in 1916.

King George V. .. June 3, 1865—51
 Queen Mary May 26, 1867—49
 (Married July 6, 1893.)
 Prince of Wales .. June 23, 1894—22
 Prince Albert .. Dec. 14, 1895—21
 Princess Victoria Alexandra
 (Princess Mary) .. April 25, 1897—19
 Prince Henry .. Mar. 31, 1900—16
 Prince George .. Dec. 20, 1902—14
 Prince John .. July 12, 1905—11

Mother and Sisters of the King.

Queen Alexandra .. Dec. 1, 1844—72
 Princess Royal .. Feb. 20, 1867—49
 Princess Victoria .. July 6, 1868—48
 Princess Maud Charlotte
 (Queen of Norway) Nov. 26, 1869—47

TIME STANDARDS.

The Time Standards used are:—
 1. *Greenwich Mean Time* for Eclipses (unless otherwise stated) and High Water London Bridge. 2. *Indian Time* for all other data.

	Add to	
	<i>Greenwich.</i>	<i>Indian.</i>
For Standard Time in	<i>h.</i>	<i>h.</i>
India	5½	..
Burmah	6½	1
Straits Settlements ..	7	1½
Hong Kong, Borneo, } Philippines	8	2½
Japan, Corea	9	3½

INDIAN GOVERNORS.

*INDIA—*Viceroy & Governor-General*—
 The Rt. Hon. Lord Hardinge, G.C.B.,
 G.M.S.I., G.C.M.G., G.M.I.E., G.C.V.O.
 (Rs. 20,900).

Madras—Governor—The Rt. Hon. Lord Pentland, G.C.I.E. (Rs. 10,000).

Bombay—Governor—Lord Willingdon, G.C.I.E., (Rs. 10,000).

Bengal—Governor—Lord Carmichael, G.C.I.E., K.C.M.G. (Rs. 10,000).

United Provinces of Agra and Oudh—Lieutenant-Governor—Sir J. S. Meston, K.C.S.I. (Rs. 8,333).

Punjab—Lieut.-Governor—Sir M. F. O'Dwyer, K.C.S.I. (Rs. 8,333).

Bihar and Orissa—Lieut.-Governor—Sir C. S. Bayley, G.C.I.E., K.C.S.I. (Rs. 8,333).

Burma—Lieutenant-Governor—Sir S. H. Butler, K.C.S.I., C.I.E. (Rs. 8,333).

Assam—Chief Commissioner—Sir A. Earle, K.C.I.E. (Rs. 5,166).

Delhi—Chief Commissioner—W. M. Hailey, C.S.I., C.I.E. (Rs. 3,000).

Central Prov.—Chief Commissioner—Sir B. Robertson, K.C.S.I., K.C.M.G., C.I.E. (Rs. 5,166).

* Salaries are (excluding allowances) stated in Rupees per mensem.

ALMANAC FOR 1917.

	JAN.							JULY						
	Sun.	Mon.	Tu.	We.	Th.	Fri.	Sat.	Sun.	Mon.	Tu.	We.	Th.	Fri.	Sat.
JAN.	1	2	3	4	5	6	7	1	2	3	4	5	6	7
FEB.	8	9	10	11	12	13	14	8	9	10	11	12	13	14
MAR.	15	16	17	18	19	20	21	15	16	17	18	19	20	21
APRIL	22	23	24	25	26	27	28	22	23	24	25	26	27	28
MAY	29	30	31	29	30	31
JUNE
	1	2	3	4	5	6	7	1	2	3	4	5	6	7
	8	9	10	11	12	13	14	8	9	10	11	12	13	14
	15	16	17	18	19	20	21	15	16	17	18	19	20	21
	22	23	24	25	26	27	28	22	23	24	25	26	27	28
	29	30	31	29	30	31

	1	2	3	4	5	6	7	1	2	3	4	5	6	7
	8	9	10	11	12	13	14	8	9	10	11	12	13	14
	15	16	17	18	19	20	21	15	16	17	18	19	20	21
	22	23	24	25	26	27	28	22	23	24	25	26	27	28
	29	30	31	29	30	31

	1	2	3	4	5	6	7	1	2	3	4	5	6	7
	8	9	10	11	12	13	14	8	9	10	11	12	13	14
	15	16	17	18	19	20	21	15	16	17	18	19	20	21
	22	23	24	25	26	27	28	22	23	24	25	26	27	28
	29	30	31	29	30	31

	1	2	3	4	5	6	7	1	2	3	4	5	6	7
	8	9	10	11	12	13	14	8	9	10	11	12	13	14
	15	16	17	18	19	20	21	15	16	17	18	19	20	21
	22	23	24	25	26	27	28	22	23	24	25	26	27	28
	29	30	31	29	30	31

	1	2	3	4	5	6	7	1	2	3	4	5	6	7
	8	9	10	11	12	13	14	8	9	10	11	12	13	14
	15	16	17	18	19	20	21	15	16	17	18	19	20	21
	22	23	24	25	26	27	28	22	23	24	25	26	27	28
	29	30	31	29	30	31

SUN RISES AND SETS, 1916.

1916.	Delhi.		Calcutta		Madras		Bombay	
	R.	S.	R.	S.	R.	S.	R.	S.
Jan. 1	7 14	5 35	6 17	5 3	6 31	5 53	7 11	6 12
11	7 15	5 42	6 19	5 10	6 35	5 59	7 14	6 19
21	7 14	5 51	6 19	5 17	6 36	6 57	7 15	6 25
31	7 10	5 59	6 17	5 24	6 36	6 9	7 14	6 31
Feb. 10	7 4	6 7	6 12	5 30	6 34	6 13	7 10	6 36
20	6 56	6 14	6 6	5 35	6 30	6 16	7 5	6 41
Mar. 2	6 46	6 21	5 58	5 40	6 25	6 18	6 58	6 44
12	6 35	6 27	5 49	5 44	6 19	6 19	6 50	6 47
22	6 24	6 33	5 40	5 48	6 13	6 20	6 42	6 50
Apr. 1	6 12	6 38	5 30	5 52	6 6	6 21	6 34	6 53
11	6 1	6 44	5 21	5 55	6 0	6 21	6 26	6 55
21	5 51	6 50	5 13	5 59	5 53	6 22	6 18	6 58
May 1	5 41	6 56	5 5	6 3	5 48	6 24	6 11	7 1
11	5 33	7 2	4 59	6 7	5 45	6 26	6 6	7 4
21	5 27	7 8	4 55	6 12	5 42	6 28	6 3	7 7
31	5 24	7 13	4 52	6 16	5 41	6 31	6 17	7 11
June 10	5 22	7 18	4 51	6 20	5 41	6 34	6 0	7 15
20	5 23	7 21	4 52	6 23	5 43	6 37	6 27	7 18
30	5 26	7 23	4 55	6 25	5 45	6 39	6 47	7 20
July 10	5 30	7 22	4 58	6 25	5 48	6 40	6 7	7 20
20	5 35	7 19	5 2	6 23	5 51	6 39	6 11	7 19
30	5 41	7 14	5 6	6 19	5 53	6 37	6 14	7 16
Aug. 9	5 46	7 7	5 11	6 13	5 55	6 33	6 18	7 11
19	5 52	6 57	5 15	6 6	5 57	6 29	6 21	7 4
29	5 57	6 47	5 18	5 58	5 58	6 23	6 23	6 57
Sept. 8	6 2	6 36	5 21	5 49	5 58	6 16	6 25	6 49
18	6 7	6 24	5 24	5 39	5 58	6 9	6 26	6 40
28	6 12	6 12	5 27	5 29	5 58	6 2	6 28	6 31
Oct. 8	6 17	6 0	5 30	5 19	5 59	5 55	6 30	6 23
18	6 23	5 49	5 34	5 10	6 0	5 49	6 33	6 15
28	6 30	5 40	5 39	5 3	6 2	5 45	6 37	6 9
Nov. 7	6 37	5 32	5 44	4 57	6 4	5 42	6 41	6 4
17	6 45	5 27	5 50	4 53	6 8	5 39	6 46	6 1
27	6 53	5 24	5 57	4 51	6 13	5 39	6 52	6 0
Dec. 7	7 1	5 24	6 4	4 52	6 19	5 42	6 58	6 1
17	7 7	5 27	6 10	4 55	6 24	5 45	7 4	6 4
27	7 12	5 32	6 15	5 0	6 29	5 50	7 0	6 9

h.m. h.m.
 For Baroda add 1 0 For Mangalore add 0 22
 „ Mandalay „ 0 29 „ Bangalore „ 0 10
 „ Hongkong „ 0 47 „ Bangkok subtr. 0 22
 To Calcutta. Toor from Madras.

CHRONOLOG'L NOTES.

Golden No. 17 Dom. Letters B, A
 Epact .. 25 Roman Indiction 14
 Solar Cycle 21 Jul'n P. (yr. of) 6629

INDIAN WEIGHTS AND MEASURES.

Mud. Seers. Chittacks. Tolas. Avoir.
 1 = 40 = 640 = 3200 = 82½ lbs.
 1 = 16 = 80 = 2½ oz.,
 1 = 5 = 2½ oz.,
 1 = 61½ dr.

1 ton = 27'222 Maunds.
 The standards of lineal and square measure vary with the province and the purpose.

INDIAN MONEY TABLE.

Mohur. Rupees. Annas. Pice. Pie.
 (Gold.) (Silver.)
 1 = 16 = 256 = 1,024 = 3,072
 1 = 16 = 64 = 192
 1 = 4 = 12
 1 = 1 = 3
 100,000 Rupees = 1 Lakh or Lac
 100 Lakhs = 1 Crore
 15 Rupees = 1 Sovereign.

INTEREST TABLE.

FROM 5 TO 12 PER CENT. ON RS. 100.
 Calculated for 1 Year (365 Days), 1 Calendar Month, 1 Week, and 1 Day.

1 Year	1 Month	1 Week	1 Day
RS.	RS. A. P.	A. P.	P.
5	0 6 8	1 6	2'630
6	0 8 0	1 10	3'156
7	0 9 4	2 1	3'682
8	0 10 8	2 5	4'208
9	0 12 0	2 9	4'734
10	0 13 4	3 0	5'260
11	0 14 8	3 4	5'786
12	1 0 0	3 8	6'312

The column 1 Year is also the rate per cent.

PHASES OF THE MOON, 1916.

● New Moon; ☾ First Quarter; ○ Full Moon; ☾ Last Quarter.

d.	h. m.	d.	h. m.	d.	h. m.	d.	h. m.
Jan. 5	● 10 15 a.m.	Apr. 2	● 9 51 p.m.	July 8	☾ 5 25 p.m.	Oct. 4	☾ 4 30 p.m.
12	☾ 9 8 a.m.	10	☾ 8 6 p.m.	15	○ 10 10 a.m.	11	○ 0 31 p.m.
20	○ 1 59 p.m.	18	○ 10 37 a.m.	22	☾ 5 3 a.m.	19	☾ 6 39 a.m.
28	☾ 6 5 a.m.	25	☾ 4 8 a.m.	30	● 7 45 a.m.	27	● 2 7 a.m.
Feb. 3	● 9 36 p.m.	May 2	● 10 59 a.m.	Aug. 7	☾ 2 36 a.m.	Nov. 2	☾ 11 21 p.m.
11	☾ 3 50 a.m.	10	☾ 2 17 p.m.	13	○ 5 30 p.m.	10	○ 1 48 a.m.
19	○ 7 59 a.m.	17	○ 7 41 p.m.	20	☾ 6 23 p.m.	18	☾ 3 30 a.m.
26	☾ 2 54 p.m.	24	☾ 10 46 a.m.	28	● 10 55 p.m.	25	● 2 20 p.m.
Mar. 4	● 9 28 a.m.	June 1	● 1 7 a.m.	Sept. 5	☾ 9 56 a.m.	Dec. 2	☾ 7 25 a.m.
12	○ 0 3 a.m.	9	☾ 5 29 a.m.	12	○ 2 1 a.m.	9	○ 6 14 p.m.
19	○ 10 57 p.m.	16	○ 3 12 a.m.	19	☾ 11 5 a.m.	17	☾ 11 36 p.m.
26	☾ 9 52 p.m.	22	☾ 6 46 p.m.	27	● 1 4 p.m.	25	● 2 1 a.m.
		30	● 4 13 p.m.			31	☾ 5 37 p.m.

For Burma add 1h.; Straits Settlements, add 1½h.; Hongkong, East Coast of China, Philippines, Labuan and Borneo add 2½h.; Japan and Corea add 3½h.

JANUARY, 1916.

M.W. Y.	SUNDAYS, &C.	High Water at Lon. Bdge.	
		A. M.	P. M.
1 S.	1 Circumcision	9 25	10 5
2 S.	2 2 after Christmas	10 41	11 16
3 M.	3	11 52	—
4 Tu.	4	0 25	0 56
5 W.	5	1 25	1 52
6 Th.	6 Epiphany. Twelfth	2 18	2 45
7 F.	7 [Day]	3 9	3 34
8 S.	8	3 58	4 23
9 S.	9 1 after Epiphany	4 45	5 6
10 M.	10	5 27	5 48
11 Tu.	11	6 9	6 31
12 W.	12	6 51	7 15
13 Th.	13	7 37	8 2
14 F.	14	8 31	9 4
15 S.	15	9 43	10 24
16 S.	16 2 after Epiphany	11 1	11 39
17 M.	17	—	0 14
18 Tu.	18	0 44	1 8
19 W.	19	1 29	1 51
20 Th.	20	2 10	2 27
21 F.	21	2 44	3 0
22 S.	22	3 16	3 34
23 S.	23 3 after Epiphany	3 49	4 4
24 M.	24	4 21	4 39
25 Tu.	25 Conver. of St. Paul	4 53	5 0
26 W.	26	5 26	5 46
27 Th.	27	6 4	6 23
28 F.	28	6 45	7 9
29 S.	29	7 36	8 7
30 S.	30 4 after Epiphany	8 41	9 21
31 M.	31	10 10	10 57

FEBRUARY, 1916.

M.W. Y.	SUNDAYS, &C.	High Water at Lon. Bdge.	
		A. M.	P. M.
1 Tu.	32	11 41	—
2 W.	33 Purification of V. [Mary]	0 20	0 54
3 Th.	34	1 21	1 49
4 F.	35	2 13	2 36
5 S.	36	2 58	3 21
6 S.	37 5 after Epiphany	3 42	4 1
7 M.	38	4 21	4 40
8 Tu.	39	5 0	5 17
9 W.	40	5 33	5 51
10 Th.	41	6 9	6 27
11 F.	42	6 47	7 10
12 S.	43	7 35	8 5
13 S.	44 6 after Epiphany	8 41	9 25
14 M.	45	10 13	10 57
15 Tu.	46	11 39	—
16 W.	47	0 17	0 46
17 Th.	48	1 11	1 30
18 F.	49	1 50	2 8
19 S.	50	2 25	2 40
20 S.	51 Septuagesima Sun.	2 55	3 9
21 M.	52	3 24	3 40
22 Tu.	53	3 56	4 11
23 W.	54	4 28	4 44
24 Th.	55 St. Matthias, Ap.	5 0	5 17
25 F.	56	5 36	5 55
26 S.	57	6 17	6 40
27 S.	58 Sexagesima	7 8	7 41
28 M.	59 [Sunday]	8 22	9 7
29 Tu.	60	10 0	10 51

MARCH, 1916.

M.W. Y.	SUNDAYS, &C.	High Water at Lon. Bdge.	
		A. M.	P. M.
1 W.	61 St. David	11 36	—
2 Th.	62	0 16	0 48
3 F.	63	1 13	1 36
4 S.	64	2 0	2 20
5 S.	65 Quinquagesima	2 39	2 58
6 M.	66 [Sunday]	3 17	3 35
7 Tu.	67 Shrove Tuesday	3 52	4 10
8 W.	68 Ash Wednesday.	4 26	4 44
9 Th.	69 [Lent begins]	4 59	5 15
10 F.	70	5 32	5 49
11 S.	71	6 9	6 31
12 S.	72 1 in Lent. Ember	6 54	7 20
13 M.	73 [Week]	7 54	8 35
14 Tu.	74	9 22	10 14
15 W.	75 Ember Day	10 58	11 38
16 Th.	76 [Day]	—	0 10
17 F.	77 St. Patrick. Ember	0 37	0 58
18 S.	78 Ember Day	1 16	1 34
19 S.	79 2 in Lent	1 52	2 8
20 M.	80	2 23	2 38
21 Tu.	81	2 53	3 9
22 W.	82	3 26	3 43
23 Th.	83	4 0	4 19
24 F.	84	4 38	4 58
25 S.	85 Annunciation	5 17	5 40
26 S.	86 3 in Lent	6 4	6 29
27 M.	87	7 1	7 36
28 Tu.	88	8 19	9 7
29 W.	89	9 59	10 46
30 Th.	90	11 25	—
31 F.	91	0 1	0 29

APRIL, 1916.

M.W. Y.	SUNDAYS, &C.	High Water at Lon. Bdge.	
		A. M.	P. M.
1 S.	92	0 53	1 14
2 S.	93 4 in Lent	1 35	1 55
3 M.	94	2 14	2 31
4 Tu.	95	2 50	3 6
5 W.	96	3 24	3 40
6 Th.	97	3 58	4 13
7 F.	98	4 31	4 47
8 S.	99	5 4	5 22
9 S.	100 5 in Lent	5 42	6 2
10 M.	101	6 25	6 52
11 Tu.	102	7 21	7 58
12 W.	103	8 38	9 22
13 Th.	104	10 7	10 44
14 F.	105	11 17	11 46
15 S.	106	—	0 10
16 S.	107 Palm Sunday	0 32	0 52
17 M.	108	1 9	1 27
18 Tu.	109	1 45	2 3
19 W.	110	2 21	2 39
20 Th.	111 Maundy Thursday	2 59	3 19
21 F.	112 Good Friday	3 39	4 1
22 S.	113 Easter Even	4 22	4 44
23 S.	114 Easter D. St. George	5 9	5 33
24 M.	115 Easter Monday	6 1	6 32
25 Tu.	116 Easter Tuesday. St. [Mark, Evan.]	7 5	7 40
26 W.	117	8 20	9 2
27 Th.	118	9 45	10 23
28 F.	119	10 55	11 28
29 S.	120	11 58	—
30 S.	121 Low Sun.—1 after [Easter]	0 22	0 45

MAY, 1916.

M.W. Y.	SUNDAYS, &C.	High Water at Lon. Bdge.	
		A.M.	P.M.
1 M. 122	SS. Philip & James	1 5	1 26
2 Tu. 123		1 46	2 6
3 W. 124		2 24	2 41
4 Th. 125		2 59	3 16
5 F. 126		3 34	3 51
6 S. 127	King's Acces., 1910	4 9	4 28
7 S. 128	2 after Easter	4 45	5 1
8 M. 129		5 21	5 42
9 Tu. 130	Proc., King Geo. V.	6 5	6 28
10 W. 131		6 55	7 24
11 Th. 132		7 56	8 30
12 F. 133		9 6	9 44
13 S. 134		10 16	10 45
14 S. 135	3 after Easter	11 12	11 40
15 M. 136		—	0 4
16 Tu. 137		0 27	0 48
17 W. 138		1 10	1 33
18 Th. 139		1 54	2 15
19 F. 140		2 39	3 1
20 S. 141		3 25	3 50
21 S. 142	4 after Easter	4 15	4 41
22 M. 143		5 7	5 33
23 Tu. 144		6 1	6 31
24 W. 145	(Empire Day)	7 0	7 32
25 Th. 146		8 5	8 38
26 F. 147	Qn. Mary born, 1867	9 12	9 44
27 S. 148		10 17	10 49
28 S. 149	Rogation Sunday	11 20	11 48
29 M. 150	Rogation Day	—	0 15
30 Tu. 151	Rogation Day	0 39	1 1
31 W. 152	Rogation Day	1 23	1 46

JUNE, 1916.

M.W. Y.	SUNDAYS, &C.	High Water at Lon. Bdge.	
		A.M.	P.M.
1 Th. 153	Ascension Day	2 4	2 23
2 F. 154		2 42	2 59
3 S. 155	King Geo. V. b., 1865.	3 18	3 36
4 S. 156	Sun. aft. Ascension	3 53	4 10
5 M. 157		4 29	4 46
6 Tu. 158		5 4	5 23
7 W. 159		5 44	6 5
8 Th. 160		6 27	6 50
9 F. 161		7 15	7 42
10 S. 162		8 9	8 39
11 S. 163	Whit. S. Ember W. St. Barnabas, Ap.	9 11	9 43
12 M. 164	Whitsun Monday	10 14	10 46
13 Tu. 165	Whitsun Tuesday	11 16	11 46
14 W. 166	Ember Day	—	0 14
15 Th. 167		0 41	1 7
16 F. 168	Ember Day	1 35	2 1
17 S. 169	Ember Day	2 26	2 52
18 S. 170	Trinity Sunday	3 18	3 43
19 M. 171		4 10	4 35
20 Tu. 172		5 1	5 25
21 W. 173	[King Geo. V., 1911	5 52	6 18
22 Th. 174	Corpus Christi, Cor.	6 42	7 7
23 F. 175	P. of Wales b., 1894	7 32	7 59
24 S. 176	St. John Baptist	8 27	8 58
25 S. 177	1 after Trinity	9 31	10 5
26 M. 178		10 38	11 11
27 Tu. 179		11 44	—
28 W. 180		0 15	0 41
29 Th. 181	St. Peter, Ap.	1 4	1 27
30 F. 182		1 50	2 9

JULY, 1916.

M.W. Y.	SUNDAYS, &C.	Canada	High Water at Lon. Bdge.	
			A.M.	P.M.
1 S. 183	Dominion Day,		2 28	2 46
2 S. 184	2 aft. Trin. Ramadan		3 4	3 20
3 M. 185	[(Turk. L.) begins		3 37	3 54
4 Tu. 186	Dec. of Amer. Ind.		4 11	4 30
5 W. 187			4 46	5 3
6 Th. 188			5 21	5 37
7 F. 189			5 57	6 17
8 S. 190			6 37	7 0
9 S. 191	3 after Trinity		7 24	7 49
10 M. 192			8 16	8 49
11 Tu. 193			9 24	10 1
12 W. 194			10 38	11 14
13 Th. 195			11 52	—
14 F. 196			0 24	0 55
15 S. 197			1 23	1 53
16 S. 198	4 after Trinity		2 19	2 45
17 M. 199			3 0	3 34
18 Tu. 200			3 58	4 21
19 W. 201			4 44	5 7
20 Th. 202			5 29	5 49
21 F. 203			6 10	6 33
22 S. 204			6 54	7 17
23 S. 205	5 after Trinity		7 41	8 8
24 M. 206			8 37	9 14
25 Tu. 207	St. James, Ap.		9 54	10 34
26 W. 208			11 13	11 50
27 Th. 209			—	0 23
28 F. 210			0 49	1 13
29 S. 211			1 35	1 55
30 S. 212	6 after Trinity		2 14	2 31
31 M. 213			2 46	3 2

AUGUST, 1916.

M.W. Y.	SUNDAYS, &C.	Canada	High Water at Lon. Bdge.	
			A.M.	P.M.
1 Tu. 214			3 17	3 33
2 W. 215			3 49	4 5
3 Th. 216			4 22	4 37
4 F. 217	War declared between		4 53	5 8
5 S. 218	(Gt Brit'n & Germany '14		5 24	5 42
6 S. 219	7 after Trinity		6 1	6 21
7 M. 220			6 45	7 10
8 Tu. 221			7 37	8 9
9 W. 222			8 46	9 30
10 Th. 223			10 17	11 2
11 F. 224			11 44	—
12 S. 225			0 21	0 50
13 S. 226	8 after Trinity		1 17	1 44
14 M. 227			2 8	2 31
15 Tu. 228			2 54	3 16
16 W. 229			3 37	3 59
17 Th. 230			4 18	4 39
18 F. 231			4 58	5 16
19 S. 232			5 33	5 54
20 S. 233	9 after Trinity		6 14	6 34
21 M. 234			6 57	7 23
22 Tu. 235			7 53	8 27
23 W. 236			9 10	0 59
24 Th. 237	St. Bartholomew, [Ap.		10 43	11 23
25 F. 238			—	0 1
26 S. 239			0 29	0 53
27 S. 240	10 after Trinity		1 13	1 32
28 M. 241			1 50	2 6
29 Tu. 242			2 21	2 36
30 W. 243			2 51	3 5
31 Th. 244			3 21	3 36

SEPTEMBER, 1916.

M.W. Y.	SUNDAYS, &c.	High Water at Lon. Bdge.	
		A.M.	P.M.
1 F.	245	3 51	4 7
2 S.	246	4 23	4 39
3 S.	247	11 after Trinity	
4 M.	248	4 56	5 13
5 Tu.	249	5 31	5 53
6 W.	250	6 16	6 42
7 Th.	251	7 14	7 50
8 F.	252	8 32	9 20
9 S.	253	10 11	10 57
10 S.	254	12 after Trinity	
11 M.	255	11 37	—
12 Tu.	256	0 10	0 39
13 W.	257	1 3	1 28
14 Th.	258	1 50	2 11
15 F.	259	2 32	2 51
16 S.	260	3 9	3 20
17 S.	261	3 48	4 8
18 M.	262	4 26	4 44
19 Tu.	263	13 after Trinity.	
20 W.	264	[Ember Week	
21 Th.	265	5 0	5 17
22 F.	266	5 37	5 59
23 S.	267	6 20	6 45
24 S.	268	7 13	7 48
25 M.	269	8 32	9 19
26 Tu.	270	10 7	10 48
27 W.	271	11 24	11 55
28 Th.	272	14 after Trinity	
29 F.	273	—	0 19
30 S.	274	0 41	0 59
		1 16	1 33
		1 49	2 3
		2 19	2 33
		2 50	3 4
		3 22	3 38

OCTOBER, 1916.

M.W. Y.	SUNDAYS, &c.	High Water at Lon. Bdge.	
		A.M.	P.M.
1 S.	275	15 after Trinity	
2 M.	276	3 56	4 15
3 Tu.	277	4 34	4 52
4 W.	278	5 13	5 37
5 Th.	279	6 2	6 31
6 F.	280	7 4	7 45
7 S.	281	8 30	9 20
8 S.	282	10 6	10 47
9 M.	283	11 23	11 54
10 Tu.	284	—	0 20
11 W.	285	0 43	1 6
12 Th.	286	1 28	1 48
13 F.	287	2 6	2 26
14 S.	288	2 44	3 3
15 S.	289	3 21	3 39
16 M.	290	17 after Trinity	
17 Tu.	291	3 57	4 16
18 W.	292	4 33	4 50
19 Th.	293	5 9	5 29
20 F.	294	5 50	6 15
21 S.	295	6 43	7 15
22 S.	296	7 50	8 28
23 M.	297	9 11	9 53
24 Tu.	298	10 31	11 3
25 W.	299	11 32	11 55
26 Th.	300	—	0 18
27 F.	301	0 36	0 54
28 S.	302	1 12	1 31
29 S.	303	1 47	2 4
30 M.	304	2 22	2 39
31 Tu.	305	18 after Trinity	
		2 58	3 17
		3 37	3 58
		4 20	4 43

NOVEMBER, 1916.

M.W. Y.	SUNDAYS, &c.	High Water at Lon. Bdge.	
		A.M.	P.M.
1 W.	306	All Saints' Day	
2 Th.	307	5 6	5 30
3 F.	308	6 1	6 30
4 S.	309	7 3	7 42
5 S.	310	20 after Trinity	
6 M.	311	8 21	9 3
7 Tu.	312	9 44	10 21
8 W.	313	10 55	11 26
9 Th.	314	11 54	—
10 F.	315	0 18	0 40
11 S.	316	1 2	1 25
12 S.	317	1 44	2 4
13 M.	318	2 24	2 42
14 Tu.	319	21 after Trinity	
15 W.	320	3 1	3 19
16 Th.	321	3 37	3 56
17 F.	322	4 14	4 33
18 S.	323	4 50	5 8
19 S.	324	5 28	5 51
20 M.	325	6 14	6 40
21 Tu.	326	7 7	7 36
22 W.	327	22 after Trinity	
23 Th.	328	8 7	8 42
24 F.	329	9 20	9 55
25 S.	330	10 27	10 55
26 S.	331	11 23	11 48
27 M.	332	—	0 11
28 Tu.	333	0 32	0 53
29 W.	334	1 15	1 38
30 Th.	335	23 after Trinity	
		1 59	2 20
		2 41	3 4
		3 27	3 51
		4 15	4 41
		5 5	5 30

DECEMBER, 1916.

M.W. Y.	SUNDAYS, &c.	High Water at Lon. Bdge.	
		A.M.	P.M.
1 F.	336	Q. Alexandra b., 1844	
2 S.	337	5 59	6 26
3 S.	338	6 56	7 25
4 M.	339	1 in Advent	
5 Tu.	340	7 57	8 31
6 W.	341	9 6	9 40
7 Th.	342	10 15	10 47
8 F.	343	11 18	11 48
9 S.	344	—	0 17
10 S.	345	0 42	1 5
11 M.	346	1 30	1 50
12 Tu.	347	2 in Advent	
13 W.	348	2 10	2 30
14 Th.	349	2 47	3 6
15 F.	350	3 24	3 43
16 S.	351	4 1	4 19
17 S.	352	4 35	4 53
18 M.	353	5 10	5 28
19 Tu.	354	5 49	6 9
20 W.	355	3 in Advent. Emb. [Week	
21 Th.	356	6 26	6 51
22 F.	357	7 16	7 41
23 S.	358	8 10	8 39
24 S.	359	9 12	9 46
25 M.	360	10 21	10 53
26 Tu.	361	11 24	11 56
27 W.	362	—	0 24
28 Th.	363	4 in Advent	
29 F.	364	0 51	1 17
30 S.	365	1 42	2 8
31 S.	366	2 32	2 57
		3 21	3 46
		4 10	4 34
		4 59	5 22
		5 46	6 11
		1 after Christmas	
		6 35	6 59

TIDAL CONSTANTS.

The approximate standard time of High Water may be found by adding to, or subtracting from, the time of High Water at London Bridge, given in the calendar, the corrections given as below:—

	h.	m.
Gibraltar	sub.	0 32
Malta	add	1 32
Karachi	sub.	2 47
Bombay	"	1 54
Goa	"	2 55
Point de Galle	"	0 7
Madras	"	5 6
Calcutta	"	0 32
Rangoon Town	add	2 35
River Entrance	"	1 25
Halifax, N.S.	"	6 14
St. John's, Newfoundland	"	5 11
Quebec	"	4 35
Penang	sub.	1 54
Singapore	"	3 33
Hongkong	"	4 51
Shanghai	"	0 52
Yokohama	add	3 6
Valparaiso	sub.	4 17
Buenos Ayres	add	* 4 21
Monte Video	"	* 0 32

* Local Time.

THE CALENDARS.

The Jewish is in accordance with the system arranged A.D. 358. The Calendar dates from the Creation, which is fixed as 3760 years and 3 months before the beginning of the Christian Era; the year is Luni-solar.

The Mohammedan, or era of the Hejira, dates from the day after Mahomet's flight from Mecca, which occurred on the night of July 15, 622 A.D. The months are Lunar.

The Fasli year was derived from a combination of the Hejira and Samvat years by the order of Akbar; it is Luni-solar. The Bengali year seems also to have been related at one time to the Hejira, but the fact of its being Solar made it lose 11 days each year.

The Samvat era dates from 57 B.C., and is Luni-solar. The months are divided into two fortnights—*sudi*, or bright, and *badi*, or dark. Each fortnight contains 15 tithis, which furnish the dates of the civil days given in our calendars.

JEWISH CALENDAR.

1916.	5076.	
Jan. 6	Sebat 1
Feb. 5	Adar 1
March 6	Veadar 1
" 16	Fast of Esther .. 11
" 19	Purim 14
" 20	Shushan Purim .. 15
April 4	Nisan 1
" 18	Fest. of Passover .. 15
" 19	" 2nd Day .. 16
" 24	" 7th 21
" 25	" 8th 22
May 4	Yiar 1
" 21	Fest. 33rd of Omer .. 18
June 2	Sivan 1
" 7	Pentecost, 1st Day .. 6
" 8	" 2nd 7
July 2	Tamuz 1
" 18	Fast of Tamuz .. 17
" 31	Ab 1
Aug. 8	Fast of Ab 9
" 30	Elul 1

JEWISH CALENDAR—contd.

1916.	5077.	
Sept. 28	New Year 5677 .. Tisri 1
" 29	" 2nd Day 2
Oct. 1	Fast of Guedaliah .. 4
" 7	Day of Atonement .. 10
" 12	Feast of Tabernacles .. 15
" 13	" 2nd Day 16
" 18	Hosana Raba 21
" 19	Feast of 8th Day .. 22
" 20	Rejoicing of the Law .. 23
" 28 Hesvan 1
Nov. 26 Kislev 1
Dec. 20	Dedication of Temple .. 25
" 26 Tebet 1

MOHAMMEDAN

CALENDAR.

1916.	1334.	
January 7	Rabia I. 1
February 6	Rabia II. 1
March 6	Jomada I. 1
April 5	Jomada II. 1
May 4	Rajab 1
June 3	Shaaban 1
July 2	Ramadan 1
August 1	Shawwal 1
" 30	Dulkaada 1
September 29	Dulheggia 1
October 28	Muharram 1
November 27	Saphar 1
December 26	Rabia I. 1

FASLI (N.W. INDIA).

1916.	1323.	
January 1	Pausha 11
" 21	Magha 1
February 20	Phalguna 1
March 20	Chaitra 1
April 19	Vaisakha 1
May 18	Jyaistha 1
June 16	Ashada 1
July 16	Sravana 1
August 14	Bhadra. 1
September 12	Asvina 1
October 12	Karttika 1
November 10	Marga. 1
December 10	Pausha 1

BENGALI.

1916.	1322.	
January 1	Pous 16
" 15	Magha 1
February 13	Phalguna 1
March 14	Chaitra 1
April 14	Vaisakha 1
May 14	Jyaistha 1
June 15	Ashada 1
July 17	Sravana 1
August 17	Bhadra. 1
September 17	Asvina 1
October 17	Karttika 1
November 16	Marga. 1
December 16	Pous 1

QUARTER DAYS.

English.	
LADY DAY	March 25
MIDSUMMER	June 24
MICHAELMAS	September 29
CHRISTMAS	December 25
Scottish.	
CANDLEMAS	February 2
WHITSUNDAY	May 15
LAMMAS	August 1
MARTINMAS	November 11
Half Quarter Days.	
Feb. 8; May 9; Aug. 11; Nov. 11.	

SAMVAT CALENDAR, 1916.

Day 1916.	January	February	March	April	May	June
	1912	1912	1912	1912-13	1913	1913
1	11 badi	13 badi	12 bādi	14 badi	14 badi	<i>Jyaistha</i> 1 sudi
2	12	14	13	15 <i>Chaitra</i>	15 <i>Vaisakha</i>	2
3	13	15 <i>Magha</i> 1 sudi	14	1 sudi	1 sudi	3
4	14		15 <i>Phalguna</i> 1 sudi	2	2	4 <i>d c</i>
5	15 <i>Pausha</i>	2		3	3	4
6	1 sudi	3	2	4	4	5
7	2 D B	4	3	5	5	6
8	4	5	4	6	6	7
9	5	6	5	7	7	8
10	6	7	6	8	8	9
11	7	8	7	8	9	10
12	8	9	8	9	10	11
13	9	10	9	10	11	12
14	10	11	10	11	12	13
15	11	12	11	12	13	15 <i>d c m</i>
16	12	13	12	13	14	1 badi
17	12 D B	14	13	14	15	2
18	13	14 D B	14	15	1 badi	3
19	14	15	15	1 badi	2	4
20	15	1 bad	1 badi	2	3	5
21	1 badi	2	2	4 <i>c</i>	4	6
22	2	3	3	5	5	7
23	3	4	4	6	7 <i>d c m b</i>	8
24	4	6	5	7	8	9
25	5	7	6	8	9	10
26	6	8	7	9	10	11
27	7	9	8	10	11	12
28	8	10	9	11	12	13
29	9	11	11	12	13	14
30	10	..	12	13	14	15
31	11 D B	..	13	..	15	..

This Calendar is for Lanka. The month name is inserted to 1 sudi only, so that where necessary it may be written in for 1 badi. The Calendar figures are correct for Delhi, Calcutta, Madras, and Bombay, except when followed by the initial letter of the place;

CEYLON POSTAL RATES.

Inland Rates.—*Letters*, per 4 oz., 5 cents. *District Letters*, 2 cents per oz., not exc. 2 oz. *Post Cards*, 2 cents; reply, 4 cents. *Letter Cards*, 5 cents. *Printed Matter*, not over 2 ozs., 2 cents (over 2 ozs., the rates for letters or parcels according to weight). *Registered Newspapers*, each 2 cents. *Parcels*, not over 1 lb., 20 cents; 2 lbs., 30 cents; 3 lbs., 40 cents; 5 lbs., 50 cents; 6 lbs., 60 cents; 7 lbs., 70 cents; 8 lbs., 80 cents; 9 lbs., 90 cents; 11 lbs., Re. 1.

Rates to India.—The same as Inland Post, except for *Parcels*—not over 1 lb., 25 cents; each extra lb. to 11 lbs., 15 cents; over 11 lbs. and under 12 lbs., 3 Rs. 25 cents; each extra lb. up to 20 lbs., 25 cents (maximum weight to Maldives 11 lbs.).

Foreign Rates.—*Letters* to the United Kingdom, Aden, and the British Colonies, &c., which have adopted the Imperial Penny Postage (for list see Indian Foreign Postal Rates, page 12), each oz., 6 cents. All other countries, first oz., 15 cents; each add. oz., 9 cents. *Post Cards*, 6 cents; reply, 12 cents. *Printed Papers*, per 2 ozs., 3 cents. *Business Papers* (Legal and Commercial Documents), first 10 ozs., 15 cents; every add. 2 ozs., 3 cents. *Patterns and Samples*, per 4 ozs., 6 cents; every add. 2 ozs., 3 cents.

Registration.—Inland or Foreign, 10 cents.

Telegraph Rates, Inland.—"Ordinary" 25 cents first 10 words; every add. 2 words, 5 cents. **To India** (including Burma) Re. 1 for first 12 words and 10 c. for each add. word.

Parcel Post to United Kingdom.—Charge is first 3 lbs., 75 cents; above 3 lbs. and up to 7 lbs., 1 rupee 50 cents; above 7 lbs. and up to 11 lbs., 2 rupees 25 cents. Limit, 3 ft. 6 ins. in length; length and girth together, 6 ft. Parcels may be despatched by the

SAMVAT CALENDAR, 1916—contd.

Day 1916.	July	August	September	October	November	December
	1913	1913	1913	1913	1913	1913
1	Ashada 1 sudi	2 sudi	4 sudi	4 sudi	6 sudi	7 sudi
2	2	3	5	5	7	8
3	3	4	6	6	8	9
4	4	5	7	8	9	10
5	5	6	8	9	10	11
6	6	7	9	10	12	12
7	7	8	10	11	13	13
8	8	9	11	12	14	14
9	9	11 c	12	13	15	15
10	10	12	14 c	14	1 badi	1 badi
11	11	13	15	15	2	2
12	12	14	1 badi	1 badi	3	3
13	13	15	2	2	4	4
14	14	1 badi	3	3	5	5
15	15	2	4	4	5 D B	6
16	1 badi	3	5	5	6	7
17	3 d c	4	6	6	7	8
18	4	5	7	7	8	8
19	5	6	8	8	9	9
20	6	7	9	9	10	10
21	7	8	10	10	11	11
22	8	9	11	11	12	12
23	9	10	11	12	13	14
24	10	11	12	13	14	15
25	11	12	13	14	15	<i>Pausha</i> 1 sudi
26	12	13	14	15	<i>Marga.</i> 1 sudi	2
27	13	14	15	<i>Karttika</i> 1 sudi	2	3
28	14	15	<i>Asvina</i> 1 sudi	2	3	4
29	15	<i>Bhadra.</i> 1 sudi	2	3	4	5
30	<i>Sravana</i> 1 sudi d c m b	2	3	4	6	6
31	1	3	..	5	..	7

a capital letter signifies that the tithi in the table is to be increased by 1, and a small letter that it is to be diminished by 1, to obtain the tithi at the place indicated by the letter.

CEYLON POSTAL RATES—contd.

quicker route *via* Italy and France on payment of an extra fee of 75 cents per parcel. Parcels containing valuables *must* be insured.

Money Order Rates:—

	Inland.	India.	United Kingdom.
Up to Rs. 10	Rs. c. 0 10	On sums not exc. Rs. 10, 10 cents; exc. Rs. 10, but not exc. Rs. 600, 10 cents for each complete sum of Rs. 10, and 10 cents for the remainder.	For sums not exc. £1, 25 cents; exc. £1, but not exc. £40, 15 cents for each complete sum of £1, and 15 cents for the remainder.

FIXED AND MOVABLE FESTIVALS, &c., 1917.

January—Epiphany (6). *February*—Septuagesima Sunday (4); Quinquagesima—Shrove Sunday (18); Ash Wednesday (21); Quadragesima—First Sunday in Lent (25). *March*—St. David (1); St. Patrick (17); Annunciation—Lady Day (25). *April*—Palm Sunday (1); Good Friday (6); Easter Day (8); Low Sunday (15); St. George (23). *May*—Accession of King George V. (6); Proclamation (9); Rogation Sunday (13); Ascension Day—Holy Thursday (17); Queen Mary's Birthday (26); Whit Sunday (27); *June*—Trinity Sunday (3); King's Birthday (3); Corpus Christi (7); Birthday of Prince of Wales (23); St. John Baptist (24). *September*—St. Michael and All Angels—Michaelmas Day (29). *November*—St. Andrew (30). *December*—Queen Alexandra's Birthday (1); First Sunday in Advent (2); St. Thomas (21); Christmas Day (25).

INDIAN STAMP DUTIES.

	<i>Rs. A.</i>
<i>Acknowledgment of Debt</i> ex. Rs. 20	0 1
<i>Affidavit or Declaration</i>	1 0
<i>Agreement or Memo. of Agreement</i> , (a) if relating to the sale of a bill of exchange	0 2
(b) if relating to sale of a Govern- ment Security, or share in an incorporated company or other body corporate—Subject to a maximum of 10 rupees one anna for every Rs. 10,000 or part.	
(c) if not otherwise provided for	0 8
<i>Appointment in execution of a power</i>	15 0
<i>Articles of Association of Company</i>	25 0
<i>Articles of Clerkship</i>	250 0
<i>Award</i> , any decision in writing by an Arbitrator, other than by an Order of the Court. Where the value does not exceed Rs. 1,000, same duty as a Bond.	
In any other case	5 0
<i>Bill of Exchange or Promissory Note</i> payable on demand	0 1
Where payable otherwise than on demand, but not more than one year after date or sight. Not exc. Rs. 200, a. 3; exc. Rs. 200, not exc. Rs. 400, a. 6; exc. Rs. 400, not exc. Rs. 600, a. 9; exc. Rs. 600, not exc. Rs. 800, a. 12; exc. Rs. 800, not exc. Rs. 1,000, a. 15; exc. Rs. 1,000, not exc. Rs. 1,200, R. 1 a. 2; exc. Rs. 1,200, not exc. Rs. 1,600, R. 1 a. 8; exc. Rs. 1,600, not exc. Rs. 2,500, R. 2 a. 4; exc. Rs. 2,500, not exc. Rs. 5,000, Rs. 4 a. 8; exc. Rs. 5,000, not exc. Rs. 7,500, Rs. 6 a. 12; exc. Rs. 7,500, not exc. Rs. 10,000, Rs. 9; exc. Rs. 10,000, not exc. Rs. 15,000, Rs. 13 a. 8; exc. Rs. 15,000, not exc. Rs. 20,000, Rs. 18; exc. Rs. 20,000, not exc. Rs. 25,000, Rs. 22 a. 8; exc. Rs. 25,000, not exc. Rs. 30,000, Rs. 27; and for every add. Rs. 10,000, or part thereof, in excess of Rs. 30,000, Rs. 9.	
Where payable at more than one year after date or sight, same duty as a Bond.	
<i>Bill of Lading</i>	0 4
<i>Bond</i> (not otherwise provided for)— Not exceeding Rs. 10	0 2
Exc. Rs. 10, but not exc. Rs. 50	0 4
Exc. Rs. 50, but not exc. Rs. 100	0 8
Up to Rs. 1,000 every Rs. 100 ..	0 8
For every Rs. 500 or part, beyond Rs. 1,000	2 8
<i>Bond, Administration, Customs, Security or Mortgage Deed</i> —For amount not exceeding Rs. 1,000, same duty as a Bond.	
In any other case	5 0
<i>Cancellation</i>	5 0
<i>Certificate or other Document</i> re- lating to Shares	0 1
<i>Charter Party</i>	1 0
<i>Cheque</i>	0 1
<i>Composition—Deed</i>	10 0
<i>Conveyance</i> , not being a transfer— Not exceeding Rs. 50	0 8
Exceed. Rs. 50, not exceed. Rs. 100	1 0

INDIAN STAMP DUTIES—con.

For every Rs. 100 in excess of Rs. <i>Rs. A.</i> 100 up to Rs. 1,000	1 0
For every Rs. 500, or part thereof, in excess of Rs. 1,000	5 0
<i>Copy or Extract</i> , if the original was not chargeable with duty, or if duty with which it was charge- able does not exceed 1 Rupee ..	0 8
In any other case	1 0
<i>Counterpart or Duplicate</i> , if the duty with which the original in- strument is chargeable does not exceed one rupee.—The same duty as is payable on the original.	
In any other case	1 0
<i>Delivery Order</i>	0 1
<i>Entry in any High Court of an Ad- vocate or Vakil</i>	500 0
In the case of an Attorney ..	250 0
<i>Instrument—Apprenticeship</i> ..	5 0
Divorce	1 0
Other than Will, recording an adoption or conferring or pur- porting to confer Authority to adopt	10 0
<i>Lease</i> —Where rent is fixed and no premium is paid, for less than 1 year, same duty as Bond for whole amount; not more than 3 years, same as Bond for average annual rent reserved; over 3 years, same as Conveyance for consideration equal to amount or value of the average annual rent reserved; for indefinite term, same as Convey- ance for amount equal to 10 years' rent; in perpetuity, same as Con- veyance for consideration equal to one-fifth of rents paid in respect of first 50 years. Where there is premium and no rent, same as Conveyance for amount of pre- mium; premium with rent, same as Conveyance for amount of pre- mium, and same duty as Lease without premium.	
<i>Letter—Allotment of Shares</i> ..	0 1
„ Credit	0 1
„ License	10 0
<i>Memo. of Association of Company</i> , if accompanied by Articles of Association	15 0
If not so accompanied	40 0
<i>Notarial Act</i>	1 0
<i>Note or Memo. intimating the pur- chase or sale</i> — (a) Of any goods exceeding in value Rs. 20	0 2
(b) Of any stock or marketable security exceeding in value Rs. 20—Subject to a maximum of 10 rupees, one anna for every Rs. 10,000, or part.	
<i>Note of Protest by a Ship's Master</i>	0 8
<i>Partnership</i> —Where the capital does not exceed Rs. 500	2 8
In any other case	10 0
Dissolution of	5 0
<i>Policy of Insurance</i> — (1.) <i>Sea</i> —Where premium does not exceed rate of 2 a., or $\frac{1}{2}$ per cent. of amount insured	0 1
In any other case for Rs. 1,000 or part thereof	0 2

INDIAN STAMP DUTIES—

	<i>Rs. A.</i>
(2.) <i>For time</i> —For every Rs. 1,000 or part insured, not exc. 6 months	0 2
Exc. 6 and not exc. 12 months	0 4
If drawn in duplicate, for each part:—Half the above rates, for Sea and Time.	
(3.) <i>Fire</i> —When the sum insured does not exceed Rs. 5,000	0 8
In any other case	1 0
(4.) <i>Accident and Sickness</i> —Against railway accident, valid for a single journey only	0 1
In any other case—For the maximum amount which may become payable in the case of any single accident or sickness where such amount does not exc. Rs. 1,000, and also where amount exc. Rs. 1,000 for every Rs. 1,000 or part	0 2
(5.) <i>Life, or other Insurance, not specifically provided for</i> , per Rs. 1,000	0 6
In case of a re-insurance by one Company with another— $\frac{1}{4}$ of duty payable in respect of the original insurance, but not less than 1 a., or more than 1 R.	
<i>Power of Attorney</i> —For the sole purpose of procuring the registration of one or more documents in relation to a single transaction or for admitting execution of one or more such documents	0 8
Authorising 1 person or more to act in a single transaction other than that mentioned above	1 0
Authorising not more than 5 persons to act jointly and severally in more than 1 transaction, or generally	5 0
Authorising more than 5 but not more than 10 persons to act	10 0
When given for consideration and authorising the Attorney to sell any immovable property—The same duty as a <i>Conveyance</i> for the amount of the consideration.	
In any other case, for each person authorised	1 0
<i>Protest of Bill or Note</i>	1 0
<i>Proxy</i>	0 1
<i>Receipt for value exc. Rs. 20</i>	0 1
<i>Shipping Order</i>	0 1
<i>Surrender of Lease</i> —When duty with which Lease is chargeable does not exceed Rs. 5:—The duty with which such Lease is chargeable. In any other case	5 0
<i>Transfer of Shares</i> —One Half of the duty payable on a <i>Conveyance</i> for a consideration equal to the value of the share.	
<i>Transfer of any Interest secured by a Bond, Mortgage-deed, or Policy of Insurance</i> —If duty on such does not exceed Rs. 5—The duty with which such Bond, &c., is chargeable. In any other case	5 0
<i>Transfer of Lease</i> by way of assignment and not by way of under-lease—The same duty as a conveyance for a consideration equal to	

INDIAN STAMP DUTIES—

	<i>Rs. A.</i>
the amount of the consideration for the transfer.	
<i>Trust, Declaration of</i> —Same duty as a Bond for a sum equal to the amount or value of the property concerned, but not exceeding	15 0
Revocation of—Ditto, but not exceeding	10 0
<i>Warrant for Goods</i>	0 4

WEIGHTS & MEASURES.

<i>Liquid Measure.</i>	
60 Minims = 1 Drm.	1 Minim = 1 Drop
8 Drms. = 1 Ounce	1 Drachm = 1 T'spnfl.
20 Ounces = 1 Pint	2 " = 1 Dsrt. "
8 Pints = 1 Gallon	4 " = 1 Table, "
1 Gall. Pure Water at 62° Fah.	
Bar. at 30 = 10 lbs.	
4 Gills = 1 Pint	= 34.66 cubic inches
2 Pints = 1 Quart	= 69.318 "
4 Qts. = 1 Gallon	= 277.274 "
<i>Beer, &c., Measure.</i>	
0 Gals. = 1 Firkin	54 Galls. = 1 Hoghd.
18 " = 1 Kildrkn.	108 " = 1 Butt
36 " = 1 Barrel	216 " = 1 Tun
<i>Dry Measure.</i>	
4 Qts. = 1 Gall.	4 Bush. = 1 Cmb.
2 Galls. = 1 Peck	or Sack
4 Pecks = 1 Bush.	8 Bush. = 1 Qtrr.
2 Bush. = 1 Strike	5 Qtrrs. = 1 Load
10 Quarters = 1 Last	
<i>Measure of Surface.</i>	
144 Square Inches = 1 Square Foot	
9 Square Feet = 1 Square Yard	
30½ Square Yards = 1 Rod, Pole or Perch	
16 Poles = 1 Chain	
40 Square Poles = 1 Rood, 1210 yards	
4 Roods or 10 Sq. Chains = 1 Acre, 4840 yards	
640 Square Acres = 1 Square Mile	
<i>Avoirdupois Weight.</i>	
27½ Grains = 1 Drachm	
16 Drachms = 1 Ounce = 437½ grains	
16 Ounces = 1 Pound (lb.) = 7000 "	
14 Pounds = 1 Stone	
28 Pounds = 1 Quarter (qr.)	
8 Stones = 1 Hundredweight (cwt.)	
20 Cwts. = 1 Ton	
A Cental = 100 lbs.	
1 Cwt. = 1 Small Sack	} Coal
2 Cwts. = 1 Dble "	
20 Cwts. or 10 Dble. Sacks = 1 Ton	} Wgts.
3 Bushls. of Coke = 1 Sack	
12 Sacks = 1 Chaldron	
21 Chaldrons = 1 Score	
<i>Troy Weight.</i>	
3'17 Grains = 1 Carat	
24 Grains = 1 Pennywt. = 24 grs.	
20 Pennywts. = 1 Ounce = 480 "	
12 Ounces = 1 Pound = 5760 "	
Standard Gold consists of 22 parts of pure gold alloyed with 2 parts of copper or other metal, and according to the quantity of alloy is called 6, 12, 15 or 18 carat <i>i.e.</i> , that quantity of pure gold out of the 24.	
<i>Measure of Length.</i>	
12 Lines = 1 Inch	4 Poles = 1 Chain
12 Inchs. = 1 Foot	40 Poles = 1 Furl.
18 Inchs. = 1 Cubit	8 Furl. = 1 Mile
3 Feet = 1 Yard	3 Miles = 1 Leag.
6 Feet = 1 Fthm.	60 Naut. Miles = 1 Degree
5½ Yds. = 1 Rod, Pole or Perch	69½ Geogr. Miles = 1 Degree

INDIAN INLAND POSTAGE RATES.

Post Cards.—Single, $\frac{1}{2}$ anna; reply, $\frac{1}{2}$ anna.

Letters.—Not exc. 1 tola, $\frac{1}{2}$ anna; exc. 1 tola but not exc. 10 tolas, 1 anna; for every add. 10 tolas or fraction, 1 anna.

Book Packets, Publications of all kinds, Newspapers and Patterns.—For every 10 tolas or part of that weight, $\frac{1}{2}$ anna.

Registered Newspapers.—Not exc. 8 tolas, $\frac{1}{2}$ anna; exc. 8 tolas but not exc. 40 tolas, $\frac{1}{2}$ anna; for every add. 40 tolas or part, $\frac{1}{2}$ anna. (Prepayment compulsory.)

Parcels.—Not exc. 440 tolas, for every 40 tolas or part of that weight, 2 annas; exc. 440 tolas but not exc. 480 tolas, 3 rupees; for every add. 40 tolas or fraction up to 800 tolas, 4 annas. Parcels weighing more than 440 tolas and not more than 800 tolas, limit of weight, *must* be registered. (Prepayment compulsory.)

Commission on Ordinary Inland Money Orders.—On any sum not exc. 5 rupees, 1 anna; exc. 5 rupees but not exc. 10 rupees, 2 annas; exc. 10 rupees but not exc. 15 rupees, 3 annas; exc. 15 rupees, but not exc. 25 rupees, 4 annas; exc. 25 rupees, up to 600 rupees, 4 annas for each complete sum of 25 rupees and 4 annas for the remainder, provided that, if the remainder does not exc. 5 rupees, the charge for it shall be only 1 anna; if it does not exceed 10 rupees, the charge for it shall be only 2 annas; and if it does not exc. 15 rupees, the charge for it shall be only 3 annas.

Telegraphic Money Orders, Inland.—A fee for the issue of a telegraphic money order will be charged at the rate of commission on an ordinary inland money order for the same amount, added to a telegraph charge calculated at the rates for inland telegrams for the actual number of words used in the telegram advising the remittance, according as the telegram is to be sent as an "Express" or as an "Ordinary" message. The amount for which a single telegraphic money order may be issued must not exceed Rs. 600, and must not include fractions of a rupee.

Money Orders expressed in rupees may be drawn on the following Native States:—Chamba, Gwalior, Jhind, Nabha and Patiala; limit of value, 600 rupees. Inland rates of commission apply to these orders.

Telegraphic Money Orders expressed in rupees may be exchanged with Ceylon. Limit of value is 600 rupees. Fraction of a rupee not included.

Registration Fee.—For each letter, post card, book or pattern packet, or parcel, to be registered, 2 annas.

Acknowledgment Fee.—For each article registered, 1 anna.

Insurance.—Registered letters, value-payable registered letters, registered parcels, and value-payable registered parcels may be insured up to the value of 600 Rs. in branch offices, and up to 2,000 Rs. in other offices; when the value insured does not exceed 50 rupees, 1 anna; for every additional 50 rupees or fraction, 1 anna.

Value-Payable Fees.—Amount specified for remittance to sender—The same rates of fees as for Ordinary Inland Money Orders.

FOREIGN POSTAGE RATES.

Post Cards.—Single, 1 anna; reply, 2 annas. **Printed Papers** (including newspapers and books).—Each packet, per 2 ozs., $\frac{1}{2}$ anna. **Business Papers** (Legal and Commercial Documents).—Each packet, not exc. 10 ozs., 2½ annas; per 2 ozs. add., $\frac{1}{2}$ anna. **Samples.**—Each packet, not exc. 4 ozs., 1 anna; per 2 ozs. add., up to 12 ozs. (United Kingdom, 5 lbs.), $\frac{1}{2}$ anna.

The postage on **Letters** for the United Kingdom, Egypt (including the Soudan), and the British Possessions in the following list is 1 anna for each oz. or part of that weight.—Ascension, Australia, Bahamas, Barbados, Basutoland, Bechuanaland Protect., Bermuda, Brit. East Africa and Uganda, British Guiana, British Honduras, British North Borneo, Canada, Cape of Good Hope, Cayman Islands, Cyprus, Falkland Islands, Fiji, Gambia, Gibraltar, Gold Coast, Hongkong (with agencies at Shanghai, Liu Kung Tau, Hankow, Ningpo, Foochow, Amoy, Swatow, Tientsin, Canton, Chefoo and Hoihow), Jamaica, New Hebrides, Leeward Islands (viz.: Antigua, Dominica, Montserrat, Nevis, St. Kitts and Tortola), Malta, Mauritius, Morocco (British Post Office Agencies), Natal, Newfoundland, New Zealand [including Cook or Hervey Islands, Suvarrow Islands, Fanning Island, and the Islands of Palmerston (Avarua), Savage (Niue), Danger (Pukapuka), Rakaanga, Manahiki, and Penrhyn (Tongareva)], Nigeria (Northern), Nigeria (Southern), Nyasaland Protect., Orange Free State, Papua (British New Guinea), Rhodesia, Federated Malay States of Negri-Sembilan, Pahang, Perak and Selangor; Sarawak, St. Helena, Seychelles, Sierra Leone, Somaliland (British), Straits Settlements, Tobago, Transvaal, Trinidad, Turks Islands, Uganda, Windward Islands (viz.: Grenada, St. Lucia and St. Vincent), Zanzibar. **All other countries**, 2½ annas for the first ounce, and 1½ annas for every add. ounce or part of that weight.

Note.—Indian Inland rates are, however, charged to Ceylon and Portuguese India.

Foreign Parcel Post.—Parcels can be sent to most parts of the world. Particulars will be found in the Indian Postal Guide. Parcels must be securely fastened, and must be accompanied by a Customs Declaration, obtainable free, stating its contents and value. Parcels for United Kingdom are divided into two classes. (1) Not exc. 11 lbs. in weight, which are sent as mails to the British Post Office, and (2) exc. 11 lbs. but not exc. 50 lbs., which are forwarded by the P. & O. Company. (39 tolas = 1 lb. for foreign parcels.)

TABLE OF EXCHANGE, No. 1—RUPEES INTO POUNDS STERLING.

For values of Rupees from 1s. 3½d. to 1s. 4½d.

Rupees.	1s. 3½d.	1s. 3¼d.	1s. 3⅓d.	1s. 4d.	1s. 4½d.	1s. 4¼d.
1	£ s. d.	£ s. d.	£ s. d.	£ s. d.	£ s. d.	£ s. d.
3	0 1 3½	0 1 3¼	0 1 3⅓	0 1 4	0 1 4	0 1 4
5	0 3 11½	0 3 11¼	0 3 11⅓	0 4 0	0 4 0	0 4 0
10	0 6 7½	0 6 7¼	0 6 7⅓	0 6 8	0 6 8	0 6 8½
20	0 13 2½	0 13 2¼	0 13 2⅓	0 13 4	0 13 4½	0 13 4½
30	1 6 5½	1 6 5¼	1 6 5⅓	1 6 8	1 6 8½	1 6 9½
40	1 19 8½	1 19 8¼	1 19 8⅓	2 0 0	2 0 0½	2 0 1½
50	2 12 11	2 13 1½	2 13 2½	2 13 4	2 13 5½	2 12 6½
60	3 6 1½	3 6 4½	3 6 6½	3 6 8	3 6 9½	3 6 11
70	3 19 4½	3 19 8½	3 19 10	4 0 0	4 0 1½	4 0 3½
80	4 12 7½	4 12 11½	4 13 1½	4 13 4	4 13 6	4 13 8½
90	5 5 10	5 6 3	5 6 5½	5 6 8	5 6 10½	5 7 1
100	5 19 0½	5 19 6½	5 19 9	6 0 0	6 0 2½	6 0 5½
250	6 12	6 12 9½	6 13 0½	6 13 4	6 13 7	6 13 10½
400	16 10	16 12 0½	16 12 8	16 13 4	16 13 11½	16 14 7½
500	26 9 2	26 11 3	26 12 3½	26 13 4	26 14 4½	26 15 5
750	33 1 5½	33 4 0½	33 5 4½	33 6 8	33 7 11½	33 9 3½
1,000	49 12 2½	49 16 1	49 18 0½	50 0 0	50 1 11½	50 3 10½
	66 2 11	66 8 1½	66 10 8½	66 13 4	66 15 11½	66 18 6½

For values of Rupees from 1s. 4½d. to 1s. 4¼d.

Rupees.	1s. 4½d.	1s. 4¼d.	1s. 4⅓d.	1s. 4⅔d.	1s. 4½d.	1s. 4¼d.
1	£ s. d.	£ s. d.	£ s. d.	£ s. d.	£ s. d.	£ s. d.
3	0 1 4	0 1 4	0 1 4	0 1 4	0 1 4	0 1 4½
5	0 4 0½	0 4 0½	0 4 0½	0 4 0½	0 4 0½	0 4 0½
10	0 6 8½	0 6 8½	0 6 8½	0 6 8½	0 6 9	0 6 9½
20	0 13 4	0 13 5½	0 13 5½	0 13 5½	0 13 6	0 13 6½
30	1 6 9½	1 6 10½	1 6 11	1 6 11½	1 7 0½	1 7 1
40	2 0 2½	2 0 3½	2 0 4½	2 0 5½	2 0 6½	2 0 7½
50	2 13 7½	2 13 9	2 13 10½	2 13 11½	2 14 0½	2 14 2
60	3 7 0½	3 7 2½	3 7 3½	3 7 5½	3 7 6½	3 7 8½
70	4 0 5½	4 0 7½	4 0 9½	4 0 11½	4 1 1	4 1 3
80	4 13 10½	4 14 0½	4 14 2½	4 14 5	4 14 7½	4 14 9½
90	5 7 3½	5 7 6	5 7 8½	5 7 11	5 8 1½	5 8 4
100	6 0 8½	6 0 11½	6 1 2	6 1 4½	6 1 7½	6 1 10½
250	6 14 1½	6 14 4½	6 14 7½	6 14 10½	6 15 1½	6 15 5
400	16 15 3½	16 15 11½	16 16 7	16 17 2½	16 17 10½	16 18 6½
500	26 16 5½	26 17 6	26 18 6½	26 19 7	27 0 7½	27 1 8
750	33 10 6½	33 11 10½	33 13 2	33 14 5½	33 15 9½	33 17 1
1,000	50 5 10	50 7 9½	50 9 9	50 11 8½	50 13 7½	50 15 7½
	67 1 1½	67 3 9	67 6 4½	67 8 11½	67 11 6½	67 14 2

TABLE OF EXCHANGE, No. 2—POUNDS STERLING INTO RUPEES.

For values of Rupees from 1s. 3½d. to 1s. 4¼d.

Sterling.	at 1s. 3½d.	at 1s. 3¼d.	at 1s. 3⅓d.	at 1s. 4d.	at 1s. 4½d.	at 1s. 4¼d.
£ s. d.	Rs. A. P.	Rs. A. P.	Rs. A. P.	Rs. A. P.	Rs. A. P.	Rs. A. P.
0 0 1	0 1 0	0 1 0	0 1 0	0 1 0	0 0 11	0 0 11
0 0 4	0 4 0	0 4 0	0 4 0	0 4 0	0 3 11	0 3 11
0 0 6	0 6 0	0 6 0	0 6 0	0 6 0	0 5 11	0 5 11
0 0 9	0 9 0	0 9 0	0 9 0	0 9 0	0 8 11	0 8 11
0 1 0	0 12 1	0 12 0	0 12 0	0 12 0	0 11 11	0 11 11
0 2 6	1 14 2	1 14 1	1 14 0	1 14 0	1 13 10	1 13 9
0 5 0	3 12 5	3 12 2	3 12 1	3 12 0	3 11 10	3 11 9
0 7 6	5 10 7	5 10 3	5 10 1	5 10 0	5 9 9	5 9 7
0 10 0	7 8 11	7 8 5	7 8 2	7 8 0	7 7 9	7 7 6
1 0 0	15 1 10	15 0 11	15 0 5	15 0 0	14 15 6	14 15 0
5 0 0	75 9 5	75 4 8	75 2 4	75 0 0	74 13 7	74 11 3
10 0 0	151 2 10	150 9 4	150 4 8	150 0 0	149 11 3	149 6 7
25 0 0	377 15 2	376 7 5	375 11 8	375 0 0	374 4 2	373 8 6
30 0 0	453 8 8	451 12 2	450 14 1	450 0 0	449 1 11	448 3 11
50 0 0	755 14 5	752 15 0	751 7 5	750 0 0	748 8 7	747 1 3
75 0 0	1,133 13 8	1,129 6 6	1,127 3 2	1,125 0 0	1,122 12 10	1,120 9 10
100 0 0	1,511 12 11	1,505 14 1	1,502 14 11	1,500 0 0	1,497 1 2	1,494 2 7

**TABLE OF EXCHANGE, No. 2—POUNDS STERLING
INTO RUPEES—contd.**

For values of Rupees from 1s. 4 $\frac{3}{4}$ d. to 1s. 4 $\frac{1}{4}$ d.

Sterling.	at 1s. 4 $\frac{3}{4}$ d.	at 1s. 4 $\frac{1}{4}$ d.	at 1s. 4 $\frac{3}{4}$ d.	at 1s. 4 $\frac{1}{4}$ d.	at 1s. 4 $\frac{3}{4}$ d.	at 1s. 4 $\frac{1}{4}$ d.
£ s. d.	Rs. A. P.	Rs. A. P.	Rs. A. P.	Rs. A. P.	Rs. A. P.	Rs. A. P.
0 0 1	0 0 11	0 0 11	0 0 11	0 0 11	0 0 11	0 0 11
0 0 4	0 3 11	0 3 11	0 3 11	0 3 11	0 3 11	0 3 11
0 0 6	0 5 11	0 5 11	0 5 11	0 5 11	0 5 11	0 5 10
0 0 9	0 8 11	0 8 11	0 8 10	0 8 10	0 8 10	0 8 10
0 1 0	0 11 11	0 11 10	0 11 10	0 11 10	0 11 10	0 11 9
0 2 6	1 13 9	1 13 8	1 13 8	1 13 7	1 13 7	1 13 5
0 5 0	3 11 7	3 11 6	3 11 5	3 11 3	3 11 2	3 11 0
0 7 6	5 9 5	5 9 3	5 9 1	5 8 11	5 8 9	5 8 6
0 10 0	7 7 3	7 7 0	7 6 10	7 6 7	7 6 4	7 6 1
1 0 0	14 14 7	14 14 1	14 13 8	14 13 2	14 12 9	14 12 3
5 0 0	74 9 0	74 6 8	74 4 4	74 2 1	73 15 9	73 13 6
10 0 0	149 2 0	148 13 4	148 8 9	148 4 2	147 15 7	147 11 0
25 0 0	372 13 0	372 1 5	371 5 10	370 10 5	369 15 0	369 3 7
30 0 0	447 6 0	446 8 2	445 10 4	444 12 7	443 14 10	443 1 2
50 0 0	745 10 1	744 2 11	742 11 11	741 5 0	739 14 1	738 7 4
75 0 0	1,118 7 1	1,116 4 5	1,114 1 10	1,111 15 5	1,109 13 1	1,107 11 0
100 0 0	1,491 4 2	1,488 5 11	1,485 7 10	1,482 10 0	1,479 12 3	1,476 14 9

RATES OF POSTAGE, &c., IN HONGKONG.

To	Letters.		Post Cards, each.	Books, Commer- cial Papers,* Newspapers, †† Samples,* per 2 ozs.	Regis- tration.
	not exc. 1 oz.	each add. oz.			
UNION COUNTRIES (except as below)	Cents.	Cents.	Cents.	Cents.	Cents.
To the United Kingdom, India, Ceylon, Aden, and British Posses- sions and Protectorates (for list see page 12) which have adopted the Imperial Penny Postage.	10	6	4	2 ††	10
Liukungtau and British Post Offices at Shanghai, Ningpo, Hankow, Swatow, Amoy, Foochow, Hoi- how, Chefoo and Tientsin ...	4 **	4 **	4	2 ††	10
Canton (Brit. Agency) and Macao	2 (½ oz.) **	—	1	2 ††	10
Canton (including Chinese Post Offices at Fatsshan, Chan Chuen and Whampon)	2 (½ oz.) **	—	1	2 ††	10
China (Chinese Post Offices) ..	4 (½ oz.) **	—	1	2 ††	10
NON-UNION COUNTRIES:—					
Afghanistan	4 § †	4	—	2	—
Arabia (Hejaz and Yamen) ..	10 §	6	4	2	10
Friendly Islands (Tonga Islands)	4	4	4	2	10
Morocco (with a few exceptions)..	10 §	6	4	2	none
Solomon Islands	10 §	6	4	2	none
Nyasaland Protect. & Rhodesia (N.)	4	4	4	2	10
LOCAL DELIVERY	2	2	1	2 ††	10

* For Commercial Papers, lowest charge is 10 cents. For Samples, lowest charge is 4 cents. § Prepayment is compulsory. † An additional charge is made on delivery. †† Single Newspapers, 2 cents per 4 ozs., or fraction, to Australia, Canada, China, Ceylon, Corea, Formosa, India, Japan, Macao, Netherlands India, New Zealand, Philippines, Siam, Straits Settlements, Timor and United Kingdom. ** For Chinese Postal Hong packets, the rate is 4 cents per ½ oz.

Parcel Post.—Hongkong (Local Delivery), not exceeding 3 lbs., 10 cents; 7 lbs., 20 cents; 11 lbs., 30 cents. Hongkong to and from Postal Agencies in China, not exceeding 3 lbs., 25 cents; 7 lbs., 50 cents; 11 lbs., 75 cents. To Japan, Formosa, and Corea, not exceeding 3 lbs., 60 cents; 7 lbs., 1 \$ 10 cents; 11 lbs., 1 \$ 60 cents. To United Kingdom and India, not exceeding 3 lbs., 60 cents; 7 lbs., 1 \$ 20 cents; 11 lbs., 1 \$ 80 cents. To United Kingdom overland *via* Brindisi—not exceeding 3 lbs., 1 \$ 20 cents; 7 lbs., 1 \$ 80 cents; 11 lbs., 2 \$ 40 cents. Other countries, various Rates. Limits of size, greatest length, 3 ft. 6 in.; greatest length and girth combined, 6 ft.

TABLE OF WAGES, INCOME, &c.

Showing the amount for one or more days at the rates of 1 to 16 Rupees per Month of 31 Days.

Rupees	1	2	3	4	5	6	7	8	9	10	11	12	13	14	15	16
1	0 0 6	0 0 6	0 0 6	0 0 6	0 0 6	0 0 6	0 0 6	0 0 6	0 0 6	0 0 6	0 0 6	0 0 6	0 0 6	0 0 6	0 0 6	0 0 6
2	0 0 12	0 0 12	0 0 12	0 0 12	0 0 12	0 0 12	0 0 12	0 0 12	0 0 12	0 0 12	0 0 12	0 0 12	0 0 12	0 0 12	0 0 12	0 0 12
3	0 0 18	0 0 18	0 0 18	0 0 18	0 0 18	0 0 18	0 0 18	0 0 18	0 0 18	0 0 18	0 0 18	0 0 18	0 0 18	0 0 18	0 0 18	0 0 18
4	0 0 24	0 0 24	0 0 24	0 0 24	0 0 24	0 0 24	0 0 24	0 0 24	0 0 24	0 0 24	0 0 24	0 0 24	0 0 24	0 0 24	0 0 24	0 0 24
5	0 0 30	0 0 30	0 0 30	0 0 30	0 0 30	0 0 30	0 0 30	0 0 30	0 0 30	0 0 30	0 0 30	0 0 30	0 0 30	0 0 30	0 0 30	0 0 30
6	0 0 36	0 0 36	0 0 36	0 0 36	0 0 36	0 0 36	0 0 36	0 0 36	0 0 36	0 0 36	0 0 36	0 0 36	0 0 36	0 0 36	0 0 36	0 0 36
7	0 0 42	0 0 42	0 0 42	0 0 42	0 0 42	0 0 42	0 0 42	0 0 42	0 0 42	0 0 42	0 0 42	0 0 42	0 0 42	0 0 42	0 0 42	0 0 42
8	0 0 48	0 0 48	0 0 48	0 0 48	0 0 48	0 0 48	0 0 48	0 0 48	0 0 48	0 0 48	0 0 48	0 0 48	0 0 48	0 0 48	0 0 48	0 0 48
9	0 0 54	0 0 54	0 0 54	0 0 54	0 0 54	0 0 54	0 0 54	0 0 54	0 0 54	0 0 54	0 0 54	0 0 54	0 0 54	0 0 54	0 0 54	0 0 54
10	0 0 60	0 0 60	0 0 60	0 0 60	0 0 60	0 0 60	0 0 60	0 0 60	0 0 60	0 0 60	0 0 60	0 0 60	0 0 60	0 0 60	0 0 60	0 0 60
11	0 0 66	0 0 66	0 0 66	0 0 66	0 0 66	0 0 66	0 0 66	0 0 66	0 0 66	0 0 66	0 0 66	0 0 66	0 0 66	0 0 66	0 0 66	0 0 66
12	0 0 72	0 0 72	0 0 72	0 0 72	0 0 72	0 0 72	0 0 72	0 0 72	0 0 72	0 0 72	0 0 72	0 0 72	0 0 72	0 0 72	0 0 72	0 0 72
13	0 0 78	0 0 78	0 0 78	0 0 78	0 0 78	0 0 78	0 0 78	0 0 78	0 0 78	0 0 78	0 0 78	0 0 78	0 0 78	0 0 78	0 0 78	0 0 78
14	0 0 84	0 0 84	0 0 84	0 0 84	0 0 84	0 0 84	0 0 84	0 0 84	0 0 84	0 0 84	0 0 84	0 0 84	0 0 84	0 0 84	0 0 84	0 0 84
15	0 0 90	0 0 90	0 0 90	0 0 90	0 0 90	0 0 90	0 0 90	0 0 90	0 0 90	0 0 90	0 0 90	0 0 90	0 0 90	0 0 90	0 0 90	0 0 90
16	0 0 96	0 0 96	0 0 96	0 0 96	0 0 96	0 0 96	0 0 96	0 0 96	0 0 96	0 0 96	0 0 96	0 0 96	0 0 96	0 0 96	0 0 96	0 0 96

LESSONS FOR SUNDAYS, &c., FOR 1916.

Day of Month.	Sundays, &c.	Morning Prayer.		Evening Prayer.	
		First.	Second.	First.	Second.
JAN.	1 <i>Circum.</i>	Genesis 17 v. 9	Romans 2 v. 17	Deuteronomy 10 v. 12	Coloss. 2 v. 8 to v. 18
"	2 aft. Chris.	Isaiah 42	Matthew 1 v. 18	Isaiah 41 or 44	Acts 1
"	6 <i>Epiphany</i>	—60	Luke 3 v. 15 to v. 23	—49 v. 13 to v. 24	John 2 to v. 12
"	9 1 af. Epiph.	—51	Matthew 5 v. 33	—52 v. 13 and 53 or 54	Acts 5 v. 17
"	16 2—	—55	—9 v. 18 [53]	—57 or 61	—9 v. 23
"	23 3—	—62	—13 v. 24 to v.	—65 or 66	—14
"	30 4—	Job 27	—16 v. 24 to 17 v. 14	Job 28 or 29	—18 to v. 24
FEB.	6 5—	Proverbs 1	—21 to v. 23	Proverbs 3 or 8	—21 v. 37 to 22 v. 23
"	13 6—	—9	—24 v. 29	—11 or 15	—27 v. 18
"	20 Septuages.	Gen. 1 & 2 to v. 4	Rev. 21 to v. 9	Genesis 2 v. 4 or Job 38	Revelation 21 v. 9 to 22 v. 5
"	27 Sexages.	—3	Mark 3 v. 13	—6 or 8	Romans 9 v. 19 [v. 5]
MAR.	5 Quinquages	—9 to v. 20	—6 v. 30	—12 or 13	—14 and 15 to v. 8
"	8 <i>Ash Wed.</i>	Isaiah 58 to v. 13	—2 v. 13 to v. 23	Jonah 3	Hebrews 12 v. 3 to v. 13
"	12 1 in Lent	Genesis 19 v. 12 to v. 30	—10 v. 32 [53]	Genesis 22 to v. 20 or 23	1 Corinthians 4 v. 18 & 5
"	19 2—	—27 to v. 41	—14 v. 27 to v.	—25 or 32	—11 v. 2 to v. 17
"	20 3—	—37	Luke 2 to v. 21	—30 or 40	—15 v. 35
APRIL	2 4—	—42	—6 to v. 20	—43 or 45	2 Corinthians 6 and 7 v. 1
"	9 5—	Exodus 3	—9 v. 28 to v. 51	Exodus 5 or 6 to v. 14	—12 v. 14 and 13
"	16 Palm Sun.	—9	Matthew 26	—10 or 11	Luke 19 v. 28 or 20 v. 9 to v. 21
"	21 <i>Good Fri.</i>	Genesis 22 to v. 20	John 18	Isaiah 52 v. 13 and 53	1 Peter 2
"	23 <i>Easter Day</i>	Exodus 12 to v. 20	Revelation 1 v. 10 to v. 19	Exodus 12 v. 29 or 14	John 20 v. 11 to v. 19 or Rev. 5
"	30 Low Sun.	Numbers 16 to v. 36	1 Cor. 15 to v. 29	Numbers 16 v. 36 or 17 to v. 12	—20 v. 24 to v. 30
MAY	7 2 aft. Easter	—20 to v. 14	Luke 23 v. 50 to 24 v. 13	—20 v. 14 to 21 v. 10 or 21 v. 10	1 Thessalonians 4
"	14 3—	—22	John 4 to v. 31	—23 or 24	1 Timothy 3
"	21 4—	Deuteronomy 4 to v. 23	—7 to v. 25	Deuteronomy 4 v. 23 to v. 41 or 5	2 Timothy 4
"	28 Rogation S.	—6 [v. 15]	—11 to v. 17	—9 or 10	Hebrews 3 v. 7 to 4 v. 14
JUNE	1 <i>Ascen. Day</i>	Daniel 7 v. 9 to Deuteronomy 30	Luke 24 v. 44	2 Kings 2 to v. 16	—4
"	4 S. af. Ascen	—10 to v. 18	John 15	Deut. 34 or Joshua 1	—10 v. 19
"	11 Whit Sun.	—10 to v. 18	Romans 8 to v. 18	Isaiah 11 or Ezekiel 30 v. 25	Galatians 5 v. 16 or Acts 18 v. 24 to 19 v. 21
"	18 Trin. Sun.	Isaiah 6 to v. 11	Rev. 1 to v. 9	Genesis 18 or 1 and 2 to v. 4	Ephesians 4 to v. 17 or Matthew 3
"	25 1 af. Trin.	Joshua 3 v. 7 to 4 v. 15	Acts 7 to v. 35	Joshua 5 v. 13 to 6 v. 21 or 24	1 John 1
JULY	2 2—	Judges 4	—10 to v. 24	Judges 5 or 6 v. 11	—5
"	9 3—	1 Samuel 2 to v.	—15 to v. 30	1 Samuel 7 or 4 to v. 19	Matthew 4 to v. 23
"	16 4—	—12 [27]	—19 v. 21	—13 or Ruth 1	—8 to v. 18
"	23 5—	—15 to v. 24	—23 v. 12	—10 or 17	—12 to v. 22
"	30 6—	2 Samuel 1	—28 v. 17	2 Samuel 12 to v. 24 or 18	—15 v. 21
AUG.	6 7—	1 Chronicles 21	Romans 6	1 Chron. 22 or 28 to v. 21	—19 v. 27 to 20 v. 17
"	13 8—	—29 v. 9 to v. 29	—11 to v. 25	2 Chron. 1 or 1 Kings 3	—27 v. 13
"	20 9—	1 Kings 10 to v. 25	1 Corinthians 1 to v. 26	1 Kings 11 to v. 13 or 11 v. 20	—26 v. 57
"	27 10—	—12	—7 v. 25	—13 or 17	Mark 2 to v. 23
SEPT.	3 11—	—18	—12 v. 28 & 13	—19 or 21	—6 v. 14 to v. 30
"	10 12—	—22 to v. 41	2 Corinthians 1 v. 23 to 2 v. 14	2 Kings 2 to v. 16 or 4 v. 8 to v. 38	—10 to v. 32
"	17 13—	2 Kings 5	—0	—6 to v. 24 or 7	—14 to v. 27
"	24 14—	—9	Galatians 3	—10 to v. 32 or 13	Luke 1 v. 57
OCT.	1 15—	—18	Ephesians 2	—19 or 22 to v. 31	—5 to v. 17
"	8 16—	2 Chronicles 36	Philippians 2	Neh. 1 and 2 to v. 9 or 6	—8 v. 26
"	15 17—	Jeremiah 5	Colossians 3 v. 18 and 4	Jeremiah 22 or 35	—12 to v. 35
"	22 18—	—36	2 Thessalonians	Ezekiel 2 or 13 to v. 17	—16
"	29 19—	Ezekiel 14	1 Timothy 6	—18 or 24 v. 15	—20 to v. 27
NOV.	5 20—	—34	Titus 2	—37 or Daniel 1	—23 to v. 26
"	12 21—	Daniel 3	Hebrews 6	Daniel 4 or 5	John 3 to v. 22
"	19 22—	—6	—11 v. 17	—7 v. 9 or 12	—6 v. 22 to v. 41
"	26 23—	Ecclesiastes 11 and 12	James 5	Haggai 2 to v. 10 or Malachi 3 and 4	—9 v. 39 to 10 v. 21
DEC.	3 1 in Advent	Isaiah 1	1 Peter 5	Isaiah 2 or 4 v. 2	—13 to v. 21
"	10 2—	—5	1 John 3 to v. 16	—11 to v. 11 or 24	—18 to v. 28
"	17 3—	—25	Revelation 1	—26 or 28 v. 5 to v. 19	Revelation 2 to v. 18
"	24 4—	—30 to v. 27	—14	—32 or 33 v. 2 to v. 23	—15
"	25 <i>Christ. Day</i>	—9 to v. 8	Luke 2 to v. 15	—7 v. 10 to v. 17	Titus 2 v. 4 to v. 9
"	31 1 aft. Chrst.	—35	Revelation 21 v. 15 to 22 v. 6	—38 or 40	Revelation 22 v. 6

NOTE.—When a Saint's Day falls on a Sunday, the Lessons for both Sunday and Saint's Day are given, those for the Saint's Day being in Italics.

THE BRITISH EMPIRE.
COLONIAL GOVERNORS.

AUSTRALASIAN.

GOVERNOR-GEN. OF THE COMMONWEALTH OF AUSTRALIA—The Rt. Hon. Sir R. C. Munro-Ferguson, G.C.M.G. (£10,000).

FIJI ISLANDS AND WESTERN PACIFIC—Sir E. B. Sweet-Escott, K.C.M.G. (£4,000).
NEW SOUTH WALES—Sir Gerald Strickland, G.C.M.G. (£5,000).

NEW ZEALAND—The Earl of Liverpool, G.C.M.G., M.V.O. (£5,000).

QUEENSLAND—Maj. Sir H. J. Gould-Adams, G.C.M.G., C.B. (£3,000).

SOUTH AUSTRALIA—Lieut.-Col. Sir H. L. Galway, K.C.M.G., D.S.O. (£4,000).

TASMANIA—Rt. Hon. Sir W. G. Ellison-Macartney, K.C.M.G. (£2,750).

VICTORIA—Hon. Sir A. L. Stanley, K.C.M.G. (£5,000).

WESTERN AUSTRALIA—Maj.-Gen. Sir H. Barton, K.C.M.G., C.V.O. (£4,000).

NORTH AMERICAN.

CANADA—*Governor-General*—The Duke of Connaught and Strathearn, K.G., K.T., K.P., &c. (\$50,000).

Provinces of Canada:—

ONTARIO—Lieut.-Col. Sir J. S. Hendrie, K.C.M.G., C.V.O. (\$10,000).

QUEBEC—P. E. Le Blanc (\$10,000).

NOVA SCOTIA—Hon. J. D. McGregor, (\$9,000).

NEW BRUNSWICK—Hon. J. Wood (\$9,000).

MANITOBA—Sir D. C. Cameron, K.C.M.G. (\$10,000).

BRITISH COLUMBIA—(\$9,000).

PRINCE EDWARD ISLAND—B. Rogers, Esq. (\$7,000).

NORTH-WEST TERRITORIES—Lt.-Col. F. White, C.M.G.

SASKATCHEWAN—G. W. Brown, Esq. (\$9,000).

ALBERTA—G. H. V. Bulyea, Esq. (\$9,000).

NEWFOUNDLAND—Sir W. E. Davidson, K.C.M.G. (\$15,000).

WEST INDIAN.

JAMAICA—Brig.-Gen. Sir W. H. Manning, K.C.M.G., C.B. (£5,000).

BRITISH HONDURAS—Sir W. Collet, K.C.M.G. (\$8,748).

BRITISH GUIANA—Sir W. Egerton, K.C.M.G. (£5,000).

BAHAMA ISLANDS—W. L. Allardyce, C.M.G. (£2,000).

TRINIDAD AND TOBAGO—Sir G. Ruthven Le Hunte, G.C.M.G. (£5,000).

BARBADOS—Sir L. Probyn, K.C.M.G. (£2,500).

Windward Islands:—

GRENADA—*Governor*—Sir G. B. Haddon-Smith, K.C.M.G., (£2,500).

ST. VINCENT—R. P. Lobb, C.M.G. (£800).

ST. LUCIA—Hon. C. G. Murray, (£1,000).

THE BRITISH EMPIRE—
contd.

Leeward Islands:—

ANTIGUA—*Governor*—Sir H. H. J. Bell, K.C.M.G. (£2,800).

ST. CHRISTOPHER NEVIS—T. L. Roxburgh, Esq., C.M.G. (£900).

DOMINICA—A. Mahaffy, C.M.G. (£900).

MONTSERRAT—Lt.-Col. W. B. Davidson-Houston, C.M.G. (£500).

VIRGIN ISLANDS—T. L. H. Jarvis, Esq. (£300).

BERMUDA ISLANDS—Lieut.-Gen. Sir G. M. Bullock, K.C.B. (£3,000).

AFRICAN.

GOVERNOR-GENERAL AND COMMANDER-IN-CHIEF OF THE UNION OF SOUTH AFRICA, AND HIGH COMMISSIONER FOR SOUTH AFRICA.—The Right Hon. Viscount Buxton, G.C.M.G. (£13,000).

BECHUANALAND PROTECTORATE—Lt.-Col. F. W. Panzera, C.M.G. (£1,200).

BASUTOLAND—Sir H. C. Sloley, K.C.M.G. (£1,500, with £500 allowance).

NYASALAND PROTECTORATE—Sir G. Smith, K.C.M.G. (£2,000).

ST. HELENA—Maj. H. E. S. Cordeaux, C.B., C.M.G. (£775).

SIERRA LEONE—Sir E. M. Merewether, K.C.V.O., C.M.G. (£2,500).

GAMBIA—E. J. Cameron, C.M.G. (£2,500).

GOLD COAST—Sir H. C. Clifford, K.C.M.G. (£4,000).

NIGERIA—Sir F. J. D. Lugard, G.C.M.G., C.B., D.S.O. (£6,000).

E. AFRICA PROTECTORATE AND HIGH COMMISSIONER FOR ZANZIBAR—Sir H. C. Belfield, K.C.M.G. (£3,000).

UGANDA PROTECTORATE—Sir F. J. Jackson, K.C.M.G., C.B. (£2,000).

SOMALILAND PROTECTORATE—G. F. Archer, C.M.G. (£800).

MEDITERRANEAN.

GIBRALTAR—Lt.-Gen. Sir H. S. G. Miles, G.C.B., C.V.O. (£5,000).

MALTA—Field-Marshal Lord Methuen, G.C.B., G.C.V.O., C.M.G. (£3,500).

CYPRUS—Maj. Sir J. E. Clauson, K.C.M.G., C.V.O. (£3,000).

EASTERN.

CEYLON—Sir R. Chalmers, K.C.B. (£7,000).

HONGKONG—Sir Francis H. May, K.C.M.G. (£6,000).

MAURITIUS—Maj. Sir J. R. Chancellor, K.C.M.G., D.S.O. (Rs. 50,000).

SEYCHELLES ISLANDS—Lt.-Col. C. R. M. O'Brien, C.M.G. (Rs. 15,000).

STRAITS SETTLEMENTS—Capt. Sir A. H. Young, K.C.M.G. (£6,500).

WEI-HAI-WEI—Sir J. H. S. Lockhart, K.C.M.G. (£1,500).

MISCELLANEOUS.

FALKLAND ISLANDS—W. D. Young, C.M.G. (£1,500).

CANADIAN RATES OF POSTAGE.

On Principal Classes of Mail Matter posted for Delivery within Canada.

Letters (except those for local delivery)	2 cents per oz.
" for local delivery	1 cent "
Special Delivery Letters	10 cents in addition to postage.
Legal and Commercial Papers and other partly printed and partly written matter	Letter rates.
Post Cards (single)	1 cent each.
Reply Post Cards	2 cents "
Newspapers and Periodicals (posted by Publishers) (A) <i>To Regular Subscribers and News Dealers</i>	$\frac{1}{2}$ cent. per lb.
(B) <i>Sample Copies</i>	1 cent "
Newspapers and Periodicals (posted by private individuals)	1 cent per 4 oz.
Books, Circulars, Maps, Drawings, Photographs, Lithographs, Printers' Proofs, &c.	1 cent per 2 oz.
Samples (bona fide trade samples without saleable value and not over 12 ozs. in weight)	1 cent per 2 oz.
Parcel Post. — <i>Any Post Office within 20 miles</i> —5 cents for first lb. and 1 cent. for each add. lb. up to 4 lbs., and 2 cents for each add. lb. to 11 lbs. <i>Any Post Office beyond 20 miles but within the Maritime Provinces</i> —10 cents for first lb. and 4 cents each add. lb. to 11 lbs. <i>Outside the Province in which a parcel is posted and beyond 20 miles radius</i> —10 cents for first lb. and 6 cents each add. lb. with extra charge of 2 cents per lb. for each Province crossed, maximum 12 cents per lb. <i>Maximum charge on any parcel shall not exceed 1 cent. an oz.</i>	
Registration Fee on all classes of Mail matter except parcels, 5 cents in add. to Postage.	

RATES OF POSTAGE TO OTHER COUNTRIES.

Letters —To United Kingdom, Newfoundland and British Possessions also the United States, 2 cents per oz.; To Postal Union Countries, 5 cents for the first oz., and 3 cents for each additional oz.
Post Cards —Single, 2 cents each; Reply paid, 4 cents each.
Printed Papers , 1 cent per 2 ozs.
Commercial Papers —5 cents for first 10 ozs., and 1 cent per 2 oz. thereafter.
Samples —2 cents for first 4 ozs., and 1 cent per 2 ozs. thereafter.
Registration Fee —5 cents for all articles.

CONCISE DIRECTORY.

We have inserted this short Directory for the use of our Subscribers under the impression that it will prove of utility to country and foreign residents who may desire to communicate with a House in any particular Trade or Profession, and have no means at hand of knowing whom to address.

Aerial Ropeways—John M. Henderson & Co., King's Works, Aberdeen. Aerial Hoisting and Transporting Machinery; Cranes, all types; Suspension Bridges; Stone-working Machinery. Tel. Add.: "Cranes, Aberdeen."

Aeroplane Manufacturers—The British & Colonial Aeroplane Co., Ltd., Filton, Bristol. Constructors of the well-known "Bristol" Aeroplanes. Contractors to the British Admiralty and War Office, and Foreign Governments.

Ammeters and Voltmeters—Nalder Bros. & Thompson, Ltd. Head Office and Works: 97a, Dalston Lane, Dalston, N.E. City Office: 34, Queen-st., London, E.C. Teleg.: "Occlude Kinland," London. Telep. No. 2365 Dalston.

Artesian & Deep Well Engineers—The Patent Automatic Water Finder Co., 64, Mark Lane, London. Water Supply Specialists. Irrigation and Waterworks Plant. Proprietors of Schmid's Patent Water Finding Instrument.

Artificial Legs, Arms, Hands & Eyes—W. R. Grossmith, 110, Strand, London. Est. 1760. Prize Medals, London, Paris, &c. Accurate fitting, lightness and natural movement. Catalogue post free.

Automatic Numbering Machines—

The Original "Bates" and "Wizard" Hand and "Wetter" Type-high Machines. Agent: Samuel Insull, senr., 34, Queen St., London, E.C. Teleg.: "Insull, Cannon, London."

Automobiles: Morris-Oxford & Morris-Cowley—Wholesale & Shipping Agent: W. H. M. Burgess, 36, 38, 40, Glasshouse Street, London, W. Telegs.: Whimbur Piccy, London. Phone: No. 8050 Gerrard.

Beef Suet Refined, "Aora" Brand—Manufacturers, Hugon & Co., Manchester. In 1lb. and $\frac{1}{2}$ lb. cartons and for Export in 1, 2, 4 & 7lb. tins. Samples and prices on application. The best fat for Puddings, Frying, etc. Used by the Army & Navy.

Billiard Cloth, and all kinds of Coloured Cloths—Mitchell, Inman & Co., 39, 40, Cloth Fair, London, E.C. Tel.: "Inman, Barb, London." Phone: "Holborn," 797.

Billiard Table Makers—Thos. Padmore & Sons, Edmund-street, Birmingham. Makers of Billiard Tables, Billiard Dining Tables, Balls, Cues, etc. Contractors to H.M. Government. Tels.: Billiards, Birmingham. Phone.: 1941 Central.

Bird Seed and Foods Specialities—
Dog Cakes and Medicines. All goods in packets. Aesthetic Bird Seeds, Shell Gravel, Parrot Food. R. Hyde & Co., Ltd., Camberwell, London, S.E.

Biscuits—Dunmore's Biscuits are sold all over the world. All kinds of Fancy and Dessert Biscuits for Home & Export Trade. W. Dunmore & Son, Ltd., South Wigston, Leicester; and Queen's Road, Battersea Park, London.

Blotting Paper Mfrs.—T. B. Ford (Ltd.), Snakeley Mill, Loudwater, Bucks. Samples and Prices on application. Each sheet water-marked "Ford, 428 Mill."

Boilermakers—Cammell Laird & Co., Ltd., Birkenhead. London Office: 3, Central Buildings, Westminster, S.W. Makers of Land, Marine and Water Tube Boilers, for Home or Export Trade. British Government Contractors.

Bolt & Nut, Screw & Rivet Makers—
Herbert W. Periam, Limited,
Floodgate-street Works, Birmingham. Also maker of Washers and Roofing Nails. Stock over 250,000 gross.

Boot and Shoe Manufacturers—
H. C. Smith, Ltd., Birmingham. All classes of reliable Footwear for Home and Export. High-grade Leggings and all Boot-trade Requisites. Price Lists issued.

Boot Uppers—Brown & Sons (Wellingborough), Ltd., Wellingborough. Mfrs. of the "Diamond" mark of Boot Uppers, suitable for all climates and conditions. Tel. and Cable: "Uppers, Wellingborough." Telephone, 58, Wellingborough.

Bottle Cap Manufacturers—Betts & Co., Ltd., 1, Wharf Road, City Road, London, N. Cable Add., "Checkmate, London." Phone: London Wall, 1918. Codes used: A B C, 5th Ed., and Lieber's.

Bottle & Jar Washing Machinery—
R. Powley & Sons, Ltd., Handel Street, Sunderland. "Simplex" Soaking and Brushing Machines for cleaning all kinds of bottles and jars without change of outside brushes.

Brick & Tile Machinery Makers—
Herbert Alexander & Co., Ltd., Engineers, Water Lane, Leeds. Machines for Hand, Animal, or Steam Power. Speciality: Concrete and Sand-lime Brick Machinery.

Bridges, Light and Suspension—
Alnwick Foundry and Engineering Co., Ltd., Alnwick, England, and 110, Cannon St., E.C.

Briquette Machinery Makers—
Briquette Machinery, Ltd., 161, Water Lane, Leeds. Machinery for briquetting Peat, Lignite, Coal, Iron Ore, Nickel, etc.

Building Materials—J. D. Cormack, Government Contractor, Bank Chambers, Finsbury Park, London, N. Bricks (all sorts), Roofing Tiles, etc., Stoneware Pipes, Terra Cotta and Fireclay Goods. Steel Window Frames. Constructional Ironwork, Bolts and Nuts. Building Materials of every description.

Buildings, Portable Wood and Iron, etc.—Alnwick Foundry and Engineering Co., Ltd., Alnwick, England, and 110, Cannon St., E.C.

Bulbs—Barr & Sons, 11, 12 & 13, King-street, Covent Garden, London. 38 Gold Medals and 10 Guinea Challenge Cup for Daffodils, 11 Gold Medals & Large Silver Cup for Tulips. Catalogues of the finest Daffodils, Tulips, Hyacinths, etc., sent free on application.

Carbonic Acid Gas—
The Carbonic Acid Gas Co., London, Manchester and Newcastle-on-Tyne. Wire "Playfellow," London. Tel. Dalston, 68.

Cardboard Box Manufacturers—
P. O'Reilly, Ltd., 32 & 33, Poolbeg Street, Dublin, Ireland. Telegraphic Address: "Boxes," Dublin.

Ceramic Colour Manufacturers—
James Hancock & Son, Ltd., Diglis Ceramic Art Colour Works, Worcester. Colours, Glazes & Stains for China, Earthenware, Glass, Bricks, Enamelled Iron, &c. Also Colours and Materials for Photo-Ceramics.

Chamois Leather—James North & Sons, Godley Mills, Hyde, near Manchester. Also Harvest Gloves, Housemaids' Gloves, etc., including Driving, Motor, Cricket, Golf and Boxing.

China Clay Merchants—Grose & Stocker, Stoke-on-Trent. All qualities of China Clay for Paper Making, Bleaching and Potting. Samples and Prices on application. Telegrams: Stocker, Stoke-on-Trent.

Chlorodyne—Dr. J. Collis Browne's. The Original and only Genuine Chlorodyne. Of all Chemists.

Christmas and New Year Cards—
Tuck, Raphael & Sons, Ltd., Raphael House, City, London. Christmas, New Year and Birthday Cards, Christmas Autograph Stationery, Calendars, Toy, Painting & Gift Books, Engravings, Photogravures, etc. Telegs.: "Palette," London. Phone, 5040-1-2, and 1400 London Wall.

Cleaning and Polishing Rags—
A. Joseph, Earl Street, London Road, London, S.E. Supplied on shortest notice at lowest possible prices. See advert. back cover.

Cloth Cuttings Contractor—
A. Joseph, Earl Street, London Road, London, S.E. Every description purchased for cash. See advert. back cover.

Collapsible Tube Manufacturers—
Betts & Co., Ltd., 1, Wharf Road, City Road, London, N. Cable Add., "Checkmate, London." Phone: London Wall, 1918. Codes used: A B C, 5th Ed., and Lieber's.

Collar Manufacturers (Wholesale only)—Welch, Margetson & Co., Ltd., Moor Lane London, E.C.; also at Manchester, Glasgow, Bristol, Dublin, etc. And Melbourne, Sydney, Capetown, Toronto, New York, Buenos Aires. Also manufacturers of Shirts, Ties, Braces, etc.

Compass Makers—F. Barker & Son, 12, Clerkenwell Road, London. Makers of Pocket Luminous and other Compasses; also Drawing Instruments. Scout Compasses, Aneroid Barometers & Sundials. Lists Free.

Cotton Bags—From 1 to 280 lbs., in white and unbleached Calico. T. & W. Judge. Original Manufacturers and Printers, Cumberland Works and Manchester Works, Kennington, London. Phone: 3226, Central. Tele. Add.: "Cotton Bag, London."

CONCISE DIRECTORY—continued.

Copying Apparatus Mfrs.—The Copying Apparatus Co., Ltd., 123, Cannon St., London, E.C. National Duplicator, Simplex Hektograph, Neo Cyclostyle, A. B. C. Copier, Automatic Cyclostyle, Mimeograph, Duplicator, Hektograph, Black Autocopyist, &c. Write for circulars.

Corundum Wheel Manufacturers—Luke & Spencer, Ltd., Hercules Works, Broadheath, Manchester.

The original British Firm, established 30 years. Specialists in all kinds of Grinding Machines. Government and Railway Contractors. Send for Catalogue.

Cotton Goods—Kenyon, James & Son, Ltd., Roach Bank Mills, Bury, Lancashire, Manfrs. of Longcloths, Shirtings, Sheetings, Flannelettes, &c. Trade Mark: Three Acrobats. Tele. Add.: "Camellia, Bury."

Cranes and Lifting Machinery—Thomas Smith & Sons, Steam and Electric Crane Works, Old Foundry, Rodley, near Leeds. Tele. Add.: "Smith, Rodley." London Office: 25, Victoria St., Westminster, S.W. Tele. Add.: "Accrocher, Vic, London."

Cyder (Devonshire)—In Casks or Bottles, from John Symons & Co., Ltd., makers of "Symonia" Brand for Export. Fruit Mills: Totnes, Devon. London Stores: Ratcliff, E. Please write for quotations.

Damp-proofing Emulsion—"Protex" for the Curing of Damp Walls, and Preservation of Iron and Steel Work. Booklet M. George M. Callender & Co., Ltd., 25, Victoria St., London, S.W.

Distempers (Dry Powder)—Alabastine Co. (British), Ltd., Church St., S. Lambeth, London, S.W. Mfrs. of the world-renowned Alabastine and Jelstone, 40% cheaper than distempers in paste. Colour Cards on application. Send for free copy of "House made beautiful."

Drain Pipes (Stoneware) Manufacturers—Thos. Wragg & Sons, Ltd., Swadlincote, Burton-on-Trent. Pipes and Connections, all sizes to 36 in. diameter; also enamelled Sinks, Urinals, Trough Closets, Glazed Bricks, etc.

Electric Lamps—Cryselco Limited, Kempston Works, Bedford. Makers of the "Cryselco" Carbon and Metal Filament Lamp. Contractors to the British and Foreign Governments. Cable: "Cryselco," Kempston, England. A. B. C. 5th.

Electric Dynamo and Motor Manufacturers—Mawdsley's, Ltd., Zone Works, Dursley, Glos. Zone Patent Dynamos and Motors, Crane and Lift Motors, Pumping Sets, Generating Sets, with Steam, Gas, Oil or Petrol Engines.

Electrical Manufacturers—The Efadem Co., Ltd., 18, Queen Street, Manchester. Makers of "Tec" Batteries, Pocket Lamps, Hand Lanterns, Bells, Dynamo Lighting Outfits for Motor Cars, etc.

Emery Wheel Manufacturers—Luke & Spencer, Ltd., Hercules Works, Broadheath, Manchester. The original British Firm, established 30 years. Specialists in all kinds of Grinding Machines. Government and Railway Contractors. Send for Catalogue.

Fancy Goods and Toys—(English made). Purses, Bags, and such like. Faudels, Newgate Street, London. Catalogue free on application.

Fencing, Railing and Gates (Iron)—Bayliss, Jones & Bayliss, Ltd., Wolverhampton. Also Manfrs. of Railway and Tramway Fastenings, Lock-nuts, and Fire Bars. Castings up to 30 tons. Builders' Ironwork, &c., &c.

Fishing Rod and Tackle Specialists—Hardy Brothers (Alnwick), Ltd., London and North British Works, Alnwick. Specialists in Split Bamboo, with and without Steel Centre, Greenheart, &c. Lists free.

Ginger Ale—Cairns & Co., Ltd., Mineral Water Manufacturers, 26-32, Landseer Street, Belfast. Exporters of "Banquet Special" Brand Belfast Ginger Ale.

Glass Bottle Manufacturers—Cannington, Shaw & Co., Limited, St. Helens, Lancashire, England. Manufacturers of Glass Bottles, Codd's Ebonite Screw and Crown Cork Mouth Confectioners' Bottles, Boxes and Cases.

Government, Railway, and Shipping Contractors—A. Joseph, Earl Street, London Road, London, S.E. Every class of Stores purchased for cash.

Grab Dredging and Excavating Machinery (The Kingston Patent)—Rose, Downs & Thompson, Limited, Old Foundry, Hull; and 12, Mark Lane, London, E.C.

Grinding (Abrasive) Machinery—Luke & Spencer, Ltd., Hercules Works, Broadheath, Manchester. The original British Firm, estab. 30 years. Specialists in all kinds of Grinding Machines. Government and Railway Contractors. Send for Catalogue.

Hats—Battersby & Co., Ltd., Offerton Hat Works, Stockport, England.

Hydraulic Engineers—Hollings & Guest, Ltd., Thimble Mill Lane, Birmingham. Hydraulic Baling Presses, Tyre Fitting Presses, Oil-extracting and Forging Presses, Pumps and Accumulators. Send for Catalogue.

Inks (Writing and Copying)—E. J. Hollidge, Ltd., Rutland Rd., South Hackney, N.E. Telegrams: "Hollidge, London." Tel. No.: Dalston, 1906.

Insecticide—Acme Chemical Co., Ltd., Tonbridge, Kent, and Bolton, Lancs. Specialists in Insecticides and Fungicides for Fruit Trees, Tea-plants, &c. Quassia Chips, Arsenite of Soda, Arsenate of Lead Paste, &c., &c.

Iron Ore Merchants and Importers—Hanson, Brown & Co., Ltd., Middlesbrough, Newcastle-on-Tyne, and Liverpool, England. Hematite, Basic and Manganese Ores, Non-Ferrous Ores, Residues. Correspondence in English, Spanish and French. Cables: Lion, Middlesbrough.

Jewellers—Lindsay & Paisley, 25, Gordon St., Glasgow, Mnfg. Jewellers, Ring Mounters and Makers of Diamond, Pearl & Fancy Stone Jewellery. Dealers in Precious Stones and Pearls. Telegrams: "Brilliant, Glasgow."

Lace Agents—Specialists in all kinds of English, French, Italian, and Belgian Laces, Flouncings, Plain Nets, Scarves, Collars, etc. Snow Bros., Ltd., 12, 13, Bow Lane, London, E.C.

Lace Thread Manufacturers—

French, Russell & Co., Leicester.
Makers of "I. & W. Taylor's Mecklenburg Linen Thread." Best Thread for all Fancy Work. Made entirely in Great Britain.

Leather Cloth Manufacturers.—

New Pegamoid, Ltd., 134, Queen Victoria St.; Goods entrance, Peter's Hill, E.C. Sole Mfrs. of the "Pegamoid" Brand.

Leather Mfrs—John S. Deed & Sons, Ltd., 91, New Oxford St., London. Factories: Mitcham & Carshalton, Surrey; Middlesex Leather Works, Arthur St., London. Specialities: Doova Nap Leather, Moroccos, Roans, Skivers, Persian Goats and Velvet Leathers.

Leggings—Brown & Sons (Wellingborough), Ltd., Wellingborough.

Mfrs. of the "Diamond" mark of Leggings or Gaiters for all climates and conditions. Tel. & Cable: "Uppers, Wellingborough." Tele.: 58 Wellingborough.

Letter Files and Office Specialities—

The Stolzenberg Patent File Co., Ltd., 210, Bishopsgate, London, E.C. All-British capital and employees. The original Flat File; of British material and manufacture throughout.

Lifts—Waygood-Otis, Ltd., Falmouth Road, Great Dover Street, London, S.E.

Lime and Limestone—The largest output in the World. The purest Lime known in Commerce. The Buxton Lime Firms Co., Ltd., Buxton, Derbyshire. Agencies throughout Great Britain and Ireland for Home Trade or Shipment.

Linen Manufacturers to Their Majesties the King and Queen—Robinson & Cleaver supply Damask and Household Linens at Factory Prices, and send Price Lists and Samples anywhere, post free. 46K, Donegall Place, Belfast.

Loose-Leaf Ledgers—Spicer Brothers, Ltd., Paper Makers, Dept. 12, New Bridge Street, E.C.

The pioneers of the Loose-Leaf Ledger in the U.K. Principal makes, "St. George," "Tudesc" and "Dade."

Loose Leaf Metals—The British Loose Leaf Manufacturers, Ltd., 25, Finsbury Street, London, E.C., make mechanisms for all kinds of Loose Leaf Binders, also supply the complete books.

Mantle Manufacturers (to the Trade and Shippers only)—

Corby, Palmer & Stewart, 39, 40, 41, St. Paul's Churchyard, London, E.C. Fur-lined and Motor Coats, Ladies' and Children's Mantles, Jackets, Costumes, Gowns, Skirts, our noted Ladies' Palmerain Showerproof Coats, Marabout and Feather Stoles, and Furs.

Machinery and Stores for Engineers, Mines, Mills, Tea Gardens, &c.

George Hatch, Ltd., Queenhithe, London, E.C. Illustrated catalogue, 600 pp.

Maps: Publishers, Mapsellers and Geographical Booksellers—

Edward Stanford, Ltd., 12, 13 & 14, Long Acre, London, W.C. Cartographers to His Majesty the King. Catalogues free.

Masonic Jewels, Regalia & Furniture—

Actual manufacturers. Oldest firm in the trade. Est. 1801. Catalogues free. Spencer & Co., 19-21, Great Queen Street, London, W.C. Tele.: "Ashlar, Westcent, London." A.B.C. Code, 5th edn.

Motor Body Builders, Carriage and Harness Makers—

Offord & Sons, Ltd., 67, George St., Portman Square, London. Tel. Add.: "Droffo" London. Ph.: Paddington 99. New Catalogues and Second-hand lists free. Specialité: English Bodies for Ford Cars.

Muslin—Wm. Strang & Son, King's Park and Newhall Factories, Glasgow.

Plain and Fancy Muslins for Dress and Drapery purposes, Madras, Lappet, Organdie, Grenadine, Harness and Canvas Curtains or Piece Goods.

Newspaper Subscription Agents and Booksellers—

Wm. Dawson & Sons, Ltd., Cannon House, Bream's Buildings, London, and at Cape Town, Johannesburg, and Toronto. Our latest Price List free on application.

Non-Ferrous Scrap Metal—

A. Joseph, Earl Street, London Road, London, S.E. Spot Cash Buyer. Best prices. See advert. back cover.

Oil Engines—Petters, Ltd., Yeovil, England. Specialists in the manufacture of Oil Engines, from 2 to 200 B.H.P., for Refined and Crude Oils. Also Engines combined with Pumps, Dynamos and Mining Plants.

Oil Seed Crushing, Refining and Filtering Machinery—

Rose, Downs & Thompson, Limited, Old Foundry, Hull; and 12, Mark-lane, London, E.C.

"Oilskin Clothing"—

H. E. Walters, Marlborough Rd., Old Kent Road, London, S.E. Tel.: Hop 1253. Teleg.: Toitworn, London. Also Oiled Silks for surgical use. Driving and Motor Aprons. Horse Loin Covers, etc.

Organ Builders—

Brindley and Foster, 46, Suffolk Road, Sheffield, England. Estab. 1854. A B C 5th Ed. and A1 Codes.

Paper Makers, Wholesale and Export Stationers—

W.V. Bowater & Sons, Ltd., Head Office: 159, Queen Victoria St., London, E.C. News, Printings, Art Papers and Boards, Writings, Colours, Glazed Casings, &c.

Pastes—Charles M. Higgins & Co., 11, Farringdon Avenue, London.

Office Paste, Vegetable Glue, Drawing Board Mucilage and Photo Moulder.

Patent Agents—

Jensen & Son, 77, Chancery Lane, London, W.C. Patents, Designs & Trade Marks secured all over the World.

Pavement Lights—

The British Luxfer Prism Synd., Ltd., 16, Hill St., Finsbury, London, E.C. Manufacturers of all constructions through which daylight is admitted into a building. Luxfer Prisms, Fire Resisting, Ornamental & Roof Glazings.

Pencils—

Eagle Pencil Co., Tottenham, London, N.

Teleg. Add.: "Octennial," London. Telephone, Tottenham 35 (two lines).

Manufacturers of Pencils, Penholders, Propelling Pencils, Erasers & Fountain Pens.

CONCISE DIRECTORY—continued.

Pictorial Post Cards—Philip G. Hunt & Co., Printers of Real Photo (Glossy and Matte), Collotype, Doubletone and Coloured. Works: 332, Balham High Road, London, S.W. Samples and prices free.

Pins, Hair Pins, etc.—Critchley Bros., Ltd., Wimberley and Dark Mills, Brimscombe, Eng. Domestic Pins, Hair Pins, Wood and Bone Knitting Pins, Crochet Hooks, etc. Wholesale and Export.

Pipes—Bewlay, 49, Strand, London. All smokers should send for Bewlay's beautifully illustrated Pipe Catalogue, gratis and post free. Bewlay's are famous for Pipes. Wholesale and export trade quotations on application.

Postage Stamp Merchants and Philatelic Publishers—Whitfield King & Co., Ipswich. Foreign and Colonial Postage Stamps for Collectors. Publishers of the Standard Postage Stamp Catalogue (Annual), price 2/-, post free. Also of the "Acme," "Standard" and "Paragon" Postage Stamp Albums.

Poultry Breeders & Exporters—Wm. Cook & Sons, originators of the Orpington fowls and breeders of over fifty varieties. Only address: St. Mary Cray, Kent. Phone: 7 Cray. All risk taken to every part of the world. Correspondence cordially invited.

Printers, Lithographers, &c.—G. Cornwall & Sons, Aberdeen, Scotland. Designers, Lithographers, General Printers and Bookbinders. Map & Plan Draughtsmen. Calendar Manufacturers and Govt. Contractors.

Printers' Rollers and Composition—
"The Durable" Printers' Roller Co., Ltd., Charles St., Hatton Gdn., London, E.C. Contractors to H.M. Printing Offices. Compo. for Home and Export. Send for "Right-Hand of the Press" free by post.

Printing Inks—Ch. Lorilleux & Co., 2, Maclean's Buildings, E.C. Works: Newington Green, N.

The oldest and largest Makers in the World. 10 Factories, 50 Branches.

Printing Machinery of all kinds—William Dawson & Sons (Otley), Ltd., Ashfield Foundry, Otley, Yorks. Inventors & Patentees of the Original "Wharfedale."

Printing Material Manufacturers—H. W. Caslon & Co., Ltd., 82 & 83, Chiswell St., London, England. Tele.: "Caslon, London."

Pumping Machinery Mfrs.—Pulsometer Engineering Co., Limited, Reading, England. Steam Pumps for all duties, including "The Pulsometer," the best outdoor pump, Centrifugal & Turbine Pumps.

Razors and Safety Shavers—The "Sword Steel" Razors, made by Wilkinsons (Pall Mall, London), Sword Cutlers to the King, are known the World over as the Best.

Retort Makers—B. Gibbons, Junior, Ltd., Dibdale Fire Clay Works, near Dudley, Worcestershire. Makers of Gas Retorts & Fire Clay Goods of every description for Home & Export trade. Tel.: Machine, Lower Gornal.

Ropes—of Manilla, Russian Hemp, Coir, etc., Steel Wire Ropes for all purposes: also Binder Twine Manufacturers.

R. Hood Haggie & Son, Ltd., Newcastle-upon-Tyne.

"Royal" Navy Serges, Tweeds, Cottons, &c.—For Ladies, Gentlemen and Children. Light weight materials for warm climates. Patterns, &c., post free. Egerton Burnett, Ltd., R. C. Warehouse, Wellington, Som., Eng.

Sacks and Bags—For all descriptions of Produce for Home and Foreign Markets. J. De Paiva & Co., 11, Drury Lane, Liverpool. Tele.: "De Paiva, Liverpool." Phones: 1343 & 1363, Liverpool Central.

Safes and Steel Doors—Whitfield's Safe and Door Co., Godliman-house, Godliman St., London, E.C. Works: Oxford St., Birmingham.

Safety Lamps—Ackroyd & Best, Ltd., Morley, nr. Leeds. Miners' Safety Lamps, all kinds. Speciality—Electrically lit, magnetically unlocked lamps, and Safety Underground Relighters.

Scrap Metals for Foundries, etc.—A. Joseph, Earl Street, London Road, London, S.E. Every description of non-ferrous Scrap at lowest prices. See advert. back cover.

Scissors & Shears—W. J. Ramsbottom, Ltd., Vine Works, Sheffield. Steel Scissors, Shears for Tinmen, Engineers, Basket, Brush, Mattress and other Makers. All hand-forged. Also Painters' and Plumbers' Steel Tools.

Second-Hand Machinery—Thos. W. Ward, Ltd., Albion Works, Sheffield. Second-hand Cranes, Locos., Contractors' Plant, Rails, Steam and Gas Engines, Electrical Plant, Machine Tools, Winches, Boilers, Tanks. Catalogue free. Tele.: "Forward, Sheffield." Phone 4321 (6 lines).

Shaftings for Power Transmission—Thomas A. Ashton, Ltd., Mechanical & Electrical Engineers, Norfolk St., Sheffield. Cable and Teleg. Address: "Ashton, Sheffield." Tele. No. 1561.

Slates, Slate Slabs (Welsh), &c., &c.

Davies Bros., Portmadoc, N. Wales. Blue, Red & Green Roofing Slates, Slate Slabs, Urinals, Lavatories, Cisterns, &c. Home and Export. Telegrams: "Seivad."

Solder Manufacturers—Quirk, Barton & Burns (St. Helens), Limited, St. Helens, Lancashire. Tinman's, Blowpipe and Plumbers' Solders, and all anti-friction Alloys. Telegs.: Quirk, St. Helens. Phone: No. 5 St. Helens.

Sole Leather—All grades of English Sole Leather (Butts and Bends) at keenest current quotations. Colonial enquiries solicited. H. C. Smith, Ltd., Bull Ring, Birmingham.

Spiral Springs—Herbert Terry & Sons, Ltd., Redditch. Teleg. Add.: "Novelty," or "Springs," Redditch. New List No. 20 post free.

Sponge Importers, Exporters and Merchants—Henry Marks and Sons (Branch of International Sponge Importers, Ltd.), 42, 43, 44 & 45, Houndsditch, London, E.

Enquiries are invited for samples and prices.

Stained Glass & Memorial Brasses—

Abbott & Coy. St. John's Studio, Lancaster. Est. 1860. Art Catalogue and references free. Artistic work at commercial prices. Agents wanted in the Colonies.

Stair Treads—Interchangeable Rubber

Stair Treads.—Consisting of Metallic Frames fitted with Rubber Blocks, which can be renewed when worn. W. E. Gooding, North Road Works, Holloway, London, N. 'Phone 1633 North.

Steel Castings—F. H. Lloyd & Co., Ltd.,

James Bridge Steel Works, near Wednesbury. Steel Founders. Manufacturers of Steel Castings by the Siemens Martin and improved Tropenas Processes, from a few pounds to several tons in weight.

Steel Construction—Redpath, Brown &

Co., Ltd., Constructional Engineers, Riverside Works, E. Greenwich, S.E., and at Edinburgh, Glasgow & Manchester. Stock carried 20,000 tons.

Stopper Manufacturers—R. Powley &

Son, Ltd., Handel Street, Sunderland. "Powley's" Patent Swing Stoppers for all kinds of Beer, Mineral Water & Milk Bottles. Tel.: 671. Telegs.: "Powley, Sunderland."

Sugar Machinery Speciality—

Centrifugal machines to drive by belt, water or electricity. Catalogues free.

Watson, Laidlaw & Co., Ltd., Engineers, Dundas Street (South), Glasgow.

Surgical Dressing Manufacturers—

For all kinds of Dressings, obtain quotations from Lambert & Lambert, Ltd., "Bandage Specialists," Hull. Tel. Cable: "Runic, Hull." Code used: Western Union.

Surveying, Drawing & Mathematical

Instruments—W. F. Stanley & Co., Ltd. The largest Manufacturers in the World. Please send for our K120 Catalogue. Post free. 286, High Holborn, London, England.

Tailoring and Outfitting—J. & H. Ellis,

201, Strand, London. Special Colonial and Foreign Department. Clothes on self-measurement principle a speciality. Measurement Form, Patterns, Price List on application.

Tanning Material Merchants—

Humphreys, Percival Ellis & Co., 90, Tooley St., London, S.E. Sole consignees for Gt. Britain and Australasia of Forestal Co.'s Quebracho Extract. Plantation Gambier, Hemlock, Bleaching, Larch, Chestnut and Oak Extracts; Shumac, Valonia, Myrabolan, Guara, Babla. T. A.: "Quebracho, London." T. N.: Hop. 2727.

Tape Measures—Howard Wall, Limited,

25 to 37, Hackney Road, London, N.E. Manufacturers of "Dean-Bedington" measures for Surveyors, Builders, and all trades. Also of "Dean's" and "Pickles" for Tailors.

Theatrical Chairs and Seats—

H. Lazarus & Son, Ltd., 21, Great Eastern St., London, E.C. Tip-up Chairs and Seating for Theatres, Cinematograph Halls, also for Mission Halls, etc. Catalogues post free. 'Phone No. 9153, London Wall. Telegrams: "Malleable, London." Code A B C, 5th Edition.

Tin Foil Manufacturers—

Betts & Co., Ltd., 1, Wharf Road, City Road, London, N. Cable Add., "Checkmate, London." 'Phone: London Wall, 1918. Codes used: A B C, 5th Ed., and Lieber's.

Tubing (Weldless Steel)—

Accles & Pollock, Ltd., Oldbury, Birmingham. Tubing for Aeroplane Manufacturers, Cycle and Motor Car Builders, Electrical and General Engineers, Bedstead Makers, &c. Handlebars bent, built and plated.

Type Composing Machines—Linotype

and Machinery, Limited. Head Office, 188, Fleet St., London, E.C. Works: Broadheath, near Manchester. Makers of the Linotype Composing Machine and Printing Machinery for Newspaper and General Printers.

Typesetters—

H. W. Caslon & Co., Ltd., 82 & 83, Chiswell St., London, England. Tele.: "Caslon, London."

Typewriters—Yost Visible Typewriters.

Also with Adding and Subtracting mechanism. Supplies of all kinds. Copying. The Yost Typewriter Co., Ltd., Head Office: 50, Holborn Viaduct, London, E.C.

Vegetable Fat Manufacturers—

The Vegetable Oils Products Company, Colonial House, Tooley Street, London. British Factories, London and Liverpool. 'Phone: Hop 1935. Telegs.: "Nuttephat, Tooley, London."

Weed Killer—Acme Chemical Co., Ltd.,

Tonbridge, Kent, and Bolton, Lancs.

The "Acme" Weed Killer permanently destroys Weeds and Scrub growing upon walks, roads, &c., by one application.

Well Boring Tools—Oil Well Supply Co.,

Dashwood House, London, E.C. (Head Office—Pittsburgh.) Everything supplied as used to drill and equip oil, gas and water wells in any part of the world.

Whips—

Lardner & Lardner, 23, West Smithfield

(late of 24, 25, 26, Hosier Lane), London, E.C.

Mfrs. of all kinds of Whips & Thongs for the Home and Colonial Markets. Price Lists and Terms on application. Est. 1820.

White Metal Alloys—

A. Joseph, Earl Street, London Road, London, S.E. Lead & Tin manufactured to any formula in Strip or Bar form. Lowest trade prices. See advt. back cover.

Wire Rope and Appliance—

Bullivant & Co., Limited, 72, Mark-lane, London, E.C. Wire Ropes for all purposes. Blocks, Pulleys, and all appliances.

Wood Brokers and Agents—

C. Leary & Co., 4, Lombard Court, London, E.C.; also at Liverpool, & West Hartlepool. Agents for the sale on Commission, of all kinds of Wood-goods.

Wood Preservative Manufacturers—

"Jodelite," Reg. The original British Wood Preservative, and for the prevention of the attack of White Ants and Teredo. Joseph Dee and Sons, 5, Cross St., Manchester (Contractors to H.M. Government). Telephone: City 1899. Tel. Add.: "Delight." Code A. B. C. 5th.

Woodworking Machinery—Thomas

Robinson & Son, Ltd., Rochdale, England, London: 79, Queen Victoria Street, E.C. Sydney, N.S.W.: 93, Bathurst Street. Codes: A.B.C. A1 and Liebers.

Worsted and Woollen Cloth Mfrs.—

Herbert Dickinson (and merchant of all classes of textiles suitable for Tailors' use). Warehouse and Offices, 3, Northumberland St., Huddersfield.

Memoranda of Reference, &c.

As Addresses, Quotations, and other matters of Interest.

I
January

1 SATURDAY [1-365]

madras

1st Month 1916

Circumcision, Bank Holiday, Scotland.
Holiday, Stock Exchange

break we are having no one. Lots of
going away. Saw park fair at night
well attended. This morn: Called
Telephone for Cidyan. Thru to
Mrs. George Gargina - asked her
to send - motor car. Wh. she did
at 11. P.M. Drove to work many kept
away still in to enjoy a account
of the Theosoph: Confess. Saw Mrs
V. Manan still there. He seemed to be
ashamed a bit of his negligence why
he had not replied to my letter. He
fumbled. Dined at deadhunter Chambers
for 1st - each. Went to the beach - nice
quiet & shantie overawing and
has. Very much Saline sun. Saw
Library again with the sup: Gardener
in charge of the same.
Saw Mrs. Gargina's bronze bust in the
hall is very imposing. Returned
back to popular park fair where
had our tea & then went home.
Dined at a maharaja place.
Gone to home for Nithu at 4 1/2
Vampery about 10 white nourse.
Physics house made Enquiries. Mrs. V.
was here for a few days. White at Ban-
dona.

This morn: went to the museum. Saw
 n. history section, most fortunate the
 oriental library was also open. Saw
 the Srivastava - the assistant. Looked
 for Anant Khand but saw only a
 small portion of it. ordered a few more
 to be copied. On going - left 10/- advance
 Charakpanchakhyā

Suphastam

Akashbhairavkalpa

Kuchumantantri

Atsaya Jambhū

Ayurvedashikhandika.

Very obliging in the library. met
 then a copyist name

E. R. Krishnamacharya

Shri parvat-copyist Govt. orient. lib.
 Madras

He has a few more his brother's

He will copy them for me if desired.

His brother's address is

E. R. Srinivas Jaghava charya
 physician

Venkataramana Dispensary, Mylapur

He has a few more in ayurved: Madras.

To write for him he has collected in Rang-
 veram.

3
January

Pondichéry

3 MONDAY [3-363]

1st Month 1916

Quarter Sessions Week

Left early this morn: for Pondichéry.
arrived there at 3. Describes place
as all the men have gone to France
to fight. place has a french look.
harbour - pier. broad roads.

Stayed at the Grand Hotel de l'Europe
went dinner - took claret there wh:
was very bar at 1/4 a bottle.

Went round the Town. Saw "Duplex"
S.S. wh: had arrived from Calcutta

Trichur

Left Villuparam for Trichur by 3. A.M.
Mined 3rd class. Missed two trains but no
more

5
January

Tuesday - Seringam

5 WEDNESDAY [5-361]

1st Month 1916

● 4h 45m A.M. (Greenwich).
Dividends due at Bank

Jambukesvaran

1916 31 Days

6 THURSDAY [6-360]

6
January

Epiphany. Twelfth Day

7
January

Madura

7 FRIDAY [7-359]

1st Month 1916

pt. Sawasira Gurukkal (Priest)
Rockfort Trichur
man who spoke of the Natraya in
Kambakkam.

1916 31 Days

Madura

8 SATURDAY [8-358]

8
January

Cambridge Lent Term begins.
Fire Insurances expire

9

January

Madura — Rameswaram.

9 Sunday - 1 aft Epiph [9-357]

1st Month 1916

11
January

Trichi - Tanjore - Kumbakonam

11 TUESDAY [11-355]

1st Month 1916

Hilary Law Sittings begin

Kumbakonam

1916 31 Days

12 WEDNESDAY [12-354]

12
January

3h 38m A.M. (Greenwich)

13
January

Madura 12-10 am.
13 THURSDAY [13-353]

1st Month 1916

Went out last night at 12-10 am.
Chelvan Street. To my great
astonishment saw Durban as well
as I did not expect him. He was
going to Ceylon. but they did not per-
mit him to leave.

Narasim is with me Am very happy
put it in train 2nd class with me.

Brought to Chelvan, Comfortable
sleep. many asked passengers and
fare for packing. the length of paper
who took whole of the long 2 D. word books
no packing due to my recent joint
of books. I want to see temple
again at night.

Mr. Suba Krishna, his brother &
came. they are trying to get their
papers better in my service

He has come. Saw also the artist; whose
name & address is:

Sent off Sadasiva Sunkel of Trichi
back of - for his labours and told him
to take off 12/- from the money (balance)
of 80/- I gave him for the over. as
Commission

1916 31 Days

Madura

14 FRIDAY [14-352]

14
January

Oxford Lent Term begins

We hope to leave here tonight. Trying hard
for packing. The Carpenter is worthless
fellow. Joining two boxes together.
Nailing etc. we are all helpless. And
when packing came as if for me
for Madras one English gentleman who
volunteered to work up grass road Nalairaj
a do general packing. He was an excellent
man - so diff. the labour was of course
he said he was doing that for Nalairaj
& for nobody else. He was hesitating
but finished the packing at 7-30 night
were all tired. I was happy at last
packing was done. He cost a good deal,
net also means mail correspondence.
Very talkative. What to do as regards
prabhakar for Nalairaj? No more
mess to be had from partha & artist - box
Saw tank ads. The Nalairaj's trunk
too heavy - am staying in the same room
as before. I like Madura very much.
Should like to stay here a few months &
do some work in Tamil.

15 Madras left at 1-20 night

January

15 SATURDAY [15-351]

1st Month 1916

Took packed case containing 15
slab - paper to be 6 inches 33 feet
new receipts so long. Again
to find them when they were done Rs 11/5
he said. Thus it would come to low
much more exp. to Amster.
Main parcel office - has it sent to
Rs 6/1 - to Amster weight 6 lbs 30 decs
- for - Bulchish to be. Was at last happy to
that it had started to Amster that was
expected - it was sent so much.

Telegraphical assistance read yesterday at 6 P.M.
after so many inquiries at the Post office
for 20/1 -

~~sent off day before~~ Gopal Krishna
Joshi was with me with a Mr in Tins
- Nishant. Very kind of him. He also
brought a Brahmin who he said was his
to accompany me to Amster. He was
a lawyer - a lobbie fellow. Did not
like him at all. He said "Rs 5/1 - for"
me but he had contact with him.
Sent last 50/1 to artist. for many
promises for him.

Quilua - Backwater - to Trivandrum

16

1916 31 Days

16 Sunday - 2 aft Epiph [16-350]

January

Left last night Monday all night in
 Train - this morning early change at
 Maniyachi where got in Compartment
 with Eurasian lady & a Scotch gentleman
 who was old & funny. They were both
 kind. Breakfast at Shenkottah - Pigeons
 & rut. Scenery very beautiful - partly hilly
 country in Travancore. To our right - the
 rain forest was in places with tigers
 & elephants. Eurasian lady's relation
 who came in the train - Ten for the
 at 3 p.m. Quilua - hot - went to boat -
 Lancing. Bright provisions for
 tonight dinner - Jarvis, bread, Eggs
 lots of bananas here. Strict brown
 trousers only. Boat 3/8 for the journey
 to Trivandrum.

17
January

Trivandrum at noon

17 MONDAY [17-349]

1st Month 1916

Very tiresome journey by Back water - we
left Cochin at 4-10 p.m. by special canoe
all night in the boat. Dumps to me had
taken with us. pretty unpleasant.

Arrived Trivandrum at 12 noon.

met P. W. D. man - went to Union Club by
high building - at 5 - went to office got
then met under - Chief Security to Govt
Vern - He wanted the letter with Govt to
me. Says also his fear to accompany us.

at 8-30 left for museum where quite unexpectedly
 met Munich friend Padmanabha Pillay.
 about whom Mr Arnold had spoken so
 much before. He was very glad to see
 me & I had a very pleasant chat in German etc.
 The new school of art but not much for
 collection there. They had sent it to the
 exhibition. Did not buy anything there.

Home at 12. Saw the work. Bought
 bought a few articles from him.

Afternoon went to see Arjuna's collection
 & met the headman Vamsey. & his
 several pupils. Saw a snake to them
 in Sanskrit. He promised to show me the
 Dhara and other things. at his
 place.

Saw many work but was not impressed
 much. I bought a few small pendant
 elephant for 10/- etc.

Strolled in front ground in front of the
 temple Padmanabha.

At 7 the principal again to see the Yambam
 with C. C. has them both. He
 asked them to see or have a new name
 for me.

This morn: very busy with Dharadroni gantam -
 Last night was promised to be given one gantam.
 Today both went for Rs 50 - (30/- for 1st & 20/- for 2nd)
 Both are made of nut ramic wood.

Learn Chief Secretary also said to go to him
 he has promised to send me the Travancor
~~Sole~~ Skt series set to Amritsar.
 Had to write to him first.

Padmanabha gave me Baesoka - which
 indeed a great acquisition - which brings
 Cambrian in the Baesoka work -
 also said to go to Venkatas the under-
 Secretary to Government.

Breakfast at Simha's house. C. his office
 one engineer did not attend - us.

Visited the Dispensary of Dr. Sastri. He
 met kind Sankaran who gave me a number
 of a book. 2 or 3 interesting maps of
 Sankaran - a several small printed works -
 now in the library.

Had a great day today - very successful -
 especially glad for getting the Dharadroni
 Gantam

Left Quilon at 9-30 P.M. Dined at Syriania
 hotel where met a Syr. Xian who invited me whiskey

on back water from Alephey to Cochran
20

1916 31 Days

20 THURSDAY [20-346]

January

○ 8h 29m A. M. (Greenwich)

~~Arrived Alephey 7 am.~~ This morning: very

Further in camp of Padmanabha the physician to
H. H. of Travancore -

21

January

21 FRIDAY [21-345]

1st Month 1916

1916 31 Days

22 SATURDAY [22-344]

22
January

23
January

only

23 Sunday--3 aft Epiph [23-343]

1st Month 1916

1916 31 Days

24 MONDAY [24-342]

24
January

25
January

Impare

25 TUESDAY [25-341]

1st Month 1916

Conversion of St. Paul

Science College at Banglow

27
January

Banglow - Mysore mines
27 THURSDAY [27-339]

1st Month 1916

1916 31 Days

28 FRIDAY [28-338]

Banglore 28

January

(0h 35m A.M. (Greenwich)

wrote to Tirumandram a Banglore for
Sanskrit Series
Chief Secretary to the Govt.

Secretary to Education & ^{Tirumandram} ~~Armed~~ ^{Dept.}

Banglore.

29

Banglow to Hospital Ry

January

29 SATURDAY [29-337]

1st Month 1916

1916 31 Days

Hyderabad.

30 Sunday—4 aft Epiph [30-336]

30
January

Arrived 7 P. m. Hyderabad

31
January

Hy Daniels

31 MONDAY [31-335]

1st Month 1916

Hyderabad
1916 29 Days

By Jungs for Hyderabad - wadi
1 TUESDAY [32-324]

32
February

Partridge and Pheasant Shooting ends

33
February

Bijapur
2 WEDNESDAY [33-333]

2nd Month 1916

Purification of V. Mary. Candlemas.
Scottish Quarter Day

Bijapur arrived 1-30 p.m.

1916 29 Days

By train from Hoteji to Poma

3 THURSDAY [34-332]

34
February

● 4h 6m P.M. (Greenwich)

4 P.M. arrived Poma from Bijapur camp
at Hoteji

35
February

poem

4 FRIDAY [35-331]

2nd Month 1916

arrived early morn: 7 am.

Drove to Durban - with him to the
Bank when drew \$100 -

Lots of letters waiting. Munnig D.O.

have come back from Bahadur all well.

Called at one or two places - books

Afternoon slept a short time & then
to City proper - a few books at

Vankar's, wa press - their new publi-
cation etc

37
February

6 Sunday—5 aft Epiph [37-329]

Bowling
2nd Month 1916

1916 29 Days

Bonley

7 MONDAY [38-328]

38

February

39
February

Bombay

8 TUESDAY [39-327]

2nd Month 1916

Half Quarter Day

Saw the China Duffists Vases carried
to mess^r. Tullock Chand Shapoorji
by a Coolie in Klinkan Bazaar.

Done last bit of work in Bombay -
am liking it - easy now.
In the eve drove to following temples
with Dwan Chand -
mahatmaxmi or Sankar - fine
view 3 golden faced deities - female.
Dress silver - drive in front of the
the wealthy citizens Bungalow -
visited Lakshmi Narayan temple a
beautiful gem of sculpture. So de-
lightful good face $\frac{1}{2}$ femaleish - most
beautiful hands a true namishing &
preserving dirt it shows on the face.
Very inviting - Bonhomie -
radiating its pleasant rays of joy
& pleasure. Reminded me of perhaps
ancient Greek temples in the heart of
city. People things done 3 in the after-
noon. Then to tram leaders also the
good & beautiful blue faces of deities
are not. Some work of art. My
pleasant picture into which
sent me parcel of brass plate pictures
to Auntie

41
February

Nasik

10 THURSDAY [41-325]

2nd Month 1916

10h 20m p.m. (Greenwich)

The Panda Vahi inscription in Nasik
 ✓ ११ ५ ३ ० ४ ० ४ ५ ४ ५ ३ ० ५ ४ ६ ४ ४
 २ ४ ० ५ ० ६ २ ४ ५ २ ० १ ४ ६ ० ६ २ ४
 ५ ० ३ ४ ४ ० ३ ० ४ ० ४ ० ४ ५ ४ ३ १ ६ २ ५
 January 1925

In pandus handwriting

राधा राम पिंडी दास का बेटा दुनी चंद का
 पेटा नारायण दास का पडपेटा
 बेटा बृंढा मल चाचा साहा राज का
 बेटा गंग राम का बेटा २ खड़ी हांडे
 का: (बाशी) लखंडार त. (तथा), सामरत
 सर दुलो का कटराया /

انت رام والرب اللطيف ابرویت متعل بهر کالی دردی کونبر 1528
 again another inscription

नवनीध राय पिंडी दास का बेटा नारायण
 नारायण दास का पेटा साता (नव-
 नीध राय की) सेनी वाई हांडेल हांडार

his mom: has "pinda" (mother) done in Indaveri
 a name conception indeed to be united with mother
 Visited the Pandav Dera Caras this afternoon
 life size - Colonel Pandav, Celas and Viharas
 halls. Jain - Gandhiji Caras near Viharas
 putting up at Kapthi Sharnsule. Dr. Balaji
 a Washara Ram in charge.

Left Nask 12-45 train & got at
Nannas 3. on to Bhurnal & Chan-
suah when changed for A Jachber
offers etc etc -

43
February

Khamoul - Uffain - a Day to
12 SATURDAY [43-323] 2nd Month 1916

Visit to Uffain - the old city ruins very
interesting. Whatever I saw there was of
good workmanship in the shape of
old sculptures. Bought with me one statue
from Bhastrikari Caves. Siva & Parvati
wh: piece is pretty old. perhaps from
Bhatnari time

Mahakuli - the mandras

lots of modern traders.

wonder pretty - the description of them
by Kulidas - (eyes) remind me of

Ajmere
1916 29 Days

13 Sunday - 6 aft Epiph [44-322]

44
February

When got at 6-45 evening.

Dinner ^{from} Indian style with
Gauri Shankar Bar - eat - saw
Bhendarkar - an elderly man
Aparthilal Roy from Goud of whom
I was under the impression that
H. B. J. did not smoke or take
flesh - but hearing that he is
wondered not to be... to like him
all the more for that.

45
February

Amere

14 MONDAY [45-321]

2nd Month 1916

Qanawali Singers from Hyderabad -

U, U, U, U, 3, 3, 3, 3

U, U, U, U, 3, 3, 3, 3

Grand effect on me - the whole thing
Company also select all singers

1916 29 Days

Ajmere

15 TUESDAY [46-320]

46

February

Dined with Bhendarkar

Arrived 11.33. from Amner

Stayed with Brijmohanlal
vice principal School for B
Jaipur

Great sorrow at the prospect of loss of
my camera bag. There seems to be
probability of its existence altogether

Went afternoon and station master & went
to Basipuri & Rewari to enquire if it is
there.

Telegraphed to A.B. Sarden

Jaipur

1916 29 Days

17 THURSDAY [48-318]

48

February

49
February

18 FRIDAY [49-317]

2nd Month 1916

1916 29 Days

19 SATURDAY [50-316]

50
February

○ 2h 29m A.M. (Greenwich)

51
February

20 Septuagesima Sunday [51-315]

2nd Month 1916

1916 29 Days

21 MONDAY [52-314]

52
February

53
February

22 TUESDAY [53-313]

2nd Month 1916

A number of blank pages follow,
which have not been photographed.

1916 29 Days

23 WEDNESDAY [54-312]

54
February

109
April

18 TUESDAY [109-257]

4th Month 1916

○ 5h 8m A.M. (Greenwich)

Hilary Law Sittings end

Arrived at 19th Apr

wrote to

W. Booth Granley
 undersecretary to the Govt of India
 Home Dept. Simla.

Refrat will be seen from the id herein
 that but will as soon as possible
 send you if found. Tomorrow oblige
 to give up the search. Fear may
 have gone to the East with him
 & other objects. - Am always travels
 in search of him & other objects
 etc & in transit in one of the way
 places was to lose them.

111
April

20 THURSDAY [111-255]

4th Month 1916

Maundy Thursday

1916 30 Days

21 GOOD FRIDAY [112-254]

112
April



113
April

22 SATURDAY [113-253]

4th Month 1916

Easter Even

HAS STOOD THE PUBLIC TEST OVER 35 YEARS.



PATENT

"STOUT BUFF" COPYING PAPER

THIS REGISTERED TRADE MARK IS NOW WATER-MARKED ON EVERY SHEET.

AN EXCELLENT SUBSTITUTE FOR WRITTEN DUPLICATES,
SAVING MANUAL LABOUR.

COPIES ALMOST ANY INK (COPYING OR OTHERWISE)
ALSO COPIES CORRESPONDENCE RECEIVED, WHICH HAS
BEEN PREVIOUSLY COPIED (IF SUFFICIENTLY DAMPED)
TAKES THE WATER QUICKLY. DOES NOT READILY TEAR.

Per PACKET: Quarto, 1/-; Foolscap, 1/-

Per REAM: Quarto 4/6; Foolscap, 6/6

BOOKS:—

Quarto, 500 pages, 8/-

F'cap, 500 pages, 11/-

PLEASE TO TEST ANNEXED HALF SHEET.

SOLD

BY ALL

STATIONERS

IN TOWN OR COUNTRY.

Wholesale only of the Manufacturers,
JAMES R. CROMPTON & BROS., Ltd., BURY and LONDON.

Wholesale and Retail of
WHITEHEAD, MORRIS & Co., Ltd., 9/10, Fenchurch Street, London, E.O.
And at Alexandria, Cairo, Cape Town & Johannesburg.

Please to Test this Half Sheet.

DON'T USE TOO DAMP FOR NEWLY WRITTEN INK.

INSTRUCTIONS.—For "Copying Ink" recently written thoroughly remove all superfluous moisture; when more than one copy is required, *take them separately*, making each succeeding one a little damper, and pressing longer. In this manner from four to six copies may be taken.

For "Copying Ink" which has been some days written, or copied before, or for "Non-Copying Ink," *damp well on both sides and press for a few minutes. One and sometimes two copies can be taken in this way.*

For Copying *Type-written documents*, it is advisable to use damping sheets instead of the brush.

1916 30 Days

23 Easter Day [114-252]

114
April

St. George

115
April

24 Easter MONDAY [115-251]

4th Month 1916

☾ 10h 38m P.M. (Greenwich).
Bank Holiday

1916 30 Days

25 Easter TUESDAY [116-250]

116
April

St. Mark, Evan.
Cambridge Easter Term begins

117
April

26 WEDNESDAY [117-249]

4th Month 1916

Oxford Easter Term begins

with

119
April

28 FRIDAY [119-247]

4th Month 1916



121
April

30 Low Sunday - 1 aft Easter [121-245]

4th Month 1916

1916 31 Days

1 MONDAY [122-244]

122
May

SS. Philip and James. Bank Holiday,
Scotland. Holiday, Stock Exchange.
Royal Academy opens

123
May

2 TUESDAY [123-243]

5th Month 1916

Easter Law Sittings begin.
● 5h 29m A.M. (Greenwich)

A number of blank pages follow,
which have not been photographed.

1916 31 Days

3 WEDNESDAY [124-242]

124
May

171
June

19 MONDAY [171-195]

6th Month 1916

Deed registered today concerning piece of land
& the house of Gujran adjoining my Tavala.

1916 30 Days

20 TUESDAY [172-194]

172
June

Trinity Law Sittings begin

[Faint, illegible handwriting]

173
June

21 WEDNESDAY [173-193]

6th Month 1916

1916 30 Days

22 THURSDAY [174-192]

174
June

Corpus Christi. (1h 16m P.M. (Green-
wich). Coronation King George V., 1911

175
June

23 FRIDAY [175-191]

6th Month **1916**

Prince of Wales born, 1894

1916 30 Days

24 SATURDAY [176-190]

176
June

St. John Baptist. - Midsummer Day.
Quarter Day. Cambridge Easter Term
ends

A number of blank pages follow,
which have not been photographed.

189
July

7 FRIDAY [189-177]

7th Month 1916

1916 31 Days

8 SATURDAY [190-176]

190
July

11h 55m A.M. (Greenwich).
Oxford Trinity Term ends.
Fire Insurances expire

Recd. Decease amount Rs 502/- with interest.
from Ratan chand Thakur Das Munshi.
The whole amount being Rs 520/8/-
plus.

He paid this sum on the 17th day appointed
for auction.

Have been greatly worried & bothered
one day ate porries and no meal taken.
do not in the Court.

Greatly distressed & depressed in this main
account.

191
July

9 Sunday - 3 aft Trin [191-175]

7th Month 1916

Recd notice from Municipal Committee
about the plot of land ~~to~~ bought from
Griffiths. Manly and his brother

greatly put out on account of the
land being claimed by municipality

1916 31 Days

10 MONDAY [192-174]

192
July

[Faint, illegible handwriting]

193
July

11 TUESDAY [193-173]

7th Month 1916

1916 31 Days

12 WEDNESDAY [194-172]

194
July



195
July

13 THURSDAY [195-171]

7th Month 1916

Sent £10/- cheque to
Maurice Tanze - Bills in settlement
of her account. According to
her letter of June 14th 1916

197
July

15 SATURDAY [197-169]

7th Month 1916

○ 4h 40m A.M. (Greenwich)

1916 31 Days

16 Sunday—4 aft Trin [198-168]

198
July

199
July

17 MONDAY [199-167]

7th Month 1916

lent money over Rs 15/- to
Lakshmi Narayan
Sanganer Gate

Rasta Kundi Garas ka Bhairav
Rambala ka Makan -
Jaipur City

for Copper leaf and certain mss
He was asking Rs 30/- for the lot -

Hundi for 1200/- matured
He is putting the amount somewhere
also through the Dalal Gursalai

201
July

19 WEDNESDAY [201-165]

7th Month 1916

Sriolla will look a great bother
for me a we found out the file who
proved that the laws in plot when
in Gujran where I wish to have a
geochi made belongs to me.
very old files were dug out.

Today it has been completed that
the plot of Lewis and Davis Sullivan
belongs to me.

permission to Lewis granted by the
Secretary today. Great success.

Left Hamilton today for Syracuse
by the 8-25 p.m. train for Rowan

203
July

21 FRIDAY [203-163]

Ropuri Murree

7th Month 1916

(11h 33m P.M. (Greenwich)

Arrived Pindi 8-15 Am. had a few nights' rest. Star on station was Rai Bahadur Bishan Das in charge. Comd. of ward of Sindhu Mohan Singh and Sohan Singh drove straight to their garden. Baradari Breakfast.

N. D. Radhakrishnan whose engaged - motor car for Rs 175/- to Simlaur

left Pindi at 5 P.M. reached Murree in 2 hrs & 5 minutes.

Dr. D. D. Sharma M.A. K.L.H. met with me with friend Shauq. Learning -

Very quiet life. Great noise still.

in open way he said he did not like such forests who were found or whom he had to hunt as forest.

1916 31 Days

Murree - Gurli

22 SATURDAY [204-162]

204
July

Slept Murree - raining hard this morn.
for 2 to 3 hrs it rains - no work
we left murree by motor car at
12 noon for Drungat

near Gurli met kharail by Chana
walked to Dak Bungulw.

Tea - Dinner here - Very comfortable

Bungulw -

Left & Left

205
July

Gurli - Daramula - Springs
23 Sunday - 5 aft Trin [205-161] 7th Month 1916

Left Gurli this morn. at 8.
Daramula at 11-30 AM luncheon.
old re collector's bridge Mr. Coins
old beam -

arrived Springs at 2. There met
Duguid's shawl manufacturer
who has already equipped a boat for
us. Stepped in boat from the Motor-car.
Clean bright and nice boat.
Pohuent was also there to meet
us.

Boat moved slowly on toward Springs
we were at the old bridge.

1916 31 Days

24 MONDAY [206-160]

206
July

207
July

25 TUESDAY [207-159]

7th Month 1916

St. James, Ap.

1916 31 Days

26 WEDNESDAY [208-158]

208

July

The page contains a grid for a calendar. It has 31 columns and 26 rows. The first column is a narrow vertical strip on the left side. The remaining 30 columns are wider and are separated by vertical lines. The rows are separated by horizontal lines. The grid is currently empty.

209
July

27 THURSDAY [209-157]

7th Month 1916

Booklet - Dinner at Bhai Sant Singh
month of Jula Sain Day.

Deposited Net 300/- with Ram Kattan

Dalit-

slit books from Ruyakand 35 - -

persian books etc 36 8

from Maulvi Salamuddin 13

for half dozen 100 - -

" " " 50

211
July

29 SATURDAY [211-155]

7th Month 1916

Items bought

During August 1916

Bhugarchakrin	25	-	-
one Bhury & 3 Mukalins from Kanawar	12		
Yagnamella & Vishnu Sarita "	12		
Gurumukhi lot for	4		
Hindi Chikitsa - Gantias	6		
Bhury tantre leaves & few the from above man	2		
Kulhasanikapur	9		
Perisim by hand	3		

1916 31 Days

30 Sunday—6 aft Trin [212-154]

212
July

● 2h 15m A.M. (Greenwich)

213
July

31 MONDAY [213-153]

7th Month 1916

Trinity Law Sittings end

1916 31 Days

1 TUESDAY [214-152]

214
August

⌋ Lammas Day. Scottish Quarter Day

215
August

2 WEDNESDAY [215-151]

8th Month 1916

1916 31 Days

3 THURSDAY [216-150]

216
August

The page contains a grid for a calendar. It has 31 columns and 15 rows. The grid is mostly empty, with a few faint marks. The right edge of the page shows the binding of the book, which is decorated with a colorful pattern.

217
August

4 FRIDAY [217-149]

8th Month 1916

War declared between Great Britain
and Germany, 1914

A number of blank pages follow,
which have not been photographed.

with a letter to
 Kailas Bhatt Handoo & his
 brother Nandram Handoo
 Ranawari W. Zorolankar bungalow

سریندر کٹر - پرنسپال صاحبہ صدر قتل - محمد حسین
 ذلت مولوی سید ادریس نجفی - سید سکندر
 پرنسپال -

223
August

10 THURSDAY [223-143]

8th Month 1916

1916 31 Days

11 FRIDAY [224-142]

224
August

Half Quarter Day

225
August

12 SATURDAY [225-141]

8th Month 1916

Grouse Shooting begins

1916 31 Days

13 Sunday—8 aft Trin [226-140]

226
August

○ 0h 0m P.M. (Greenwich)

227
August

14 MONDAY [227-139]

8th Month 1916

A number of blank pages follow,
which have not been photographed.

St. Bartholomew, Ap.

در کمال صفت فرزند ^{شاهی} گاشی کول صلب
 کلمه پرنیایر صبا قدل سر کتر
 man who has sin or may ^{him}

به تیار فرزند ^{شاهی}
 گامگار

Gamgar Chaud

Bukhro

c/o Shricler paudai

~~Shrihari~~ Vashnavi
 Ganish Ghat
 Haba Kadai
 Shiragar.

with DD

2 ~~work~~ working lois

1 - worked lo

2 patterns

2 removers

exp: 31st - 1511

for hatching

also are woven curved labels

also some paper machine work

239
August

26 SATURDAY [239-127]

sth Month 1916

1916 31 Days

27 Sunday - 10 aft Trin [240-126]

240
August

241
August

28 MONDAY [241-125]

8th Month 1916

● 5h 25m P.M. (Greenwich)

Crewit 200

Tickets	17	6
motor	92	5
Ryom fuel	1	-
link	1	4
waterpump	1	8
fuel	6	8
Rafmanl bus	27	11
fuel cab:	11	
manovi books	12	-
Ranawans bus	27	3
fuel cab:		

197 13

Crewit	200-0
Debit	<u>197-12</u>
Balance Bs	2-8

Great 200 D.D.

1 Koi	6	10	
1 Nanda	5	12	
1 Koi	7	8	
one doz: glass cloth	1	6	
2 Table cloths	4	2	
papier mache	9	4	
Safa and Bort polish	1	2	
V. p. books	7	-	
paties (2)	12	-	
Nanda	5	4	
one worker Koi	6	12	
Fard	27	8	
Raphanel 26th Sep:	15	-	
for books			
Sarmerani	2	12	
gun	1	-	
Zira Guakhi	4	8	
Choga	50	5	3
for Fard repairs	6	13	6
fuel & xham	9	1	6
panoil-fu m	5	-	-
menubin horseboat	6	2	
Cash	10	-	
Leather work	21	12	
	<hr/>		
	22	6	10 3
	2	2	
	<hr/>		
	224	8	3

I owe to DD →
this day 29th

سری سنجی را چون دلد پرگانه در البدن
بسیار قدر مدنی، سری سنجی را

Bhury big ms	42
Gurankhi ms	2
Bhury small form	3
Gurankhi wals	

Last batch of bees from Rupkar	15 -
-----------------------------------	------

245
September

1 FRIDAY [245-121]

9th Month 1916

Partridge Shooting begins

1916 30 Days

2 SATURDAY [246-120]

246
September



247
September

3 Sunday—11 aft Trin [247-119]

9th Month 1916

1916 30 Days

4 MONDAY [248-118]

248
September

The page contains a large grid for a calendar. It has 30 columns and 30 rows. The first column is a narrow vertical strip on the left side. The remaining 29 columns are wider and are separated by thin vertical lines. The rows are separated by thin horizontal lines. The grid is currently empty.



249
September

5 TUESDAY [249-117]

9th Month 1916

3 4h 27m A.M. (Greenwich)

A number of blank pages follow,
which have not been photographed.

Ember Week

Arrive Bairnath
 Turanora Tirathi the Swamin in Bairnath

$\frac{1}{2}$ mile $\frac{1}{2}$ SP to $\frac{1}{2}$ mile $\frac{1}{2}$ SP
 near neri darwaza
 man who met us at Palampur.

Benjmin

..
a
not see

263
September

19 TUESDAY [263-103]

9th Month 1916

(5h 35m A.M. (Greenwich)

Bargmult

Ember Day

Bearpult

265
September

21 THURSDAY [265-101]

9th Month 1916

St. Matthew, Ap.

Bairnath

1916 30 Days

22 FRIDAY [266-100]

266
September

Ember Day

Barfult

267
September

23 SATURDAY [267-99]

9th Month 1916

Ember Day

Jim Boyzalki

Sent cheque Rs 804-5 in
full settlement of my account
with Barga Das a Diwan Chaw
This account was outstanding
since marriage - Bombay acct
also one deposit sent to Ratan
Soni at New York - some shares
to Southern India. ~~Went to~~
Kashmir account also settled -
Cigar account also settled.

Sent cheque to Vern for business
purposes - took this bill the
last Jan. required -

1916 30 Days

24 Sunday—14 aft Trin [268-98]

268

September

Bayport

269
September

25 MONDAY [269-97]

9th Month 1916

Left Benwith for the Bin

Shehn

271
September

27 WEDNESDAY [271-95]

9th Month 1916

● 7h 34m A.M. (Greenwich)

Inthunfri

1916 30 Days

28 THURSDAY [272-94]

272
September

Jewish Year 5677 begins

Sil Chaswani

273
September

29 FRIDAY [273-93]

9th Month 1916

St. Michael and All Angels. Michaelmas
Day. Quarter Day

Kuhn

Kulu

275
October

1 Sunday—15 aft Trin [275-91]

10th Month 1916

Cambridge Michaelmas Term begins

Kuhain

1916 31 Days

2 MONDAY [276-90]

276
October

Pheasant Shooting begins

manuli

277
October

3 TUESDAY [277-89]

10th Month 1916

manali

1916 31 Days

4 WEDNESDAY [278-88]

278
October

11h 1m A.M. (Greenwich)

Manuli

279
October

5 THURSDAY [279-87]

10th Month 1916

Dividends due at Bank

~~Manuli - Kaban Manuli~~
Manuli - Kaban

Kuhroni - Kulu

281

October

7 SATURDAY [281-85]

10th Month 1916

hulu-

1916 31 Days

8 Sunday—16 aft Trin [282-84]

282
October

Rulu -

Prakram Singh of Merchant
+ Gardens the place we had intended to
buy.

Had tea with Prakram Singh -

Heard news of the Gurkha Subedar's
death.

1916 31 Days

Bhutan - Whaka - Jogle
284
10 TUESDAY [284-82]

October

Oxford Michaelmas Term begins

285
October

Bhubar - Doleli pass - Katarah

11 WEDNESDAY [285-81]

10th Month 1916

○ 7h 1m A.M. (Greenwich)

Katarah rocky - damp.

Family of Brahaman ill then - girl well
dressed - Cooked. gave medicine to my
nephews.

Katambin -

1916 31 Days

12 THURSDAY [286-80]

286
October

Michaelmas Law Sittings begin

287
October

Shelm

13 FRIDAY [287-79]

10th Month 1916

1916 31 Days

Bairnath —→ Palampur 288

14 SATURDAY [288-78]

October

Fire Insurances expire

Bairnath left 11 am. for Palampur
& arrived there at 2 P.M. ~
the same house for

motor from Palampur at 10 AM 11 o'clock at Kanpur
3-30 at Pathankote

Amintar
→ arrives here this eve from Kulu

Ø R.K.

1916 31 Days

16 MONDAY [290-76]

290
October

Quarter Sessions Week

[Faint, illegible handwriting in pencil, possibly bleed-through from the reverse side of the page.]

291
October

17 TUESDAY [291-75]

10th Month 1916

1916 31 Days

18 WEDNESDAY [292-74]

292
October

St. Luke, Evan.

293
October

19 THURSDAY [293-73]

10th Month 1916

(1h 9m A.M. (Greenwich)

1916 31 Days

20 FRIDAY [294-72]

294
October

295
October

21 SATURDAY [295-71]

10th Month 1916

Trafalgar Day (1805)

A number of blank pages follow,
which have not been photographed.

● 8h 37m P.M. (Greenwich)



O
To secure th

A

LE

A su
Full particulars of a
to CASS

1916 31 Days

26 THURSDAY [300-66]

300
October

● 8h 37m p.m. (Greenwich)

ORDER FORM TO BOOKSELLER.

To secure the same Edition of Letts's Diary for next year, please forward this slip to your Bookseller in October.

Al

191

BOOKSELLER.

Please send to my address

LETTS'S DIARY, No. 100, PRICE 4/-.

Name _____

Address _____

A superior edition is also prepared (No. 8), strongly bound in cloth, price 6/6.

Full particulars of all editions of Letts's Diaries will be found in the Catalogue, sent post free on application to CASSELL & COMPANY, LIMITED, London, E.C., New York, Toronto and Melbourne.

299
October

25 WEDNESDAY [299-67]

10th Month 1916



1916 31 Days

26 THURSDAY [300-66]

300
October

● 8h 37m P.M. (Greenwich)

301
October

27 FRIDAY [301-65]

10th Month 1916

The page contains a grid of light blue lines. The grid is composed of 12 vertical columns and 20 horizontal rows. The first column is significantly wider than the other 11 columns, which are of uniform width. The grid is positioned below a double-line horizontal header and extends to the bottom and right edges of the page.

1916 31 Days

28 SATURDAY [302 64]

302
October

SS. Simon and Jude.
Mohammedan Year 1335 begins

303
October

29 Sunday—19 aft Trin [303-63]

10th Month 1916

News of Sahib Ditt's death in a motor
accident near Dornal. Shocking! Chohan

1916 30 Days

1 WEDNESDAY [306-60]

306
November

All Saints' Day.
Holiday, Stock Exchange

307
November

2 THURSDAY [307-59]

11th Month 1916

5h 51m p.m. (Greenwich)

Ann today on her 2000⁰⁰ - invested in Horses.

Write to her again
63 Selborne Road
Southgate N
London

[Faint, illegible handwriting in pencil, possibly a date or a short note.]

309
November

4 SATURDAY [309-57]

11th Month 1916

1916 30 Days

5 Sunday—20 aft Trin [310-56]

310
November

Gunpowder Plot

311
November

6 MONDAY [311-55]

11th Month 1916

1916 30 Days

7 TUESDAY [312-54]

312
November

A number of blank pages follow,
which have not been photographed.

Deed reg^d today for mortgage
executed by Diwan Chand Kaur Dikash
in my favour -

Mutfeh name shop Kalin Charh
I wish for Rs 4000/- at 12%
at 12. 12. m. p. Cent.

327
November

22 WEDNESDAY [327-39]

11th Month 1916

1916 30 Days

23 THURSDAY [328-38]

328
November

The page contains a large grid for daily entries. The grid is 30 columns wide and 30 rows high. The columns are numbered 1 through 30 at the top. The rows are numbered 1 through 30 on the left side. There are three binder holes on the left edge of the page, corresponding to the first three rows. The grid is currently empty.

329
November

24 FRIDAY [329-37]

11th Month 1916

1916 30 Days

25 SATURDAY [330-36]

330
November

● 8h 50m A.M. (Greenwich)

331
November

26 Sunday—23 aft Trin [331-35]

11th Month 1916

A number of blank pages follow,
which have not been photographed.

1116-4-5
 49-7-3

 1165-11-8
 1155-12-0

 119-14-8

 1155

1155
 Hai van 1.
 pan
 jalan

Tanjore to

Medura Dist, Cash, Cochie:

35-00

Rameswaram Island

25-00

Rameswaram to Medura

$$\begin{array}{r}
 5-12 \\
 1-2 \\
 2-0 \\
 1-0 \\
 \hline
 9-14
 \end{array}$$

Madura - may mainyachi

$$\begin{array}{r}
 5-5- \\
 0-15-0 \\
 2-4-0 \\
 1-8-0 \\
 \hline
 10-0-0
 \end{array}$$

mainyachi - Pullan

$$\begin{array}{r}
 7-15 \\
 1-6 \\
 2-4 \\
 1-4 \\
 \hline
 12-13
 \end{array}$$

$$\begin{array}{r}
 27-15 \\
 22-3 \\
 \hline
 5-12
 \end{array}$$

$$\begin{array}{r}
 4-1 \\
 3-5 \\
 \hline
 -12
 \end{array}$$

$$\begin{array}{r}
 31-8 \\
 463-1 \quad 7-6 \quad 185-15 \\
 441-12 \\
 25-0 \\
 1-3 \\
 \hline
 \end{array}$$

$$\begin{array}{r}
 931-0 \\
 131-8 \\
 \hline
 \end{array}$$

$$\begin{array}{r}
 962-8 \quad 76-185-15 \\
 185-15 \\
 7-6 \\
 \hline
 \end{array}$$

$$\begin{array}{r}
 1155-13 \\
 \hline
 \end{array}$$

*not in 1-2
 per
 jalan*

$$\begin{array}{r}
 1116-4-5 \\
 49-7-3 \\
 \hline
 \end{array}$$

$$\begin{array}{r}
 1165-11-8 \\
 1155-13-0 \\
 \hline
 \end{array}$$

$$\begin{array}{r}
 119-14-8 \\
 \hline
 \end{array}$$

1916 31 Days

9 SATURDAY [344-22]

344
December

○ 0h 44m P.M. (Greenwich).
Black Game and Grouse Shooting ends

345
December

10 Sunday—2 in Advent [345-21]

12th Month 1916

1916 31 Days

11 MONDAY [346-20]

346
December

347
December

12 TUESDAY [347-19]

12th Month 1916

1916 31 Days

13 WEDNESDAY [348-18]

348
December

Just Jarouh Das
Omami's mystery of
Wilson p/w

1916 31 Days

15 FRIDAY [350-16]

350
December

351
December

16 SATURDAY [351-15]

12th Month 1916

1916 31 Days

17 Sunday—3 in Advent [352-14]

352
December

(6h 6m P.M. (Greenwich).
Ember Week

353
December

18 MONDAY [353-13]

12th Month 1916

Oxford Michaelmas Term ends

1916 31 Days

19 TUESDAY [354-12]

354
December

Cambridge Michaelmas Term ends

A number of blank pages follow,
which have not been photographed.

355
December

20 WEDNESDAY [355-11]

12th Month 1916

Ember Day

Michaelmas Law Sittings end.
St. Thomas, Ap.

Sent one cheque £ 2-0-0 to
the National Bank of India &
London. This was as dividend
from the Tallent Day Co. for the
year ended 30th June 1916
Cheque bore no 920

357
December

22 FRIDAY [357-9]

12th Month 1916

Ember Day

1916 31 Days

23 SATURDAY [358-8]

358
December

Ember Day

359
December

24 Sunday—4 in Advent [359-7]

12th Month 1916

● 8h 31m P.M. (Greenwich)

1916 31 Days

25 MONDAY [360-6]

360
December

CHRISTMAS DAY. Quarter Day

361
December

26 TUESDAY [361-5]

12th Month 1916

St. Stephen, M. Boxing Day
Bank Holiday

1916 31 Days

27 WEDNESDAY [362-4]

362
December

St. John, Evan.

A number of blank pages follow,
which have not been photographed.

Dr.

JANUARY, Cash Account.

Cr.

		Balance	117	6	4
Exhurs	1218	Cash de London rec'd on Feb: 15 th	114	2	0
			<hr/>		
			1231	8	4

[Faint handwritten notes and signatures on a piece of paper pasted over the ledger entry. The text is mostly illegible but appears to be a receipt or acknowledgment.]

4
0
4
1916

National Bank of India Limited

(INCORPORATED IN THE UNITED KINGDOM)

All Letters to be addressed and
Remittances made payable to

NATIONAL BANK OF INDIA, LD.

BOMBAY.

Telegraphic Address

"NATIONAL"

POST BOX NO 141.

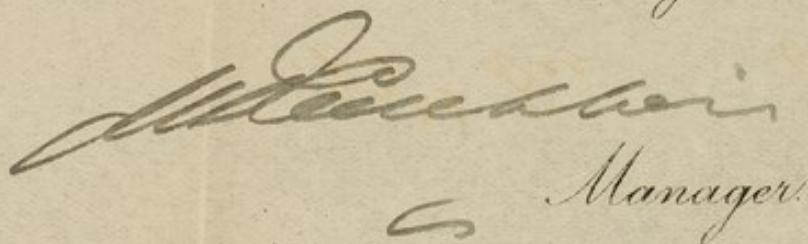
Bombay 23rd Dec 1916

Dr Pairsa Hall.

Dear Sir,

We beg to intimate that your current deposit account has this day been credited with Rs 1114-2/- equivalent to $\text{@ } 1/4 \text{ s } / 32$ of £ 75/- paid in by our London office received from Mess Burroughs Wellcome & Co.

Yours faithfully,



 Manager.

Dr.

JANUARY, Cash Account.

Cr.

Balance			117	6	4
Expenses	1218	12 ¹¹	0		
Cash & bank rec'd on Feb: 15 th			1114	2	0
			<hr/>		
			1231	8	4

Recpts 1231-8-4
 Expenses 1218-11-0

 Balance 12-13-4

Amities
 24 Michael 1916
 for Jan:

Dr.

FEBRUARY, Cash Account.

Cr.

Expenses	1077 8	Balance	12	13	4
		25th month Bank	1114	1	11
			<u>1126</u>	<u>15</u>	<u>15</u>
			1126	15	3

Repts 1126-15-3
 Exp: 1077-8-0

Balance Rs 49-7-3

Amited 21st April
 for Feb: 1916

Dr.

MARCH, Cash Account.

Cr.

Post
Expenses

1155 13 0

25th
April

Balance on
hand

Cash & ledger

49 7 3

1116 4 5

1165 11 8

Receipts 1165-11-8

Exp: 1155-13-0

Balance 9-14-8

for May 19th 1966
for month 1966

Dr.

APRIL, Cash Account.

Cr.

Expenses	100778	Balance on hand	9148
		24 th May	Cash Receipts
			11187
			<hr/>
			112858

Recd 1128-58
 Excn 1007-14-0

Balance 1207-8 .

Balance 28th June 1916
 for April 1916

Dr.

MAY, Cash Account.

Cr.

Salaries	1095 8 0	15 th Balance ahead	120 7 8
		June Cash Dr. head	114 2 -
			<hr/>
			1234 9 8

Recd 1234-9-8

Exp: 1095-8-0

Balance 139-1-8

Balance June 28th 1916
for May 1916

Dr.

JUNE, Cash Account.

Cr.

			Balance on hand	139	1	8
			Telegraph Remit.	742	12	
Expenses	1226	8	-0	1116	4	5
				<hr/>		1255 6 1

Rec'd 1255-6-1

Exp: 1226-8-0

28-14-1

Balance

Sum of
July 30th 1916

Dr.

JULY, Cash Account.

Cr.

		Balance on hand	28	14	1
		W ^H - Teleg. remit.	742	12	
Edmund	1693-12-6	ansg: 17 th Cash & Indos	1118	7	1
			<u>1890</u>	<u>1</u>	<u>2</u>

Ret: 1890-1-12

Exp: 1693-12-0

Balance 196-5-2

Baynath
Feb: 21st 161b

Dr.

AUGUST, Cash Account.

Cr.

Expenses	1137	11	0	Balance on hand	196	5	2
				44th 21st Cash on hand	1116	4	5
					<u>1312</u>	<u>9</u>	<u>7</u>

Repts 1312-9-7
 Exhns 1137-11-0

 Balance 174-14-7

Under
 oct: 7th 1916

Dr.

SEPTEMBER, Cash Account.

Cr.

				Balance on hand	174	14	7
Expenses	1179	14	28 th Oct.	Cash Dr. hand	1116	4	5
			2 th Oct.				
					<u>1291</u>	<u>3</u>	<u>-</u>

Rept 1291 - 3
 exp: 1179 - 14
 Balance 111 - 5

for Nov: 17th 1916
 for Sept:

Dr.

OCTOBER, Cash Account.

Cr.

		now.	Balance on hand	111	5
Receipts	1225 7	27 th ₁₆	Cash on hand	1114	2 -
Expenses	1147 8				
				1225	7

Rec^d 1225-7
 Exp^d 1147-8

 77-15

Dec: 19th 1916
 for balance

Dr.

NOVEMBER, Cash Account.

Cr.

Expenditure 1295 0

Balance on hand	77	15	-
Dec: 27 th Cash & Lnds	1114	2	-
	1192	1	
Jan: 6 th As Cabled		13	
5 th by Post remittance from London	1037	13	24
	2229	14	4

Recd: 2229-14-4

Exp: 1295-0-0

Balance 934-14-4

Balance
Jan: 29th 1917
for Nov: 1916

Dr.

DECEMBER, Cash Account.

Cr.

Jan 6th ~~received~~ for
£ 70 for
~~settling~~

~~1077 13 4~~

Balance on hand 934 14 4

Jan 27th 1917 Cash from donor 1095 - 10

Cash on hand 1999 - -

2029 15 2

24/15 2029-15-2

exp: 1999-00

Balance 30-15-2

Leitham
Feb: 19th 1917
for acc:

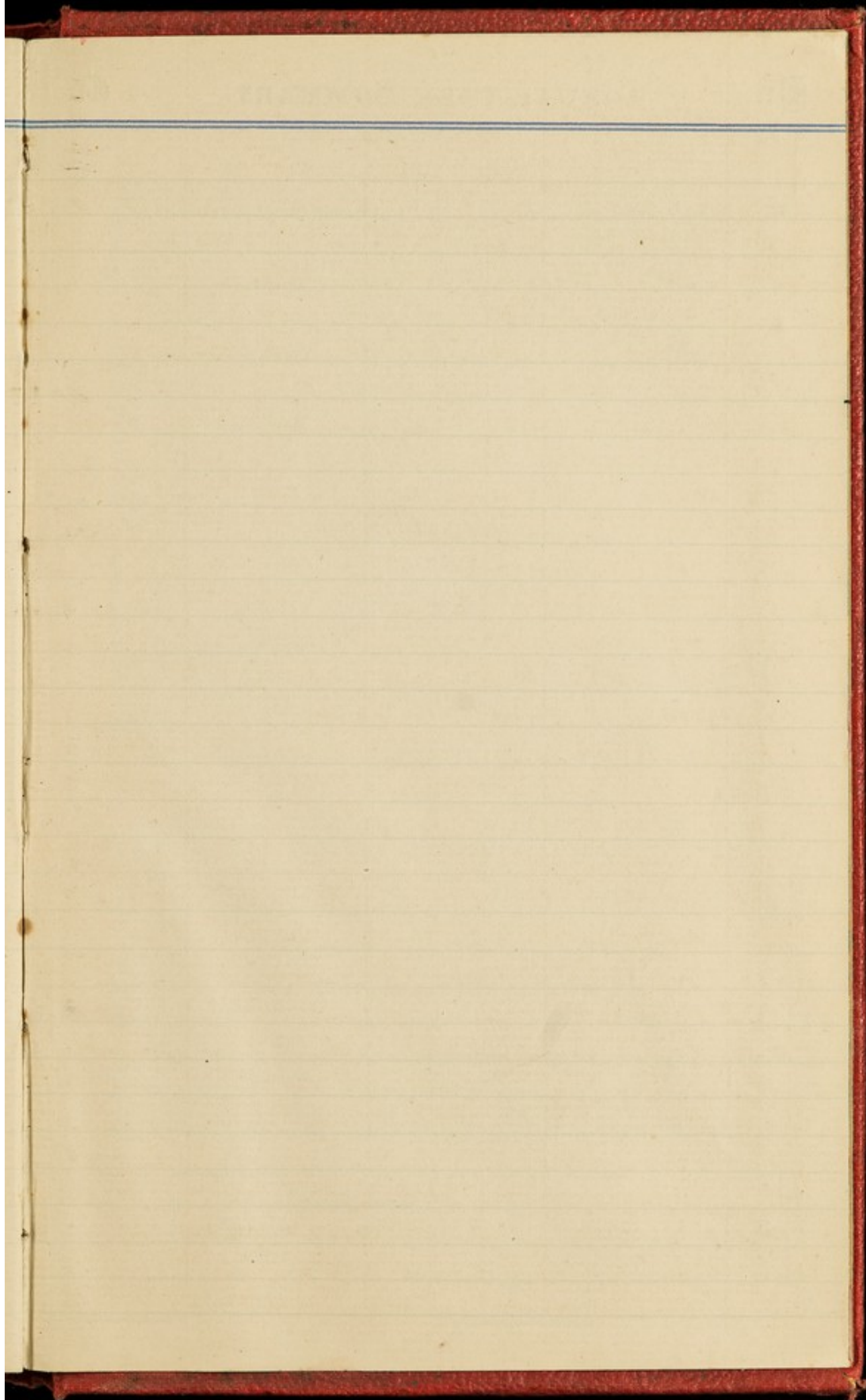
Articles bought during S. Indian Tour

Madras Journal figures & printed list	34-
Kumbakonam Katingi	220-00
Packing at Madras - other expenses	15-00
agents' fee	5-00
Madras list from artist	80-00
" " " from Pandhaji	2-00
Tiruvannam Brass	7-00
Madras for printed books in advance	10-00
" " for advertisement "	10-00
Madras gold, Cotta clothes	25-00
Tiruvandrum Shara Droni yantri	50-00
friction - motor	2-8-0
At " " for above carriage	3-00
Dnyanesh Brass	35-00
Sunnie	5-00
Bangalore Fountain pen	13-12-0
Dharmakhyagan	4-8-0
Tiruchur books printed by Madras	
Tiruvandrum Series	
Tiruvandrum Books & instruments	
from a Vaidya also one ms	
Hyderabad Arabic - Persian	
ms, printed books	55-00
one picture, garwi	4-8-0
Carriage at Amritsar for Katingi	
Donna ms in Beza	2-00
picture Krishna kissing Radha	1-00
Aleppi old flower pot dharti	5-00
Books from Tarapuravale ?	
Lan's Arabic lexicon	75-00
Schmitt's German dictionary	11-4-0

675

340

Raghuvaran	3-12-0
Books from Missy Dandey	
Srimad Bhagavat, Telugu's Pili, Persian Torki name Kallaji Hindi grammar, Waring's treat: medicine History of the Libanhu, Chakar Magalu Oriental Interschool	25-00
Tricunya yadavice books (his own)	5-00
Pictures prints	37-12-0
Old China jars Duffisti	25-00
Packing etc for above	2-40
3 pairs Bundas	35-00
Hair Clippers for R.K.	28-00
Hat - blouse for Mammai	13-00
Bhattikavagam 1-V. Kale	1-12-0
Venkateswar books 4 in no.	7-12-0
Amber	6-00
Dauze	3-00
one picture of Hindu temple	1-80
Packing etc for above	3-80
1kt frame for photo	2-80
4 palm leaf books from Pona Dr Desai one big folio Malabar & others Tamil, Telugu	
Stone + case	6-00
Packing - Bandana etc	15-00
Carriage	20-00
Boats	5-00
Cotton, Rummals	12-00
Shaktishet mercury one Tola	
one Hindi Dasa punkt one from Chandrashe -	
one Siva of Parvati for Bhadrakari	
Came in vijain - Babaji 97-161-	



Dr.

ANNUAL CASH SUMMARY.

Cr.

Balance from last year

Balance from last year

J

January

January

February

February

March

March

April

April

May

May

June

June

July

July

August

August

September

September

October

October

November

November

December

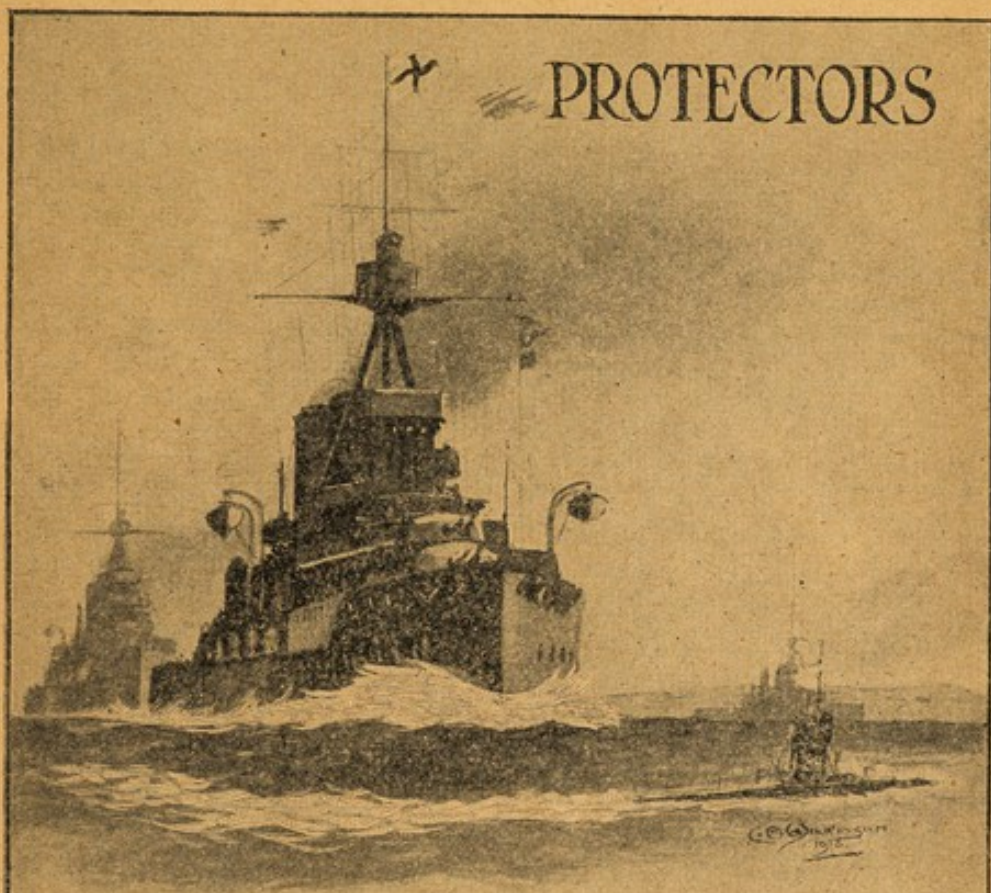
December

Balance carried forward

Balance carried forward

£

£



NORTH BRITISH & MERCANTILE

INSURANCE CO.

Established 1809.

*"An old and first class office.
Low rates a distinctive feature."—The Times.*

FUNDS £24,000,000.

LONDON: 61, THREADNEEDLE ST. E.C.

EDINBURGH: 64, PRINCES ST.

FIRE. LIFE. ACCIDENT. MARINE.

Annuities.
Leasehold
Redemption.
Motor Car.
Personal Accident.
Live Stock,
&c.

ASSETS EXCEED

HEAD OFFICE:
1, DALE STREET,
LIVERPOOL.



Burglary.
Fidelity Guarantee.
Plate Glass.
Workmen's
Compensation.
Loss of Profits, &c.

£14,100,000.

LONDON:
CHIEF OFFICE:
1, CORNHILL.
*Branches and Agencies in all
parts of the World.*

**PEARL
ASSURANCE COMPANY, LTD.**

Chief Offices: High Holborn, W.C.

ANNUAL INCOME EXCEEDS	£3,500,000.
CLAIMS PAID EXCEED	£17,000,000.

Bonuses are declared yearly on participating policies and vest immediately in the event of death.

**NORWICH UNION
MUTUAL LIFE OFFICE**

*because of its
AGE, MAGNITUDE, RESERVE STRENGTH,
PROFIT YIELD, ALERTNESS & ECONOMY,*

**The Outstanding
British
Life Office.**

Head Office: NORWICH.

Branches & Agencies in all principal towns.

**WHITFIELD'S
SAFES**

AND STEEL DOORS.

OXFORD ST., BIRMINGHAM.

Godliman House, Godliman Street,
LONDON, E.C.

**Dr. J. Collis Browne's
CHLORODYNE**

Of all
Chemists,
1/1½, 2/9, 4/6.

Cuts short attacks of SPASMS,
PALPITATION, HYSTERIA.
A true palliative in NEURALGIA,
TOOTHACHE, RHEUMATISM, GOUT.
Acts like a charm in DIARRHŒA,
and other bowel complaints.

THE BEST REMEDY KNOWN FOR
**COUGHS, COLDS,
ASTHMA, BRONCHITIS.**

Always ask for a "DR. COLLIS BROWNE"



THE BURBERRY

Keeps its wearer dry in rain, and survives long service.
Densely woven, it safeguards health against exposure to changes of temperature.
Airy light, it minimises fatigue, and tendency to overheating.
Faultlessly self-ventilating, is healthful and comfortable under all conditions.

See that your Burberry is labelled "Burberrys"

Illustrated Catalogue and Patterns, post free.

BURBERRYS Haymarket LONDON
Bd. Malesherbes PARIS

also appointed Agents in the Chief Cities throughout the World.

A. JOSEPH, EARL STREET, LONDON ROAD,
SOUTHWARK, S.E.
THE PREMIER HOUSE SINCE 1850.



TINMEN'S
PLUMBERS'
BLOWPIPE.

Telephones:
Hop. 83, 361 & 4272.
Telegrams:
"New Mungo, Sedist, London."
BUYERS and SELLERS of every description of Non-Ferrous METAL SCRAP, including BRASS, COPPER, LEAD, TIN, ZINC, etc.
We excel in the manufacture of Solder and hold large stocks for immediate delivery at Lowest Prices.

GEORGE SMYTHE & SON, LTD.,
Paper Makers and Contractors,
BANK CHAMBERS, 45, LUDGATE HILL, LONDON, E.C.
(Formerly of 90-93, Fleet Street.)

SUPERFINE, FINE, AND COMMON PRINTINGS.

Also Friction Glazed and Super Calendered Printing for Process Work.
WHITE AND TINTED NEWS IN WEBS AND SHEETS. FINE ART PAPERS.
ENGINE-SIZED AND TUB-SIZED WRITING PAPERS.
Azure Laid and Yellow Woves, and every Description of Papers for Account Books.
English and Foreign Tinted Writings and Printings.

TELEPHONES: { CENTRAL 3067 & 3068.
(Two lines). TELEGRAMS: "CULVERKEY, LONDON."
And PARIS.

Sizes 1½ to 300 B.H.P.
Horizontal. Vertical.
Portable.

Work on Refined or
Crude Oil.

10,695 ENGINES (99,114
Horse Power) sold to date.

Over 30 Gold and Silver
Medals awarded.

Agents throughout the
World.

IF YOU USE POWER FOR ANY PURPOSE, IT WILL PAY
YOU TO INVESTIGATE THE MERITS OF THE FAMOUS

PETTER OIL ENGINES

THE PERFECTED PRODUCT OF 20 YEARS' SPECIALISATION.

PETTERS LIMITED, OIL ENGINE
SPECIALISTS, YEovil.

