

'Suppositories and bougies improved shape'

Publication/Creation

1893

Persistent URL

<https://wellcomecollection.org/works/n29xtcr2>

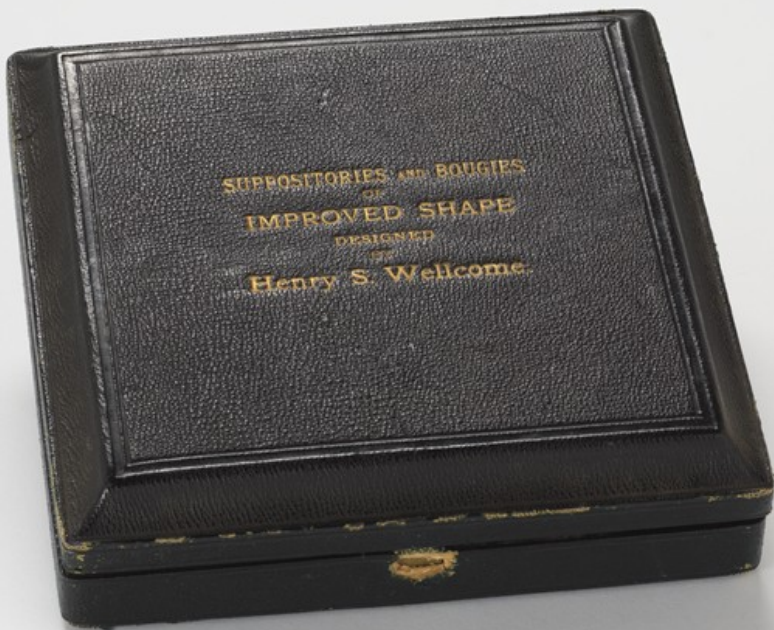
License and attribution

This work has been identified as being free of known restrictions under copyright law, including all related and neighbouring rights and is being made available under the Creative Commons, Public Domain Mark.

You can copy, modify, distribute and perform the work, even for commercial purposes, without asking permission.



Wellcome Collection
183 Euston Road
London NW1 2BE UK
T +44 (0)20 7611 8722
E library@wellcomecollection.org
<https://wellcomecollection.org>



SUPPOSITORIES AND BOUGIES
OF IMPROVED SHAPE
DESIGNED BY
SIR HENRY WELLCOME

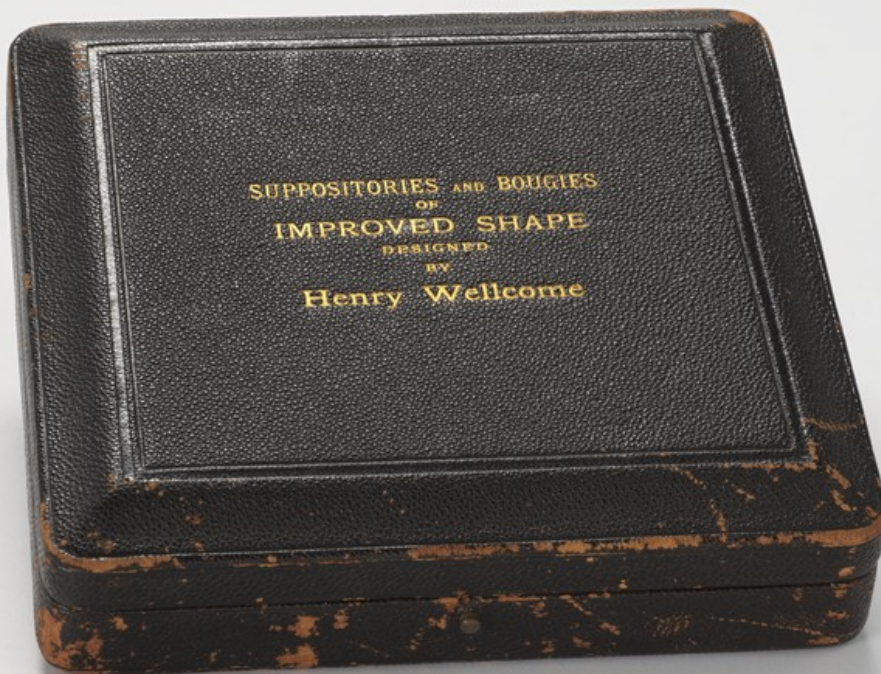
In a thesis presented to the American Pharmaceutical Association and printed in the minutes of the Section on Scientific Papers, 1893, Henry Wellcome described the improved shape he had originated for Suppositories and Bougies. This improved shape was designed to facilitate introduction and to prevent expulsion by utilising natural muscular contraction.

THE WELLCOME FOUNDATION LTD., LONDON









SUPPOSITORIES AND BOUGIES
OF
IMPROVED SHAPE
DESIGNED
BY
Henry Wellcome

