

Annual report for the year 1919 on the sanitary condition and vital statistics of the Metropolitan Borough of Poplar, comprising the registration sub-districts of Poplar, Bromley and Bow.

Contributors

Poplar (London, England). Metropolitan Borough.
Alexander, Frederick William.

Publication/Creation

[Place of publication not identified] : [publisher not identified], [1920]

Persistent URL

<https://wellcomecollection.org/works/vz8yam9a>

License and attribution

You have permission to make copies of this work under a Creative Commons, Attribution, Non-commercial license.

Non-commercial use includes private study, academic research, teaching, and other activities that are not primarily intended for, or directed towards, commercial advantage or private monetary compensation. See the Legal Code for further information.

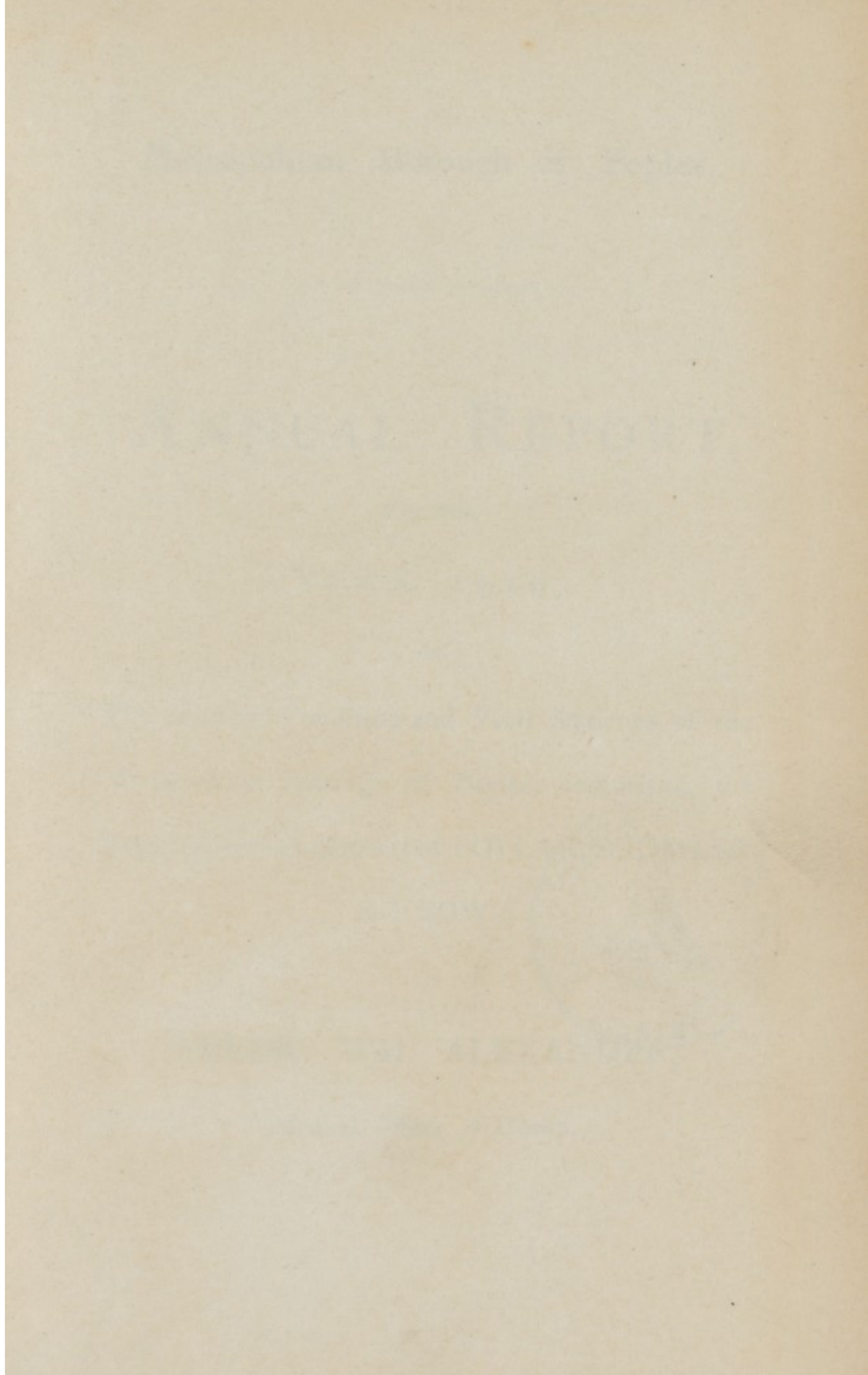
Image source should be attributed as specified in the full catalogue record. If no source is given the image should be attributed to Wellcome Collection.

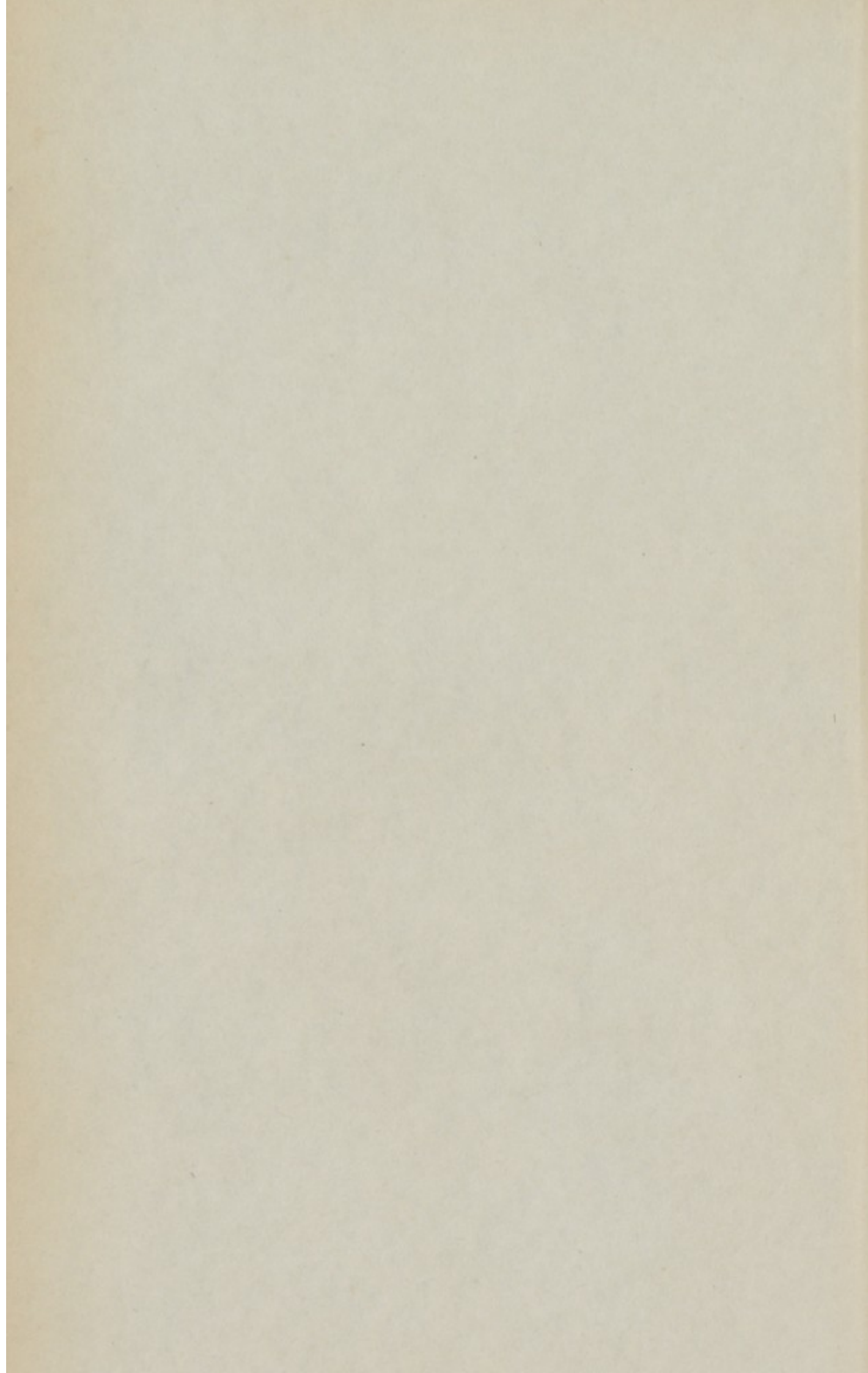


Wellcome Collection
183 Euston Road
London NW1 2BE UK
T +44 (0)20 7611 8722
E library@wellcomecollection.org
<https://wellcomecollection.org>



AE 4368





Metropolitan Borough of Poplar.

ANNUAL REPORT

FOR THE

YEAR 1919,

ON

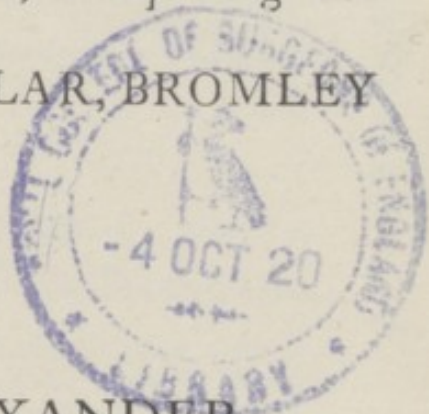
The Sanitary Condition and Vital Statistics of the
Metropolitan Borough of Poplar, comprising the
Registration Sub-districts of POPLAR, BROMLEY

and BOW.

BY

FREDK. WM. ALEXANDER,

Medical Officer of Health.



15898

ANNUAL REPORT

YEAR 1910

REPORT OF THE



CONTENTS.

	PAGE
Summary of Vital Statistics	v
Vital Statistics	1
Population	1
Births and Transferable Births	2
Illegitimate Births	4
Birth Rate	4
Marriages	4
Marriage Rate	5
Deaths	5
Deaths of Illegitimate Children	5
Death Rate	6
Zymotic Diseases, Death Rate	6
Respiratory Diseases, Death Rate	7
Infantile Mortality—Notification of Births Act, 1907—Tables	8, 39
Ophthalmia Neonatorum, Notifications, Public Health (Ophthalmia Neonatorum) Regulations, 1914	9
Age Mortality	9
Tubercular Diseases, Deaths, Death Rate	10
Phthisis—Deaths	11
Prevention of Consumption—Notifications; Summaries of Notifications Received; Number of Notifications on Form D; List of Non-Pulmonary Cases; Actual Number of Cases on Register at end of year 1919. Bacteriological Examinations; The Borough of Poplar Dispensary for the Prevention of Consumption; Deaths, Tubercular Diseases and Phthisis Number and Rate (see pages 10 and 11); Disinfection of Rooms and Articles (see page 52).. .. .	11
Tables of Deaths	19
Deaths from Drowning, &c.	22
Deaths of Persons of Unknown Addresses, included in the Mortality Statistics.. .. .	22
Vital Statistics, Tables	24
Notes on Nomenclature of Diseases	28
Tables of Deaths (Classification); Deaths	30
Tables of Deaths in Public Institutions	38
Tables of Infectious Diseases	46
Zymotic Diseases, Notifications; Institutions, Errors in Diagnosis; Infectious Diseases in Milkshops and on Homeworkers' Premises	50
Disinfecting Department—Rooms and Articles (Infectious Diseases and Verminous) Disinfected	52
Electrolytic Disinfecting Fluid—Output of Fluid, Distribution of Fluid, Cost of Material and Electricity, Bottles, Corks and Labels, Total Quantity Manufactured since Installation of Plant, Estimate for the year ended 31st March, 1919, and Expenditure for year ended 31st March, 1919. Average expenditure for the three years ended March, 1919. Estimated Expenditure for the year ending 31st March, 1920, and for the year ending 31st March, 1921, Spraying and Cleansing of Floors of London County Council Schools with Electrolytic Fluid, Swimming Baths—the use therein of Electrolytic Disinfecting Fluid, Comments on Adverse Criticisms.	
Verminous Children attending School—London County Council (General Powers) Act, 1907, Children Act, 1908, Number of Verminous Children Bathed, Itch Cases	58
Cleansing of Persons Act, 1897.. .. .	59
Verminous Persons in Common Lodging-Houses—London County Council (General Powers) Act, 1907, Number of Persons Cleansed from Common Lodging Houses within and without the Borough	59
Plague	60

	PAGE
Anthrax	60
Glanders—London (Notification of Glanders) Order, 1907..	60
Hydrophobia	61
Puerperal Fever—Number of Cases, Deaths ..	61
Small-pox	61
Vaccination—Vaccination Returns, 1918 & 1919 ..	62
Erysipelas	63
Scarlet Fever	63
Continued and Typhus Fevers	63
Typhoid Fever—Notifications, Rate per 1,000 Persons living, Errors in Diagnosis, Bacteriological Examinations of Doubtful Cases, Deaths ..	63
Diphtheria (including Membranous Croup)—Notifications, Deaths, Bacteriological Examinations, Errors in Diagnosis, Isolation, Diphtheria Antitoxin (London) Order, 1910 ..	65
Whooping Cough—Deaths	67
Influenza Deaths	67
Measles—Deaths, Outworkers	69
"Spotted Fever" (Epidemic Cerebro-Spinal Meningitis)	69
Acute Polio-Myelitis or Acute Polio-Encephalitis and Acute Encephalitis Lethargica	71
Diarrhœa and Enteritis, Deaths, Notification of Zymotic Enteritis and Summer Diarrhœa	71
Inquests and Deaths from Violence	73
Mortuary—Number of Bodies Received into Council's Cottage Street Mortuary ..	74
Canal Boats	74
Workshops, Workplaces, Laundries and Outworkers	75
Table A—Number of Inspections of, &c., of Bakehouses, Laundries, Workshops, Workplaces, Places where Food is Prepared, Milk Premises, Cowsheds, Slaughterhouses, Offensive Businesses, Ice Cream Premises, Registered Houses Let in Lodgings and Homeworkers' Premises	75
Table B—Lists of Trades, Workshops, &c.	76
Tables C, D, E and F—Filled in at the request of the Secretary of State, Factories, Workshops, Laundries, Workplaces, Homework, &c.	78-81
Bakehouses—Inspections	81
Coffee Shops, Eating Houses, Fried Fish Shops, Hotels, Restaurants, &c., London County Council (General Powers) Act, 1908—Sanitary Regulations for Premises used for the Sale, &c., of Food for Human Consumption	82
Hairdressers' Premises	82
Milkshops—Dairies, Cowsheds and Milkshops Order, London County Council (General Powers) Act, 1908, Power to Sanitary Authority to remove from or refuse to enter on Register Names of Dairymen in Certain Circumstances ..	82
Smoke Nuisances	83
Ice Cream	83
Food and Drugs Acts—Results of Analyses, Legal Proceedings, Preservatives in Butter; Preservatives in Margarine	84
Houses Let in Lodgings or Occupied by Members of more than one Family—Work of the Inspector	88
Housing—Housing Acts, 1890-1919; Housing (Inspection of District) Regulations, 1910; Representations and Closing Orders under Section 17; Determination of Closing Orders Section 17 (6); Representations to London County Council under the Housing of the Working Classes Act, 1890, Part 1.	88
London County Council (General Powers) Act, 1904, Verminous Rooms	90
Schools—Inspection of Schools	91
Rag Flock Act	91
Sanitary Inspectors' Work—Tabulated List of Sanitary Inspections, &c., Over- crowding, General, Legal Proceedings	91
Report— Miss Alice E. Hall (Chief Health Visitor)	100

SUMMARY OF VITAL STATISTICS FOR 1919.

Area of Borough (excluding Water)*	2,136 acres
" Poplar Sub-District	1,004 "
" Bromley	589 "
" Bow	543 "
Population (Census 1911)—Borough	162,442
" Poplar Sub-District	56,393
" Bromley	65,226
" Bow	40,823
" **Estimated to Middle of 1919—Borough	153,644
" Poplar Sub-District	160,051
" Bromley	53,371
" Bow	55,596
" Bromley	61,516
" Bow	64,083
" Bow	38,757
" Bow	40,372
Density†—Borough	71.93
" Poplar Sub-District	53.15
" Bromley	104.44
" Bow	71.37
Marriages—Borough	3,326
" Poplar Sub-District	794
" Bromley	1,122
" Bow	1,410
Births—Borough	3,949
" Poplar Sub-District	1,450
" Bromley	1,634
" Bow	865
Birth Rate—Borough	24.67
" Poplar Sub-District	26.08
" Bromley	25.49
" Bow	21.42
Deaths—Borough	22.13
" Poplar Sub-District	810
" Bromley	870
" Bow	533
Death Rate—Borough	14.40
" Poplar Sub-District	15.17
" Bromley	14.14
" Bow	13.75
Infantile Mortality—Borough	83 per 1,000 births
" Poplar Sub-District	82 " "
" Bromley	80 " "
" Bow	87 " "
Inhabited Houses (Census 1911)—Borough	22,472
" Poplar Sub-District	8,201
" Bromley	8,721
" Bow	5,550

		*Land and Inland Water.	Inland Water only.	Tidal Water and Foreshore
		Acres.	Acres.	Acres.
Sub-Districts	{ Bow ..	555.7	12.5	9.8
	{ Bromley ..	605.8	17.3	19.1
	{ Poplar ..	1166.2	161.9	296.9
Borough ..		2327.7	191.7	325.8

The last column "tidal water and foreshore" is *not* included in the first column and therefore must not be deducted to arrive at "land" area.

** See *italics* end of first paragraph, page 2.

† Without water.

SUMMARY OF FINANCIAL STATEMENTS FOR 1913

Assets	Liabilities	Assets	Liabilities	Assets	Liabilities
Fixed Assets	Capital	Fixed Assets	Capital	Fixed Assets	Capital
Land	Common Stock	Land	Common Stock	Land	Common Stock
Buildings	Preferred Stock	Buildings	Preferred Stock	Buildings	Preferred Stock
Equipment	Reserves	Equipment	Reserves	Equipment	Reserves
Investments	Surplus	Investments	Surplus	Investments	Surplus
Current Assets		Current Assets		Current Assets	
Cash		Cash		Cash	
Accounts Receivable		Accounts Receivable		Accounts Receivable	
Inventory		Inventory		Inventory	
Prepaid Expenses		Prepaid Expenses		Prepaid Expenses	
Other Assets		Other Assets		Other Assets	
Total	Total	Total	Total	Total	Total

The above statement is a summary of the financial statements of the company for the year 1913. It is not intended to be a complete statement of the company's affairs, but rather a summary of the most important items. The figures are in dollars and cents, unless otherwise indicated.

Metropolitan Borough of Poplar.

COMPRISING THE REGISTRATION SUB-DISTRICTS OF POPLAR, BROMLEY AND BOW.

ANNUAL REPORT

OF THE

MEDICAL OFFICER OF HEALTH.

*To the Mayor, Aldermen and Councillors of the Metropolitan
Borough of Poplar.*

SIR, LADIES AND GENTLEMEN,

In accordance with the "Sanitary Officers' (London) Order, 1891," of the Local Government Board, dated 8th December, 1891, I have the pleasure of submitting to you my twenty-seventh Annual Report, which deals with the year 1919. The report of the Chief Health Visitor is appended, but those of the Sanitary Inspectors have not been printed this year, the work as far as possible being shown in tabulated form, pages 92-94.

VITAL STATISTICS.

The population of the Borough, calculated by the Registrar General is 153,644 for the death rate and 160,051 for the birth rate† :—

London.	Poplar.	Bromley.	Bow.
4,358,309 † ..	53,371 ..	61,516 ..	38,757
4,540,062 † ..	55,596 ..	64,083 ..	40,372

being 66·00 per acre for the Borough of Poplar, 45·76 per acre in Poplar Sub-District, 101·54 in Bromley, and 69·74 in Bow.* These estimated populations are the figures used in calculating the various rates in the present Report.

* These figures are calculated upon the acreage of the district including the inland water area, not tidal and foreshore. Exclusive of area covered by water they are :— 71·93 per acre for the Borough of Poplar, 53·15 for the Sub-District of Poplar, 104·44 for the Sub-District of Bromley, and 71·37 for the Sub-District of Bow. County of London 60·0 (Census 1911).

† Based on the returns furnished under the scheme for rationing of food.

‡ See *italics* end of first paragraph, page 2.

The rates for 1914 in Tables IV., V., VI. and VII., have been calculated upon revised estimated populations based upon the censuses of 1901 and 1911. The rates for 1915-1919, were calculated upon the populations estimated by the Registrar General.

The following estimates of population have been adopted in the General Register Office, Somerset House, for the calculation of the death rate and birth rate of the Borough for the year 1919 :

For the death rate	153,644
„ „ birth „	160,051

During the year 1919 births took place in institutions within the Borough as follows :—

	<i>Males.</i>	<i>Females.</i>	<i>Total.</i>	<i>Remarks.</i>
Poplar Union Workhouse	16	24	40	All Poplar Borough births except three males and four females.
Sick Asylum	19	7	26	All Poplar Borough births except three males and three females.
Bromley House Institution	3	3	4	All Stepney births.
31, Sturry Street ..	0	2	2	Not Poplar births.

The number of births as per headings of Registrars' weekly returns was as follows :—

	<i>Males.</i>	<i>Females.</i>	<i>Totals.</i>
Poplar ..	708	639	1,347
Bromley ..	802	712	1,514
Bow ..	399	411	810
Totals ..	1,909	1,762	3,671

The corrected number of births with additions and subtractions is as follows :—*

	<i>Males.</i>	<i>Females.</i>	<i>Totals.</i>
Poplar ..	764	686	1,450
Bromley ..	855	779	1,634
Bow ..	427	438	865
Totals† ..	2,046	1,903	3,949

* See page 3.

† See page 4, Transferable Births.

Particulars.	Males.	Females.	Totals.
*POPLAR (SUB-DISTRICT).			
Registrar's Weekly Returns	708	639	1,347
<i>Births occurring outside the Sub-District of persons belonging thereto :—</i>			
Mothers' Home, Commercial Road ..	55	51	135
London Hospital	6	2	
Salvation Army Maternity Hospital ..	1	1	
City of London Lying-in Hospital ..	—	3	
Stepney (11, Church Row)	—	1	
Sick Asylum	4	2	
City of London Workhouse	—	1	
Queen Charlotte's Hospital	—	2	
Forest Gate Sick Home	1	—	
Deptford.. .. .	—	1	
Lee	1	—	
Lying-in Hospital, Lambeth	—	1	
Bournemouth	—	1	
Wanstead	—	1	
<i>Births occurring within the Sub-District of persons not belonging thereto :—</i>			
Poplar Union { Bromley	3	9	32
Workhouse { Bow	6	5	
Others	3	4	
31, Sturry Street	—	2	1,450
Births, nett	764	686	
BROMLEY.			
Registrar's Weekly Returns	802	712	1,514
<i>Births occurring outside the Sub-District of persons belonging thereto :—</i>			
Mothers' Home, Commercial Road ..	61	50	147
Poplar Union Workhouse	3	9	
City of London Lying-in Hospital ..	3	3	
London Hospital	1	3	
Lying-in Hospital, Lambeth	1	—	
Salvation Army Hospital	1	4	
Queen Charlotte's Hospital	1	1	
University College Hospital	—	1	
Wallasey.. .. .	1	—	
Hockley, Essex	—	1	
St. Bartholomew's Hospital	—	1	
Whitechapel Infirmary	—	1	
Stepney (Underwood Street)	—	1	
<i>Births occurring within the Sub-District of persons not belonging thereto :—</i>			
Sick Asylum	11	5	27
Bromley House Institution	7	3	
Mornington Road	1	—	
Births, nett	855	779	1,634
Bow.			
Registrar's Weekly Returns	399	411	810
<i>Births occurring outside the Sub-District of persons belonging thereto :—</i>			
Mothers' Home, Commercial Road ..	10	5	55
Poplar Union Workhouse	6	5	
Sick Asylum	4	—	
London Hospital	3	5	
City of London Lying-in Hospital ..	4	4	
Salvation Army Hospital, Hackney..	1	1	
Queen Charlotte's Hospital	—	3	
St. Pancras Borough	—	1	
Maternity Home—Great Easton ..	—	1	
Streatham	—	2	
Births, nett	427	438	865

Transferable Births Registered during the year 1919.

At the beginning of the year 1920 the Registrar-General afforded the following information for the year ended 31st December, 1919 :—

	Inward Transfers.	Outward Transfers.
Legitimate—Males ..	148	3
Females ..	137	4
Illegitimate—Males ..	5	10
Females ..	14	6
Total—Males ..	153	13
Females ..	151	10

The corrected total births for the Borough, according to the Registrar General, is :—

Males.	Females.	Total.
2,040	1,911	3,951

giving a rate of 24·68 per 1,000 inhabitants.

The number of illegitimate births belonging to the Borough, according to the Registrar General, is :—

Males.	Females.	Total.
47	65	112

The annual birth rate per 1,000 living being :—

	Poplar.	Bromley.	Bow.	Borough of Poplar.	County of London.
1915 ..	29·55	31·84	27·67	29·99	22·6
1916 ..	26·86	27·97	25·32	26·92	21·5
1917 ..	23·40	23·94	21·49	23·13	17·5
1918 ..	20·88	21·35	18·56	20·48	16·1*
1919 ..	26·08	25·49	21·42	24·67	18·5

MARRIAGES.

During the year the marriages of 3,326 persons were registered in the Borough, giving an annual rate of 20·78 per 1,000 of the estimated population, the rate for England and Wales being 19·7, and for London 22·1.

* The rate in England and Wales in 1919 was 18·5 per 1,000 of the estimated population.

The annual marriage rate per 1,000 living being :—

			Borough of			County of	
	Poplar.	Bromley.	Bow.	Poplar.		London.	
1915 ..	34·86	.. 24·55	.. 22·17	.. 27·53	..	25·7	
1916 ..	22·11	.. 15·62	.. 13·60	.. 17·37	..	19·0	
1917 ..	19·55	.. 13·93	.. 11·45	.. 15·25	..	17·5	
1918 ..	23·12	.. 13·70	.. 12·72	.. 16·73	..	19·4	
1919 ..	14·28	.. 17·50	.. 34·92	.. 20·78	..	22·1	

DEATHS.

During the year 2,337 deaths were registered in the Borough of Poplar, 451 deaths having occurred in the Sub-District of Poplar, 1,609 in Bromley, and 277 in Bow; from the 451 deaths which took place in Poplar there must be deducted 34 deaths of non-residents, and to the remainder must be added 393 deaths which occurred in outlying institutions, making a total of 810 deaths of Poplar parishioners. Treating the 1,609 registered deaths in Bromley in a similar manner, viz., deducting 902 deaths of non-parishioners and adding 163 deaths in outlying institutions, the deaths to be assigned to this sub-district will be found to be 870. From the 277 Bow deaths, there must be deducted 4 non-residents and added 260 deaths in outlying institutions, making a total of 533 deaths.

In dealing separately with the sub-districts as above, it will be seen by referring to Tables I., II., and III., that in considering the deaths of non-residents and those from outlying institutions, certain additions and deductions from the sub-districts have to be made in respect of themselves, but when considering the Borough as a whole, then from the 2,337 deaths which were registered there must be deducted 549 deaths of actual non-residents, and 425 deaths in institutions entirely outlying must be added, making a total for the Borough of 2,213 upon which the death rate is calculated.

The 810 deaths in Poplar included 8 illegitimate children, 3 male and 5 female; the 870 deaths in Bromley included 7 illegitimate children, 2 male and 5 female; the 533 Bow deaths included 1 illegitimate female child, making a total for the Borough of 16 deaths of illegitimate children.

		<i>Males.</i>		<i>Females.</i>		<i>Totals.</i>
Poplar	..	440	..	370	..	810
Bromley	..	465	..	405	..	870
Bow	..	290	..	243	..	533
<hr/>						
Totals	..	1,195	..	1,018	..	2,213

The male births in the Borough exceeded those of the female by 143, and the male deaths exceeded those of the female by 177 which makes a gain of 34 females.

The following figures are the death rates per 1,000 living for the past 5 years (see page 2):—

				Borough of		County of	
	Poplar.	Bromley.	Bow.	Poplar.	London		
1915	.. 21.50	.. 18.46	.. 18.69	.. 19.57	.. 16.1		
1916	.. 17.07	.. 15.91	.. 15.77	.. 16.27	.. 14.3		
1917	.. 18.36	.. 16.76	.. 14.89	.. 16.84	.. 15.0		
1918	.. 23.87	.. 22.32	.. 21.98	.. 22.77	.. 18.9		
1919	.. 15.17	.. 14.14	.. 13.75	.. 14.40	.. 13.4		

It should be borne in mind that, in studying death rates, comparison should be made with those of districts the inhabitants of which exist under similar conditions. See Table XVII., page 43, East Districts.

ZYMOTIC DISEASES.

Measles, scarlet fever, pertussis, diphtheria and membranous croup, fever, diarrhæa and enteritis.

Death rates per 1,000 living.

				Borough of	
	Poplar.	Bromley.	Bow.	Poplar.	
1915	.. 3.39	.. 2.09	.. 2.43	.. 2.63	
1916	.. 1.52	.. 1.52	.. 1.55	.. 1.53	
1917	.. 1.64	.. 2.07	.. 1.43	.. 1.76	
1918	.. 2.08	.. 2.30	.. 2.13	.. 2.18	
1919	.. 1.19	.. 0.82	.. 1.18	.. 1.04	

Proportion of deaths to 1,000 deaths from all causes.

				Borough of	
	Poplar.	Bromley.	Bow.	Poplar.	
1915	.. 157.66	.. 113.41	.. 130.25	.. 134.35	
1916	.. 89.13	.. 95.15	.. 98.86	.. 94.25	
1917	.. 89.61	.. 123.57	.. 96.47	.. 104.67	
1918	.. 87.29	.. 103.44	.. 96.89	.. 95.97	
1919	.. 79.01	.. 58.62	.. 86.30	.. 72.75	

RESPIRATORY DISEASES.

Bronchitis, pneumonia (all forms) and other diseases of respiratory organs

Death rates per 1,000 living.

		Poplar.		Bromley.		Bow.		Borough of Poplar.
1915	..	4.66	..	5.05	..	3.72	..	4.58
1916	..	3.47	..	3.49	..	3.78	..	3.55
1917	..	3.63	..	4.33	..	3.12	..	3.78
1918	..	5.05	..	4.99	..	4.26	..	4.83
1919	..	2.97	..	3.25	..	2.63	..	3.00

Proportion of deaths to 1,000 deaths from all causes.

		Poplar.		Bromley.		Bow.		Borough of Poplar.
1915	..	216.79	..	273.59	..	199.45	..	234.06
1916	..	203.26	..	219.62	..	239.86	..	218.61
1917	..	197.81	..	258.56	..	209.64	..	224.65
1918	..	211.75	..	223.73	..	193.79	..	212.08
1919	..	196.29	..	229.88	..	191.36	..	208.31

INFANT MORTALITY.*

INFANTILE MORTALITY ; NOTIFICATION OF BIRTHS ACT, 1907.

INFANTILE MORTALITY.

There were 120 deaths of children under one year of age belonging to Poplar, 132 deaths under one year of age belonging to Bromley, and 76 deaths under one year of age belonging to Bow, making a total for the Borough of 328.† The death rates of children under one year per 1,000 births for the past 12 years being :—

		Poplar.		Bromley.		Bow.		Borough of Poplar.		County of London.
1908	..	118.49	..	126.50	..	119.36	..	123.83	..	113
1909	..	128.92	..	132.86	..	128.32	..	130.40	..	108
1910	..	114.79	..	119.81	..	125.31	..	119.38	..	103
1911	..	157.02	..	158.02	..	161.42	..	158.50	..	129
1912	..	119.59	..	103.83	..	101.07	..	108.40	..	90
1913	..	107.97	..	117.56	..	112.11	..	112.90	..	105
1914	..	108.47	..	118.31	..	127.64	..	117.21	..	104
1915	..	137.78	..	120.98	..	152.15	..	133.98	..	112
1916	..	104.12	..	111.11	..	90.90	..	103.89	..	89
1917	..	94.61	..	97.19	..	92.27	..	95.13	..	103
1918	..	112.87	..	106.20	..	101.09	..	107.39		107
1919	...	82.75	..	80.78	..	87.86	..	83.05**		85

* For Tables of Infantile Mortality, see Tables XIII., XIV., XV. and XVI., pages 39-42.

† The 328 deaths of infants under one year of age include deaths in outlying institutions and allow for deductions of non-residents.

** See Health Visitor's Report (page 100). Mortality rate among infants visited was 67.9 per 1,000. The infants visited are for the most part in the poorest portions of the Borough, and the rate refers to those born in 1918. In 1910 and 1911 the rates were 105.69 and 115.62, because diarrhoea was prevalent in 1911.

The infantile mortality rate is based on *deaths* occurring in any one year and births occurring in that and the preceding year. The rate of mortality amongst infants visited by Health Visitors is calculated upon *births* occurring in one particular year and deaths in that and the following year. The children born in 1910 and dying during 1910-11 are shown in the rate for 1910, so that the diarrhoea months June, July, August and September of 1911 affected not only the children born in 1911, but also those born in 1910 who had not yet reached one year of age, hence the higher rates amongst infants visited during the two years 1910 and 1911.

1908	Mortality rates amongst infants visited	..	104.19
1909	"	..	98.75
1910	"	..	105.69
1911	"	..	115.62
1912	"	..	90.10
1913	"	..	83.20
1914	"	..	117.00
1915	"	..	98.20
1916	"	..	78.07
1917	"	..	79.2
1918	"	..	67.9

NOTIFICATION OF BIRTHS ACT, 1907.

During the year 4,030 notifications were received under the Notification of Births Act, 1907.

OPHTHALMIA NEONATORUM.

NOTIFICATIONS OF OPHTHALMIA NEONATORUM.

Sixty-one cases of Ophthalmia Neonatorum were notified during the year—27, Poplar; 29, Bromley; and 5, Bow.

Ten cases were treated in hospitals—3, Poplar; 6, Bromley; and 1, Bow.

SUMMARY.

District.	Notifications.	Actual Cases.	Midwives' Notifications.†	Notified by Midwives only.
	(1.)	(2.)	(3.)	(4.)
Poplar ...	34	27	7	3
Bromley ...	37	29	15	9
Bow ...	6	5	0	0
Grand Totals	77	61	22	12*

* Included in Cols. 1, 2 and 3.

† Also notified by medical men.

AGE MORTALITY.

The number of deaths from one year to 65 years of age was 464 for Poplar, 488 for Bromley, and for Bow 284, making a total for the Borough of Poplar of 1,236. The annual death rates per 1,000 living for the past 5 years being:—

		Poplar.		Bromley.		Bow.		Borough of Poplar.
1915	..	12.12	..	9.99	..	9.74	..	10.66
1916	..	9.98	..	8.88	..	8.23	..	9.10
1917	..	11.05	..	9.68	..	8.73	..	9.92
1918	..	15.28	..	14.73	..	14.03	..	14.74
1919	..	8.69	..	7.93	..	7.32	..	8.04

The number of deaths over 65 years was 226 for Poplar, 250 for Bromley, and 173 for Bow, making a total of 649 for the whole Borough. The annual death rates per 1,000 living for the past 5 years being :—

		Poplar.		Bromley.		Bow.		Borough of Poplar.
1915	..	5.30	..	4.61	..	4.74	..	4.88
1916	..	4.04	..	3.63	..	5.03	..	4.13
1917	..	4.83	..	4.49	..	3.95	..	4.47
1918	..	5.94	..	5.04	..	5.85	..	5.56
1919	..	4.23	..	4.06	..	4.46	..	4.22

TUBERCULAR DISEASES.*

(Deaths at all ages.)

		Poplar.		Bromley.		Bow.		Borough of Poplar.
1915	..	131	..	123	..	74	..	328
1916	..	138	..	120	..	68	..	326
1917	..	138	..	126	..	73	..	337
1918	..	140	..	127	..	89	..	356
1919	..	84	..	86	..	52	..	222

* Including phthisis.

Death rates per 1,000 persons living.

		Poplar.		Bromley.		Bow.		Borough of Poplar.
1915	..	2.41	..	1.96	..	1.87	..	2.09
1916	..	2.56	..	1.93	..	1.73	..	2.10
1917	..	2.76	..	2.19	..	2.01	..	2.34
1918	..	2.88	..	2.27	..	2.52	..	2.55
1919	..	1.57	..	1.39	..	1.34	..	1.44

Proportion of deaths to 1,000 deaths from all causes.

		Poplar.		Bromley.		Bow.		Borough of Poplar.
1915	..	112.25	..	106.49	..	100.40	..	107.22
1916	..	150.00	..	121.45	..	110.21	..	129.10
1917	..	150.81	..	130.84	..	135.43	..	138.60
1918	..	121.00	..	101.84	..	114.98	..	112.02
1919	..	103.70	..	98.85	..	97.56	..	100.31

PHTHISIS.*Deaths (all ages).*

		Poplar.		Bromley.		Bow.		Borough of Poplar.
1915	..	102	..	104	..	63	..	269
1916	..	96	..	97	..	59	..	252
1917	..	113	..	100	..	63	..	256
1918	..	112	..	112	..	74	..	298
1919	..	74	..	74	..	47	..	195

PREVENTION OF CONSUMPTION.**PUBLIC HEALTH (TUBERCULOSIS) REGULATIONS,
1912.****TREATMENT OF TUBERCULOSIS.**

NOTIFICATIONS; SUMMARIES OF NOTIFICATIONS RECEIVED; NUMBER OF NOTIFICATIONS ON FORM "D"; LIST OF NON-PULMONARY CASES; ACTUAL NUMBER OF CASES ON REGISTER, END OF YEAR 1919; BACTERIOLOGICAL EXAMINATIONS; THE BOROUGH OF POPLAR DISPENSARY FOR THE PREVENTION OF CONSUMPTION; DEATHS, TUBERCULAR DISEASES AND PHTHISIS—NUMBERS AND RATES, SEE PAGES 10 AND 11; DISINFECTION OF ROOMS AND ARTICLES, SEE PAGE 52.

PUBLIC HEALTH (TUBERCULOSIS) REGULATIONS, 1912.

Summary of Notifications received during the period from the 29th December, 1918, to the 3rd January, ¹⁹²⁰~~1919~~, in

POPLAR (WHOLE BOROUGH).

Age Periods	Notifications on Form A.													Notifications on Form B.					Number of Notifications on Form C.	
	Number of Primary Notifications.												Total Notifications on Form A.	Number of Primary Notifications.				Total Notifications on Form B.	Poor Law Institutions.	Sanatoria.
	0 to 1	1 to 5	5 to 10	10 to 15	15 to 20	20 to 25	25 to 35	35 to 45	45 to 55	55 to 65	65 and upwards.	Total Primary Notifications		Under 5	5 to 10	10 to 15	Total Primary Notifications			
Pulmonary—																				
Males ...	—	6	27	17	27	43	94	77	46	11	6	354	469	—	1	2	3	6	27	134
Females ...	—	7	24	18	18	29	52	39	20	11	1	219	298	—	1	2	3	7	9	60
Non-Pulmonary—																				
Males ...	1	25	52	33	6	3	7	4	—	2	—	133	155	—	2	1	3	14	4	4
Females ...	1	24	44	30	5	1	5	1	1	1	4	117	144	—	—	4	4	9	1	5
Totals ...	2	62	147	98	56	76	158	121	67	25	11	823	1066	—	4	9	13	36	41	203

PUBLIC HEALTH (TUBERCULOSIS) REGULATIONS, 1912.

[Summary of Notifications received during the period from the 29th December, 1918, to the 3rd January, ¹⁹²⁰~~1919~~, in

POPLAR (SUB-DISTRICT).

Age Periods.	Notifications on Form A.													Notifications on Form B.					Number of Notifications on Form C.	
	Number of Primary Notifications.												Total Notifications on Form A.	Number of Primary Notifications.				Total Notifications on Form B.		
	0 to 1	1 to 5	5 to 10	10 to 15	15 to 20	20 to 25	25 to 35	35 to 45	45 to 55	55 to 65	65 and upwards.	Total Primary Notifications		Under 5	5 to 10	10 to 15	Total Primary Notifications			
																				Poor Law Institutions.
Pulmonary—																				
Males ...	—	2	10	8	9	18	39	30	17	3	3	139	184	—	—	—	—	1	16	48
Females ...	—	5	7	9	8	16	16	17	7	2	—	87	122	—	—	—	—	1	—	26
Non-Pulmonary—																				
Males ...	1	8	17	14	2	2	4	—	—	1	—	49	54	—	2	—	2	8	2	2
Females ...	1	4	23	13	3	—	3	—	—	—	1	48	57	—	—	1	1	2	—	2
Totals ...	2	19	57	44	22	36	62	47	24	6	4	323	417	—	2	1	3	12	18	78

PUBLIC HEALTH (TUBERCULOSIS) REGULATIONS, 1912.

Summary of Notifications received during the period from the 29th December, 1918, to the 3rd January, ¹⁹²⁰~~1919~~, in

BROMLEY (SUB-DISTRICT).

Age Periods.	Notifications on Form A.													Notifications on Form B.					Number of Notifications on Form C.		
	Number of Primary Notifications.												Total Notifications on Form A.	Number of Primary Notifications.				Total Notifications on Form B.	Poor Law Institutions.	Sanatoria.	
	0 to 1	1 to 5	5 to 10	10 to 15	15 to 20	20 to 25	25 to 35	35 to 45	45 to 55	55 to 65	65 and upwards.	Total Primary Notifications		Under 5	5 to 10	10 to 15	Total Primary Notifications				
Pulmonary—																					
Males ...	—	3	12	4	7	16	32	29	15	4	2	124	164	—	1	1	2	3	6	52	
Females ...	—	1	10	5	7	6	21	14	8	3	1	76	100	—	—	—	—	—	6	13	
Non-Pulmonary—																					
Males ...	—	11	22	15	2	1	1	4	—	1	—	57	72	—	—	1	1	5	1	1	
Females ...	—	10	14	11	2	1	1	—	1	1	—	41	52	—	—	3	3	6	—	2	
Totals ...	—	25	58	35	18	24	55	47	24	9	3	298	388	—	1	5	6	14	13	68	

PUBLIC HEALTH (TUBERCULOSIS) REGULATIONS, 1912.

Summary of Notifications received during the period from the 29th December, 1918, to the 3rd January, ¹⁹²⁰~~1919~~, in

Bow (SUR-DISTRICT)

Age Periods.	Notifications on Form A.													Notifications on Form B.					Number of Notifications on Form C.	
	Number of Primary Notifications.												Total Notifications on Form A.	Number of Primary Notifications.				Total Notifications on Form B.		
	0 to 1	1 to 5	5 to 10	10 to 15	15 to 20	20 to 25	25 to 35	35 to 45	45 to 55	55 to 65	65 and upwards.	Total Primary Notifications		Under 5	5 to 10	10 to 15	Total Primary Notifications			
																				Poor Law Institutions.
Pulmonary—																				
Males ...	—	1	5	5	11	9	23	18	14	4	1	91	121	—	—	1	1	2	5	34
Females ...	—	1	7	4	3	7	15	8	5	6	—	56	76	—	1	2	3	6	3	21
Non-Pulmonary—																				
Males ...	—	6	13	4	2	—	2	—	—	—	—	27	29	—	—	—	—	1	1	1
Females ...	—	10	7	6	—	—	1	1	—	—	3	28	35	—	—	—	—	1	1	1
Totals ...	—	18	32	19	16	16	41	27	19	10	4	202	261	—	1	3	4	10	10	57

NUMBER OF NOTIFICATIONS ON FORM D. (CASES DISCHARGED FROM
POOR LAW INSTITUTIONS AND SANATORIA.)

		Poplar.		Bromley.		Bow.		Totals
Poor Law Institutions	Pulmonary	M. ..	10	..	1	..	7	.. 18
		F. ..	2	..	4	..	3	.. 9
	Non- Pulmonary	M. ..	1	..	1	..	1	.. 3
		F. ..	3	..	3	..	2	.. 8
Sanatoria ..	Pulmonary	M. ..	43	..	46	..	32	.. 121
		F. ..	24	..	19	..	19	.. 62
	Non- Pulmonary	M. ..	1	..	1	..	2	.. 4
		F. ..	4	..	2	..	1	.. 7
Totals ..	Pulmonary	M. ..	53	..	47	..	39	.. 139
		F. ..	26	..	23	..	22	.. 71
	Non- Pulmonary	M. ..	2	..	2	..	3	.. 7
		F. ..	7	..	5	..	3	.. 15

LIST OF NON-PULMONARY CASES (FOR BOROUGH).
TOTAL NOTIFICATIONS.

						Form A.	Form B
Bones and Joints :—							
Ankle	3	—
Arms, legs, etc.	5	1.
Elbow	1	1
Hip	14	6
Joints	—	1
Knee	10	1
Rib	1	—
Shoulder	2	1
Spine	7	1
Glands :—							
Cervical	4	2
Neck	197	5
Others (location not specified)	14	—

						Form A.	Form B.
Various :—							
Abdomen	1	1
Bladder	1	—
Breast	1	—
Dactylitis	—	—
Hilus	3	2
Kidneys	2	—
Larynx	2	—
Meninges	10	—
Nose	1	—
Peritoneum	11	1
Pleura	1	—
Skin	5	—
Testicle	3	—

ACTUAL NUMBER OF CASES ON REGISTER.

Number of cases on Register at beginning of year 1919	3,627	
Add New cases during year	879	
	—————	4,506
Deduct :—		
Died (<u>notified cases only</u>)	194	
Removed, etc.	29	
Arrested or cured	26	
	—————	249
Number of cases on Register beginning of 1920 ..		4,257

BACTERIOLOGICAL EXAMINATIONS.

During the year ended 31st December, 1919, 111 samples of sputum were bacteriologically examined free of cost at the Borough of Poplar Dispensary for the Prevention of Consumption. The Tubercle bacillus as found to be present in 35 instances (31·53 per cent.).

BOROUGH OF POPLAR DISPENSARY FOR THE PREVENTION OF CONSUMPTION.

Number of Notifications received from the Borough of Poplar Dispensary for the Prevention of Consumption during the period from 1st January, 1919, to 31st December, 1919 :—

POPLAR (WHOLE BOROUGH).

Age Periods.	Notifications on Form A.											
	Number of Notifications.											
	0 to 1	1 to 5	5 to 10	10 to 15	15 to 20	20 to 25	25 to 35	35 to 45	45 to 55	55 to 65	65 and upwards	Total Notifi- cations
Pulmonary—												
Males ...	—	5	29	10	21	27	51	49	25	2	1	220
Females ...	—	4	21	13	13	15	35	24	11	5	2	143
Non-pulmonary—												
Males ...	1	17	39	18	—	3	3	—	—	—	—	81
Females ...	—	13	37	12	1	—	3	1	—	—	—	67
Totals ...	1	39	126	53	35	45	92	74	36	7	3	511

DISTRIBUTION OF CASES IN THE BOROUGH.

	Insured.	Uninsured.	Total.
Bromley.. ..	27	72	99
Bow	77	96	173
Poplar	105	137	242
	209	305	514*

* Including 3 cases transferred to other Boroughs.

The number of new cases who attended at the Dispensary during the year 1919 was 1,687 ; of these, 514 were tuberculous, 6 non-residents were notified to Medical Offices of Health of District concerned.

There was a total of 9,555 attendances at the Dispensary.

DEATHS, TUBERCULAR DISEASES AND PHTHISIS—

NUMBER AND RATES SEE PAGES 10 AND 11.

DISINFECTION OF ROOMS AND ARTICLES SEE PAGE 52.

TABLE I.

Deaths during the year 1919 in the Poplar Sub-District of the Metropolitan Borough of Poplar, classified according to localities.

Names of localities adopted for the purpose of these statistics: public institutions being shown as separate localities.	1st Quarter	2nd Quarter	3rd Quarter	4th Quarter	Total.
Poplar Sub-District	135	74	66	91	366
Union Workhouse	16	9	10	5	40
Baffin Buildings
Council Buildings
Grosvenor Buildings	9	...	2	4	15
Hanbury Buildings	1	1
Hudson Buildings	1	...	2	...	3
Montreal Buildings
Ontario Buildings	1	1
Ottawa Buildings	1	1	...	2
Prestage Buildings
Quebec Buildings	2	2
Toronto Buildings	1	...	1
Winnipeg Buildings
River Thames	2	...	2	3	7
East India Docks	1	1
London Graving Dock
West India Docks	2	2	1	2	7
South-West India Docks
Poplar Dock, G.W.R.
Millwall Docks	2	...	2	...	4
Orchard House Dry Dock	1	1
Limehouse Cut
Highway
Trinity Wharf
Bow Creek
Police Station
	169	88	85	109	451
Deaths occurring outside the sub-district among persons belonging thereto* +	116	84	84	109	393 +
Deaths occurring within the sub-district among persons not belonging thereto —	11	8	9	6	34 —
Deaths at all ages—nett	274	164	160	212	810

* Including 215 deaths in the Bromley Sub-District:—Sick Asylum, 179; Poplar Hospital, 29; and Bow Institution, 6; Bromley House Institution, 1.

TABLE II.

Deaths during the year 1919 in the BROMLEY Sub-District of the Metropolitan Borough of Poplar, classified according to localities.

Names of localities adopted for the purpose of these statistics: public institutions being shown as separate localities.				1st Quarter	2nd Quarter	3rd Quarter	4th Quarter	Total.
Bromley Sub-District	161	85	63	123	432
Sick Asylum	271	172	138	193	774
Bow Institution	86	56	34	10	186
Bromley House Institution	47	13	8	14	82
Poplar Hospital	24	26	38	42	130
Adelaide Buildings
Melbourne Buildings
Sydney Buildings
River Lee	1	1	1	...	3
Limehouse Cut
Highway
Bow Creek	1	1
Hawthorn Buildings	1	1
				591	354	282	382	1609
Deaths occurring outside the sub-district among persons belonging thereto* +				38	43	38	44	163+
Deaths occurring within the sub-district among persons not belonging thereto —				341	215	160	186	902—
Deaths at all ages—nett				288	182	160	240	870

* Including 11 deaths in the Poplar and Bow Sub-Districts, viz.:—Union Workhouse, Poplar, 10; and Bow Sub-District, 1.

TABLE III.

Deaths during the year 1919 in the Bow Sub-District of the Metropolitan Borough of Poplar, classified according to localities.

Names of localities adopted for the purpose of these statistics: public institutions being shown as separate localities.				1st Quarter	2nd Quarter	3rd Quarter	4th Quarter	Total.
Bow Sub-District	112	43	48	69	272
Highway	1	1	...	2
River Lee	1	1
Duckett's Canal	1	1
Bow Station, N. L. Ry.	1	...	1
				112	45	50	70	277
Deaths occurring outside the sub-district among persons belonging thereto* +				83	58	37	82	260+
Deaths occurring within the sub-district among persons not belonging thereto —				1	1	2	—	4—
Deaths at all ages—nett				194	102	85	152	533

* Including 165 deaths in other parts of the Borough (Poplar and Bromley Sub-Districts). viz.:—Poplar Union Workhouse 7; Sick Asylum, 155; and Bow Institution, 2; Poplar Hospital, 1.

DEATHS FROM DROWNING, ETC., AND DEATHS OF PERSONS OF UNKNOWN ADDRESSES INCLUDED IN THE MORTALITY STATISTICS.

The following deaths have been included in the Mortality Statistics of the respective Sub-districts as there is no reason for believing that such deaths will be shown in the Mortality Tables of any other District :—

POPLAR (SUB-DISTRICT).

17th June.	West India Docks.	Pantryman on s.s. <i>Ingoma</i> . Native of Calcutta.	Male, 60.	Found dead. Heart failure due to heart disease. Nat. Inq.
30th Sept.	Millwall Docks.	Unknown.	Male, about 60	Found dead. Suffocation by drowning but how he got into the water and was so drowned the evidence fails to prove. Inq.
25th Oct.	East India Docks.	Carpenter on s.s. <i>City of Agra</i> . Native of Russian Finland.	Male, 51.	Violent. Strangulation with a leather belt over an air pipe in his berth on board ship. Suicide whilst of unsound mind. Inq.
31st Oct.	River Thames, off Aberdeen Wharf.	Unknown.	Male, about 55	Found dead. Suffocation by drowning, but how he came into the water and was so drowned the evidence fails to prove. Inq.
8th Dec.	s.s. <i>Taikau Maru</i> , Orchard House Dry Dock.	Ship's Fireman. Native of Japan.	Male, 22.	Found dead. Pleurisy and pneumonia. Nat. Inq.
12th Dec.	West India Docks.	Ship's Fireman. late of Prince Edward's Island, Canada.	Male, 38.	Violent. Suffocation by drowning caused by falling overboard while returning to his ship at night, while under the influence of drink. Acc. Inq.
29th Dec.	River Thames, off De Bas' Wharf.	Unknown.	Male, about 10 mins.	Found dead. Suffocation, but how caused and under what circumstances the child was born and died the evidence fails to prove. Inq.

BROMLEY (SUB-DISTRICT).

17th Mar.	Poplar Hospital.	Seaman, Native Male, 40. of India.	Violent. Fracture of skull and other injuries caused by slipping off the wooden casing of the funnel of the s.s. <i>Field Marshall</i> lying in the East India Docks. Acc. Inq.
8th June.	Bow Creek.	Unknown.	Male, about 25. Violent. Suffocation from drowning, but whether he was of sound mind or not there is no evidence to show. Inq.
4th Nov.	Poplar Hospital.	Seaman. Native Male, 34. of Japan.	Found dead. Heart failure due to arterio sclerosis. Nat. Inq.

TABLE IV.

Vital Statistics of Whole District during 1919 and Previous Years.

POPLAR (WHOLE BOROUGH).

Year.	Population estimated to middle of each Year.	Births.			Total Deaths Registered in the District.		Transferable Deaths†		Nett Deaths belonging to the District.			
		Uncorrected Number.	Nett.		Number.*	Rate.	of Non-residents registered in the District.	of Residents not registered in the District.	Under 1 Year of Age.		At all Ages.	
			Number.	Rate.					Number.*	Rate per 1000 Nett Births.	Number.*	Rate.
1	2	3	4	5	6	7	8	9	10	11	12	13
1914 ..	160,839	4884	5059	31.4	2694	16.7	438	520	593	117	2776	17.2
1915 ...	156,247	4585	4687	29.9	3139	20.0	587	507	628	134	3059	19.5
1916 ...	$\left\{ \begin{array}{l} 155,095\frac{1}{2} \\ 168,746\frac{1}{2} \end{array} \right.$	4393	4543	26.9	2782	17.9	731	474	472	103	2525	16.2
1917 ..	$\left\{ \begin{array}{l} 143,443\frac{1}{2} \\ 159,898\frac{1}{2} \end{array} \right.$	3578	3700	23.1	2812	19.6	901	506	352	95	2417	16.8
1918 ...	$\left\{ \begin{array}{l} 139,530\frac{1}{2} \\ 156,338\frac{1}{2} \end{array} \right.$	2901	3203	20.4	3526	25.2	896	548	344	107	3178	22.7
1919	$\left\{ \begin{array}{l} 153,644\frac{1}{2} \\ 160,051\frac{1}{2} \end{array} \right.$	3671	3949	24.6	2337	15.2	549	425	328	83	2213	14.4

NOTES.—This Table is arranged to show the gross births and deaths in the borough and the births and deaths properly belonging to it with the corresponding rates. The rates are calculated per 1000 of the estimated gross population.

* In Column 6 are included the whole of the deaths registered during the year as having actually occurred within the borough, but excluding the deaths of soldiers and sailors that have occurred in hospitals and institutions in the district.

In Column 12 are entered the number in Column 6, corrected by subtraction of the number in Column 8 and by addition of the number in Column 9. Deaths in Column 10 are similarly corrected by subtraction of the deaths under 1, included in the number given in Column 8, and by addition of the deaths under 1 included in the number given in Column 9.

† "Transferable Deaths" are deaths of persons who, having a fixed or usual residence in England or Wales, die in a district other than that in which they resided. The deaths of persons without fixed or usual residence—e.g., casuals—are not included in Columns 8 or 9, except in certain instances under 3 (b) below.

The following special cases arise as to Transferable Deaths:—

(1) Persons dying in institutions for the sick or infirm, such as hospitals, lunatic asylums, workhouses and nursing homes (but not almshouses) are regarded as residents of the district in which they had a fixed or usual residence at the time of admission. If the person dying in an institution had no fixed residence at the time of admission, the death is not transferable. If the patient has been directly transferred from one such institution to another, the death is transferable to the district of residence at the time of admission to the first institution.

(2) The deaths of infants born and dying within a year of birth in an institution to which the mother was admitted for her confinement are referred to the district of fixed or usual residence of the parent.

(3) Deaths from violence are referred (a) to the district of residence, under the general rule; (b) if this district is unknown, or the deceased had no fixed abode, to the district where the accident occurred, if known; (c) failing this, to the district where death occurred, if known; and (d) failing this, to the district where the body was found.

Area of District in acres	Total population at all ages	... 162,442	} At Census of 1911.
(land and inland	Number of inhabited houses	... 22,472	
water) ...	Average number of persons per house	7.22	
	Total families or separate occupiers	... 35,158	

† See italics, page 2.

TABLE V.

Vital Statistics during 1919 and Previous Years.

POPLAR SUB-DISTRICT.

Year.	Population estimated to middle of each Year.	Births.			Total Deaths Registered in the District.		Transferable Deaths†		Nett Deaths belonging to the District.				
		Uncorrected Number.	Nett.		Number.*	Rate.	of Non-residents registered in the District.	of Residents not registered in the District.	Under 1 Year of Age.		At all Ages.		
			Number.	Rate.					Number.*	Rate per 1000 Nett Births.	Number.*	Rate.	
1	2	3	4	5	6	7	8	9	10	11	12	13	
1914	...	55,869	1634	1687	30.1	555	8.9	40	451	183	108	966	17.2
1915	...	54,274	1579	1604	29.5	708	13.0	64	523	221	137	1167	21.5
1916	...	{ 53,874† 58,616†	1509	1575	26.8	543	10.0	57	434	164	104	920	17.0
1917	...	{ 49,826† 55,543†	1267	1300	23.4	517	10.3	66	464	123	95	915	18.3
1918	...	{ 48,467† 54,306†	1024	1134	20.8	680	14.0	42	519	128	112	1157	23.87
1919	...	{ 53,371† 55,596†	1347	1450	26.0	451	8.45	34	393	120	82	810	15.17

Area of Sub-District in } Total population at all ages ... 56,393 } At
 acres (land and inland } 1166.2 Number of inhabited houses ... 8,201 } Census,
 water) ... } Average number of persons per house 6.87 } of 1911.
 Total families or separate occupiers ... 12,044.

*† See notes, page 24.

† See italics, page 24

TABLE VI.

Vital Statistics during 1919 and Previous Years.

BROMLEY SUB-DISTRICT.

Year.	Population estimated to middle of each Year.	Births.			Total Deaths Registered in the District.		Transferable Deaths†		Nett Deaths belonging to the District.			
		Uncorrected Number.	Nett.		Number.*	Rate.	of Non-residents registered in the District.	of Residents not registered in the District.	Under 1 Year of Age.		At all Ages.	
			Number.	Rate.					Number.*	Rate per 1000 Nett Births.	Number.*	Rate.
1	2	3	4	5	6	7	8	9	10	11	12	13
1914 ...	64,397	2093	2189	33·9	1784	27·7	882	223	259	118	1125	17·4
1915 ..	62,558	1937	1992	31·8	2052	32·8	1084	187	241	121	1155	18·4
1916 ...	(62,097+ 67,562+)	1846	1890	27·9	1941	31·2	1146	193	210	111	988	15·9
1917 ...	(57,432+ 64,019+)	1488	1533	23·9	2030	35·3	1278	211	149	97	963	16·7
1918 ...	(55,865+ 62,594+)	1192	1337	21·3	2431	43·5	1397	213	142	106	1247	22·3
1919 ...	(61,516 64,083)	1514	1634	25·4	1609	26·1	902	163	132	80	870	14·14

Area of Sub-District in }
 acres (land and inland } 605·8
 water) ... }
 Total population at all ages ... 65,226 } At
 Number of inhabited houses ... 8,721 } Census
 Average number of persons per house 7·47 } of 1911.
 Total families or separate occupiers ... 14,256.

*† See notes, page 24.

‡ See italics, page 2.

TABLE VII.

Vital Statistics during 1919 and Previous Years.

BOW SUB-DISTRICT.

Year.	Population estimated to middle of each Year.	Births.			Total Deaths Registered in the District.		Transferable Deaths†		Nett Deaths belonging to the District.			
		Uncorrected Number.	Nett.		Number.*	Rate.	of Non-residents registered in the District.	of Residents not registered in the District.	Under 1 Year of Age.		At all Ages.	
			Number.	Rate.					Number.*	Rate per 1000 Nett Births.	Number.*	Rate.
1	2	3	4	5	6	7	8	9	10	11	12	13
1914 ...	40,573	1157	1183	29·1	355	8·7	4	334	151	127	685	16·8
1915 ...	39,415	1069	1091	27·6	379	9·6	3	361	166	152	737	18·6
1916 ...	{ 39,124+ 42,568+}	1038	1078	25·3	298	7·6	2	321	98	90	617	15·7
1917 ...	{ 36,185+ 40,336+}	823	867	21·4	265	7·3	4	278	80	92	539	14·8
1918 ...	{ 35,198+ 39,438+}	685	732	18·5	415	11·7	2	361	74	101	774	21·3
1919 ...	{ 38,757+ 40,372+}	810	865	21·4	277	7·14	4	260	76	87	533	13·75

Area of Sub-District in acres (land and inland water) ... } 555·7
 Total population at all ages ... 40,823 } At
 Number of inhabited houses ... 5,550 } Census
 Average number of persons per house 7·35 } of 1911.
 Total families or separate occupiers ... 8,858.

*† See notes, page 24.

‡ See italics, page 2.

NOTES TO TABLES VIII., IX., X., XI., XII., XIII., XIV., XV. & XVI.

NOMENCLATURE OF DISEASES.

All "Transferable Deaths" of residents, *i.e.*, of persons resident in the district who have died outside it, are *included* with the other deaths in columns 2-10, Tables VIII., IX., X. and XI., and Infantile Mortality Tables XIII., XIV., XV., and XVI. Transferable deaths of non-residents, *i.e.*, of persons resident elsewhere in England and Wales, who have died in the district, are in like manner *excluded* from these columns. For the precise meaning of the term "transferable deaths" see footnote to Table IV.

All deaths occurring in institutions for the sick and infirm situated within the district, whether of residents or of non-residents, are entered in Table XII.

All deaths certified by registered medical practitioners and all inquest cases are classed as "Certified"; all other deaths are to be regarded as "Uncertified."

Under the heading of "Diphtheria" and "Croup" are included all deaths from Croup except those certified as due to "spasmodic," "stridulous," "catarrhal" or "false" croup.

Under the heading of "Tuberculous Meningitis" are included deaths from Acute Hydrocephalus.

Under the heading of "Cancer" are included deaths from Carcinoma, Scirrhus, Epithelioma, Rodent ulcer, Sarcoma, Cancer, and Malignant disease.

Under the heading of "Diarrhœa" and "Enteritis" are included deaths registered as due to Epidemic diarrhœa, Epidemic enteritis, Infective enteritis, Zymotic enteritis, Summer diarrhœa, Choleraic diarrhœa, Cholera (other than Asiatic), Gastro-enteritis, Gastro-intestinal catarrh, Muco-enteritis, Colitis, &c. Deaths from diarrhœa secondary to some other well-defined disease are included under the latter.

Under the heading of "Alcoholism" are included deaths from Delirium tremens, acute and chronic alcoholism.

Under the heading of "Puerperal Fever" are included deaths under such headings as Pyæmia, Septicæmia, Sapræmia, Pelvic peritonitis, Peri- and Endo-metritis occurring in the Puerperium.

Under the heading of "Congenital Debility and Malformation, including Premature birth," are included deaths from Atrophy and marasmus of infants, and want of breast-milk, but not from Atelectasis.

TABLE VIII
METROPOLITAN BOROUGH OF POPLAR
THE BOROUGH.

Causes of, and Ages at, Death during the Year 1919.

Causes of Death (see page 28).		Nett Deaths in whole Borough at subjoined Ages.										Nett Deaths in Public Institutions and certain localities within and outside Borough (at all ages) belonging thereto.							Nett Total Deaths in Public Institutions, &c.
		All Ages.	Under 1.	1 and under 2.	2 and under 5.	5 and under 15.	15 and under 25.	25 and under 45.	45 and under 65.	65 and upwards.	Poplar Union Workhouse.	Sick Asylum.	Bow Institution.	Bromley House Institution.	Poplar Hospital.	See Footnotes.	Outlying Institutions.		
1		2	3	4	5	6	7	8	9	10									
All causes	{ Certified Uncertified	2212 1	328	85	104	105	122	304	516	648 1	36	563	19	4	57	16	424 1	1119 1	
1	Enteric Fever	6	1	3	1	...	1	...	1	2	3	
2	Small Pox	
3	Measles	7	1	1	3	2	2	1	3	
4	Scarlet Fever	4	2	2	4	4	
5	Whooping Cough	24	1	10	11	2	6	1	...	2	9	
6	Diphtheria and Croup	38	4	7	15	11	1	3	1	...	30	34	
7	Influenza	139	6	4	9	9	17	46	34	14	...	24	1	...	16	41	
8	Erysipelas	9	3	1	...	1	1	3	...	6	2	8	
9	Phthisis (Pulmonary Tuberculosis)	195	5	12	39	80	55	4	...	46	1	...	60	107	
10	Tuberculous Meningitis	17	1	2	6	6	1	1	1	1	...	8	10
11	Other Tuberculous Diseases	10	3	2	1	2	2	...	5	4	9	
12	Cancer, malignant disease	149	12	87	50	1	51	3	1	19	75	
13	Rheumatic Fever	6	1	1	1	2	1	...	2	1	3	
14	Meningitis	17	3	5	2	3	1	2	1	3	3	...	8	14	
15	Organic Heart Disease	193	1	8	12	32	62	78	4	62	8	2	2	*1	22	101	
16	Bronchitis	223	19	3	5	2	...	12	76	106	13	64	1	1	1	...	8	88	
17	Pneumonia (all forms)	215	28	33	18	12	9	34	45	36	1	48	1	...	9	†1	27	87	
18	Other diseases of respiratory organs	23	2	...	2	1	1	3	7	7	...	3	1	†1	1	6	
19	Diarrhoea and Enteritis	82	58	8	4	2	1	9	2	19	26	47	
20	Appendicitis and Typhlitis	11	5	2	3	1	...	3	6	10	
21	Cirrhosis of Liver	12	1	1	6	4	...	2	5	7	
21a	Alcoholism	1	1	
22	Nephritis and Bright's Disease	40	1	...	2	4	14	19	...	13	20	33	
23	Puerperal Fever	3	2	1	3	3	
24	Other accidents and diseases of Pregnancy & Parturition	8	1	7	3	4	7	
25	Congenital Debility and Malformation, including Premature Birth	160	156	3	1	2	30	1	...	14	47	
26	Violent Deaths excluding Suicide	88	9	4	7	14	8	12	19	15	2	14	21	¶10	24	71	
27	Suicide	11	2	6	3	§1	1	2	
28	Other Defined Diseases	513	37	4	11	15	16	45	93	292	11	147	6	...	13	**2	105	284	
29	Diseases ill-defined or unknown	9	...	1	2	1	2	3	...	2	5	7	
Total Deaths		2213	328	85	104	105	122	304	516	649	36	563	19	4	57	16	425	1120	
SUB-ENTRIES (included in above figures.)																			
14	Cerebro-spinal Meningitis	10	...	3	2	3	1	1	3	1	...	5	9	
28a	Poliomyelitis...	
28b	Encephalitis...	1	1	1	1	
17a	Pneumonia	123	8	9	3	9	7	27	34	26	1	41	1	...	1	1	12	57	
26a	Murder	2	1	1	1	1	
26b	Potomaine Poisoning	1	1	1	
28c	Anthrax	1	1	1	1	

*West India Docks, Poplar, 1; †S.S. *Moora*, West India Docks, Poplar, 1; ‡S.S. *Taiku Maru*, Orchard Dry Dock, Poplar, 1; ¶West India Docks, Poplar, 2; River Thames, Poplar, 2; Millwall Docks, Poplar, 2; Bow Sub-District, 1; River Lee, Bromley, 1; Bow Creek, Bromley, 1; Duckett's Canal, Bow, 1; §S.S. "City of Agra," East India Docks, Poplar, 1; **River Lee, Bow, 1; Highway, Bow, 1.

TABLE IX.
METROPOLITAN BOROUGH OF POPLAR.
SUB-DISTRICT OF POPLAR.

Causes of, and Ages at, Death during the Year 1919.

Causes of Death (see page 28).		Nett Deaths in whole Sub-District at subjoined Ages.										Nett Deaths in Public Institutions and certain localities within and outside Sub-District (at all ages) belonging thereto.								Nett Deaths in Public Institutions, &c.
		All Ages.	Under 1.	1 and under 2.	2 and under 5.	5 and under 15.	15 and under 25.	25 and under 45.	45 and under 65.	65 and upwards.	Poplar Union Workhouse.	Sick Asylum.	Bow Institution.	Bromley House Institution.	Poplar Hospital.	See Footnotes.	Outlying Institutions.			
1		2	3	4	5	6	7	8	9	10										
All causes	Certified ... Uncertified ...	809 1	120	35	40	45	57	100	187	225 1	19	179	6	1	29	10	177 1	421 1		
1	Enteric Fever ...	2				1	1										1	1		
2	Small Pox ...																			
3	Measles ...	6	1	1	2	2						2					1	3		
4	Scarlet Fever ...																			
5	Whooping Cough ...	12		6	5	1						4			1		1	6		
6	Diphtheria and Croup ...	11	1	1	5	3	1					1					9	10		
7	Influenza ...	51		1	2	6	7	15	14	6		7					6	13		
8	Erysipelas ...	2	1			1											2	2		
9	Phthisis (Pulmonary Tuberculosis) ...	74			1	5	23	25	18	2		17					24	41		
10	Tuberculous Meningitis ...	8	1		3	4									1		3	4		
11	Other Tuberculous Diseases ...	2					1			1							1	1		
12	Cancer, malignant disease... ..	53						5	33	15		17	1				8	26		
13	Rheumatic Fever ...	3				1			2			1						1		
14	Meningitis ...	7	1	2	1	1			2									7		
15	Organic Heart Disease ...	62				1	4	13	19	25	1	1	3	1		*1	9	34		
16	Bronchitis ...	72	5		1			3	25	38	11	20					4	35		
17	Pneumonia (all forms) ...	82	13	13	7	6	3	11	14	15	1	14			4	+1	11	31		
18	Other diseases of respiratory organs ...	5			2		1			2		2			1	+1		4		
19	Diarrhoea and Enteritis ...	33	25	5	1					2		4					14	18		
20	Appendicitis and Typhlitis ...	5					1	1	1			1					1	2		
21	Cirrhosis of Liver ...	7					1		3	3		2					2	4		
21a	Alcoholism ...	1								1										
22	Nephritis and Bright's Disease ...	18						2	8	8		7					9	16		
23	Puerperal Fever ...	1					1					1						1		
24	Other accidents and diseases of Pregnancy & Parturition ...	1						1									1	1		
25	Congenital Debility and Malformation, including Premature Birth ...	62	59	2				1				9			1		4	14		
26	Violent Deaths, excluding Suicide ...	39	4	2	3	7	5	3	11	4	1	3			13	6	9	32		
27	Suicide ...	3							3							1		1		
28	Other Defined Diseases ...	185	9	1	6	6	8	17	35	103	5	47	2		6		49	109		
29	Diseases ill-defined or unknown ...	5		1	1			1	1	1		1					4	5		
Total Deaths ...		810	120	35	40	45	57	100	187	226	19	179	6	1	29	10	178	422		
SUB-ENTRIES (included in above figures).																				
14	Cerebro-spinal Meningitis ...	4		2	1			1							1		2	3		
28a	Polio-myelitis ...																			
17a	Pneumonia ...	44	5	3		4	1	8	12	11	1	10			1	1	6	19		
26a	Murder ...	2	1					1							1			1		
26b	Potomane Poisoning ...	1						1												

*West India Docks; †S.S. *Moora*, West India Docks; ‡S.S. *Taiku Maru*, Orchard House Dry Dock; ¶West India Docks, 2; River Thames, Poplar, 2; Millwall Docks, 2; §S.S. *City of Agra*, East India Docks.

TABLE X.
METROPOLITAN BOROUGH OF POPLAR.

SUB-DISTRICT OF BROMLEY.
Causes of, and Ages at, Death during the Year 1919.

Causes of Death (see page 28).		Nett Deaths in whole Sub-District at subjoined Ages.										Nett Deaths in Public Institutions and certain localities within and outside Sub-District (at all ages) belonging thereto.								Nett Deaths in Public Institutions, &c.
		All Ages.	Under 1.	1 and under 2.	2 and under 5.	5 and under 15.	15 and under 25.	25 and under 45.	45 and under 65.	65 and upwards.	Poplar Union Workhouse.	Sick Asylum.	Bow Institution.	Bromley House Institution.	Poplar Hospital.	See Footnotes.	Outlying Institutions.			
1		2	3	4	5	6	7	8	9	10										
All causes	Certified Uncertified	870	132	36	45	41	38	131	197	250	10	229	11	3	27	3	152	435		
1	Enteric Fever																			
2	Small Pox																			
3	Measles																			
4	Scarlet Fever	4																		
5	Whooping Cough	12	1	4	6	1											4	4		
6	Diphtheria and Croup	13	2	4	4	3											1	3		
7	Influenza	50	4	1	6	3	5	17	9								10	12		
8	Erysipelas	5	2					1	1	1		4					6	15		
9	Phthisis (Pulmonary Tuberculosis)	74			3	6	9	34	20	2		17			1		22	40		
10	Tuberculous Meningitis	6		2	1	2	1										3	3		
11	Other Tuberculous Diseases	6				2	1	1	2			4					2	6		
12	Cancer, malignant disease... ..	58						4	3	20		16	1	1			6	24		
13	Rheumatic Fever	1						1									1	1		
14	Meningitis	8	1	3	1	2			1			2			1		3	6		
15	Organic Heart Disease	79				2	6	16	22	33	2	29	4	1	1		6	43		
16	Bronchitis	99	11	3	3	2		5	32	43	1	27	1	1	1		2	33		
17	Pneumonia (all forms)	92	12	16	8	6	1	18	19	12		17	1		5		14	37		
18	Other diseases of respiratory organs	9	1					2	2	4		1					1	2		
19	Diarrhoea and Enteritis	22	16		2			1		3	1	7					6	14		
20	Appendicitis and Typhlitis	4					3		1			1			1		2	4		
21	Cirrhosis of Liver	3							3								2	2		
21a	Alcoholism																			
22	Nephritis and Bright's Disease	17			1		2	2	4	8		4					8	12		
23	Puerperal Fever	1					1					1						1		
24	Other accidents and diseases of Pregnancy & Parturition	6					1	5				3					3	6		
25	Congenital Debility and Malformation, including Premature Birth	62	62								2	14					4	20		
26	Violent Deaths, excluding Suicide	31	3	1	4	3	2	7	6	5		7			8	3	7	25		
27	Suicide	5						2	1	2							1	1		
28	Other Defined Diseases	200	17	2	3	7	6	15	39	111	4	64	4		7		37	116		
29	Diseases ill-defined or unknown	3			1				1	1							1	1		
Total Deaths		870	132	36	45	41	38	131	197	250	10	229	11	3	27	3	152	435		
SUB-ENTRIES (included in above figures).																				
14	Cerebro-spinal Meningitis	4		1	1	2						2					2	4		
28a	Polio-myelitis																			
17a	Pneumonia	50	3	5	2	5	1	13	14	7		15	1				5	21		
28b	Anthrax	1						1									1	1		

¶Bow Sub-District, 1; River Lee, Bromley, 1; Bow Creek, Bromley, 1.

TABLE XI
METROPOLITAN BOROUGH OF POPLAR.

SUB-DISTRICT OF BOW.

Causes of, and Ages at, Death during the Year 1919.

Causes of Death (see page 28).											Nett Deaths in Sub-District at subjoined Ages.								Nett Deaths in Public Institutions and certain localities within and outside Sub-Districts (at all ages) belonging thereto.								Nett Deaths in Public Institutions, &c.						
											All Ages.	Under 1.	1 and under 2.	2 and under 5.	5 and under 15.	15 and under 25.	25 and under 45.	45 and under 65.	65 and upwards.	Poplar Union Workhouse.	Sick Asylum.	Bow Institution.	Bromley House Institution.	Poplar Hospital.	See Footnotes.	Outlying Institutions.							
1											2	3	4	5	6	7	8	9	10														
All causes { Certified											533	76	14	19	19	27	73	132	173	7	155	2	...	1	3	95	263						
{ Uncertified																																	
1 Enteric Fever											4	2	1	...	1	...	1	1	2					
2 Small Pox					
3 Measles											1	1					
4 Scarlet Fever					
5 Whooping Cough					
6 Diphtheria and Croup											14	1	2	6	5	1	11	12					
7 Influenza											38	2	2	1	...	5	14	11	3	...	9	4	13					
8 Erysipelas											2	2	...	2	2					
9 Phthisis (Pulmonary Tuberculosis)											47	1	1	7	21	17	12	14	26					
10 Tuberculous Meningitis											3	2	1	1	2	3					
11 Other Tuberculous Diseases											2	1	1	1	2					
12 Cancer, malignant disease... ..											38	3	20	15	1	18	1	5	25					
13 Rheumatic Fever											2	1	1	...	1	1					
14 Meningitis											2	1	1	1	1					
15 Organic Heart Disease											52	1	5	2	3	21	20	1	4	1	...	1	7	14					
16 Bronchitis											52	3	...	1	4	19	25	1	17	2	20					
17 Pneumonia (all forms)											41	3	4	3	...	5	5	12	9	...	17	2	19					
18 Other diseases of respiratory organs											9	1	1	...	1	5	1					
19 Diarrhoea and Enteritis											27	17	3	1	1	1	4	1	8	6	15					
20 Appendicitis and Typhlitis											4	1	1	1	1	...	1	3	4					
21 Cirrhosis of Liver											2	1	...	1	1	1					
21a Alcoholism					
22 Nephritis and Bright's Disease											5	2	3	...	2	3	5					
23 Puerperal Fever											1	1	1	1					
24 Other accidents and diseases of Pregnancy & Parturition											1	1					
25 Congenital Debility and Malformation, including Premature Birth											36	35	1	7	6	13					
26 Violent Deaths, excluding Suicide											18	2	1	...	4	1	2	2	6	1	4	1	14					
27 Suicide											3	2	1					
28 Other Defined Diseases											128	11	1	2	2	2	13	19	78	2	36	**2	19	59					
29 Diseases ill-defined or unknown											1	1	...	1	1					
Total Deaths											533	76	14	19	19	27	73	132	173	7	155	2	...	1	3	95	263						
SUB-ENTRIES (included in above figures).																																	
14 Cerebro-spinal Meningitis											2	1	1	1	1	2						
28a Poliomyelitis					
28b Encephalitis... ..											1	1	1	1					
17a Pneumonia											29	...	1	1	...	5	6	8	8	...	16	1	17					

¶ Duckett's Canal, Bow; ** River Lea, Bow, 1; Highway, Bow, 1.

TABLE XII.

METROPOLITAN BOROUGH OF POPLAR.

Total Deaths (at all ages) in Public Institutions within the Borough.

(Resident and Non-Resident included.)

Causes of Death (see page 28).					Poplar Union Workhouse	Sick Asylum.	Bow Institution.	Bromley House Institution.	Poplar Hospital.	Total deaths in Public Institu- tions within the Borough.
All causes	Certified	40	774	186	82	130	1212
	Uncertified
1	Enteric Fever	2	2
2	Small Pox
3	Measles	4	4
4	Scarlet Fever
5	Whooping Cough	11	1	12
6	Diphtheria and Croup	3	1	4
7	Influenza	30	3	...	1	34
8	Erysipelas	7	7
9	Phthisis (Pulmonary Tuberculosis)	77	5	3	3	88
10	Tuberculous Meningitis	3	2	5
11	Other Tuberculous Diseases	8	8
12	Cancer, malignant disease	2	68	15	3	4	92
13	Rheumatic Fever	2	1	3
14	Meningitis	3	3	6
15	Organic Heart Disease	5	84	78	12	5	184
16	Bronchitis	13	82	26	9	2	132
17	Pneumonia (all forms)	1	70	2	6	12	91
18	Other diseases of respiratory organs	6	2	...	1	9
19	Diarrhoea and Enteritis	2	24	...	1	1	28
20	Appendicitis and Typhlitis	2	4	6
21	Cirrhosis of Liver	4	1	5
21a	Alcoholism
22	Nephritis and Bright's Disease	15	6	4	...	25
23	Puerperal Fever	3	3
24	Other accidents and diseases of Pregnancy and Parturition	3	3
25	Congenital Debility and Malformation, including Premature Birth	2	38	...	1	2	43
26	Violent Deaths, excluding Suicide	2	20	2	1	61	86
27	Suicide	1	1	...	2
28	Other Defined Diseases	12	203	45	41	27	328
29	Diseases ill-defined or unknown	2	2
Total Deaths					40	774	186	82	130	1212
SUB-ENTRIES (included in above figures).										
14	Cerebro-spinal Meningitis	3	1	4
28a	Poliomyelitis
17	Pneumonia	1	57	1	4	2	65

TABLE XIII.
METROPOLITAN BOROUGH OF POPLAR.

WHOLE BOROUGH.

Infantile Mortality during the Year 1919.

Nett Deaths from stated Causes in Weeks and Months under One
Year of Age.

Causes of Death (see page 28).				Under 1 week.	1-2 weeks.	2-3 weeks.	3-4 weeks.	Total under 1 month.	1-3 months.	3-6 months.	6-9 months.	9-12 months.	Nett total Deaths under 1 year.
All causes	Certified	89	17	17	14	137	67	48	40	36	328
	Uncertified
Small Pox
Chicken Pox
Measles	1	1
Scarlet Fever
Whooping Cough	1	...	1
Diphtheria and Croup	2	2	4
Erysipelas	2	1	3
Tuberculous Meningitis	1	1
Abdominal Tuberculosis
Other Tuberculous Diseases
Meningitis (not Tuberculous)	1	2	3
Convulsions	1	1	1	1	4	2	2	1	...	9
Laryngitis	1	...	1
Bronchitis	1	...	2	...	3	7	4	1	4	19
Pneumonia (all forms)	1	1	1	3	5	3	9	8	28
Diarrhoea	7	5	4	3	19
Enteritis	1	1	10	10	9	9	39
Gastritis	1	1	2	2	1	...	6
Syphilis	1	1
Rickets	1	1
Suffocation, overlying	2	1	3
Injury at birth	1	1	2	2
Atelectasis	6	2	8	8
Congenital Malformations	11	...	2	2	15	5	3	2	...	25
Premature birth	52	8	9	2	71	11	1	1	...	84
Atrophy, Debility and Marasmus	9	5	2	5	21	11	9	5	1	47
Other Causes	8	8	2	6	2	5	23
Total Deaths				89	17	17	14	137	67	48	40	36	328
Nett Births { Legitimate				...	3,840*	Nett Deaths { Legitimate infants				...	312		
in the year { Illegitimate				...	109*	in the year of { Illegitimate infants				...	16		

* Registrar-General.

TABLE XIV.

METROPOLITAN BOROUGH OF POPLAR.

POPLAR SUB-DISTRICT

Infantile Mortality during the Year 1919.

Nett Deaths from stated Causes in Weeks and Months under One
Year of Age.

Causes of Death (see page 28).				Under 1 week.	1-2 weeks.	2-3 weeks.	3-4 weeks.	Total under 1 month.	1-3 months.	3-6 months.	6-9 months.	9-12 months.	Nett total Deaths under 1 year.
All causes {	Certified	32	6	6	3	47	30	18	12	13	120
	Uncertified										
Small Pox
Chicken Pox
Measles	1	1
Scarlet Fever
Whooping Cough
Diphtheria and Croup	1	1
Erysipelas	1	1
Tuberculous Meningitis	1	1
Abdominal Tuberculosis
Other Tuberculous Diseases
Meningitis (not Tuberculous)	1	1
Convulsions...	1	1	...	2
Laryngitis
Bronchitis	2	1	...	2	5
Pneumonia (all forms)	1	1	...	2	3	3	3	2	13
Diarrhoea	2	2	2	2	8
Enteritis	8	6	1	2	17
Gastritis	2	...	1	...	3
Syphilis
Rickets
Suffocation, overlying	1	1
Injury at birth
Atelectasis	1	1	1
Congenital Malformations	2	...	2	...	4	3	1	2	...	10
Premature birth	23	4	2	1	30	5	35
Atrophy, Debility and Marasmus	4	1	1	2	8	4	1	1	...	14
Other Causes	2	2	...	2	1	1	6
Total Deaths	32	6	6	3	47	30	18	12	13	120

Nett Births { Legitimate .. 1,393 Nett Deaths { Legitimate infants .. 112
in the year { Illegitimate .. 57 in the year of { Illegitimate infants .. 8

TABLE XV.

METROPOLITAN BOROUGH OF POPLAR.

BROMLEY SUB-DISTRICT.

Infantile Mortality during the Year 1919.

Nett Deaths from stated Causes in Weeks and Months under One
Year of Age.

Causes of Death (see page 28).				Under 1 week.	1-2 weeks.	2-3 weeks.	3-4 weeks.	Total under 1 month.	1-3 months.	3-6 months.	6-9 months.	9-12 months.	Nett total Deaths under 1 year.
All causes	Certified	36	8	6	9	59	25	15	19	14	132
	Uncertified										
Small Pox
Chicken Pox
Measles
Scarlet Fever
Whooping Cough	1	...	1
Diphtheria and Croup	2	...	2
Erysipelas	1	1	2
Tuberculous Meningitis
Abdominal Tuberculosis
Other Tuberculous Diseases
Meningitis (not Tuberculous)	1	...	1
Convulsions	1	...	1	2	1	3
Laryngitis	1	...	1
Bronchitis	1	1	5	2	1	2	11
Pneumonia (all forms)	1	1	1	...	4	6	12
Diarrhoea	2	...	1	...	3
Enteritis	1	2	4	6	13
Gastritis	1	1	...	1	2
Syphilis
Rickets	1	1
Suffocation, overlying	1	1
Injury at birth	1	1	2	2
Atelectasis	4	2	6	6
Congenital Malformations	2	1	3	1	1	5
Premature birth	21	3	5	1	30	5	35
Atrophy, Debility and Marasmus	3	2	1	3	9	6	4	3	...	22
Other Causes	4	4	1	3	1	...	9
Total Deaths	36	8	6	9	59	25	15	19	14	132

Nett Births { Legitimate ... 1,594
in the year { Illegitimate ... 40

Nett Deaths { Legitimate infants ... 125
in the year of { Illegitimate infants ... 7

TABLE XVI.

METROPOLITAN BOROUGH OF POPLAR.

BOW SUB-DISTRICT.

Infantile Mortality during the Year 1919.

Nett Deaths from stated Causes in Weeks and Months under One Year of Age.

Causes of Death (see page 28).				Under 1 week.	1-2 weeks.	2-3 weeks.	3-4 weeks.	Total under 1 month.	1-3 months.	3-6 months.	6-9 months.	9-12 months.	Nett total Deaths under 1 year.
All causes	{	Certified	21	3	5	2	31	11	15	9	9	76
		Uncertified										
Small Pox
Chicken Pox
Measles
Scarlet Fever
Whooping Cough
Diphtheria and Croup	1	1
Erysipelas
Tuberculous Meningitis
Abdominal Tuberculosis
Other Tuberculous Diseases
Meningitis (not Tuberculous)	1	1
Convulsions...	1	...	1	...	2	1	1	4
Laryngitis
Bronchitis	2	...	2	...	1	3
Pneumonia (all forms)	1	...	2	...	3
Diarrhoea	3	3	1	1	8
Enteritis	1	1	1	2	4	1	9
Gastritis	1	1
Syphilis	1	1
Rickets
Suffocation, overlying	1	1
Injury at birth
Atelectasis	1	1	1
Congenital Malformations	7	1	8	1	1	10
Premature birth	8	1	2	...	11	1	1	1	...	14
Atrophy, Debility and Marasmus	2	2	4	1	4	1	1	11
Other Causes	2	2	1	1	...	4	8
Total Deaths	21	3	5	2	31	11	15	9	9	76

Nett Births { Legitimate ... 853
in the year { Illegitimate ... 12

Nett Deaths { Legitimate infants ... 75
in the year { Illegitimate infants ... 1

TABLE XVII. (1919).

CITIES AND BOROUGHES.	Estimated population to the middle of 1919.	Notifica- tions. Annual rate per 1,000 persons living.	Births. Annual rate per 1,000 persons living.	Zymotic Deaths. Annual rate per 1,000 persons living.	Death- rate per 1,000 living.	Deaths of Infants under one year to 1,000 births.
LONDON	4,358,309	.	18.5	0.7*	13.8	89
<i>West Districts.</i>						
Paddington	143,938	.	15.4	0.6	13.2	91
Kensington	188,078	.	13.5	0.9	12.8	113
Hammersmith	130,981	.	16.5	0.8	13.0	102
Fulham	158,904	.	18.6	0.6	12.2	83
Chelsea	65,815	.	13.3	0.6	14.1	87
City of Westminster	127,533	.	12.0	0.4	14.2	87
<i>North Districts.</i>						
St. Marylebone	97,953	.	14.6	1.6	15.9	98
Hampstead	88,012	.	12.7	0.1	11.2	81
St. Pancras	219,434	.	16.7	0.5	13.4	88
Islington	323,034	.	18.3	0.4	14.0	83
Stoke Newington	50,954	.	16.8	0.6	12.2	62
Hackney	216,736	.	18.6	0.7	13.0	82
<i>Central Districts.</i>						
Holborn	38,156	.	13.6	0.3	16.4	96
Finsbury	75,291	.	20.2	0.7	15.4	89
City of London	13,893	.	9.6	0.2	14.4	108
<i>East Districts.</i>						
Shoreditch	102,000	.	20.3	0.9	15.7	110
Bethnal Green	119,085	.	22.3	1.4	14.2	85
Stepney	232,506	.	22.5	0.9	14.3	79
Poplar	153,644	.	24.6	1.0	14.1	83
<i>South Districts.</i>						
Southwark	179,971	.	21.9	0.9	15.1	95
Bermondsey	124,239	.	20.4	0.9	14.1	99
Lambeth	282,322	.	25.8	0.7	14.8	84
Battersea	159,316	.	18.5	0.6	12.9	74
Wandsworth	331,759	.	16.4	0.4	11.3	66
Camberwell	273,820	.	18.1	.	12.7	84
Deptford	111,205	.	20.5	0.7	13.0	85
Greenwich	98,484	.	18.8	0.8	13.7	95
Lewisham	167,754	.	19.6	0.2	11.4	61
Woolwich	146,503	.	17.3	0.5	11.5	86

* This figure was furnished by the *Lancet*, the remainder of the rates for London being supplied by the Registrar-General.

The following death rates for the year 1919 are interesting when compared with one another :—

					Annual Rate per 1,000 persons living.	Deaths of Children under one year of age to 1,000 Births.
Poplar Borough	14.40	83†
Poplar (Sub-District)	15.17	82
Bromley	14.14	80
Bow	13.75	87
England and Wales	13.8	89
96 Great Towns‡	13.8	93
148 Smaller Towns	12.6	90
London	13.4	85
Liverpool	17.0	110
Manchester	13.7	97
Edinburgh	16.5	117
Glasgow	16.4	114
Dublin (City)...	20.9	141
Belfast	17.9	113

† See Footnote ** page 8.

‡ Including London.

TABLE XVIII

BIRTH-RATE, DEATH-RATE, AND ANALYSIS OF MORTALITY DURING THE YEAR 1919.

	BIRTH-RATE PER 1,000 TOTAL POPULATION.	ANNUAL DEATH-RATE PER 1,000 CIVILIAN POPULATION.								RATE PER 1,000 BIRTHS.		PERCENTAGE OF TOTAL DEATHS.*			
		All Causes	Enteric Fever.	Small-pox.	Measles.	Scarlet Fever.	Whooping- cough.	Diphtheria.	Violence.	Diarrhoea and Enteritis (under 2 years).	Total Deaths under One Year.	Deaths in Public Institutions.	Certified Causes.	Inquest Cases.	Uncertified Causes of Death.
England and Wales	18.5	13.8	0.01	0.00	0.10	0.03	0.07	0.13	0.47	9.59	89	23.9	92.5	6.2	1.3
96 Great Towns including London (Census Populations exceeding 50,000)	19.0	13.8	0.01	0.00	0.13	0.04	0.07	0.14	0.45	12.24	93	29.2	92.3	6.9	0.8
148 Smaller Towns (Census Populations 20,000-50,000)	18.3	12.6	0.01	0.00	0.10	0.03	0.08	0.12	0.29	8.67	90	16.6	93.6	4.9	1.5
London	18.3	13.4	0.01	0.00	0.08	0.03	0.05	0.18	0.47	16.22	85	44.7	91.2	8.6	0.2
Poplar Borough	24.6	14.4	0.03	0.00	0.04	0.02	0.15	0.24	0.64	16.71	83	49.8	99.9	12.83	0.04
Poplar Sub-District	26.0	15.1	0.03	0.00	0.11	0.00	0.22	0.20	0.78	20.68	82	50.8	99.8	13.70	0.12
Bromley	25.4	14.1	0.00	0.00	0.00	0.06	0.19	0.21	0.58	9.79	80	49.6	100	11.95	0.00
Bow	21.4	13.7	0.10	0.00	0.02	0.00	0.00	0.36	0.54	23.12	87	48.7	100	12.94	0.00

* Non-civilians are included in these figures for England and Wales but not for other areas.

TABLE XIX.

METROPOLITAN BOROUGH OF POPLAR.

BOROUGH OF POPLAR.

Cases of Infectious Disease notified during the Year 1919.

NOTIFIABLE DISEASE.	CASES NOTIFIED IN WHOLE BOROUGH.							Total Cases notified in each Sub- District.				No. of Cases removed to Hospital from each Sub-District.				
	At all Ages.	At Ages—Years.						Poplar.	Bromley.	Bow.	Total.	Poplar.	Bromley.	Bow.	Total Cases Removed.	
		Under 1.	1 to 5.	5 to 15.	15 to 25.	25 to 45.	45 to 65.									65 and upwards.
Small-pox ...	1	1	1	1	1	1
Cholera (C), Plague (P)
Diphtheria (includ- ing Membranous Croup) ...	320	8	109	168	20	15	93	128	99	320	80	117	92	*289
Erysipelas...	128	6	4	16	17	27	30	28	40	47	41	128	18	17	17	†52
Scarlet Fever ...	370	10	96	238	19	7	112	162	96	370	100	149	88	‡337
Typhus Fever
Enteric Fever ...	23	...	2	13	3	4	...	1	11	6	6	23	10	3	5	¶18
Relapsing Fever
Continued Fever...
Puerperal Fever ...	17	3	13	1	...	4	10	3	17	3	10	3	§16
Cerebro-Spinal Meningitis ...	16	3	6	4	2	1	5	9	2	16	6	4	2	**12
Poliomyelitis ...	6	...	5	...	1	2	3	1	6	...	1	...	††1
Acute Encephalitis Lethargica ...	3	2	1	...	3	3	2	††2
Ophthalmia Neo- natorum ...	61	61	27	29	5	61	3	6	1	10
Pulmonary Tuber- culosis ...	579	...	13	92	117	262	88	7	226	202	151	579
Other forms of Tuberculosis ...	257	2	49	166	15	17	4	4	100	102	55	257
Zymotic Enteritis ...	656	164	342	60	9	37	21	23	239	365	52	653
Anthrax ...	1	1	1	...	1	...	1	...	1
Measles ...	438	24	205	202	5	2	211	193	34	438
German Measles ...	54	2	27	21	3	1	21	25	8	54
Pneumonia (all forms)...	235	5	33	22	43	70	41	21	92	104	39	235
Malaria ...	26	10	16	6	6	14	26
Dysentery...	3	3	1	2	...	3
Totals ...	3194	285	891	1062	268	478	186	84	1194	1394	606	3194	223	308	208	739

* See page 66. † See page 62. ‡ See page 63. ¶ See page 64. § See page 61.

** See page 70. †† See page 71. || London Hospital.

TABLE XX.
METROPOLITAN BOROUGH OF POPLAR.
POPLAR SUB-DISTRICT.

Cases of Infectious Disease notified during the Year 1919.

NOTIFIABLE DISEASE.	CASES NOTIFIED IN SUB-DISTRICT.									No. of Cases removed to Hospital from Sub-District.
	At all Ages.	At Ages—Years.								
		Under 1.	1 to 5.	5 to 15.	15 to 25.	25 to 45.	45 to 65.	65 and upwards		
Small-pox	1*	1	1	
Cholera, Plague	
Diphtheria (including Mem- branous Croup)	93	3	28	49	6	7	*80	
Erysipelas	40	2	2	3	8	5	9	11	†18	
Scarlet Fever	112	5	33	64	5	5	‡100	
Typhus Fever	
Enteric Fever	11	...	2	8	...	1	¶10	
Relapsing Fever	
Continued Fever	
Puerperal Fever	4	2	2	§3	
Cerebro-Spinal Meningitis ...	5	1	2	1	...	1	**6	
Poliomyelitis	2	...	1	...	1	
Acute Encephalitis Lethargica ...	3	2	1	...	††2	
Ophthalmia Neonatorum ...	27	27	3	
Pulmonary Tuberculosis ...	226	...	7	34	51	102	29	3	...	
Other forms of Tuberculosis ...	100	2	12	70	7	7	1	1	...	
Zymotic Enteritis	239	64	122	24	3	6	4	16	...	
Measles	211	11	90	106	3	1	
German Measles	21	1	9	9	1	1	
Pneumonia (all forms) ...	92	2	18	8	10	27	16	11	...	
Malaria	6	4	2	
Dysentery	1	1	
Totals	1,194	118	326	376	102	170	60	42	223	

* See page 66. † See page 62. ‡ See page 63. ¶ See page 64
§ See page 61. ** See page 70. †† See page 71.

TABLE XXI.
METROPOLITAN BOROUGH OF POPLAR.
BROMLEY SUB-DISTRICT.

Cases of Infectious Disease notified during the Year 1919.

NOTIFIABLE DISEASE.	CASES NOTIFIED IN SUB-DISTRICT.									No. of Cases removed to Hospital from Sub-District.
	At all Ages.	At Ages—Years.								
		Under 1.	1 to 5.	5 to 15.	15 to 25.	25 to 45.	45 to 65.	65 and upwards.		
Small-pox	
Cholera, Plague	
Diphtheria (including Mem- branous Croup)	128	3	43	70	10	2	*117	
Erysipelas	47	4	1	7	5	11	10	9	†17	
Scarlet Fever	162	5	41	107	7	2	149	
Typhus Fever	
Enteric Fever	6	3	1	2	¶3	
Relapsing Fever	
Continued Fever	
Puerperal Fever	10	1	8	1	...	§10	
Cerebro-Spinal Meningitis	9	2	4	2	1	**4	
Poliomyelitis	3	...	3	††1	
Ophthalmia Neonatorum	29	29	6	
Pulmonary Tuberculosis	202	...	4	33	36	93	3	3	...	
Other forms of Tuberculosis	102	...	21	66	6	6	3	
Zymotic Enteritis	365	85	185	34	6	31	17	7	...	
Anthrax	1	1	1	
Measles	193	11	96	83	2	1	
German Measles	25	1	16	7	1	
Pneumonia (all forms)	104	3	12	11	20	31	20	7	...	
Malaria	6	3	3	
Dysentery	2	2	
Totals	1394	143	426	423	99	196	81	26	308	

* See page 66. † See page 62. ¶ See page 64. § See page 61. ** See page 70.
†† See page 71. || London Hospital.

TABLE XXII.
METROPOLITAN BOROUGH OF POPLAR.
BOW SUB-DISTRICT.

Cases of Infectious Disease notified during the Year 1919.

NOTIFIABLE DISEASE.	CASES NOTIFIED IN SUB-DISTRICT.								No. of Cases removed to Hospital from Sub-District.
	At all Ages.	At Ages—Years.							
		Under 1.	1 to 5.	5 to 15.	15 to 25.	25 to 45.	45 to 65.	65 and upwards.	
Small-pox
Cholera, Plague
Diphtheria (including Mem- branous Croup)	99	2	38	49	4	6	*92
Erysipelas	41	...	1	6	4	11	11	8	†17
Scarlet Fever	96	...	2	67	7	‡88
Typhus Fever
Enteric Fever	6	2	2	1	...	1	¶5
Relapsing Fever
Continued Fever
Puerperal Fever	3	3	§3
Cerebro-Spinal Meningitis ...	2	1	1	**2
Poliomyelitis	1	...	1
Ophthalmia Neonatorum ...	5	5	1
Pulmonary Tuberculosis ...	151	...	2	25	20	64	29	1	...
Other forms of Tuberculosis ...	55	...	16	30	2	4	...	3	...
Zymotic Enteritis	52	15	35	2
Measles	34	2	19	13
German Measles	8	...	2	5	1
Pneumonia (all forms) ...	39	...	3	3	13	12	5	3	...
Malaria... ..	14	3	11
Dysentery
Totals	606	24	139	203	67	112	45	16	208

* See page 66. † See page 62. ‡ See page 63. ¶ See page 64. § See page 61.

** See page 70. †† See page 71.

ZYMOTIC DISEASES.*

NOTIFICATIONS ; INSTITUTIONS ; ERRORS IN DIAGNOSIS ; INFECTIOUS
DISEASES IN MILK SHOPS AND ON HOMEWORKERS' PREMISES.

NOTIFICATIONS.

There were 271 notifications of infectious diseases in Poplar, 366 in Bromley, and 248 in Bow, making a total of 885 for the Borough of Poplar; these do not include 25 second notifications.

In the above figures no deductions have been made for cases removed to the Metropolitan Asylums Board's hospitals, which were certified as not having a notifiable disease.

The notification rate per 1,000 living being :—

		Poplar.		Bromley.		Bow.		Borough of Poplar
1915	..	7.77	..	8.77	..	10.27	..	8.80
1916	..	5.92	..	5.37	..	6.87	..	5.94
1917	..	6.38	..	5.46	..	4.33	..	5.50
1918	..	5.46	..	4.83	..	3.80	..	4.79
1919	..	5.07	..	5.94	..	6.39	..	5.76

* Exclusive of Zymotic Enteritis.

INSTITUTIONS.

Notifications of parishioners from Institutions (excluding cases which had been notified before admission) within the sub-districts of Poplar and Bromley were as follows:—

	Total Cases.	NOTIFICATIONS.								REMOVALS.						
		Zymotic Enteritis.	Chicken-pox.	Ophthalmia Neonatorum.	Scarlatina.	Diphtheria.	Typhoid Fever.	Puerperal Fever.	Erysipelas.	Zymotic Enteritis.	Chicken-pox.	Scarlatina.	Diphtheria.	Typhoid Fever.	Puerperal Fever.	Erysipelas.
Poplar Union Work-house	26	19	1	6	*17	*1	*6
Sick Asylum	1	§1	§1
Bow Institution
Bromley House Institution	1	1	*1
Langley House, 54, East India Dock Road	4	3	1	**3
Poplar Hospital

* Admitted into Sick Asylum.

§ Staff, treated in Sick Asylum

** Admitted to M.A.B. Hospital.

Of the 271 patients notified in Poplar, 220 were removed to hospitals and institutions; of the 366 in Bromley 302 were isolated, and of the 248 in Bow 207 were removed, so that of a total of 885 notifiable diseases in the Borough 729 patients (exclusive of ophthalmia neonatorum) had been removed from their homes.*

ERRORS IN DIAGNOSIS.

Corrected number of notifications and rates—

Poplar	271	—	5	=	266	or	4.98	per 1000 living.
Bromley	366	—	4	=	362	or	5.88	„
Bow	248	—	3	=	245	or	6.32	„
Borough of Poplar	885	—	12	=	873	or	5.68	„

* See Tables XIX.—XXII., pages 46–49.

INFECTIOUS DISEASES IN MILKSHOPS AND HOMEWORKERS' PREMISES.

One case of infectious disease (measles) was connected with a milkshop in the Borough : 0 in Poplar ; 1 in Bromley ; and 0 in Bow. The sale of milk was stopped until after the premises and utensils had been disinfected.

Thirteen premises with outworkers were connected with infectious cases notified : 1 in Poplar, 3 in Bromley, and 9 in Bow—4 measles and 9 other infectious diseases.

No notices were served under the Factory and Workshop Act, 1901, Sections 108 and 110, but, where there was any risk of infection the work was discontinued, and any work found on the premises was disinfected before being returned. Four cases of measles were connected with out-workers' premises : 0 Poplar, 3 Bromley, and 1 Bow.

DISINFECTING DEPARTMENT.

ROOMS AND ARTICLES (INFECTIOUS AND VERMINOUS) DISINFECTED.

The following figures give the number of rooms and articles disinfected :—

Sub-District, &c.	Rooms.	Beds	Mattresses and Palliasses	Pillows.	Bolsters.	Various.	Totals.
Poplar	208	197	141	608	212	2,577	3,735
Bromley	289	288	196	851	295	3,566	5,193
Bow	202	192	154	617	193	2,397	3,553
Totals	699	677	491	2,076	700	8,540	12,484
Miscellaneous	160	246	30	495	154	2,163	3,088
Totals	859	923	521	2,571	854	10,703	15,572
Pulmonary Tuberculosis	289	71	8	204	67	764	1,114
Totals	1,148	994	529	2,775	921	11,467	16,686

Other articles also passed through the Council's apparatus, from the Shelter, Glaucus Street, disinfectors' clothing, overalls, drop-sheets, etc., to the number of 23,069 and 68,675 articles of clothing from verminous persons were disinfected.

Making a total of 108,430 articles.

ELECTROLYTIC DISINFECTING FLUID.

OUTPUT OF FLUID ; DISTRIBUTION OF FLUID ; COST OF MATERIAL AND ELECTRICITY ; BOTTLES, CORKS AND LABELS : TOTAL QUANTITY MANUFACTURED SINCE INSTALLATION OF PLANT ; ESTIMATE FOR THE YEAR ENDED 31ST MARCH, 1919, AND EXPENDITURE FOR YEAR ENDED 31ST MARCH, 1919, AVERAGE EXPENDITURE FOR THREE YEARS ENDED 31ST MARCH, 1919, ESTIMATE FOR YEAR ENDED 31ST MARCH, 1920, AND FOR YEAR ENDING 31ST MARCH, 1921 ; SPRAYING AND CLEANSING FLOORS OF LONDON COUNTY COUNCIL SCHOOLS WITH ELECTROLYTIC DISINFECTING FLUID ; SWIMMING BATHS, THE USE THEREIN OF THE ELECTROLYTIC FLUID ; COMMENTS ON ADVERSE CRITICISMS.

OUTPUT OF FLUID.

At the seven depots the electrolytic fluid was still in great demand by the public.

The output of fluid during each month of the year 1919 was as follows :—

			Manufactured Gallons.		Broken down to Gallons and Distributed.
January	1,140	..	2,280
February	.	..	1,275	..	2,550
March	2,160	..	4,320
April	1,980	..	3,960
May	4,140	..	8,280
June	4,770	..	9,540
July	3,570	..	7,140
August	4,800	..	9,600
September	3,600	..	7,200
October	1,770	..	3,540
November	2,370	..	4,740
December	1,710	..	3,420
Total			33,285	..	66,570

Since the beginning of August, 1914, the fluid has been manufactured of greater strength, being afterwards broken down to half strength for distribution.

DISTRIBUTION OF FLUID

The fluid was distributed as follows:—

1.	Violet Road Depot	28,498 gallons
2.	Bickmore Street Depot	7,215 „
3.	Old Ford Road Depot	4,524 „
4.	Ford Road Depot	3,180 „
5.	Trego Road Depot	3,225 „
6.	Stebondale Street Depot	3,965 „
7.	Millwall Depot	744 „
8.	Public Health Offices	135 „
9.	Poplar Baths	4,166 „
10.	Bow Baths	3,108 „
11.	Millwall Baths	1,143 „
12.	Poplar Town Hall	96 „
13.	Bromley Public Hall	69 „
14.	Works Department	900 „
15.	Guardians' Offices	309 „
16.	Poplar Union Workhouse	1,158 „
17.	Langley House	153 „
18.	Poplar Training School, Hutton ..	18 „
19.	Public Libraries	120 „
20.	Used at Council's Shelter in baths of verminous persons	620 „
21.	London County Council Schools ..	1,103 „
22.	Mortuary, High Street, Poplar ..	528 „
23.	Borough of Poplar Dispensary ..	56 „
24.	Military Guard Posts, etc.	18 „
25.	Private Firms in Borough	1,135 „
26.	Council Offices, Poplar	225 „
27.	East London Federation of Suffragettes	72 „
28.	Kingsley Hall	87 „
Total		<hr/> 66,570 <hr/>

COST OF MATERIAL AND ELECTRICITY.

The cost of material in manufacturing 33,285 (strong) gallons of the electrolytic fluid was as follows:—

	£	s.	d.
Electricity, 8,052 units at 1½d. (with 50-65 per cent. advance) per unit	77	7	9
*Chloride of Magnesium, 4 tons 16 cwts. 2 qrs.	87	0	10
*Salt, 6 tons 17 cwts. 2 qrs.	29	13	3
*Caustic Soda, 8 cwts. 2 qrs. 6 lbs.	19	14	5
Water	2	15	6
<hr/>			
Total cost of materials to produce 33,285 gallons (strong) broken down to 66,570 gallons	£216	11	9
Electric motor for stirring: 203 units ..	0	13	8

BOTTLES, CORES AND LABELS

Bottles	—	—	—
Corks	11	15	6
Labels	2	5	0
<hr/>			
	£14	0	6
<hr/>			

TOTAL QUANTITY MANUFACTURED SINCE INSTALLATION OF PLANT.

Since the installation of the plant, a period of 14 years, 537,504 gallons of fluid have been manufactured (see footnote page 56) at a cost for electricity of £663 16s. 1½d., and materials of £784 13s. 3d., about ½d. per gallon (previous to the war the cost was under ½d. per gallon, but even with the strong fluid which at present is being made and is broken down the cost is still about ½d. per gallon when the gallons are reckoned in bulk)†.

* The price of these materials has considerably increased in recent years.

† See "Comments on Adverse Criticism," Annual Report, 1911.

Year.	Output, gallons.	Material, Chloride of Magnesium, Salt, Caustic Soda and Water. Cost.			Electricity.			Total		
		£	s.	d.	£	s.	d.	£	s.	d.
1906 ..	17,000	17	12	5	15	17	10	33	10	3
1907 ..	15,586	14	16	9	14	13	2	29	9	11
1908 ..	28,280	27	14	7	28	7	10	56	2	5
1909 ..	27,216	23	4	7	29	17	7½	53	2	2½
1910 ..	50,726	47	11	10	50	10	6	98	2	4
1911 ..	53,063	50	17	9	56	16	7½	107	14	4½
1912 ..	54,388	41	7	10	59	14	4½	101	2	2½
1913 ..	66,740	62	7	3	71	0	10½	133	8	1½
1914 ..	68,795†	59	16	11†	75	0	3†	134	17	2†
1915 ..	36,985†	35	19	3†	48	12	0†	84	11	3†
1916 ..	26,790†	74	4	0†	40	3	1†	114	7	1†
1917 ...	27,900†	75	10	4†	44	11	6½†	120	1	10½†
1918 ..	30,750†	114	5	9†	51	2	8†	165	8	5†
1919 ..	33,285†	139	4	0†	77	7	9†	216	11	9†
Total	537,501	£784	13	3	£663	16	1½	£1,448	9	4½

The Public Health Department is not only furnished with the disinfectant and the various institutions of the Council (the public baths, etc.), but the institutions of the Managers of the Sick Asylum and of the Board of Guardians (within and without the Borough) are supplied with an unlimited quantity free if required.

For the Fluid supplied to the Works Department a charge of 1d per gallon is made; the Public Health Department is credited with this amount although no actual monetary transaction takes place.

As applicants now usually bring their own receptacles to the depots, there is also a very appreciable saving in the expense on bottles alone.

For Electrolytic Disinfectant supplied to manufacturers and trading concerns, a charge of 8d. per gallon is made through the Electricity Department, the Electricity Undertaking being allowed an amount of 10 per cent. for establishment charges.

† On page 53 it will be seen that the fluid is made of greater strength and afterwards broken down to half strength for distribution, more electrical current being used.

Gallons distributed:—

1914 ...	88,425
1915 ...	73,970
1916 ...	53,580
1917 ...	55,800
1918 ...	61,500
1919 ...	66,570

The diminution is due to not such a lavish distribution on account of increased prices and difficulty of obtaining materials.

ESTIMATE FOR THE YEAR ENDED 31ST MARCH, 1919, AND EXPENDITURE FOR YEAR ENDED 31ST MARCH, 1919, AVERAGE EXPENDITURE FOR THREE YEARS ENDED 31ST MARCH, 1919, ESTIMATE FOR YEAR ENDED 31ST MARCH, 1920, AND FOR YEAR ENDING 31ST MARCH, 1921.

Electrolytic Disinfectant.		Estimate for year ended 31st March, 1919.		Expenditure for year ended 31st March, 1919.		Average Expenditure for 3 years ended 31st March, 1919.		Estimate for year ending 31st March, 1920.		Estimate for year ending 31st March, 1921.		No.
		£	£	£	£	£	£	£	£	£	£	
1	Wages & War Bonuses (Manufacturing, bottling & delivery to Depots, Guardians' Institutions, and Sick Asylums)	450		476		363		513		620		1
2	Rent, Rates and Insurance—Main Depot	80		66		64		80		80		2
3	Supervision of Plant	15		15		15		15		15		3
4	Electricity and Water	50		84		66		90		90		4
5	Materials (Chemicals)	100		91		75		100		145		5
6	Bottles, Corks, Wax, Labels and Paste	24		48		21		20		50		6
7	Sundries (including Testing Apparatus and Carboys) ...	32		59		29		32		60		7
8	Repairs—Depot... ..	40		46		54		50		100		8
		—831		—885		—687		—900		—1160		
9	Issuing—Wages and War Bonuses—(Old Ford Road, Trego Road, Ford Road, Bickmore Street, West Ferry Road, and Stebondale Street Depots)	408		432		350		483		500		9
10	Issuing—Cartage	50		42		31		30		60		10
11	Rent—Issuing Depots (Ford Road, Trego Road and Stebondale Street)	32		31		31		32		32		11
12	Sundries and Petty Expenses	8		13		9		10		20		12
		—498		—523		—421		—555		—612		
		1,329		1,408		1,108		1,455		1,772		
13	Less—Sale of Fluid	60		49		48		60		60		13
			1,269		1,359		1,060		1,395		1,712	

SPRAYING AND CLEANSING FLOORS OF LONDON COUNTY COUNCIL
SCHOOLS WITH ELECTROLYTIC DISINFECTING FLUID.

1,103 gallons were supplied to four London County Council Public Elementary Schools for spraying and cleansing floors of class rooms.

SWIMMING BATHS, THE USE THEREIN OF THE ELECTROLYTIC FLUID.

The fluid continues to be added to the water in the swimming baths in the same quantity and strength as mentioned in the Annual Report for the year 1909, viz., 1 part of Chlorine to 2,000,000 parts of water. 4,166 gallons were supplied to the Poplar Baths, 3,108 gallons to the Bow Baths, and 1,143 gallons to the Island Baths, making a total of 8,417 gallons.

COMMENTS ON ADVERSE CRITICISM RESPECTING THE PROCESS.

See Annual Report, 1911.

In spite of adverse criticism, the process has been a success for fourteen years.

**VERMINOUS CHILDREN ATTENDING SCHOOLS.
LONDON COUNTY COUNCIL (GENERAL POWERS)
ACT, 1907, CHILDREN ACT, 1908.**

NUMBER OF VERMINOUS CHILDREN BATHED ; ITCH CASES.

NUMBER OF VERMINOUS CHILDREN BATHED.

Quarter.	Total number of Cleansings.	Amount.
1919.		£ s. d.
March	1,633	81 13 0
June	1,169	58 9 0
September	635	31 15 0
December	1,180	59 0 0
Totals	4,617	£230 17 0

3,536 children (1,860 boys and 1,676 girls) belonging to the Borough and 553 children (351 boys and 202 girls) outside the Borough were bathed and their clothes disinfested.

Miss Tattersall made 134 visits in connection with verminous school children—11 Poplar, 37 Bromley, and 86 Bow.

Cleansing of Verminous Rooms, see page 90.

ITCH CASES.

The itch cases are included in the verminous cases.

Miss Tattersall made 343 visits in connection with children suffering from itch—112 Poplar, 124 Bromley, and 107 Bow.

CLEANSING OF PERSONS ACT, 1897.

During the year 153 persons (111 men and 42 women) (including 74 from Common Lodging Houses—see below) had applied for baths and for their clothes to be disinfested. Since the notices were posted throughout the Borough, a total of 6,222 persons, exclusive of non-residents, had applied for baths, etc., as mentioned above.

VERMINOUS PERSONS IN COMMON LODGING HOUSES, LONDON COUNTY COUNCIL (GENERAL POWERS) ACT, 1907.

NUMBER OF PERSONS CLEANSED WITHIN AND WITHOUT BOROUGH
FROM COMMON LODGING HOUSES.

The following number of persons from Common Lodging Houses within and without the Borough of Poplar were cleansed at the Council's

Cleansing Station, Glaucus Street, during the year ended 31st December, 1919.

Common Lodging House, etc.	Male.	Female.	Total.
Bow Chambers, 193-7, Bow Road.. ..	42	—	42
St. James' Chambers, 217, High Street, Poplar	21	—	21
	63	—	63
From Common Lodging Houses without Borough of Poplar—			
Whitechapel	—	11	11
	—	11	11

PLAGUE.

No case of this disease was notified during the year.

ANTHRAX, GLANDERS, AND HYDROPHOBIA IN MAN.

ANTHRAX ; LONDON NOTIFICATION OF GLANDERS ORDER, 1907 ;
HYDROPHOBIA.

ANTHRAX.

One case in Bromley was notified. Patient died in the London Hospital.

LONDON NOTIFICATION OF GLANDERS ORDER, 1907.

In accordance with the London (Notification of Glanders) Order, 1907, no notice was received from the Veterinary Inspector of the London County Council of the existence of Glanders at premises in the Borough.

HYDROPHOBIA.

No case of this disease was notified during the year.

PUERPERAL FEVER.*

* See page 28 as to what diseases are included under Puerperal Fever.

NUMBER OF CASES.

Seventeen cases of puerperal fever were notified—4 Poplar, 10 Bromley, and 3 Bow.

REMOVALS.

	Poplar.	Bromley.	Bow.	Totals.
M.A.B. Hospitals ...	1	2	1	4
Sick Asylum ...	2	8	2	12
	—	—	—	—
	3	10	3	16
	—	—	—	—

DEATHS.

Three patients died—1 Poplar, 1 Bromley, and 1 Bow.

SMALL-POX.

One case of small-pox was notified during the year—1 Poplar, 0 Bromley, 0 Bow. Patient recovered.

VACCINATION.

VACCINATION RETURN, 1918 and 1919.

The Vaccination Officer, Mr. Ryan, has kindly furnished me with the following statistics, which are the latest Ministry of Health's Vaccination Return for the year 1918.

1st January to 31st December, 1918.

	Births notified.	Successful Vaccinations.	Insusceptible.	Dead.
Poplar	1,027	281	—	78
Bromley	1,180	238	—	92
Bow	682	148	2	45
	—	—	—	—
Totals	2,889	667	2	215
	—	—	—	—

Approximate figures for 1919

				Births notified.	Insusceptible.
Poplar	1,344	--
Bromley	1,516	3
Bow	809	—
				————	—
				3,669	3
				————	—

Number of certificates of successful vaccination of all ages received for the year 1919—840,

ERYSIPELAS.

128 cases of erysipelas were notified during the year: 40 Poplar, 47 Bromley, and 41 Bow. 52 patients were isolated as follows:—

	Poplar.	Bromley.	Bow.	Totals.
Sick Asylum	17	17	17	51
Nursing Home St. Pancras	1	—	—	1
	—	—	—	—
	18	17	17	52
	—	—	—	—

Nine deaths occurred—2 Poplar, 5 Bromley, and 2 Bow.

SCARLET FEVER.

The number of Scarlet Fever cases notified for the three sub-districts and the deaths which occurred for the past five years were as follows :—

			Poplar.		Bromley.		Bow.		Borough of Poplar.
1915	Cases notified	..	168	..	169	..	142	..	479
	Deaths	4	..	4	..	—	..	8
1916	Cases notified	..	114	..	103	..	91	..	308
	Deaths	0	..	5	..	2	..	7
1917	Cases notified	..	81	..	74	..	50	..	205
	Deaths	1	..	1	..	2	..	4
1918	Cases notified	..	97	..	82	..	52	..	231
	Deaths	0	..	2	..	0	..	2
1919	Cases notified	..	112	..	162	..	96	..	370
	Deaths	—	..	4	..	—	..	4

100 cases in Poplar (Sub-District) were removed to the Metropolitan Asylums Board's Hospitals, 149 in Bromley and 88 in Bow. So that 337 patients out of 370 notified cases in the Borough were isolated.

CONTINUED AND TYPHUS FEVER.

No cases of continued and typhus fever were notified.

TYPHOID FEVER.

NOTIFICATIONS ; RATE PER 1,000 LIVING ; ERRORS IN DIAGNOSIS ;
BACTERIOLOGICAL EXAMINATIONS OF DOUBTFUL AND CONVALESCENT
CASES ; DEATHS.

NOTIFICATIONS.

The Typhoid Fever cases notified were :—

							Borough	
		Poplar.			Bromley.	Bow.	of Poplar.	
1915	..	10	..	7	..	1	..	18
1916	..	7	..	7	..	5	..	19
1917	..	19	..	16	..	4	..	39
1918	..	8	..	3	..	1	..	12*
1919	..	11	..	6	..	6	..	23

* The lowest number of cases recorded.

	1st quarter.	2nd quarter.	3rd quarter.	4th quarter.	Total.
Poplar ..	—	.. 2	.. 5	.. 4	.. 11
Bromley ..	1	.. 2	.. 1	.. 2	.. 6
Bow ..	2	.. 1	.. 1	.. 2	.. 6
	—	—	—	—	—
	3	5	7	8	23
	—	—	—	—	—

Notifications per 1,000 living :—

	Poplar.	Bromley.	Bow.	Borough of Poplar
1915 ..	0·18	.. 0·11	.. 0·02	.. 0·11
1916 ..	0·12	.. 0·11	.. 0·12	.. 0·12
1917 ..	0·38	.. 0·27	.. 0·11	.. 0·27
1918 ..	0·16	.. 0·05	.. 0·02	.. 0·08
1919 ..	0·20	.. 0·09	.. 0·15	.. 0·14

ISOLATION.

Ten cases in Poplar, three in Bromley and five in Bow were removed to various hospitals, as follows :—

	Poplar.	Bromley.	Bow.	Borough.
Metropolitan Asylums				
Board's Hospitals..	8	1	4	13
Sick Asylum	2	2	1	5
	—	—	—	—
	10	3	5	18
	—	—	—	—

ERRORS OF DIAGNOSIS.

One case sent to a Metropolitan Asylums Board Hospital from Poplar was certified as not suffering from typhoid fever.

DEATHS.

Six patients died from typhoid fever, out of 17 actual cases (2 Poplar and 4 Bow).

BACTERIOLOGICAL EXAMINATIONS OF DOUBTFUL CASES.

Eleven specimens of blood from doubtful cases of typhoid fever were forwarded to the Lister Institute of Preventive Medicine. In four instances (36·3 per cent.) the typhoid (Widal) reaction was obtained.

DIPHTHERIA, INCLUDING MEMBRANOUS CROUP.

NOTIFICATIONS ; DEATHS ; BACTERIOLOGICAL EXAMINATIONS ; ERRORS IN DIAGNOSIS ; ISOLATION ; THE DIPHTHERIA ANTI-TOXIN (LONDON) ORDER, 1910,

NOTIFICATIONS.

93 cases of diphtheria were notified in Poplar, 128 cases were notified in Bromley, and 99 cases were notified in Bow, making a total of 320 cases for the whole Borough.

Cases notified :—

		Poplar.		Bromley.		Bow.		Borough of Poplar.
1915	..	86	..	120	..	104	..	310
1916	..	104	..	124	..	111	..	339
1917	..	148	..	150	..	68	..	366
1918	..	124	..	137	..	44	..	305
1919	..	93	..	128	..	99	..	320

Notifications per 1,000 living :—

		Poplar.		Bromley.		Bow.		Borough of Poplar.
1915	..	1·58	..	1·91	..	2·63	..	1·98
1916	..	1·93	..	1·99	..	2·83	..	2·18
1917	..	2·97	..	2·61	..	1·87	..	2·55
1918	..	2·55	..	2·45	..	1·25	..	2·18
1919	..	1·74	..	2·08	..	2·55	..	2·08

DEATHS.

Number of deaths for the past five years was as follows :—

									Mortality per Borough 100 cases of Poplar. notified.
	Poplar.		Bromley.		Bow.		of Poplar.		
1915	.. 17	..	10	..	10	..	37	..	11·93
1916	.. 11	..	8	..	9	..	28	..	8·25
1917	.. 6	..	13	..	4	..	23	..	6·28
1918	.. 8	..	16	..	7	..	31	..	10·16
1919	.. 11	..	13	..	14	..	38	..	11·87

For death rates from diphtheria, also see Table XVIII., page 45.

BACTERIOLOGICAL EXAMINATIONS.

157 swabbings from throats of doubtful cases of diphtheria were forwarded for bacteriological examination to the Lister Institute of Preventive Medicine. The bacillus diphtheriæ was isolated in 61 instances (38·8 per cent.).

ERRORS IN DIAGNOSIS.

Eight cases of diphtheria admitted into Metropolitan Asylums Board's hospitals were certified as not having the complaint, 4 Poplar, 3 Bromley and 1 Bow.

No deductions have been made in respect of these patients.

ISOLATION.

80 cases in Poplar, 117 in Bromley, and 92 in Bow were removed to various hospitals for treatment as follows :—

POPLAR (SUB-DISTRICT).

Metropolitan Asylums Board's Hospitals	78
Sick Asylum	1
London Hospital	1
			<hr/>
			80
			<hr/>

BROMLEY.

Metropolitan Asylums Board's Hospitals	113
Sick Asylum	3
Poplar Hospital	1
			<hr/>
			117
			<hr/>

Bow.

Metropolitan Asylums Board's Hospitals	90
Hackney Infirmary	1
London Hospital	1
	—
	92
	—

THE DIPHTHERIA ANTI-TOXIN (LONDON) ORDER, 1910.

Sixty-six thousand units of diphtheria anti-toxin were supplied to medical practitioners during the year.

WHOOPING COUGH.

DEATHS.

		Poplar.		Bromley.		Bow.		Borough of Poplar.
1915	..	26	..	21	..	25	..	72
1916	..	6	..	21	..	16	..	43
1917	..	4	..	24	..	3	..	31
1918	..	35	..	14	..	12	..	61
1919	..	12	..	12	..	—	..	24

INFLUENZA.

DEATHS.

		Poplar.		Bromley		Bow.		Borough of Poplar.
1915	..	8	..	11	..	3	..	22
1916	..	1	..	7	..	2	..	10
1917	..	7	..	9	..	1	..	17
1918	..	175	..	218	..	131	..	524
1919	..	51	..	50	..	38	..	139

POPLAR (WHOLE BOROUGH).

Influenza Deaths during the Year 1919.

Age periods.	All Ages.	Under 1.	1 and under 2.	2 and under 5.	5 and under 15.	15 and under 25.	25 and under 45.	45 and under 65.	65 and upwards.
Males	67	4	3	1	2	8	22	23	4
Females	72	2	1	8	7	9	24	11	10
Totals	139	6	4	9	9	17	46	34	14

POPLAR (SUB-DISTRICT).

Age Periods.	All Ages.	Under 1.	1 and under 2.	2 and under 5.	5 and under 15.	15 and under 25.	25 and under 45.	45 and under 65.	65 and upwards.
Males	18	—	1	—	1	3	6	6	1
Females	33	—	—	2	5	4	9	8	5
Totals	51	—	1	2	6	7	15	14	6

BROMLEY (SUB-DISTRICT).

Age Periods.	All Ages.	Under 1.	1 and under 2.	2 and under 5.	5 and under 15.	15 and under 25.	25 and under 45.	45 and under 65.	65 and upwards.
Males	21	3	1	1	1	2	6	7	—
Females	29	1	—	5	2	3	11	2	5
Totals	50	4	1	6	3	5	17	9	5

BOW (SUB-DISTRICT).

Age Periods.				All Ages.	Under 1.	1 and under 2.	2 and under 5.	5 and under 15.	15 and under 25.	25 and under 45.	45 and under 65.	65 and upwards.
Males	28	1	1	—	—	3	10	10	3			
Females	10	1	1	1	—	2	4	1	—			
Totals	38	2	2	1	—	5	14	11	3			

MEASLES.

DEATHS.

The following figures are the deaths from Measles for the past five years :—

	Poplar.	Bromley.	Bow.	Borough of Poplar.
1915 ..	61	44	9	114
1916 ..	21	19	8	48
1917 ..	29	47	15	91
1918 ..	35	79	37	151
1919 ..	6	—	1	7

Four deaths (2 of which belonged to the Borough of Poplar) occurred in the Sick Asylum.

For death rates see Table XVIII., page 45.

Respecting outworkers see page 52.

SPOTTED FEVER. EPIDEMIC CEREBRO-SPINAL MENINGITIS.*

NUMBER OF CASES.

Sixteen cases occurred within the Borough—5 Poplar, 9 Bromley, and 2 Bow.

REMOVALS.

Poplar (Sub-District).

Metropolitan Asylums Board's Hospitals	2
Sick Asylum	2
Poplar Hospital	1
East London Hospital	1
				6

Bromley.

Sick Asylum	2
Poplar Hospital	1
London Hospital	1
						4

Bow.

Sick Asylum	1
St. Bartholomew's Hospital	1
						2

Ten patients died from Cerebro-Spinal Meningitis—4 Poplar, 4 Bromley and 2 Bow

* Posterior basal meningitis is included in the term "cerebro-spinal fever," which does not include meningitis due to tuberculosis, syphilis, middle ear disease, or injury

ACUTE POLIO-MYELITIS, OR ACUTE POLIO-ENCEPHALITIS, AND ACUTE ENCEPHALITIS LETHARGICA.

NUMBER OF CASES.

Six cases of Polio-myelitis were notified—2 Poplar, 3 Bromley, and 1 Bow.

Three cases of Encephalitis Lethargica occurred in Poplar.

REMOVALS.

	Poplar	Bromley	Bow	Total
Hospital for Sick Children, Gt. Ormond St.,	—	1	—	1
London Hospital	2	—	—	2

The two Poplar cases removed were Encephalitis Lethargica and the Bromley case was Polio-myelitis.

DEATHS.

No deaths of notified cases occurred. One death occurred from Encephalitis, but the case had not been notified as Encephalitis Lethargica.

One patient, notified as suffering from Encephalitis Lethargica, died, and the cause of death was given as Purulent Cerebro-Spinal Meningitis.

DIARRHŒA AND ENTERITIS.

DIARRHŒA AND ENTERITIS—DEATHS; NOTIFICATION OF ZYMOTIC ENTERITIS AND SUMMER DIARRHŒA.

Under this heading are included deaths registered as due to epidemic diarrhœa, epidemic enteritis, infective enteritis, zymotic enteritis, summer diarrhœa, choleraic diarrhœa, gastro-enteritis, gastro-intestinal catarrh, muco-enteritis, colitis, etc. Deaths from dysentery are not included. See Tables VIII.—XI., XIII.—XVI.

ALL AGES.

	Poplar.	Bromley.	Bow.	Borough of Poplar.	London.
1915 ..	73	49	52	174	2,542*
1916 ..	43	41	23	107	1,598*
1917 ..	39	32	28	99	1,506*
1918 ..	21	18	19	58	1,112*
1919 ..	33	22	27	82	1,372*

* Under two years for London only.

DIARRHŒA, UNDER ONE YEAR.*

		Poplar.		Bromley.		Bow.		Borough.
1915	..	43	..	27	..	18	..	88
1916	..	13	..	18	..	9	..	40
1917	..	13	..	16	..	7	..	36
1918	..	8	..	5	..	5	..	18
1919	..	8	..	3	..	8	..	19

ENTERITIS,† UNDER ONE YEAR.

		Poplar.		Bromley.		Bow.		Borough.
1915	..	8	..	11	..	15	..	34
1916	..	13	..	12	..	8	..	33
1917	..	7	..	5	..	9	..	21
1918	..	8	..	5	..	5	..	18
1919	..	17	..	13	..	9	..	39

DIARRHŒA AND ENTERITIS, UNDER ONE YEAR.

		Poplar.		Bromley.		Bow.		Borough.
1915	..	51	..	38	..	33	..	122
1916	..	26	..	30	..	17	..	73
1917	..	20	..	21	..	16	..	57
1918	..	16	..	10	..	10	..	36
1919	..	25	..	16	..	17	..	58

NOTIFICATION OF ZYMOTIC ENTERITIS (SUMMER DIARRHŒA).

Notifiable from 1st June to 30th September.

Age periods. Years.	Number of notifications.				Number of deaths.			
	Poplar.	Bromley.	Bow.	Total.	Poplar.	Bromley.	Bow.	Total.
Under 1 ..	64	85	15	164	25	16	17	58
1—5 ..	122	185	35	342	6	2	4	12
5—15 ..	24	34	2	60	—	—	—	—
15—25 ..	3	6	—	9	—	—	—	—
25—45 ..	6	31	—	37	—	1	1	2
45—65 ..	4	17	—	21	—	—	1	1
65 and upwards	16	7	—	23	2	3	4	9
All ages—totals	239	365	52	656	33	22	27	82

* Under the heading of "Diarrhœa" are included deaths registered as due to epidemic diarrhœa, epidemic enteritis, infective enteritis, zymotic enteritis, summer diarrhœa, choleraic diarrhœa and cholera (other than Asiatic or epidemic).

† Under the heading of "Enteritis" are included deaths registered as due to enteritis, muco-enteritis, gastro-enteritis, and gastro-intestinal catarrh.

INQUESTS AND DEATHS FROM VIOLENCE.

Inquests and Deaths from violence during the year 1919, were as follows :—

Sub-Districts.	Number of Inquests held in the Sub-Districts.	Deduct Inquests held on non-parishioners.	Add Inquests held on parishioners from outlying districts.	Total Inquests belonging to each Sub-District.	Verdict from Violence.	Verdict from Natural Causes.
POPLAR ..	91	23	43	111	42	69
BROMLEY	210	125	19	104	36	68
BOW ..	36	3	36	69	21	48
TOTALS	337	151	98	284	99	185

For annual rates of deaths from violence per 1,000 persons living and the percentages of inquest cases to total deaths, see Table XVIII page 45.

	Violent deaths which actually occurred in Poplar, Bromley and Bow, not deducting non-residents, were as follows :—			Deaths occurring entirely outside the Borough, but belonging thereto.		
	POPLAR.	BROMLEY.	BOW.	POPLAR.	BROMLEY.	BOW.
By Railway	2	3
By Vehicles and Horses	23	...	2	2	5
Ships, Boats and Docks (exclusive of drowning)	11	...	2
Building Operations	1
Conflagrations	1
Burns, Scalds and Explosions	18	1	3	...	1
Drowning (accidental not suicidal)	14	2	...	1	3	1
Suffocation in Bed	1	1
Poisons or Poisonous Vapours
Other and not stated Causes	7	41	...	1	2	1
Homicide
Suicide	5	7	4	...	1	...
Murder	1	1
Anthrax	1	...
Ptomaine Poisoning	1
TOTAL	29	108	8	9	9	8

MORTUARY.

NUMBER OF BODIES RECEIVED INTO COUNCIL'S MORTUARY, COTTAGE STREET.

The following is the number of bodies received into the Council's Mortuary, Cottage Street, Poplar, classified according to the ages of the deceased :—

No age stated	1
Stillborn	4
Under 1	31
1 to 5	17
5 to 15	16
15 to 25	14
25 to 65	134
65 and upward	74
Total							291

CANAL BOATS.

For the year ended 31st December, 1919, the inspections and reports of the Inspectors respecting registered canal boats and non-registered canal boats were as follows :—

	Registered.	Non-Registered.
†Mr. H. A. Tibbatts, East Combined Division	—	—
*Mr. J. Johnson, West Combined Division ..	1	—
†Mr. C. H. Brown, Poplar South Division ..	—	—
Mr. H. J. Langley, Bromley North Division	—	—
Mr. Wm. Johnson, Bromley Central Division	4	—
Mr. A. J. Field, Bow East Division	5	15
Mr. W. Boyce, Bow West Division	—	42
	—	—
	10	57
	—	—

* Mr. J. Johnson reported that in one case the after cabin was used as living and sleeping room, causing overcrowding. Owners were communicated with and steps were taken by them to stop overcrowding.

† No canal in Sub-division ; deputises when necessary for other Inspectors.

WORKSHOPS, WORKPLACES, LAUNDRIES AND OUTWORKERS.

TABLE A.

Table giving number of, and inspections, etc., of Bakehouses, Laundries, Workshops, Workplaces, Places where food is prepared, Milk premises, Cowsheds, Slaughter-houses, Offensive Businesses, Ice Cream premises, Registered Houses Let in Lodgings, and Homeworkers' premises.

Premises.	On Register during year 1919.			Number of Inspections.	Number of Intimations.	Number of Notices.	Number of Final Notices.	Number of Prosecutions.
	Male.	Female.	Total.					
Bakehouses (Factories)	12	..	12	75	6	1
Bakehouses (Workshops)	61	..	61	232	25	1	1	..
Bakehouses (Domestic Workshops)	19	..	19	82	18
Factories (Laundries and Miscellaneous Factories)	†	†	†	60	4	2
Laundries (Workshops)	1	6	7	28	1
Laundries (Domestic Workshops)	4	4	9	5
Workshops	152	124	276	513	59	32	2	..
Workshops (Domestic)	7	14	21	30
Workplaces	181	..	181	175	7	4
Workplaces (Domestic)	17	..	17	13	1	1	1	..
Places where food is sold or prepared ..	314§	..	314§	773¶	76	11	1	..
Milk Premises	188**	..	188**	556	3	2
Cowsheds	10	..	10	32
Slaughterhouses ..	10	..	10	51
Other offensive trade premises	5§§	..	5§§	56
Ice Cream premises ..	71	..	71	73	5	1	1	..
Registered houses-let- in-lodgings	1,443	3911††	392‡‡	214	26	..
Homeworkers' premises	45	783	828	1607

† No Register is kept of Factories. Figures are from Journals and Card Index.

|| Including 9 workshops where both men and women are employed.

§ Power is used in 27 of these premises where sausages are made.

¶ Including inspections of all factories where food is prepared.

** Including 10 cowsheds.

§§ 5 registered premises, by the London County Council.

†† See page 88.

‡‡ 20 intimations were in respect of verminous rooms.

||| Including 92 for cleansing and 2 for overcrowding.

TABLE B.

WORKSHOPS ON REGISTER (MALE), 1919.

24 Bootmakers	1 Mineral water
2 Barge builders	1 Oar maker
3 Boat builders	1 Oil refiner
1 Basket maker	1 Organ builder
1 Bellows maker	1 Packing manufacturer
1 Bottle maker	2 Printers
2 Brush makers	2 Paint can cleaners
2 Builders	1 Painter's fitter
1 Cardboard box maker	2 Picture frame makers
2 Cycle makers	1 Pickle works
2 Cork cutters	3 Plumbers
1 Comb maker	2 Rope and twine makers
1 Chemical works	2 Rag sorters
3 Confectioners	1 Rubber wash-house works
1 Coach builder	1 Rat poisons
1 Composition works	1 Sheet metal maker
1 Cooperage	1 Solder works
6 Cabinet makers	4 Sack and Tarpaulin makers
1 Cigar maker	1 Skin dresser
1 Clay pipe maker	1 Stonemason
1 Draught board maker	6 Tailors
1 Engineer	2 Tile and earthenware
1 Electrical engineer	2 Tinsmiths
15 Farriers	2 Upholsterers
1 Frilling maker	3 Undertakers
2 Garage sheds	1 Varnish works
1 Glass bender	1 Ventilator maker
5 Harness makers	1 Vinegar works
1 Keg and drum maker	3 Wheelwrights
1 Laundry	1 Wood chopper
2 Motor garage works	2 Wire workers
4 Metal marine stores	1 Walking stick maker
1 Mattress maker	2 Zinc workers
2 Metal works	

As per List Table A Workshops on Register, page 75.

TABLE B—*continued.*

WORKSHOPS ON REGISTER (MEN AND WOMEN EMPLOYED).

2 Cork cutters	1 Clay pipe maker
1 Tailor	1 Brush maker
1 Confectioner	1 Skin Dresser
2 Upholsterers	

DOMESTIC WORKSHOPS ON REGISTER (WHERE MEN ARE EMPLOYED).

5 Bootmakers	1 Confectioner
1 Tailor	

HOME WORKERS ON REGISTER (MALE)

40 Bootmakers	1 Furrier
4 Tailors	

WORKSHOPS AND DOMESTIC WORKSHOPS ON REGISTER (FEMALES).*

44 Tailors	1 Dressing gown maker
10 Laundresses	2 Packers
5 Boot upper makers	1 Pickle maker
12 Dressmakers	3 Glass blowers
1 Upholsterer	4 Mantle makers
2 Cork cutters	3 Paper and rag sorters
5 Skirt and blouse makers	3 Woodchoppers
3 Waterproof garment makers	2 Shirt front and collar makers
3 Sack and bag makers	1 Rubber balloon maker
2 Shirt and pyjama makers	1 Trimming maker
2 Furriers	1 Corset maker
3 Underclothing makers	1 Artificial flower maker
1 Seal stamper	1 Horse hair sorter
17 Milliners	3 Toymakers
3 Tiemakers	2 Rope sling makers
5 Confectioners	1 Caneworker.

* It is very difficult to separate Workshops and Domestic Workshops, as these premises are sometimes one and sometimes the other, according to the pressure of work. See Table A, page 75.

TABLE C.**See footnote, page 77.***FACTORIES, WORKSHOPS, LAUNDRIES, WORKPLACES AND HOMEWORKERS.
1.—INSPECTION.**

Premises.	Number of				
	Inspections.	Written Notices.			Prosecutions.
		Intima- tion.	Statu- tory.	Final.	
Factories (Including Factory Laundries.)	135	10	3
Workshops† (Including Workshop Laundries.)	773	85	33	3	...
Domestic Workshops‡	121	23
Workplaces (Males)	175	7	4
Domestic Workplaces (Males)	13	1	1	1	...
Places where food is sold or prepared	773	76	11	1	...
Homeworkers' Premises	1,607
Total	3,537	202	52	5	...

* TABLES C, D, E and F are filled in at the request of the Secretary of State.

† Including Workshop Bakehouses. See Table A, page 75.

‡ Including Domestic Bakehouses and Laundries. See Table A, page 75.

|| The inspections of all factories where food is prepared are included. Power is used to chop meat for sausages, etc., in 27 of the premises.

2.—DEFECTS FOUND.*

Particulars. (1)	Number of Defects.			Number of Prosecu- tions. (5)
	Found. (2)	Remedied. (3)	Referred to H.M. Inspector. (4)	
<i>Nuisances under the Public Health Act :</i>				
Want of cleanliness	408	408		
Want of ventilation	8	8		
Overcrowding	4	4		
Want of drainage of floors		
Other nuisances	139	139		
Sanitary accommodation. {	insufficient	
	unsuitable or defec- tive	2	2	
	not separate for sexes	
<i>Offences under the Factory and Workshop Act :—</i>				
Illegal occupation of underground bakehouse (s. 101)				
Breach of special sanitary requirements for bakehouses (ss. 97 to 100)				
Other offences (Excluding offences relating to out- work which are included in Table D of this Report.)				
Total	561	561		

* These defects refer to premises as mentioned above under table of Inspection.

TABLE D—HOME WORK.

Nature of Work.	Outworkers' List, Section 107.									Outwork in un-wholesome premises, Section 108.*			Outwork in infected premises,* Sections 109, 110.		
	Lists received from Employers.						Notices served on Occupiers as to keeping or sending lists.	Prosecutions.		Instances.	Notices served.	Prosecutions.	Instances.*	Orders made (S. 110).	Prosecutions (Sections 109, 110).
	Twice in the year.			Once in the year.				Failing to keep or permit inspection of lists.	Failing to send lists.						
	Lists.	Outworkers.		Lists.	Outworkers.										
		Con-tractors.	Work-men.		Con-tractors.	Work-men.									
(1)	(2)	(3)	(4)	(5)	(6)	(7)	(8)	(9)	(10)	(11)	(12)	(13)	(14)	(15)	(16)
Wearing Apparel—															
„ Making, &c. ...	90	137	1072	6	...	23									
„ Cleaning & Washing															
Household Linen ...															
Lace, lace curtains & nets															
Curtains and furniture hangings ...															
Furniture and Upholstery															
Electro-plate ...															
File Making ...															
Brass and Brass articles															
Fur pulling ...															
Cables and Chains ...															
Anchors and Grapnels ...															
Cart Gear ...															
Locks, Latches and Keys															
Umbrellas, &c. ...															
Artificial Flowers ...															
Nets, other than wire nets															
Tents ...															
Sacks ...															
Racquet and Tennis Balls															
Paper, &c., Boxes, Paper															
Bags ...	6	...	411									
Brush Making ...															
Pea Picking ...															
Feather Sorting ...															
Carding, &c., of buttons, &c															
Stuffed Toys ...															
Basket Making ...															
Chocolates & Sweetmeats															
Cosaques, Christmas															
Crackers, Christmas															
Stockings, &c. ...															
Textile Weaving ...															
Total ...	96	137	1,483	6	...	23									

* For Infectious Diseases see page 52.

*LIST OF OUTWORKERS, FACTORY AND WORKSHOP ACT,
1901 (S. 107).**

Class of Homework.	1919. Number of Lists received.				Number of Addresses of Outworkers.			
	Due Feb. 1st.		Due Aug. 1st.		Forwarded to other Authorities.		Received from other Authorities.	
	No. of Lists.	No. of Out-workers.	No. of Lists.	No. of Out-workers.	Due Feb. 1.	Due Aug. 1.	Due Feb. 1.	Due Aug. 1.
Total ...	49	788	53	855	422	385	502	536
Tailoring ...	36	429	39	523				
Shirtmaking ...	3	69	3	65				
Miscellaneous ...	4	56	5	44				
Shoemakers ...	3	23†	3	25†				
Boxes ...	3	211	3	198				

* See page 79. † 16 Males and 7 Females. ‡ 17 Males and 8 Females.

TABLE E.

REGISTERED WORKSHOPS AND WORKPLACES.

Workshops and Workplaces, etc., on the Register (s. 131) at the end of the year. (1)						Number. (2)
Important classes of workshops, such as workshop bakehouses may be enumerated here.	Bakehouse Workshops	61
	Bakehouse Domestic Workshops	19
	Laundries Workshops	7
	Laundries Domestic Workshops	4
	Workshops	276*
	Domestic Workshops	21
	Workplaces	181
	Workplaces Domestic	17
Places where food is sold or prepared ...						314†
Total number of workshops and workplaces, etc., on Register						900‡

* 9 where men and women are employed.

† Power is used in 27 of these premises.

‡ See Tables A and B, and pages 75 and 76.

TABLE F.**OTHER MATTERS.**

Class. (1)	Number. (2)
Matters notified to H.M. Inspector of Factories :--	
Failure to affix Abstract of the Factory and Workshop Act (s. 133)	5
Action taken in matters referred } Notified by H.M. Inspector ...	24
by H.M. Inspector as remedi- able under the Public Health Acts, but not under the Fac- tory and Workshop Act (s. 5) } Reports (of action taken) sent to H.M. Inspector ...	24
Other (Communications)... ..	3
Underground Bakehouses (s. 101):—	
Certificates granted during the year
In use at the end of the year	27

BAKEHOUSES.**INSPECTIONS.**

The Bakehouses throughout the Borough were inspected at least twice during the year.

There are 92 Bakehouses in the Borough of Poplar, 28 Poplar (including 3 factory bakehouses), 41 Bromley (including 6 factory bakehouses), 23 Bow (including 3 factory bakehouses). See Table A, page 75, number made up to end of year.

There are 27 underground bakehouses in the Borough, 3 Poplar, 14 Bromley, and 10 Bow.

Cleansing was necessary in the various bakehouses on 134 occasions. Five other nuisances were found.

COFFEE SHOPS, EATING HOUSES, FRIED-FISH SHOPS,* HOTELS AND RESTAURANTS, ETC.†

LONDON COUNTY COUNCIL (GENERAL POWERS) ACT, 1908.—SANITARY REGULATIONS FOR PREMISES USED FOR SALE, ETC., OF FOOD FOR HUMAN CONSUMPTION.

The number of premises in the Borough where food is sold or prepared for sale is 314 : 179 Poplar, 75 Bromley, and 60 Bow. (See Table A, page 75.)

LONDON COUNTY COUNCIL (GENERAL POWERS) ACT, 1908.

773 visits were paid to these premises during the year and the Sanitary Regulations under the London County Council (General Powers) Act, 1908, Section 8, were enforced.

Want of cleanliness was found in 143 instances, and 55 other defects existed.

76 intimations were served, which in 11 cases were followed up by Statutory notices and one final notice was served.

A register of these premises is kept.

HAIRDRESSERS' PREMISES.

The hairdressers' premises were inspected during the year.

MILKSHOPS.

DAIRIES, COWSHEDS AND MILKSHOPS ORDER.

LONDON COUNTY COUNCIL (GENERAL POWERS) ACT, 1908.—POWER TO SANITARY AUTHORITIES TO REMOVE FROM OR REFUSE TO ENTER ON REGISTER NAMES OF DAIRYMEN IN CERTAIN CIRCUMSTANCES.

DAIRIES, COWSHEDS AND MILKSHOPS ORDER.

At the end of the year there were in the Borough 188 registered premises (including 10 cow-houses, 1 Poplar, 4 Bromley and 5 Bow) where milk is sold, 54 Poplar, 78 Bromley and 56 Bow. These milk shops were kept under observation.

* Bye Laws.

† See Tables A and C, pages 75 and 78.

Cleansing of premises was necessary in fourteen instances. Eight other defects were found.

3 milkshops had been placed on the register during the year, 0 Poplar, 0 Bromley, and 3 Bow. 10 premises were on account of change of occupiers re-registered as milkshops, 2 Poplar, 3 Bromley and 5 Bow.

The sale of milk was discontinued on 52 premises—24 Poplar, 22 Bromley and 6 Bow.

For milkshops connected with infectious diseases, see page 58.

LONDON COUNTY COUNCIL (GENERAL POWERS) ACT, 1908. PART II.

SANITARY PROVISIONS.

POWER TO SANITARY AUTHORITIES TO REMOVE FROM OR REFUSE TO ENTER ON REGISTER NAMES OF DAIRYMEN IN CERTAIN CIRCUMSTANCES.

No circumstances arose during the year calling for the enforcement of the power given to the Sanitary Authority under the London County Council (General Powers) Act, 1908, Section (5).

SMOKE NUISANCES.

10 smoke nuisances were dealt with during the year :—0 Bow East, 0 Bow West, 0 Bromley North, 4 Bromley Central, 0 East Combined, 5 West Combined, and 1 Poplar South.

ICE CREAM.

LONDON COUNTY COUNCIL (GENERAL POWERS) ACT, 1902, SEC. 43.

Twice annually and as often as may be necessary all the known premises within the Borough where ice-creams are manufactured are inspected. There are 71 such premises within the Borough, 30 Poplar 32 Bromley, and 9 Bow. (See Table A, page 75.)

Cleansing of premises was necessary in 13 instances. No other nuisances existed.

FOOD AND DRUGS ACTS.

RESULTS OF ANALYSES. LEGAL PROCEEDINGS. PRESERVATIVES IN BUTTER, PRESERVATIVES IN MARGARINE.

The results of the analyses of 731 samples were reported to the Committee during the year 1919, the samples being as follows :—

SAMPLE.	1st Quarter.	2nd Quarter.	3rd Quarter	4th Quarter	Total.
Milk	83	106	104	93	386†
Butter	5	1	6	2	14
Margarine	13	12	3	7	35
Lard	5	7	4	5	21
Dripping	24	8	4	5	41
Shredded Suet	—	—	3	5	8
Chocolate	—	—	—	—	—
Cheese	—	—	—	—	—
Coffee	3	1	2	3	9
Cocoa	5	2	2	2	11
Pepper	—	1	2	—	3
Arrowroot	—	—	—	2	2
Glycerine	6	1	—	1	8
Saffron	1	—	—	—	1
Ammoniated Tincture of Quinine	—	1	—	4	5
Crushed Linseed	2	3	—	2	7
Camphorated Oil	—	—	—	1	1
Lime Water	—	—	1	1	2
Cream of Tartar	—	—	—	1	1
Ground Rice	4	3	1	2	10
Tartaric Acid	—	—	—	1	1
Gregory Powder	—	—	—	1	1
Vinegar	7	9	27	30	73
Honey	5	—	—	2	7
Mustard	1	2	4	4	11
Milk of Sulphur	2	—	—	—	2
Golden Syrup	—	—	2	1	3
Self-Raising Flour †	—	5	1	—	6
Sausage	7	—	—	—	7
Gin	3	3	—	—	6
Whisky	8	—	—	1	9
Rum	3	—	—	—	3
Malt Liquors	22	11	—	—	33
Castor Oil	4	—	—	—	4
Totals	213	176	166	176	731

‡ Of the 386 samples of milk, 65 samples were procured on Sundays from itinerant vendors and 182 from itinerant vendors on weekdays. Three Sunday samples were not in accordance with the standard and legal proceedings were instituted. Three week-day samples were not genuine, legal proceedings were instituted in one case, one vendor was cautioned. Samples were taken on delivery, viz., 9 Poplar Union Workhouse, 6 Sick Asylum, 21 at Railway Stations, and 1 at a L.C.C. School. All the samples were genuine except 1 taken at the Workhouse and 3 taken at Railway Stations. The farmers in the latter cases were cautioned. The Guardians were communicated with in regard to the sample procured at the Workhouse.

RESULTS OF ANALYSES.

Legal proceedings were instituted in 11 cases and letters of caution were sent in seven instances. (See below).

Milk	7
Vinegar	4

ADMINISTRATIVE ACTION REGARDING ARTICLES REPORTED TO BE NOT GENUINE. QUARTER ENDED MARCH, 1919.

Sample.	No.	Result of Analysis.	Result of Proceedings.
Vinegar	385	Adulterated with 31 per cent. water.	£1 costs.
Milk	5	Deficiency in solids not fat to extent of 9·4 per cent.	£2 2s. costs.
Milk	421	Deficient in fat to extent of 28 per cent.	Letter of caution sent to vendor.
Milk	219	Deficient in fat 36·6 per cent.	Dismissed on warranty.

QUARTER ENDED JUNE, 1919.

Sample.	No.	Result of Analysis.	Result of Proceedings.
Milk	43F	Milk deficient in fat 16·6 per cent.	Dismissed on warranty, defendant cautioned.
Vinegar	429	Vinegar adulterated with 34 per cent. water.	Defendant to pay £5 5s. costs.
Milk	58	Deficient in solids not fat 5·1 per cent.	Letter of caution sent to vendor.

QUARTER ENDED SEPTEMBER, 1919.

Sample.	No.	Result of Analysis.	Result of Proceedings.
Milk	450	Deficient in fat and solids-not-fat 12.3 and 4.58 per cent. respectively.	£5 penalty ; £2 2s. costs
Milk	56	Deficient in fats and solids-not-fat 12.3 and 4.5 per cent. respectively.	£3 penalty ; £2 2s. costs
Vinegar	57	Adulterated with at least 21 per cent. added water.	Dismissed on payment of £2 2s. costs.
Milk	470	Deficient in solids-not-fat 7.5 per cent.	Letter of caution to vendor.
Milk	469	Deficient in solids-not-fat 12.2 per cent.	Letter of caution to vendor.
Milk	471	Deficient in solids-not-fat 5.2 per cent.	Letter of caution to vendor.

QUARTER ENDED DECEMBER, 1919.

Sample.	No.	Result of Analysis.	Result of Proceedings.
Vinegar	75	Adulterated with 25 per cent. water.	£3 penalty, including costs
Milk	79	Deficient in fat and solids-not-fat 9.3 and 12.9 per cent. respectively.	10s. penalty ; £1 1s. costs.
Milk	115	Deficient in solids-not-fat 5.8 per cent.	Warranty proved ; summons dismissed ; no costs allowed.
Milk	494	Mild deficient in solids-not-fat 3.1 per cent.	Vendor cautioned.
Vinegar	312	Adulterated with at least 10 per cent. of water.	Reported to Public Health and Housing Committee ; no action to be taken.

Legal proceedings were also taken in a number of cases where infringements of various Food Control Orders and Regulations had occurred. Particulars were forwarded to the Ministry of Food and the Local Food Control Committee as well as to the Ministry of Health.

PRESERVATIVES IN BUTTER.

Of the 14 samples of butter, 8 contained percentages of boric acid as follows :—

6 samples contained 0·1 per cent.

1 " 0·2 "

1 " 0·3 "

PRESERVATIVES IN MARGARINE.

Of the 35 samples of margarine, 25 contained percentages of boric acid as follows :—

19 samples contained 0·1 per cent.

1 " 0·15 "

4 " 0·2 "

1 " 0·3 "

MARGARINE ACT, 1887, SALE OF FOOD AND DRUGS ACT, 1899,
AND THE BUTTER AND MARGARINE ACT, 1907.

No application was received to register premises for the carrying on of businesses of wholesale dealers in margarine and milk blended butter.

The following is the number of premises in each Sub-District of the Borough registered and in use under the above-mentioned Acts, up to and including 31st December, 1919, viz. :—

Sub-District.	Margarine.		Butter.	
	Wholesale Dealer.	Manufacturer.	Factory.	Wholesale Dealer in Milk-blended.
Poplar	3
Bromley	3	...	1	...
Bow	4
Totals	10	...	1	...

HOUSES LET IN LODGINGS OR OCCUPIED BY MEMBERS OF MORE THAN ONE FAMILY.

WORK OF THE INSPECTOR AND INSPECTION OF CHINESE QUARTER.

At the end of the year there were 1,448 houses on the register.

See Table A, page 75.

There are 95 premises occupied by Chinese on the Register and these premises are under constant supervision.

HOUSING ACTS, 1890-1919.

HOUSING (INSPECTION OF DISTRICT) REGULATIONS, 1910. REPRESENTATIONS AND CLOSING ORDERS UNDER SECTION 17; DETERMINATION OF CLOSING ORDERS, SECTION 17 (6). REPRESENTATIONS TO LONDON COUNTY COUNCIL UNDER HOUSING WORKING CLASSES ACT, 1890. PART I.

HOUSING (INSPECTION OF DISTRICT) REGULATIONS, 1910.

REPRESENTATIONS AND CLOSING ORDERS UNDER SECTION 17 (2).

Four premises were inspected under Section 17 (1) of the Housing and Town Planning, etc., Act, 1909, "Representations" were made followed by "Closing Orders":—

PREMISES INSPECTED.

Chadbourne Street, Nos. 17 and 18 .. Closing Orders made 16th
January, 1919.

West Ferry Road, Nos. 321 and 327 .. Closing Orders made 16/1/19
(since demolished).

DETERMINATION OF CLOSING ORDERS.

Closing Orders made by the Council in respect of Nos. 17 and 18, Chadbourne Street on the 16th January, were determined, as the premises were made fit for human habitation.

REPRESENTATIONS TO LONDON COUNTY COUNCIL UNDER HOUSING OF THE
WORKING CLASSES ACT, 1890—PART I.

The following areas were represented to the London County Council under Part I. of the above Act. Up to the end of the year 1919 no action had been taken.

	<i>Area.</i>	<i>No. of houses.</i>	<i>Population.</i>
No. 1.	Bow Road and High Street, Bow	109 (and 10 sites)	638
No. 2.	St. Leonard's Road, Dunbar and Bromley Cottages	29	183
No. 3.	Orchard House	69 (and 3 other pr.)	425
No. 4.	High Street, Poplar, Collin's Place, Commodore Court, and Surrey Place West	46 (and 3 other pr.)	212
No. 5.	High Street, Poplar, Sophia Street, and Elizabeth Cottages	8 (and 3 vacant sites)	57
No. 6.	Lower North Street	47 (and 1 other pr. and 5 sites)	257
No. 7.	Silver Lion Court.. ..	12 (3 unoccupied)..	45
No. 8.	Birchfield Street	27 (and 1 shed) ..	98
No. 9.	Emmett Street, Bridge Road, and Providence Cottages	12 (and 4 other pr.)..	61
No. 10.	West Ferry Road	111 (and 2 sites) ..	844
			(Excluding 3 p.h.)

LONDON COUNTY COUNCIL (GENERAL POWERS) ACT, 1904.

VERMINOUS ROOMS.† LICENSED PREMISES' URINALS.

VERMINOUS ROOMS.

Verminous rooms are still brought to the notice of owners upon the "Intimations" which are followed, if necessary, by "Statutory Notices," more especially as there are generally other defects upon the premises, and certainly verminous premises are "in such a state as to be a nuisance to health," and owners, if they do not already know, are informed when defects are being dealt with under the Public Health (London) Act, 1891, that the vermin must be got rid of, otherwise the London County Council (General Powers) Act, 1904, will be brought into operation.

When a notice is served for cleansing under the byelaws for houses let in lodgings or occupied by members of more than one family, should the premises be verminous a special intimation to that effect is enclosed.

During the year 154 Intimation Notices were served in respect of verminous rooms, and the verminous rooms cleansed were :—

East Combined Division	28
West Combined Division	19
Poplar South Division	9
Bromley North Division	12
Bromley Central Division	11
Bow East Division	29
Bow West Division	26
Houses Let in Lodgings	20

Two summonses were applied for. (See Police Court Proceedings, pages 95 and 96).

† For the Cleansing of Verminous Persons, see pages 58-60.

SCHOOLS.

INSPECTION OF SCHOOLS.

The Schools of the Borough were inspected and the sanitary conveniences and water supplies were found in a satisfactory condition.

RAG FLOCK ACT, 1911.

Samples were procured from six premises where rag flock is stored, and in three cases legal proceedings were instituted. See page 97.

SANITARY INSPECTORS' WORK, etc.

TABULATED LISTS OF SANITARY INSPECTIONS, ETC. LEGAL PROCEEDINGS,
OVERCROWDING. GENERAL.

TABULATED STATEMENT OF INSPECTIONS, OF INSANITARY CONDITION FOUND EXISTING, AND OF RE-INSPECTIONS DURING THE PERIOD
FROM 1ST JANUARY, 1919, TO 31ST DECEMBER, 1919.

	<i>East combined.</i>	<i>West combined.</i>	<i>Poplar South.</i>	<i>Bromley North.</i>	<i>Bromley Central.</i>	<i>Bow East.</i>	<i>Bow West.</i>	Totals.
Inspections:—	964	1,218	1,307	1,098	843	1,030	1,133	7,593
On Complaints of Nuisances, etc.	606	870	985	734	579	605	861	5,240
On notification of infectious diseases	222	317	322	358	211	207	272	1,909
House to house visitation	136	265	—	6	53	218	—	678
Houses found in good condition	415	606	873	651	256	472	639	3,912
Do. requiring amendment	549	453	434	447	587	438	494	3,402
DETAILS OF INSANITARY CONDITIONS.								
Walls and ceilings requiring cleansing throughout	14	21	19	23	16	23	24	140
Do. do. partially	225	233	177	165	243	129	264	1,436
Yards and areas insufficiently paved	53	39	28	26	44	5	33	228
Do. imperfectly drained	42	46	1	5	—	18	5	117
Inlets to drains not properly trapped	1	15	5	—	—	1	—	22
Drains proved defective by smoke drain test	3	26	17	26	11	17	12	112
Smoke drain test applied with negative results	132	5	127	23	141	36	—	464
Drains obstructed	57	90	131	131	19	52	42	522
Sink waste pipes directly connected with drains	—	—	—	1	—	1	—	2
Rain water pipes do. do.	—	27	—	—	2	1	—	30
Soil pans of w.c.s without suitable water supply	63	27	62	87	26	6	32	303
Do. broken or unsuitable	21	11	9	12	7	17	6	83
Do. in foul condition	30	32	12	13	13	27	9	136
Do. untrapped	—	1	—	—	4	—	—	5

	East com- bined	West combined	Poplar South.	Bromley North.	Bromley Central.	Bow East.	Bow West.	Totals.
Roof guttering and rainwater pipes defective	120	135	189	93	97	71	74	779
Roofs not watertight	151	101	251	104	175	108	144	1,034
Water supplies to premises cut-off (notified by Metropolitan Water Board) ..	4	16	6	6	2	6	8	48
Water service fittings defective, causing waste of water	32	19	31	29	17	16	16	160
Drinking Water improperly stored	—	—	—	—	1	—	—	1
W.C.s badly ventilated	—	1	1	1	13	—	—	16
Do. badly situated	—	1	—	—	—	—	—	1
Dampness	115	72	101	26	78	102	88	582
Inundations	7	7	—	—	—	2	—	16
Overcrowding	—	14	1	1	6	2	—	24
Accumulations of dung or refuse	20	54	6	19	1	10	15	125
Foul p.h. urinals	11	11	3	12	3	—	1	41
Other nuisances, dilapidations, want of ventilations, etc.	338	244	355	174	258	241	238	1,898
Breaches of London County Council By-laws	50	3	—	—	28	63	4	148
Breaches of Council's By-laws	23	—	—	—	—	21	45	89
Intimations served	568	394	439	447	490	358	494	3,190
Notices served	259	248	115	277	405	128	330	1,762
Final notices served	67	39	18	35	74	22	15	270
Summonses applied for	2	—	—	—	—	2	1	5
Passengers from Continental Ports—								
Visited	9	24	5	7	5	8	3	61
Undiscovered	4	2	—	—	—	1	2	9
Re-Inspections	4,574	2,149	2,596	1,615	3,159	1,739	1,074	16,836
Intimations served in respect of verminous rooms, whether in conjunction with, or separate from, other defects	28	19	9	12	11	29	26	134

Tabulated statement of Inspections of Insanitary Conditions found existing, and of Re-inspections, &c., during the twelve months ended 31st December, 1919 (Miss Alice Tattersall—Lady Inspector).

	Poplar.	Bromley.	Bow.	Total.
Workshops, Workplaces, Laundries, &c., Number of, on the Register	27	51	70	148
Workshops, Number of Workrooms therein	46	80	98	224
„ Number of Inspections of	39	72	112	223
„ Number of Re-inspections of	19	56	72	147
„ Found to be overcrowded	—	4	—	4
„ &c., newly discovered and registered	—	4	—	4
„ Workrooms therein measured	1	10	1	12
„ Reported to H.M. Inspector on discovery	1	4	—	5
Houses visited for enquiry at which no female hands were employed	223	525	801	1,549
Written intimations issued	5	21	18	44
Statutory Notices	2	11	6	19
Final Notices	—	—	1	1
Works carried out under supervision:—				
(a) Rooms cleansed and whitewashed	7	20	17	44
(b) Yards, roofs, &c., repaired	2	2	—	4
Additional means of ventilation provided	2	4	2	8
Sanitary Conveniences Constructed	—	1	—	1
Overcrowding of Workrooms, cases of, abated	—	4	—	4
Visits re Scabies	112	124	107	343
„ Phthisis	3	3	—	6
„ Outworkers' Lists	25	22	35	82
„ Inspection of Schools	10	10	8	28
„ Verminous School Children	6	42	88	136
Miscellaneous Inspections	13	16	10	39

POLICE COURT PROCEEDINGS:

No. of Street or Name of Premises or Locality, &c.	Nature of Complaint.	Date of Attendance at Police Court.	Result.	Name of Officer.
		1919.		
2, Findhorn Street ..	Owner failed to comply with notice to cleanse rooms, etc.	13th May	£2 4s. costs ; 10s. penalty ..	Johnson, Wm.
Ditto ..	Floor defective	13th May	£2 6s. costs ; 7 days' abatement order	Ditto.
29, Ailsa Street	Roof and rain water pipe defective	1st July.. ..	£2 8s. costs ; 7 days' abatement order	Ditto.
36, Barchester Street ..	Roof and ceiling defective ; walls and ceilings dirty, back room ceiling damp	18th July.. ..	£2 2s. costs ; £2 penalty ; 28 days' abatement order	Johnson, J.
14, East Ferry Road ..	Roofs, rain water pipes, and eaves gutters defective ; walls and ceilings, top floor rooms, landing, staircase and ground floor back room and wash-house damp and defective	26th August ..	£1 5s. costs ; 14 days' abatement order	Foad, C.
22, East Ferry Road ..	Roofs and ceilings throughout defective	26th August ..	£1 5s. costs ; 14 days' abatement order	Ditto.
36, Barchester Street ..	Owner failed to comply with abatement order ..	4th September ..	£2 2s. costs ; £5 penalty ..	Johnson, J.
21, Hale Street	Rain water pipe defective, causing dampness ; walls and ceilings defective ; house dirty and dilapidated	5th September ..	£3 3s. costs ; summons withdrawn	Ditto
54, Barchester Street ..	Roof and eaves gutters defective	1st October ..	£4 penalty ; £2 2s. costs ..	Johnson, J.
34, Barchester Street ..	Kitchen walls and wash-house dilapidated ; sill of back window dilapidated, walls damp ; stove and jambs of fireplaces and mantelshelf defective ; yard wall bulged and dangerous	1st October ..	£7 penalty ; £2 2s. costs ..	Ditto.

POLICE COURT PROCEEDINGS—continued.

No. of Street or Name of Premises or Locality, &c.	Nature of Complaint.	Date of Attendance at Police Court.	Result.	Name of Officer.
14, East Ferry Road ..	Owner failed to comply with Magistrate's Order ..	2nd October ..	£8 penalty	Foad, C.
22, East Ferry Road ..	Ditto ..	2nd October ..	£8 penalty	Ditto.
93, Venue Street ..	Walls and ceilings of wash-house, kitchen, off room and pantry dirty and dilapidated; roofs, ceilings, and flooring defective; no proper door to w.c.	23rd October ..	£5 penalty; £2 2s. costs ..	Johnson, W.
3, Charles Street ..	Top floor front and back rooms, slip room, landing, lower end of passage, kitchen, and wash-house filthy and dilapidated	4th November ..	£3 penalty; £2 2s. costs ..	Johnson, J.
1, Saxon Road ..	Drains defective	1st December ..	Dismissed; £7 7s. costs against Council	Boyce, W.
14, East Ferry Road ..	Owner failed to comply with Magistrate's abatement order	2nd December ..	1s. penalty; £7 7s. costs ..	Foad, C.
22, East Ferry Road ..	Ditto ..	2nd December ..	1s. penalty; £5 5s. costs ..	Ditto.
12, Broomfield Street ..	Owner failed to comply with notice <i>re</i> cleansing ..	30th December ..	Owner to do the work; £2 4s. costs	Brown, C. H.
Ditto ..	Yard required paving	30th December ..	Ditto	Ditto.
Ditto ..	Ground floor front room flooring defective; rain water pipe defective; sink not trapped	30th December ..	Ditto	Ditto.

No. of Street or Name of Premises or Locality, &c.	Nature of Complaint.	Date of Attendance at Police Court.	Result.	Name of Officer.
RAG FLOCK ACT, 1911.				
Blackthorn Street.. ..	Occupier had possession of rag flock containing 375 parts of chlorine per 100,000	3rd July.. ..	Dismissed (See * below)	Boyce, W.
Old Ford Road	Occupier had possession of rag flock containing 412.5 parts of chlorine per 100,000	7th July.. ..	£5 penalty; £5 5s. costs ..	Ditto.
Vandy's Buildings, Libra Road	Occupier had possession of rag flock containing 400 parts of chlorine per 100,000	7th July.. ..	£5 penalty; £5 5s. costs ..	Ditto.
HOUSING, TOWN PLANNING, ETC, ACT., 1909.				
Tenant, 18, Chadbourne Street	Disobeyed Closing Order made by Council	6th March	48 hours' notice to quit ..	Johnson, W.
Ditto	Failed to comply with order to quit	28th March	£5 penalty	Ditto.
Ditto	Ditto	1st May	Sent to prison till family vacate	Ditto.
Tenant (E. L.), 327, West Ferry Road	Disobeyed Closing Order made by Council	7th March	48 hours' notice to quit ..	Tibbatts, H.
Ditto	Failed to comply with order to quit	28th March	Summons withdrawn; tenant removed	Ditto.

*The flock from which sample was taken had only just been delivered to Defendant by manufacturers. It had not been examined nor used by Defendant, who returned it to the manufacturers. Magistrate held the flock was not in possession of the Defendant for use, or intended for use in the manufacture of bedding.

POLICE COURT PROCEEDINGS—continued.

No. of Street or Name of Premises or Locality, &c.	Nature of Complaint.	Date of Attendance at Police Court.	Result.	Name of Officer.
Tenants (J. and M. K.), 321, West Ferry Road	Disobeyed Closing Order made by Council	6th March ..	48 hours' notice to quit ..	Tibbatts, H.
Ditto	Failed to comply with order to quit	28th March ..	Each defendant fined £2 10s. reduced later to £1 10s.	Ditto.
Tenants (F. and A. C.), 321, West Ferry Road	Disobeyed Closing Order made by Council	6th March ..	48 hours' notice to quit ..	Ditto.
Tenant (W. A. D.), 321, West Ferry Road	Disobeyed Closing Order made by Council	6th March ..	Ditto ..	Ditto.
Tenant (E. C.), 327, West Ferry Road	Disobeyed Closing Order made by Council	6th March ..	Adjourned; tenant removed	Ditto.

OVERCROWDING.

Sixteen cases of overcrowding were abated. Four cases of overcrowding were found in a workshop; 43 cases of overcrowding were also abated in connection with houses let in lodgings, or occupied by members of more than one family.

GENERAL.

7,384 communications were received, and 1,467 complaints (including 10 smoke) as to nuisances were made. 3,677 communications were despatched.

I am, Sir, Ladies and Gentlemen,

Your obedient Servant,

Fred R W Alexander.

Medical Officer of Health.

METROPOLITAN BOROUGH OF POPLAR,

PUBLIC HEALTH OFFICES, BOW ROAD, E.

June, 1920.

Report to Medical Officer of Health of Miss A. E. Hall, Chief Health Visitor.

PUBLIC HEALTH DEPARTMENT,
BOW ROAD, E. 3.

January 1st, 1920.

SIR,

I beg to present the twelfth Annual Report of the work of the Maternity and Child Welfare Department, the fifth under the Local Government Board's extended scheme for the Prevention of Infantile Mortality.

The visiting areas remain as before :—

Poplar Infant Welfare Association.

Undertake all the work south of the first bridges.

The Royal College of St. Katharine.

Undertake all the work between the first bridges and Bow Road.

The Public Health Department.

Undertake all the work north of Bow Road.

The working arrangement between the above bodies and this department continues to work smoothly.

The Treatment of Minor Ailments, and Ante-Natal Clinics were opened in June. The midwives in the district were invited to the opening of the latter to meet Dr. Dobson, and talk over things generally, and, although the feeling appeared to be against the necessity for such a Clinic, all promised their support. Flannel and wools, etc., were obtained to be retailed to the mothers attending, at cost prices, and advice on cutting out and making given. Two courses of lectures were arranged—one to be delivered by Dr. Dobson, and one by myself. The attendances were very gratifying, but all educational work had to be suspended when the Clinics were made distributing centres for free milk.

A very successful and unique party was given in July, jointly by the Mayoress (Mrs. W. Lax), Lady Yeo, and Mrs. Reginald Blair, between sixty and seventy mothers, with their twin children, accepting invitations.

The usual Baby Show was organised in connection with the Mayor's Garden Party.

Payment of the midwives' fee was made in two necessitous cases.

Part payment for Convalescent Home in one case.

The number of mothers delivered in institutions appears to be increasing (368), and knowing the difficulty there has been in obtaining vacancies for one or two cases, I think the time has arrived when the establishment of a Maternity Home in our own Borough should be considered.

VISITING.

	Public Health Dept.	Poplar Infant Care Assocn.	The Royal College of St. Katharine.	Total.
ANTE-NATAL	84	225	1,939	2,278
POST-NATAL—				
Visits	678	493	2,525	3,696
Removed before visit	2	2	31	35
Died before visit	15	9	53	77
Still-born	89	—	14	103
Revisits—				
Under one	1,102	1,975	20,337	23,414
One—five	3,393	3,949	44,285	51,627
Removed	87	97	255	439
Died	51	49	185	285
ZYMOTIC ENTERITIS—				
Visits	63	30	352	445
Revisits	22	93	594	709
Died	5	5	4	14
MEASLES—				
Visits	20	64	134	218
Revisits	5	81	285	371
Died	—	—	3	3
OPHTHALMIA NEONATORUM—				
Visits	58	—	—	58
Revisits	62	—	—	62
MISCELLANEOUS... ..	301	—	2,037	2,338

Total Visits paid 85,448

STILLBIRTHS.

Number of stillbirths	105
Delivered in institutions—No information available	9
Premature births	26
Fœtus macerated	22
First pregnancies	20
Mothers who worked during pregnancy	13
Instrumental deliveries (forceps)	8
Cæsarean section	1
Transverse presentations	2
Prolapse of cord	3
Arrested development (five months' twins)	2
Breech presentations	13
Ante-partum hæmorrhage	15
Malformation (child)	1
Abnormally short cord	2
Cord round neck	2

Mothers who had had previous stillbirths :—

One.	Two.	Three.	Four.	Five.
13	3	3	2	1

Five have had one mis-carriage, four—two miscarriages, and two—three mis-carriages. Eight attributed the fact that the child was stillborn to “shock,” eight to “accidents,” six to “ill-health,” one to attending a “peace party,” and one to “riding on a lorry-bus.”

NURSING.

	Ophth. Neon.		Measles.		Zy. Enteritis.		Influenza.	
	Cases.	Visits.	Cases.	Visits.	Cases.	Visits.	Cases.	Visits.
East London Nursing Society	9	365	8	103	3	19	6	87
St. John Divine	3	120	—	—	—	—	—	—
Millwall & Cubitt Town ..	2	9	3	35	1	13	—	—
The Ranyard Nurses ..	2	55	—	—	—	—	—	—
Total	16	599	11	138	4	32	6	87

BOW MATERNITY CLINICS.

Ante-Natal :—

Expectant mothers (first attendance)	38
" " (total attendances)	67
Potential mothers (first attendance)	63
" " (total attendances)	171

Total attendance at Ante-Natal Clinic	...	339
---------------------------------------	-----	-----

Infants :—

First attendance	400
Total attendances...	3,443
Average weekly attendance	67.9
Average attendance each child	5.8

Treatment :—

Minor ailments (first attendance)	136
" " (total attendances)	271

Vouchers issued (cod liver oil, etc.)	1,386
Galactagogue	71 pkts.
Sugar	17½ lbs.
Dried milk	4,110 lbs.
Spectacles, bandages, etc.	23
Cows' milk, free...	5,824 pints.

Money taken	£392 12 2
Free issue	£16 11 6

OPHTHALMIA NEONATORUM.

Number of notifications received	61
Sight of one eye destroyed	1
Recovered	60
Occurred in the practice of medical practitioners	12
Occurred in the practice of midwives	49
Admitted to hospital as in-patients...	10
Treated as hospital out-patients	12
Treated privately	39
Visited by a nurse	16

ZYMOTIC ENTERITIS.

Visited	498
Failed to trace	3
Under 1 year	146
1 to 2 years	204
2 to 3 years	86
3 to 4 years	39
4 to 5 years	20

FEEDING.

Age period.	Breast.	Mixed feeding.	Hand fed.	Not stated.
Under 1 year	51	23	62	10
1 to 2 years	10	30	154	10

MEDICAL ADVICE OBTAINED.

Same day	56
1 day	94
2 days	97
3 days	47
4 days	21
5 days	13
6 days	14
7 days	15
No information or too doubtful to use	138

VITAL STATISTICS, 1918.

All births, including those occurring in out-lying districts, but belonging to the Borough and stillbirths	3,245
Attended by doctors	498
Attended by midwives	2,270
Delivered in institutions	368
Not stated	109
Stillborn	102
Died before visit	77
Not requiring or not desiring visits	292
Visited	2,774
Removed and not traced	229
Died during visitation	173
Remaining under supervision end of first year of birth	2,372
Mortality per 1,000 births	95.3
Stillbirths per 1,000 births	31.4
Mortality per 1,000 visited	67.9

The feeding of the infants during the first six months of life was as follows :—

- Those alive at end of completed year (December, 1918)—

Breast fed	76.1 per cent.
Mixed feeding	20.2 „
Hand-fed	3.6 „
- Those who died—

Breast fed	53.7 „
Mixed feeding	36.9 „
Hand-fed	9.2 „
- Comparison of rates of mortality between infants—

Breast-fed	4.8 per cent.
Mixed feeding	11.3 „
Hand-fed	15.6 „

VITAL STATISTICS, 1917.

Remaining under supervision end of first year	...	2,498
Found	40
Given up	14
Removed and not traced	182
Died	121
Remaining under supervision end of second year		2,221
Mortality per 1,000 visited, second year	51.6

VITAL STATISTICS, 1916.

Remaining under supervision end of second year		2,554
Found	11
Removed and not traced	159
Died	58
Remaining under supervision end of third year	...	2,348
Mortality per 1,000 visited, third year	24.1

VITAL STATISTICS, 1915.

Remaining under supervision end of third year	...	2,364
Not desiring or requiring further visits	6
Removed and not traced	96
Died	41
Remaining under supervision end of fourth year	...	2,221
Mortality per 1,000 visited, fourth year	18.1

VITAL STATISTICS, 1914.

Remaining under supervision end of fourth year	...	1,599
Removed and not traced	63
Died	13
Remaining under supervision end of fifth year	...	1,523
Mortality per 1,000 visited, fifth year	8.4

I remain, Sir,

Your obedient Servant,

ALICE E. HALL.

THE HISTORY OF THE

... of the ...
... of the ...
... of the ...
... of the ...
... of the ...

THE HISTORY OF THE

... of the ...
... of the ...
... of the ...
... of the ...
... of the ...

THE HISTORY OF THE

... of the ...
... of the ...
... of the ...
... of the ...
... of the ...

THE HISTORY OF THE

... of the ...
... of the ...
... of the ...
... of the ...
... of the ...

THE HISTORY OF THE

... of the ...
... of the ...
... of the ...
... of the ...
... of the ...