

Annual report on the vital statistics and sanitary condition of the Borough of Lewisham for the year 1901.

Contributors

Lewisham (London, England). Borough.
Harris, A. Wellsley.

Publication/Creation

London : Freame, Manning, [1902]

Persistent URL

<https://wellcomecollection.org/works/jk3xtdnz>

License and attribution

You have permission to make copies of this work under a Creative Commons, Attribution, Non-commercial license.

Non-commercial use includes private study, academic research, teaching, and other activities that are not primarily intended for, or directed towards, commercial advantage or private monetary compensation. See the Legal Code for further information.

Image source should be attributed as specified in the full catalogue record. If no source is given the image should be attributed to Wellcome Collection.



Wellcome Collection
183 Euston Road
London NW1 2BE UK
T +44 (0)20 7611 8722
E library@wellcomecollection.org
<https://wellcomecollection.org>

BOROUGH OF LEWISHAM.

ANNUAL REPORT

ON THE

VITAL STATISTICS AND SANITARY CONDITION

OF THE

BOROUGH OF LEWISHAM

For the Year 1901,

BY

A. WELLESLEY HARRIS, M.R.C.S., D.P.H., &c.

*Medical Officer of Health and Public Analyst for the Borough
of Lewisham.*

Fellow and Member of the Council of the Sanitary Institute.

Fellow of the Epidemiological Society &c.

London :

Printed by FREAME, MANNING & Co., 12a, Lee High Road, Lewisham, S.E.



BOROUGH OF LEWISHAM.

EPITOMÉ OF VITAL STATISTICS, 1901.

Area in acres exclusive of area covered by water	...	6,991
Enumerated population (Census, 1901)	127,495
Estimated population to the middle of 1901	128,480
Average number of persons per house	5·6
Total number of Births registered in the Borough	...	3,320
Birth Rate per 1,000 estimated population	25·9
Total number of Deaths registered in the Borough	...	1,875
Total number of Deaths registered in the Borough, after correction for non-residents dying in Public Institutions, and residents dying outside the District		1,668
Deaths of persons under 1 year of age	426
Rate per 1,000 births registered...	128
Total number of Deaths in Public Institutions...	...	613
Deaths of non-residents in Public Institutions in the Borough	289
Deaths of residents in Institutions outside the Borough		82
Corrected Death-rate per 1,000 of the estimated popu- lation	13·0

To the Mayor, Aldermen and Councillors of the Borough of Lewisham.

Gentlemen,

I beg to submit to you my first Annual Report on the Health and Sanitary Condition of the Borough of Lewisham during the year **1901**.

It was not until the end of August that I had the honour of commencing my duties, and in consequence of the absence of office records it has been difficult to collect the facts contained therein.

The alteration of areas in the formation of the existing Borough has made it quite impossible to obtain comparative statistical figures for previous years.

The time devoted to organising the Department, together with the large amount of work entailed by the threatened invasion of Small-pox, and the necessity of waiting for the issue of the Census Returns for the County of London, are mainly responsible for the delay of issue.

The health of the district is highly satisfactory. The death rate from all causes amounted to **13·0 per 1,000**, the lowest in London except Hampstead, and far below the average for England and Wales and the 33 great towns.

The mortality from the principal infectious diseases, **1·62 per 1,000**, compares most favourable with other Boroughs.

The infantile mortality is nearly the lowest in London, only four Boroughs having a lower mortality.

The mortality from Phthisis, **·93 per 1,000**, is, with the exception of Hampstead (**·91 per 1,000**), the lowest in London.



The density of a population has a great effect upon the Public Health. Lewisham maintains a high position in this respect, having 18·3 persons per acre of area, the lowest number in London except Woolwich, 14·2 persons per acre.

With respect to the housing of the inhabitants, Lewisham is in a better position than any other London borough.

The attack rates from all infectious diseases compare favourably with other districts. In regard to small-pox we were most fortunate. Eleven notifications were received, six of which proved to be genuine.

On the 4th of November, I drew the attention of the Lewisham Board of Guardians to the necessity of obtaining the vaccination or re-vaccination of school children. The communication was considered by the Board who decided to take no action. I am pleased to state, however, the Guardians re-considered the matter. While this Report was in press, I was supplied by the courtesy of the Board and Mr. Atkins, with figures showing that 2,549 children have been examined at four Schools, 121 of which were vaccinated in consequence of such examination. I am also informed that the whole of the schools in the Borough will be visited. Other figures relating to vaccination are set out in the report.

So far as the Staff are concerned, I reported upon the insufficient number of Sanitary Inspectors, and your Council authorised the appointment of two additional Officers. The Clerical Staff I fear will be inadequate to cope with the work of the office.

I remain,

Your obedient Servant,

A. WELLESLEY HARRIS,

Medical Officer of Health.

July 1902.

CONTENTS.

	PAGE		PAGE
Age period in relation to		Marriages	36
Infectious Disease ... 52 & 54		Persons per House ...	13
Area of the Borough ...	11	Phthisis, Deaths from 32, 33 & 34	
Births	26	Population, Age Distri-	
Birth Rates	27	bution of	18
Civil Parishes	11	Population, Enumerated,	
Cowsheds	59	Census, 1901	12
Deaths	27	Population, Density of...	16
Death Rate	29	Population, Estimated ...	26
Deaths, Age Distribution of	28	Population, Occupations of	17
Deaths in Public Institutions	29	Register of Sanitary Work	62
Deaths of Residents in		School Closure	58
other Districts ... 30 & 31		Seasonal Mortality ...	35
Disinfection	58	Slaughter-Houses ...	60
Domestic Service ...	17	Tenements	14
Houses let in Lodgings...	59	Vaccination Returns ...	53
Infant Mortality ...	35	Water Certificates ...	61
Infectious Diseases ... 47 to 53		Wells Closed	58
Inhabited Houses ...	13	Workshops	60
Inspection of Houses ...	58	Zymotic Deaths ...	35

SYNOPSIS OF TABLES AND CHARTS.

Table 1. Showing the Population, Decennial Increase, Inhabited Houses, Area, and Density of population of the Borough and its Divisions : Census 1901.

Table 2. Showing the distribution of Houses, Population, etc., in separate Wards : Census 1901.

Table 3. Showing total number of Tenements, and Tenements of less than Five Rooms in the Borough, distinguishing those occupied by various numbers of persons.

Table 4. Showing the disposal of Families or separate Occupiers in Tenements of over and under five rooms in the Metropolitan Boroughs.

Table 5. Showing the estimated Populations, Areas, Densities and Death Rates of the Metropolitan Boroughs, 1901, arranged in order of density.

Table 6. Showing number of persons living in the Borough at the Census, 1901, at seven age periods.

Table 7. Showing Births and Birth Rates for each Division of the Borough, 1901.

Table 8. Showing number of Deaths and Death Rates in each Division of the Borough, for the year 1901.

Table 9. Showing number of Residents and Non-residents dying in Public Institutions situated in the Borough.

Table 10. Showing Death Rates calculated per 1,000 persons living at all ages in the Administrative County of London, and Metropolitan Boroughs during the 52 weeks of 1901, after distribution of Deaths in Public Institutions.

Table 11. Showing Quarterly distribution of Deaths for the whole Borough and its Divisions.

Table 12. Showing Meteorological Records at Greenwich, total Deaths, and Deaths from three groups of Diseases in the Borough of Lewisham for each week of the year 1901.

Table 13. Showing causes of, and Ages at, Deaths during the year 1901.

Table 14. Showing Deaths from the principal Zymotic Diseases for the Borough and its Divisions during the year 1901.

Table 15. Showing Death Rates from the principal Zymotic Diseases for the Borough and its Divisions during the year 1901.

Table 16. Age distribution of Deaths from Zymotic Diseases occurring in the Borough during the year 1901.

Table 17. Showing cases of Infectious Disease notified during the year 1901 in the Borough and its divisions.

Table 18. Number of Cases of Infectious Diseases notified in the several Boroughs and the Administrative County of London during the 52 weeks ended 28th December, 1901.

Chart A. Shewing percentage Number of Persons in Seven Groups of Occupation to Total Population.

Chart B. Density of Population. Showing number of persons per acre in each Metropolitan Borough.

Chart C. Showing percentage of Deaths, in Thirteen Groups, to total registered Deaths, 1901.

Chart D. Showing weekly total deaths from all causes, and from Respiratory Diseases and Diarrhœa.

Chart E. Showing weekly Notifications of Infectious Disease,

REPORT OF THE MEDICAL OFFICER OF HEALTH FOR THE YEAR 1901.

AREA OF THE BOROUGH.

The area of the Borough given by the Registrar General in his Census Returns is 7014.4 acres, including 23.4 acres of water area. The distribution of area over districts is as follows:—Lee, 1815.3, Lewisham, 2630.3 and Sydenham and Forest Hill, 1717.3 acres.

PART I.

POPULATION AREA, DENSITY, AGE DISTRIBUTION, &C.

CENSUS, 1901.

REPORT OF THE MEDICAL OFFICER OF HEALTH FOR THE YEAR 1901.

AREA OF THE BOROUGH.

The area of the Borough given by the Registrar General in his Census Returns is **7014.4 acres**, including **23.1 acres** of water area. The distribution of area over districts is as follows :—**Lee, 1616.3, Lewisham, 3680.3 and Sydenham and Forest Hill, 1717.8 acres**

Compared with other Metropolitan Boroughs, Lewisham is the third largest in extent, its area being exceeded by Wandsworth, 9,129 and Woolwich, 8,276 acres.

The Borough of Lewisham, constituted in November 1900, under the London Local Government Act 1899, is made up of the civil parishes:—Lee and Lewisham; containing the following Wards:—

Lee:—Church, Manor and South Wards,

Lewisham :—Blackheath, Lewisham Village, Lewisham Park, Brockley, Catford, Forest Hill and Sydenham Wards.

It has been customary to divide the Borough into three divisions, viz :—

No. 1. Lee	{	Manor Ward	No. 2.	{	Blackheath Ward
		Church „			Lewisham Village Ward
		South „			„ Park „
					Brockley „
			Lewisham	{	Catford Ward „
			No. 3.	{	Sydenham Ward
					Forest Hill Ward
		Sydenham and Forest Hill			

Each division has its own administrative Committee.

Prior to November, 1900, the Lewisham District included Penge. On the formation of the existing Borough, Penge, was excluded and the Civil Parish of Lee added.

The boundaries of the Lewisham District were further changed by the removal or addition of small areas :—

Camberwell transferred to Lewisham an area having a population in 1901 of 90 persons.

Dulwich	„	„	„	784	„
Greenwich	„	„	„	883	„
Eltham	„	„	„	28	„
Charlton	„	„	„	3	„
Total				1784	

Lewisham transferred to Woolwich an area having a population in 1901 of 15 persons.

„	„	Greenwich	do.	1116	„
„	„	Camberwell	do.	1643	„
Total				2774	

Owing to the alteration of the old boundaries and areas in the formation of the new Borough, and the absence of statistical records for the old districts it is impossible to obtain accurate figures for periods prior to the present year and for this reason many comparative figures are necessarily omitted.

POPULATION.

The enumerated population in 1891 for the area which now constitutes the Borough amounted to 88,933 against 127,495 in 1901, showing an increase in ten years of 38,562 persons. This is equal to an increase of 431 for every 1,000 persons recorded in the Census of 1891.

Dealing with the divisions of Lee, Lewisham and Sydenham and Forest Hill it will be found that the per centage increase, based upon the enumerated populations of each division in 1891 and 1901, amounted to an increase in **Lee** of **10.3** per cent, in **Lewisham** **87.88** per cent and in **Sydenham and Forest Hill**, **25.5** per cent. (*Vide* Table 1.)

INHABITED HOUSES.

The Census returns show that the Borough contained **22,750** dwelling houses in 1901, compared with **15,377** in 1891, an increase of **7,373** or **48.0** per cent, in the decennial period, compared with an increase of **43.1** per cent. in the population.

It is fortunate that buildings were erected which provided accommodation slightly in excess of the increased population thus avoiding over-crowding.

As one would expect, building operations were carried out most extensively in the Lewisham division, to which is allocated **68.8** per cent. of the total new houses erected in the Borough. Sydenham and Forest Hill follows with **24.8** per cent., and Lee **6.5** per cent.

Only a little more than half of the available building land has yet been covered, and there is every reason to believe that extensive building operations will continue for some years, especially in the Lewisham division.

PERSONS PER HOUSE.

The **22,750** houses in the District contained **27,701** separate families or occupiers while the number of persons per house, amounted to **5.6** for the whole district. (*Vide* Table 2.)

TENEMENTS.

No definition of the word is given, but it appears to mean the home of a separate family or separate occupier.

The total number amounted to **27,701** of which **19,140** contained **five rooms and over**. The balance, **8,561**, were tenements or houses of **less than five rooms**.

The proportion of families or separate occupiers in homes containing less than five rooms to total families and the percentage of the population housed in one roomed homes forms a valuable index of the social condition, wealth or poverty of a community. The same factors are useful in judging under what conditions the working classes are housed and the need for improvement, if any, in a district.

The Borough of Lewisham compared with other London Boroughs stands the highest in this respect. Out of every hundred families or separate occupiers only **30.9** occupy homes of **less than five rooms**, the lowest proportion of any London Borough. Hampstead 42.2, is next in order, Wandsworth, 42.3, Stoke Newington, 49.1, Kensington, 55.0, Greenwich 55.2 &c. (*Vide* Table 4.)

Of the 8,561 homes or tenements of less than five rooms there were:—

970 homes of **one room** containing 1,488 persons, or **1.16** per cent. of population.

1,720 homes of two rooms containing 4,552 persons, or **3.59** per cent. of population.

2,490 homes of three rooms containing 8,550 persons, or **6.7** per cent. of population.

3,381 homes of four rooms containing 14,308 persons, or **11.22** per cent. of population.

ONE-ROOM TENEMENTS.

As these form both living and sleeping rooms it is necessary that a minimum of 400 cubic feet per head should be insisted upon, also that adequate means of ventilation are provided. The air of such rooms is usually polluted, and where they are overcrowded the health of the occupants must suffer.

Of the nine hundred and seventy one-roomed homes recorded:—

631	contained	1	person.
209	„	2	persons.
94	„	3	„
26	„	4	„
8	„	5	„
1	„	6	„
1	„	7	„

We have in Lewisham a less number of persons living in one-roomed homes than any other London borough. The total number of persons living in one-roomed homes amounted to 1,488, or 1·16 per cent. of the entire population. Wandsworth comes next in order with 1·38 per cent.; Hampstead, 2·21; while Holborn is credited with the highest percentage 14·41 (*Vide* Tables 3 and 4).

Of the total one-roomed tenements in the Borough of Lewisham 65 per cent. are occupied by one person only, 21·5 per cent. by two persons, 9·7 by three persons, 2·5 per cent. by four persons, and 0·82 by five persons. In one case six persons, and in another, seven persons were returned as occupiers of a single room.

The occupation of single room tenements by one and two persons requires no special comment. There may, however, be overcrowding where three and generally where four or

more persons occupy a single room. In many instances such occupations consist of parents and their children. In only twenty-six instances were four persons found occupying one room. The foregoing facts point to an absence of any serious overcrowding in the district.

TWO-ROOMED HOMES.

These number 1,720, housing 4,582 persons, or 3.59 per cent. of the total population. Two-roomed homes are not so likely to become overcrowded as those previously described. One room is most frequently used as a sitting room and kitchen. Where they are occupied by families of four persons then the second room is most probably used as a bedroom. Five persons and over to two rooms generally implies overcrowding.

Analyses of two, three and four-roomed homes are set out in Table 3.

DENSITY.

By this term is meant the average number of persons residing in the Borough to each acre of land.

The health of a district is greatly influenced by the environments and the density of its inhabitants. Overcrowding on space, accompanied as it generally is by narrow streets, high buildings, insufficient light and air and ventilation, leads to high mortality among persons so situated.

The borough is most fortunate in this respect compared with other London districts. It has a good elevation and is bounded for the most part by open country, while nearly half its area is unbuilt upon. These conditions have in themselves a considerable effect on the health of its residents. The density,

*18·3 persons per acre, with the exception of Woolwich, is the lowest in London. (*Vide* Table 5 and Chart B.)

OCCUPATION AND EMPLOYMENT.

The following is a list of the principal occupations :—

Persons.	Employment.
1,563	National or Local Government.
3,901	Professional, legal, clerical, medical, teaching, &c.
11,352	Domestic service.
7,880	Commercial occupations, including clerks.
3,768	Conveyance of goods, &c.
3,040	Engaged in building operations.
3,135	Retired, or living on own means.
20,008	Of no occupation, including students over ten years of age.

DOMESTIC SERVICE.

Eleven thousand three hundred and fifty two persons were employed in domestic service. Of this number 9,502 were indoor servants in houses, not hotels, lodging-houses or restaurants.

The percentage of domestic indoor servants to families or separate occupiers residing in a district is a fair guide to the social position and wealth of its inhabitants. The percentage in the Borough equals 36·2.

Of the 28 boroughs only seven can claim a higher percentage. (*See* Table 4.)

* Calculated upon the estimated population.

AGE DISTRIBUTION.

The number of persons living in the Borough at seven age periods is set out in Table 6.

PUBLIC INSTITUTIONS.

The following is a list of hospitals, infirmaries and other public institutions situated within the borough and receiving persons from outside districts:—

Institution.				Persons.	Officials.
St. John's Hospital	34	21
Lewisham Workhouse	473	22
Lewisham Infirmery	232	53
St. Olave's Workhouse	311	49
Park Fever Hospital	266	209
Flower House Asylum	21	8
East London Industrial School for Boys				150	11
Home for Sick Children, Sydenham	...			37	13
Home for Inebriates	20	3

Chart A

Showing Percentage Number of Persons in Seven groups of Occupation to Total Population.

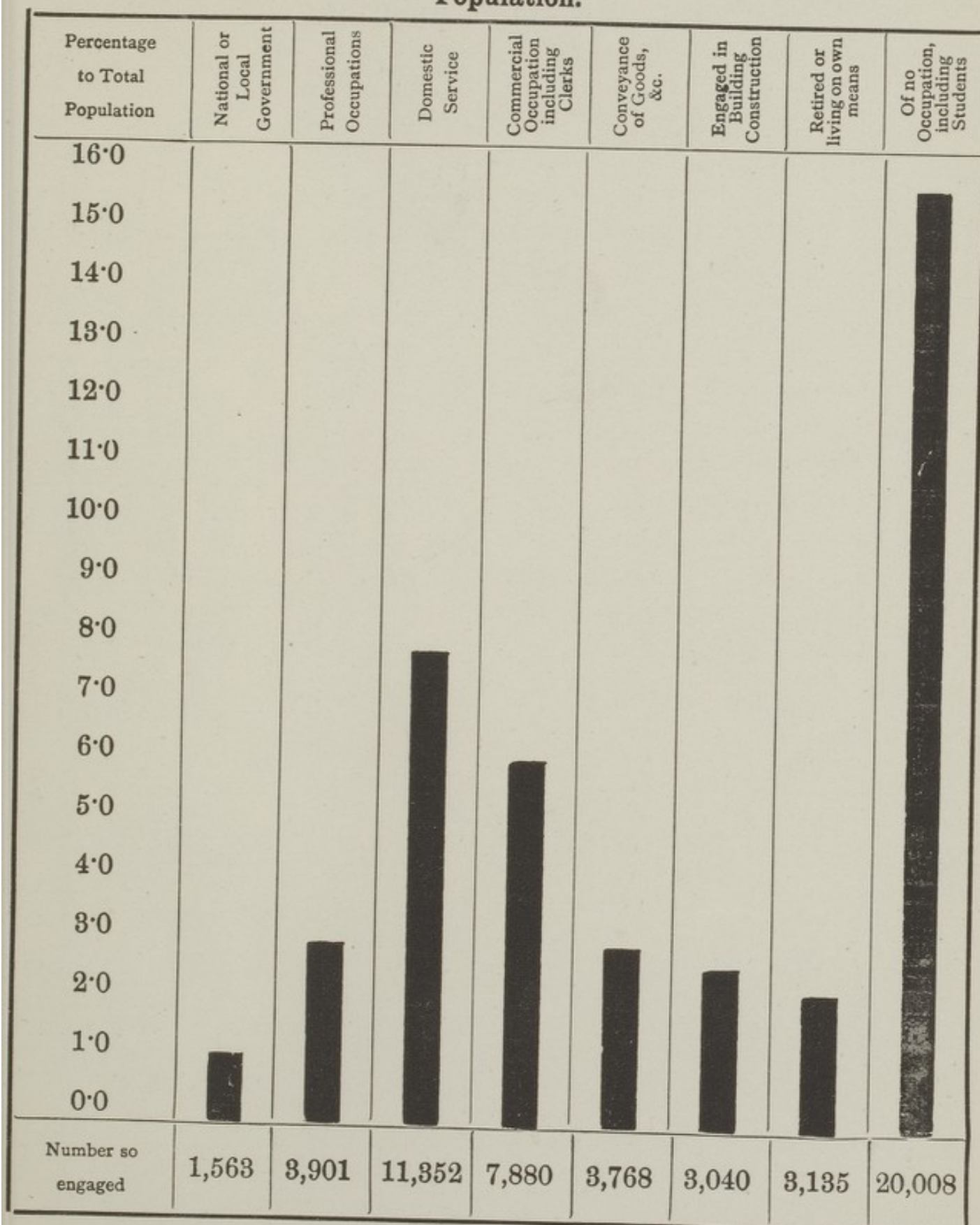


Chart A

Bar chart showing the percentage of population in various age groups, by sex.

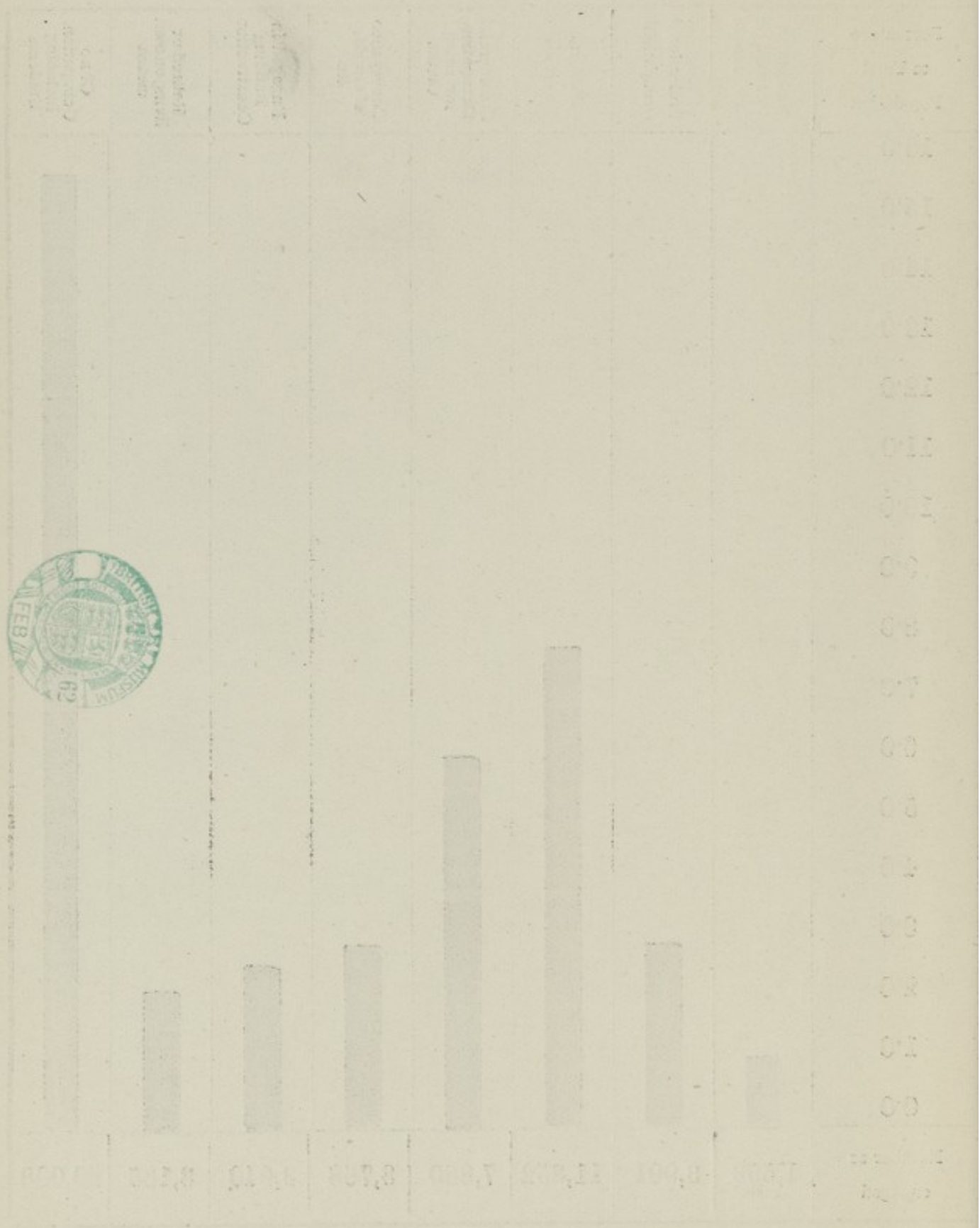


Table 1.

*Showing the Population, Decennial Increase, Inhabited Houses, Area, and Density
of Population of the Borough and its Divisions.*

Census 1901.

District.	Census Population.		Increase.	Per- centage Rate of Increase.	Inhabited Houses.		Persons per House.	Area in Statute Acres.	Density of Population. Persons per Acre.
	1891.	1901.			1891.	1901.			
Lee	23,097	25,490	2,393	10·3	3,917	4,400	5·7	1616·3	15·7
Lewisham ...	31,063	58,352	27,289	87·88	5,467	10,541	5·5	3680·3	15·8
Sydenham and Forest Hill ...	34,773	43,653	8,880	25·5	5,993	7,809	5·57	1717·8	25·4
Whole Borough ...	88,933	127,495	38,562	43·1	15,377	22,750	5·6	7014·4	18·1

Table 2.

Showing the distribution of Houses, Population, etc., in separate Wards:
Census 1901.

Ward.		Inhabited Houses.	Uninhabited Houses.		Houses Building.	Persons per House.	Population.		
			In Occupation.	Not in Occupation.			Total.	Male.	Female.
Lee Division.	Church ...	1,147	32	77	2	5.59	6,412	2,556	3,856
	Manor ...	1,190	25	67	—	5.6	6,734	3,008	3,726
	South ...	892	14	36	19	6.1	5,503	2,173	3,330
Lewisham Division.	Blackheath.	1,146	24	41	2	5.8	6,729	2,814	3,915
	Lewisham Vill.	2,549	61	71	128	5.4	13,842	6,449	7,393
	Lewisham Park	1,777	19	83	42	6.2	11,145	5,129	6,016
	Brockley ...	1,971	17	104	59	5.5	10,952	4,982	5,970
Sydenham and Forest Hill Division.	Catford ...	4,404	47	262	185	5.2	23,203	10,968	12,235
	Forest Hill	3,325	66	212	102	5.4	18,051	7,835	10,216
	Sydenham	4,349	75	264	59	5.2	24,924	10,835	14,089
The Entire Borough ...		22,750	380	1,217	598	5.6	127,495	56,749	70,746

Table 3.

*Showing Total Number of Tenements and Tenements of less than Five Rooms in the Borough
distinguishing those occupied by various number of persons.*

Total No. of Tenements—27,701.

Tenements of less than Five Rooms—8,561.

District.	Tenements of less than Five Rooms.	No. of Rooms in Tene- ment.	PERSONS PER TENEMENT.												Total persons.	Percentage of population.
			1 person.	2 persons.	3 persons.	4 persons.	5 persons.	6 persons.	7 persons.	8 persons.	9 persons.	10 persons.	11 persons.	12 persons.		
The Borough of Lewisham.	970	1	631	209	94	26	8	1	1	—	—	—	—	—	1,488	1.16
	1,720	2	340	587	392	233	92	52	11	9	2	1	1	—	4,582	3.59
	2,490	3	153	665	692	428	248	172	75	37	16	3	—	1	8,550	6.7
	3,381	4	91	613	747	590	510	365	240	120	65	21	13	6	14,308	11.22

Table 4.

Showing the disposal of Families or separate Occupiers in Tenements of over and under five rooms in the Metropolitan Boroughs.

Name of District.	Out of every 100 Total Families or separate Occupiers, the Number occupying Tenements of fewer than 5 rooms was	Out of every 100 Total Families or separate Occupiers, the following number occupied Tenements of				Total number of persons living in One-roomed Tenements.	Percentage of Population living in One-roomed Tenements	Percentage of Domestic indoor Servants to Families or separate Occupiers
		1 room	2 rooms	3 rooms	4 rooms			
City of London	61.95	15	20	17	10	1,421	5.27	37.6
Battersea ...	61.8	9	15	20	18	6,342	3.75	13.1
Bermondsey ...	75.8	15	24	20	17	8,706	6.65	6.6
Bethnal Green	84.1	19	26	24	15	12,755	9.83	5.8
Camberwell ...	56.0	9	14	17	16	8,856	3.41	15.3
Chelsea ...	69.1	21	21	17	10	6,609	8.95	55.2
Deptford ...	56.69	8	13	16	20	4,080	3.70	15.4
Finsbury ...	85.13	26	33	17	9	14,416	14.20	8.2
Fulham ...	67.4	8	14	25	21	4,426	3.22	18.6
Greenwich ...	55.2	7	13	15	20	2,392	2.49	24.5
Hackney ...	59.6	10	15	19	16	8,943	4.07	17.9
Hammersmith	60.0	10	17	19	14	4,942	4.40	19.3
Hampstead ...	42.2	6	14	14	8	1,819	2.21	81.4
Holborn ...	78.1	27	28	16	7	8,502	14.31	22.3
Islington ...	70.5	16	24	18	13	25,988	7.75	15.5
Kensington ...	55.01	15	20	12	8	11,334	6.41	80.0
Lambeth ...	62.7	14	17	17	15	18,932	6.26	18.1
Lewisham ...	30.9	4	6	9	12	1,488	1.16	36.2
Paddington ...	64.8	15	20	20	10	9,233	6.41	50.2
Poplar ...	73.2	11	18	23	21	8,274	4.90	8.1
St. Marylebone	72.5	26	26	13	8	16,408	12.31	51.4
St. Pancras ...	78.9	24	29	16	10	27,464	11.67	16.9
Shoreditch ...	84.8	25	28	19	13	15,053	12.68	5.7
Southwark ...	82.8	21	26	21	15	20,151	9.77	7.8
Stepney ...	80.4	22	26	20	13	34,519	11.56	8.8
Stoke Newington	49.1	8	13	16	12	1,456	2.84	27.8
Wandsworth ...	42.3	4	7	15	16	3,217	1.38	35.2
Westminster ...	64.5	18	23	15	8	14,008	7.65	65.8
Woolwich ...	57	7	14	17	19	3,092	2.63	14.4

Table 5.

Showing the estimated Populations, Areas, Densities and Death-rates of the Metropolitan Boroughs, 1901, arranged in order of density.

Boroughs.	Population.	Area. Acres.	Density. Persons per acre.	Death-rate from all Causes.	Zymotic Death-rate.
Woolwich ...	117,619	8,276	14·2	14·6	1·51
Lewisham ...	128,480	7,014	18·3	13·0	1·62
Greenwich ...	96,188	3,852	24·9	15·3	2·17
Wandsworth ...	233,943	9,129	25·6	13·4	1·55
Hampstead ...	82,287	2,265	36·3	10·6	1·02
City of London ...	26,627	671	39·7	20·1	1·06
Hammersmith ...	112,619	2,286	49·3	17·0	2·86
Camberwell ...	259,897	4,480	58·0	16·5	2·44
Stoke Newington ...	51,238	863	59·0	13·1	1·26
Hackney ...	219,780	3,288	66·8	15·7	2·14
Deptford ...	110,732	1,562	70·8	16·5	2·48
Poplar ...	168,887	2,327	72·6	20·0	3·04
City of Westminster ...	182,502	2,502	72·9	16·0	1·34
Lambeth ...	302,460	4,080	74·1	17·3	2·15
Kensington ...	176,787	2,291	77·1	15·2	1·83
Battersea ...	169,364	2,160	78·4	16·4	2·76
Fulham ...	138,426	1,703	81·2	15·8	2·81
Bermondsey ...	130,348	1,500	86·9	20·9	2·90
St. Pancras ...	235,297	2,694	87·3	18·2	2·40
St. Marylebone ...	133,060	1,742	90·4	16·6	1·65
Paddington ...	144,154	1,356	106·4	14·3	1·72
Islington ...	335,325	3,092	108·4	15·9	1·87
Chelsea ...	73,879	660	111·9	16·6	1·31
Holborn ...	59,205	405	146·1	20·1	2·28
Stepney ...	298,884	1,765	169·3	20·9	2·54
Bethnal Green ...	129,700	750	171·8	20·3	2·88
Finsbury ...	101,623	589	172·2	21·4	2·75
Shoreditch ...	118,554	658	180·1	21·8	2·98
Southwark ...	206,219	1,131	182·3	21·5	3·02
County of London ...	4,544,983	74,839	60·7	17·1	2·22

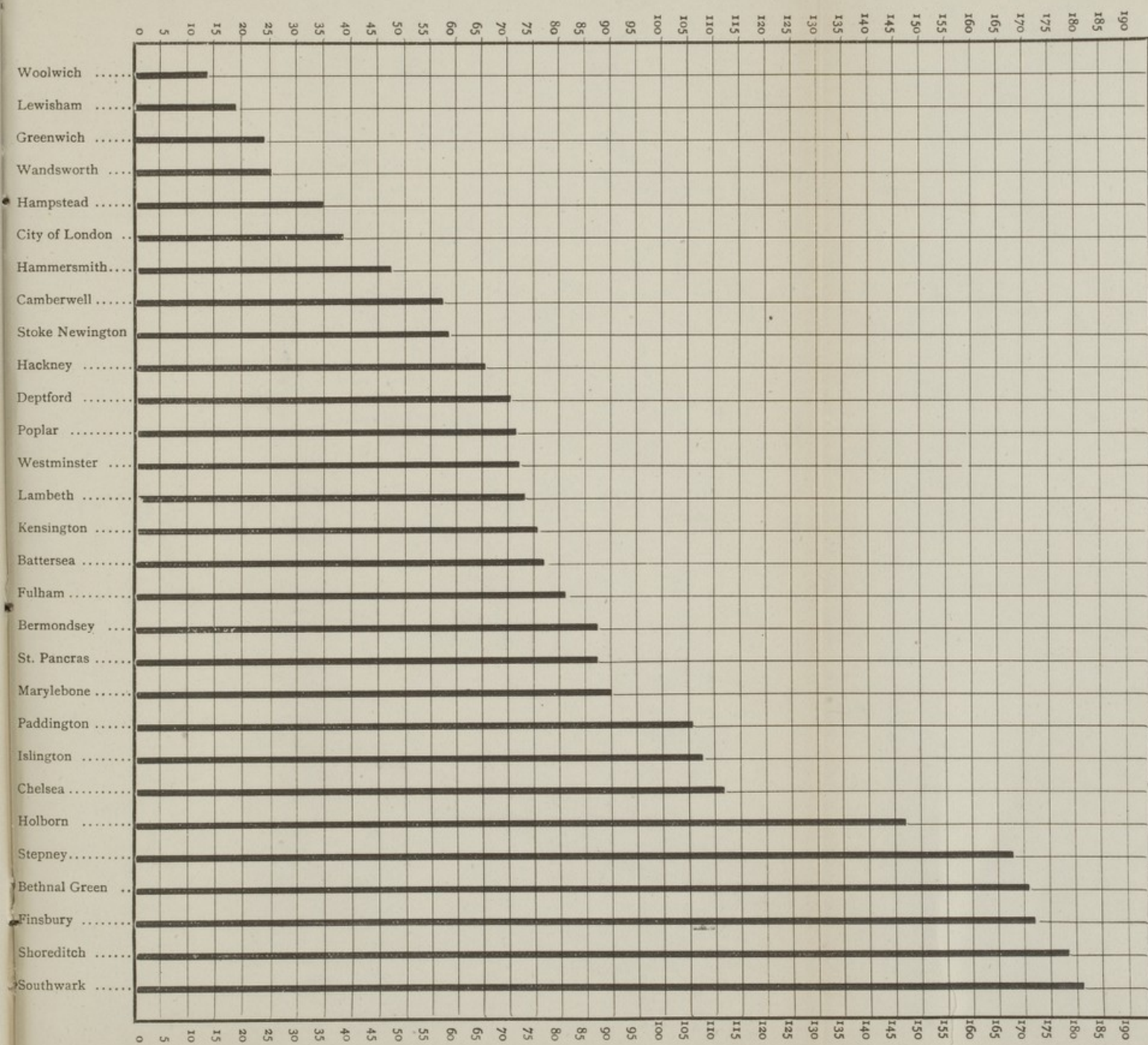
Table 6.

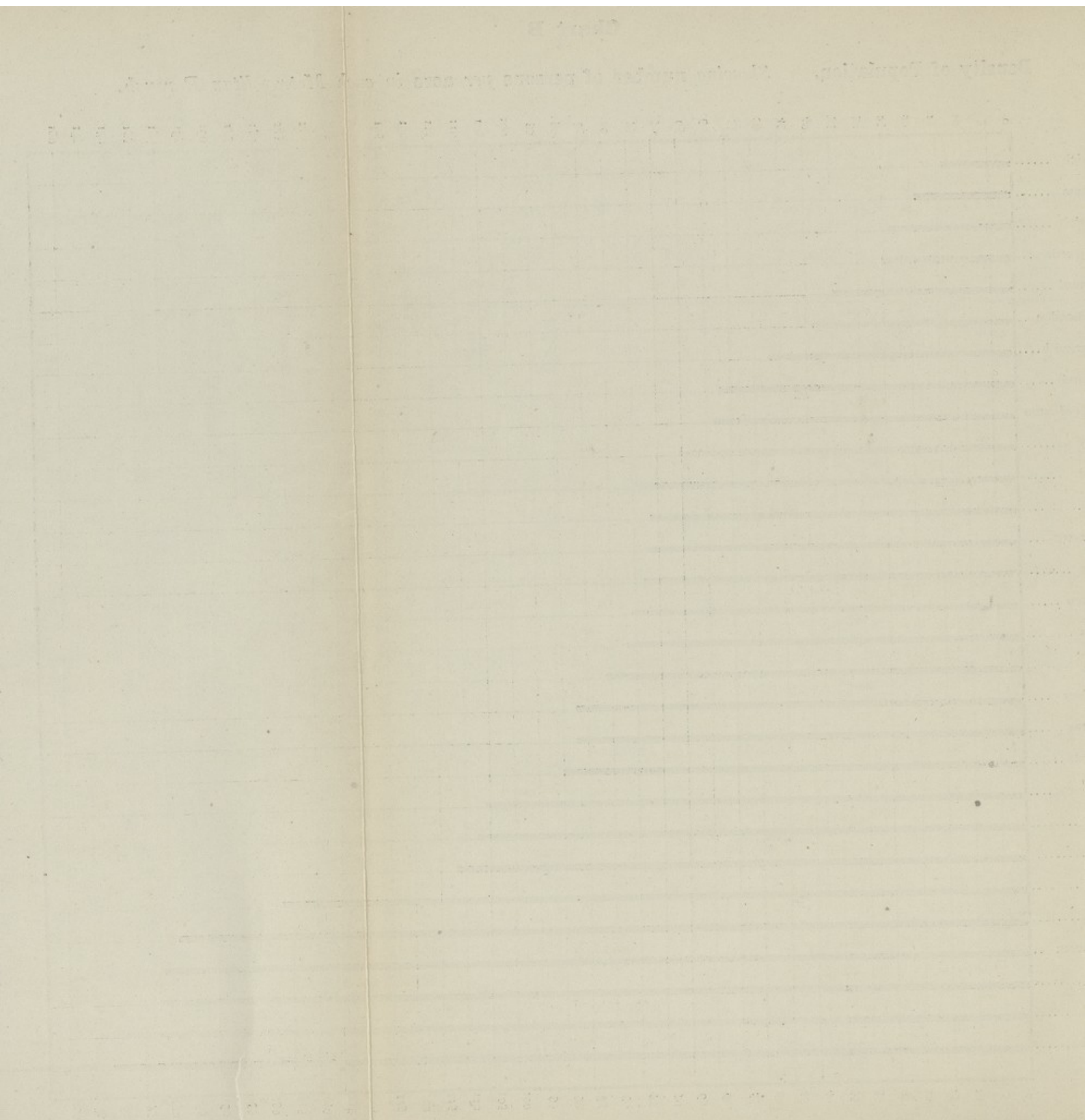
*Showing number of Persons living in the Borough at the Census, 1901,
at seven age periods.*

Age.	Males.	Females.	Total.	Rate per 1,000 of Population.
Years.				
0 to 5	6,768	6,737	13,505	105·9
5 to 15	12,125	12,049	24,174	189·6
15 to 20	5,395	7,318	12,713	99·7
20 to 35	14,821	21,200	36,021	282·5
35 to 55	12,245	15,536	27,781	217·8
55 to 75	4,775	6,725	11,500	90·19
75 to 95	620	1,181	1,801	14·1

Chart B

Density of Population. *Showing number of persons per acre in each Metropolitan Borough.*





PART II.

VITAL STATISTICS & INFECTIOUS DISEASES

VITAL STATISTICS.

It is important, when comparing the vital statistics between one or more divisions of a district, or between various boroughs, that due consideration should be given to the varying conditions under which the residents of such divisions or districts live. Density of population, emigration and immigration, social position, wealth or poverty, age and sex distribution, employment or occupation, the existence of hospitals, infirmaries, asylums, &c., receiving patients from outside districts, play an important part in the comparison.

The absence of such information may seriously affect the accuracy of statistical returns. In this Borough the decennial increase in population by immigration was more than 2.5 times the natural increase which accrued by the excess of births over deaths. *In the registration district of Lewisham the increase in population during the intercensal period, 1891-1901, was 41,299, of which number only 11,655 was due to the natural increase of births over deaths.

ESTIMATED POPULATION.

The census returns were obtained on April 1st, 1901, shewing an **enumerated** population of **127,495** persons. All vital statistics should be calculated upon the population of a district **estimated** to be living at the **middle** of **each** year.

The **estimated** number of persons living at all ages within the borough at the middle of the year **1901** amounted to **128,480**, which figure will form the basis of future calculations.

BIRTHS.

The total number of **births** registered in the borough during the year amounted to **3,320**, of which 1,692 were males and 1,628 females.

* The Registration District of Lewisham is not co-terminous with the Borough. This does not, however, seriously alter the value of the comparison.

Table 7.

*Showing Births and Birth Rates for each Division of the Borough,
1901.*

Districts.	Total.	Males.	Females.	Birth Rate per 1,000 persons.
Lee	398	186	212	15·5
Lewisham	1,882	964	918	31·9
Sydenham and Forest Hill	1,040	542	498	23·6
Whole Borough	3,320	1,692	1,628	25·9

The **Birth Rate** of **25.9** per thousand of the population for the **whole district** is below the averages:—29.0 for the whole of London, 29.5 for the 33 great towns and 29.8 for the 67 other large towns.

In the Lewisham division the birth rate was higher than the average for the whole borough, due to a difference in the age of its population compared with Lee and Sydenham.

MORTALITY.

The number of deaths registered within the borough amounted to 1,875.

After deducting the deaths of non-residents (289) dying in public institutions situated within the borough, and adding those of residents (82) who died outside the district, a **corrected total** of **1,668** is obtained, equivalent to an annual death rate of **13 per thousand persons** living at all ages, the **lowest** in London **except** Hampstead, 10·6 (*Vide* Tables 5 and 10), and below that for—

The County of London	...	17·1
England and Wales	...	16·9
33 Great Towns	...	18·6

Age Distribution. Of the total 1,668 deaths:—

426 or 25·5 per cent. occurred in persons under 1 year.

157 or 9·4 „ „ „ between 1 and 5 years.

63 or 3·7 „ „ „ „ 5 „ 15 „

77 or 4·6 „ „ „ „ 15 „ 25 „

512 or 30·7 „ „ „ „ 25 „ 65 „

433 or 25·9 „ „ „ „ 65 and upwards*

Table 8.

Showing number of Deaths and Death Rates in each Division of the Borough, for the year 1901.

Division.	Deaths.	Death-rate per 1,000 of the population in the Division.	Birth-rate per 1,000 of the population in the Division.
Lee 	255	10·0	15·5
Lewisham ...	856	14·5	31·9
Sydenham and Forest Hill ...	557	12·6	23·6

In considering the above table, allowance must be made for the age and sex distribution. The fact that Lewisham shows a birth-rate of double that of Lee will in itself account

for an increased death-rate, owing to the higher mortality general among children under one year of age. The same argument will apply, in a lesser degree, to the Sydenham and Forest Hill Division.

Table 9.

Showing number of Residents and Non-Residents dying in Public Institutions situated in the Borough.

Public Institution.	Deaths of Residents.	Deaths of Non-Residents.	Total
The Park Hospital	25	224	249
Lewisham Infirmary	294	21	315
St. Olave's Workhouse	—	28	28
St. John's Hospital	5	16	21
Totals	324	289	613

DEATHS of Residents belonging to the Borough occurring in Public Institutions &c., in districts outside during the year 1901.

Name of Institution &c.	Sex.	Age.	Cause of Death.
Banstead Asylum	male	40 years	Phthisis
"	female	70 "	Senile Decay
Bethlem Hospital	male	45 "	Brain Disease
Brook Fever Hospital	male	4 "	Diphtheria
"	male	2 "	Scarlet Fever
"	female	4 "	Diphtheria
"	male	31 "	Enteric Fever
"	female	2 "	Scarlet Fever
"	male	18 "	Enteric Fever
"	female	2 "	Diphtheria
"	female	1 "	Diphtheria
"	female	2 "	Scarlet Fever
"	male	9 "	Diphtheria
"	male	19 "	Scarlet Fever
Brompton Hospital	male	23 "	Phthisis
"	female	35 "	Phthisis
Camberwell House Asylum	male	32 "	Phthisis
Cane Hill Asylum	female	41 "	Phthisis
"	male	36 "	Paralysis
"	female	37 "	Phthisis
"	male	31 "	Paralysis
Caterham Asylum	female	54 "	Epilepsy
"	female	24 "	Phthisis
"	male	60 "	Cancer
Children's Hospital, Great Ormond street	male	4 "	Tuberculosis
City of London Asylums, Stone	female	65 "	Senile Decay
Claybury Asylum	male	39 "	Paralysis
"	female	43 "	Brain Disease
"	male	66 "	Chronic Colitis
Darenth Asylum	male	14 "	Meningitis
Evelina Hospital	male	1 "	Bronchitis
"	female	14 "	Tuberculosis
"	male	10 months	Diarrhœa
Friedenheim	female	34 years	Cancer
German Hospital	male	50 "	Diabetes
Great Northern Central Hospital	male	34 "	Nervous Exhaustion
Guy's Hospital	male	18 "	Septicæmia
"	male	25 "	Cerebral Tumour

Guy's Hospital	female	46	„	Blood Poisoning
„	female	21	days	Premature Birth
„	male	52	years	Cerebral Hæmorrhage
„	male	4	„	Meningitis
„	male	43	„	Accident
„	male	42	„	Cancer
„	female	1	„	Intersusception
„	male	1	„	Tuberculosis
„	female	35	„	Tumour
„	female	13	„	Kidney Disease
„	female	66	„	Cancer
„	female	3	„	Meningitis
„	male	64	„	Accident
„	male	68	„	Bronchitis
Kings College Hospital	male	33	„	Dissiminated Sclerosis
„	male	38	„	Kidney Disease
„	male	54	„	Phthisis
„	male	31	„	Heart Disease
Leavesden Asylum	male	70	„	Pneumonia
London County Asylum, Dartford	female	32	„	Brain Disease
„	female	25	„	Heart Disease
„	male	46	„	Paralysis
„	male	37	„	Paralysis
„	female	70	„	Ulcerative Colitis
„	male	41	„	Paralysis
„	female	44	„	Ulcerated Colitis
„	female	32	„	Phthisis
London Hospital	male	28	„	Accident
Manor Asylum, Epsom	female	39	„	Epilepsy
Royal Hospital, Waterloo road	male	1	„	Pneumonia
St. Bartholomew's Hospital	male	77	„	Cancer
„	female	46	„	Cancer
„	female	57	„	Septicæmia
„	male	46	„	Aneurism of Aorta
„	female	45	„	Phthisis
St. George's Hospital	female	46	„	Alcoholism
St. Mary's Hospital	male	39	„	Accident
„	male	2	months	Diarrhœa
St. Thomas' Hospital	male	74	„	Cancer
„	male	9	„	Accident
„	male	17	„	Enteric
„	male	62	„	Cancer
Westminster Hospital	male	65	„	Cirrhosis of Liver
Woolwich Infirmary	male	27	„	Influenza

Relation of Environment and Occupation to Phthisis Mortality.

LEWISHAM.

19 Ringstead road	F	No occupation
9 Algernon road	M	Commercial clerk
108 Howson road	F	No occupation
28 Ladywell park	F	Ditto
30 Ardmere road	M	Journalist
75 Engleheart road	M	General labourer
5 Nelgarde road	F	No occupation
1 Lower Winchester road	M	Driver (Royal Horse Artillery)
11 Thurston road	F	No occupation
320 Brockley road	F	Ditto
30 Faversham road	F	Ditto
27 Lower Winchester road	M	Clerk
40 Medusa road	M	Scholar
60 Glenfarg road	F	No occupation
68 Wisteria road	F	Ditto
37 Sandhurst road	F	Ditto
8 Hazeldon road	M	Editor (Newspaper)
40 Honley road	F	No occupation
138 Laleham road	M	Joiner (Journeyman)
119 Ennersdale road	F	Domestic servant
19 Brownhill road	F	No occupation
150 Ardgowan road	M	Ditto
66 Minard road	F	At home
41 Courthill road	M	Clerk
65 Killearn road	F	No occupation
62 Laleham road	F	Ditto
52 Arngask road	M	Plasterer
85 Engleheart road	F	Domestic servant
Infirmery, Lewisham	M	Carpenter
Infirmery, Lewisham	M	Labourer
17 Jutland road	M	No occupation
Infirmery, Lewisham	F	Domestic servant
1 Regent street	M	Railway porter
2 Avenue cottages	M	Cab driver
83 Brockley grove	M	Ironmongers' assistant
48 Doggett road	M	Hose pipe maker
1 Regent street	M	Labourer
43 Beacon road	F	Teacher

52 Silvermere road	M	Clerk
16 Essex place	F	Scholar
18a Lethbridge road	M	Baker
Grotes place	M	No occupation
80 Mount Pleasant road	M	Baker
30 Holbeach road	F	No occupation
26 Glenfarg road	F	Scholar
64 Laleham road	M	"
68 Bradgate road	F	No occupation
25 Montague avenue	F	"
58 Catford hill	M	Soldier
15 Dermody road	F	No occupation
Lewisham Infirmary	M	Labourer
Lewisham Infirmary	F	Domestic servant
71 Granville park	M	No occupation
57 Howson road	F	Teacher
Lewisham Infirmary	F	No occupation
22 High street	F	Servant
59 Knowles hill crescent	F	No occupation
17 Doggett road	F	"
120 Ennersdale road...	...	F	"

SYDENHAM.

29 Madden road	M	Scholar
46 Russell street	M	Labourer
2 Rojack road	M	Farmer
55 Brockley rise	F	No occupation
21 Dallas road	M	Scholar
7 Shaws cottages	F	No occupation
2a Highfield terrace, Como road...	...	M	Hosiers' assistant
178 Sydenham road	M	Public-house manager
62 Miall road	M	Gas stoker
11 Kinver road	F	Scholar
2 Church view, Como road	M	Bricklayer
4 Montem road	F	Widow
35 Ewart road	M	Bootmaker
Recreation road	M	Scholar
3 Holmshaw road	M	Labourer
11 Hanover street	F	No occupation
75 Silverdale road	M	Telegraphist
Station house, Lwr. Sydenham...	...	F	Drapers' assistant
17 Bradford road	F	No occupation
45 Honor Oak park	M	Hosiers' assistant

51 Miall road	F	No occupation
29 Siddons road	F	Ditto
104 Sydenham road	M	Printers' assistant
Taylor's lane	M	Decorator
54 Kent house road	M	Farmer
7 Perry vale	F	No occupation
131 Devonshire road	M	Draper
47 Dillwyn road	F	No occupation
15 Elderton road	M	Soldier
57a Dartmouth road	F	No occupation
33 Hanover street	M	Hotel porter
205 Sydenham road	M	Greengrocers' assistant
10 Relinque road	M	Labourer
27 Prospect road	M	Labourer
6 Dartmouth road	F	No occupation
Willow walk	M	Blacksmith
22 Russell street	M	Labourer
Fairlawn park	M	Labourer
93 Dalmain road	M	Barman
37 Larkbere road	F	No occupation
253 Sydenham road	M	Grocer
70 Porthcawe road	M	Carman
2 Relinque road	M	Labourer
17 Dallas road	F	No occupation
59 Wells road	M	Carpenter

LEE.

6 Aislibie road	M	Omnibus conductor
12 Taunton road	M	Scholar
89 Burnt Ash road	F	No occupation
76 Burnt Ash road	F	Independent means
49 Effingham road	F	No occupation
6a Lansdown road	F	Teacher
26 Granville road	M	Dentists' assistant
17 Osberton road	F	No occupation
7 Corona road	F	Independent means
18 Belmont hill	F	No occupation
279 High road	M	Coachman
10 Eton grove	M	Commercial clerk
Church street	M	Laundryman
20 Victoria houses	F	Scholar
Belmont hill	M	Gardener
9 Church street	M	Scholar

SEASONAL MORTALITY.

The greatest number of deaths occurred in January, August and December. The least number in February, May and October.

Chart D shows the January and December rise was due to the increased mortality from **Respiratory Diseases** (Pneumonia, Bronchitis and Pleurisy).

The sudden increase in August was mainly due to the advent of **Infantile Diarrhoea** and Enteritis prevalent during August and September. (*Vide Chart D*).

INFANT MORTALITY.

The infantile mortality rate represents the proportion of deaths occurring among children under one year to the total number of births registered in the same period.

The number of infantile deaths was 426 or 25·5 per cent. of the total deaths, equivalent to a mortality of 128 for every thousand births. This rate compares favourably with that of 168 for 33 great Towns and 148 for the County of London. Only four other London Boroughs have a lower rate—Hampstead, 104; St. Marylebone, 107; Stoke Newington, 115; and Holborn, 124. (*Vide Table 10*).

ZYMOTIC DEATH-RATE.

The rate is calculated upon the total number of deaths occurring from the seven principal infectious diseases, viz.:—Small-pox, Scarlet Fever, Measles, Diphtheria, Whooping Cough, Typhus and Enteric Fevers, and Diarrhoea.

This group of diseases was responsible for 209 deaths, or a **Zymotic death-rate** of 1·62 per 1,000, compared with 2·05 for England and Wales and 2·68 for the 33 great Towns. It also compares most favourably with other Metropolitan

Boroughs. (*Vide* Table 5). Deaths and death-rates relating to infectious diseases are set out in Tables 13, 14, 15 and 16, and the influence of season upon the occurrence of Infantile or Zymotic Diarrhœa is demonstrated on Chart D.

PHTHISIS.

One hundred and twenty deaths were recorded, equivalent to a **mortality** of **·93** per 1,000, the second lowest in London; Hampstead being **·91**, and the County of London **1·6** per 1,000. This low rate is highly satisfactory. (*Vide* Table 10).

RESPIRATORY DISEASES.

Under this heading are included Bronchitis, Pneumonia, Pleurisy and other diseases of the respiratory organs, excluding Phthisis. The total number of deaths amounted to 260, or a **death-rate** of **2·0** per thousand.

CANCER.

Under this heading 123 deaths were registered, representing a **death-rate** of **·93** per thousand of the population.

ALCOHOLISM AND CIRRHOSIS OF THE LIVER.

Only 44 deaths were recorded.

SUICIDES AND ACCIDENTS.

Forty-two deaths were registered, of which only two were suicides. (*Vide* Table 13.)

MARRIAGES.

The persons married during the year numbered 670, equal to a marriage rate of **5·2** per thousand of the population, compared with **17·6** for the county of London (1900).

Table 10.

Showing Death Rates calculated per 1,000 persons living at all ages in the administrative County of London, and Metropolitan Boroughs during the 52 weeks of 1901, after distribution of Deaths in Public Institutions.

Boroughs.	All Causes.	Principal Epidemic Diseases.	Small Pox.	Measles.	Scarlet Fever.	Diphtheria.	Whooping Cough.	Typhus.	Enteric.	Simple Continued Fever.	Diarrhoea.	Phthisis.	Deaths under 1 year to 1000 Births Registered
County of London ...	17.1	2.22	0.05	0.43	0.13	0.29	0.35	0.00	0.11	0.00	0.86	1.66	148
Paddington ...	14.3	1.73	—	0.06	0.08	0.32	0.36	—	0.10	—	0.81	1.10	136
Kensington ...	15.2	1.83	0.01	0.43	0.09	0.22	0.35	0.01	0.06	—	0.66	1.37	163
Hammersmith ...	17.0	2.86	0.13	0.42	0.12	0.32	0.71	—	0.14	—	1.02	1.42	168
Fulham ...	15.8	2.81	0.02	0.23	0.14	0.35	0.56	—	0.14	0.01	1.31	1.37	152
Chelsea ...	16.6	1.31	0.01	0.12	0.07	0.12	0.39	—	0.08	—	0.52	1.68	138
City of Westminster	16.0	1.34	0.09	0.32	0.06	0.12	0.26	—	0.11	—	0.38	1.89	135
St. Marylebone ...	16.6	1.65	0.05	0.07	0.14	0.25	0.30	—	0.06	—	0.78	1.89	107
Hampstead ...	10.6	1.02	0.02	0.01	0.05	0.24	0.29	—	0.09	—	0.32	0.91	104
St. Pancras ...	18.3	2.39	0.17	0.29	0.14	0.46	0.37	—	0.13	—	0.83	1.87	154

Islington	16.0	1.97	0.02	0.47	0.09	0.39	0.27	—	0.14	—	0.59	1.51	140
Stoke Newington	13.2	1.28	0.06	0.1 ⁶	0.08	0.27	0.12	—	0.10	—	0.49	1.35	115
Hackney	15.8	2.15	0.02	0.43	0.12	0.44	0.23	—	0.09	—	0.82	1.53	135
Holborn	20.1	2.28	0.51	0.39	0.05	0.25	0.17	—	0.20	—	0.71	2.81	124
Finsbury	21.4	2.78	0.07	0.48	0.18	0.36	0.38	—	0.11	—	1.20	2.19	142
City of London	20.1	1.06	0.08	0.04	0.15	0.30	0.08	—	0.11	—	0.30	2.29	175
Shoreditch	21.9	2.99	0.04	0.63	0.17	0.25	0.51	—	0.08	—	1.31	2.23	197
Bethnal Green	20.3	2.88	0.02	0.68	0.34	0.49	0.29	—	0.15	0.01	0.90	2.16	153
Stepney	20.9	2.54	0.07	0.60	0.14	0.25	0.33	—	0.15	—	1.00	2.09	163
Poplar	20.0	3.04	0.06	0.53	0.08	0.49	0.47	—	0.15	—	1.26	1.79	165
Southwark	21.5	3.02	0.07	0.78	0.26	0.26	0.48	—	0.09	—	1.08	2.51	168
Bermondsey	20.9	2.90	0.11	0.62	0.34	0.28	0.44	—	0.17	—	0.94	1.79	169
Lambeth	17.2	2.15	0.01	0.40	0.13	0.17	0.38	—	0.08	0.01	0.97	1.65	139
Battersea	16.4	2.76	0.01	0.78	0.06	0.12	0.48	—	0.11	—	1.20	1.46	163
Wandsworth	13.4	1.55	0.01	0.28	0.07	0.18	0.27	—	0.07	—	0.67	1.14	132
Camberwell	16.5	2.44	0.03	0.59	0.18	0.43	0.32	—	0.10	—	0.79	1.48	142
Deptford	16.5	2.48	0.01	0.48	0.15	0.34	0.45	0.02	0.09	—	0.94	1.19	146
Greenwich	15.2	2.17	0.03	0.57	0.05	0.23	0.41	—	0.10	—	0.78	1.16	130
Lewisham	13.0	1.62	—	0.22	0.09	0.18	0.21	—	0.10	—	0.80	0.93	123
Woolwich	14.6	1.51	0.01	0.18	0.04	0.17	0.17	—	0.10	—	0.84	1.76	129



Առաջին	14-0	3-01	0-01	0-18	0-01	0-11	0-11	—	0-10	—	0-84	1-10	133
Դեկտեմբեր	13-0	1-03	—	0-33	0-08	0-19	0-37	—	0-10	—	0-80	0-83	133
Նոյեմբեր	12-3	3-12	0-02	0-21	0-02	0-32	0-41	—	0-10	—	0-18	1-10	130
Օկտոբեր	12-2	3-48	0-01	0-42	0-12	0-24	0-42	0-03	0-08	—	0-24	1-13	142
Սեպտեմբեր	10-2	3-44	0-03	0-23	0-18	0-13	0-33	—	0-10	—	0-19	1-18	143
Ավգոստ	13-1	1-22	0-01	0-38	0-01	0-18	0-31	—	0-01	—	0-01	1-11	133
Յուլի	10-1	3-10	0-01	0-18	0-00	0-13	0-18	—	0-11	—	1-30	1-10	103
Յունիս	11-5	3-12	0-01	0-10	0-18	0-11	0-22	—	0-08	0-01	0-01	1-22	130
Մայիս	30-3	3-30	0-11	0-03	0-34	0-32	0-11	—	0-11	—	0-04	1-13	103
Ապրիլ	31-2	3-03	0-11	0-18	0-30	0-50	0-16	—	0-03	—	1-02	3-21	102
Մարտ	30-0	3-01	0-00	0-23	0-02	0-10	0-11	—	0-12	—	1-32	1-13	102
Փետրվար	30-3	3-11	0-01	0-00	0-11	0-32	0-33	—	0-12	—	1-00	3-00	103
Յանվար	30-3	3-02	0-03	0-02	0-24	0-10	0-30	—	0-12	0-01	0-30	3-10	103
Դեկտեմբեր	31-3	3-00	0-01	0-08	0-11	0-32	0-21	—	0-08	—	1-21	3-33	101
Նոյեմբեր	30-1	1-00	0-02	0-04	0-12	0-30	0-08	—	0-11	—	0-30	3-30	112
Օկտոբեր	31-1	3-18	0-01	0-12	0-18	0-30	0-38	—	0-11	—	1-30	3-18	113
Սեպտեմբեր	30-1	3-32	0-11	0-30	0-02	0-32	0-11	—	0-30	—	0-11	3-21	133
Ավգոստ	12-3	3-12	0-03	0-18	0-15	0-17	0-33	—	0-08	—	0-23	1-23	133
Յուլի	13-3	1-30	0-00	0-11	0-08	0-31	0-13	—	0-10	—	0-10	1-31	113
Յունիս	13-3	1-31	0-03	0-11	0-09	0-30	0-31	—	0-11	—	0-33	1-31	110

Showing Percentage of Deaths, in Thirteen Groups, to total registered Deaths, 1901.

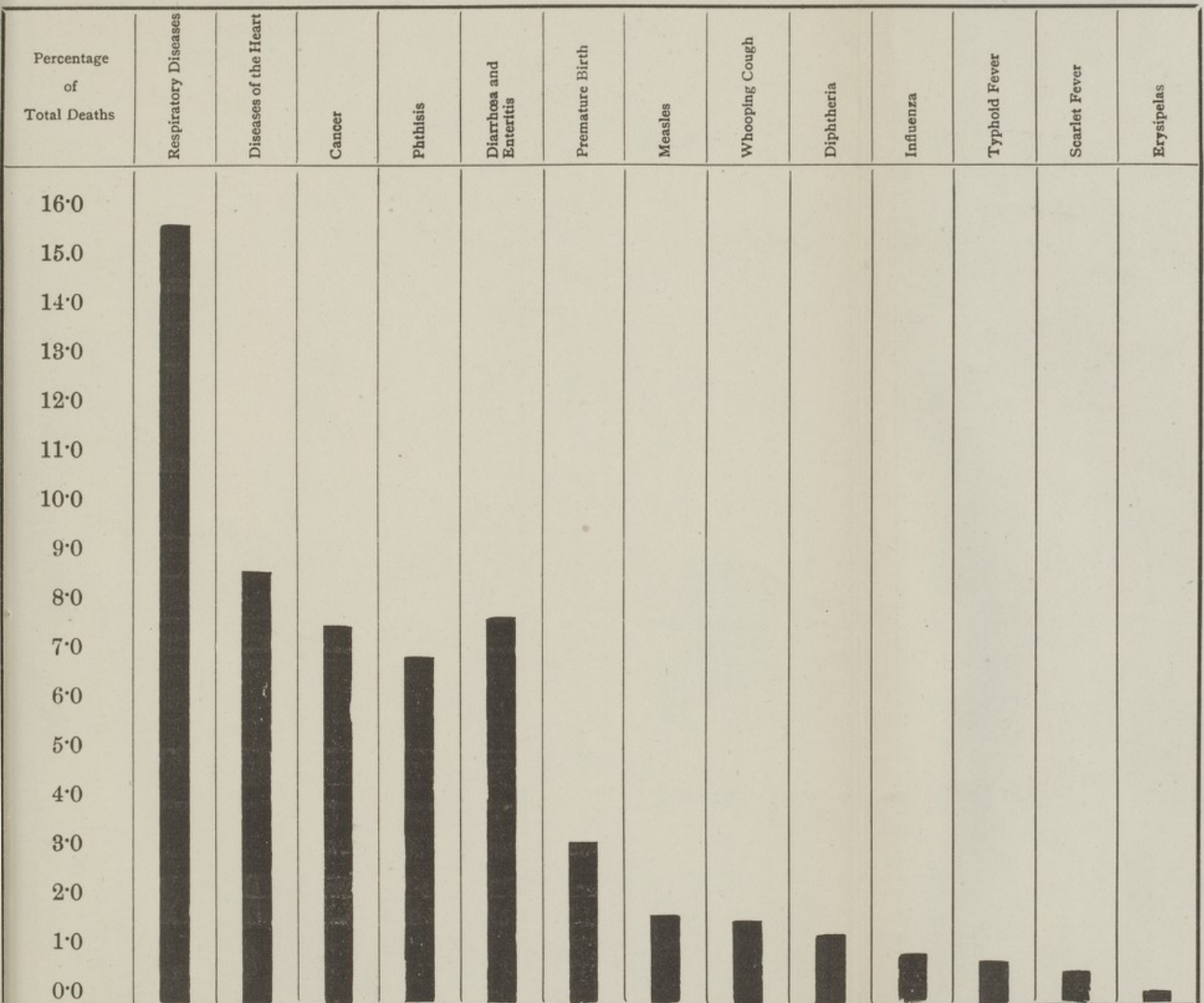
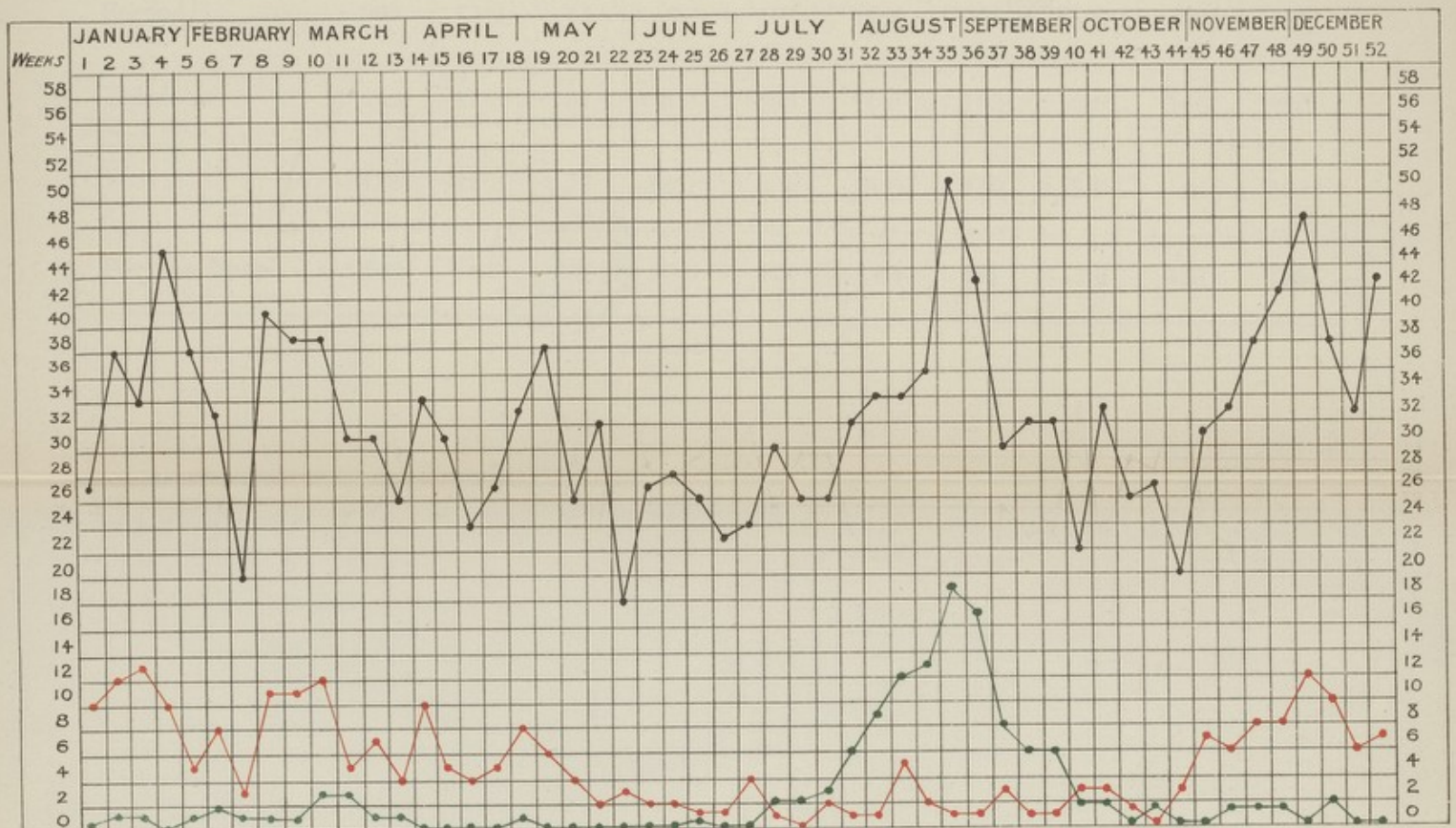




CHART D.

*Showing Weekly Total Deaths from all Causes from Respiratory Diseases
and from Diarrhoea and Enteritis for the 52 Weeks ending December 28th, 1901.*



REFERENCES:

Deaths from All Causes shown in Black.

" " *Respiratory Diseases* " *Red*
 " *Infantile Diarrhoea*
 " *Enteritis* " " *Green*



Table 11.

Showing Quarterly distribution of Death for the whole Borough and its Divisions.

Quarter.	Whole Borough.		Lee.		Lewisham.		Sydenham and Forest Hill.		Infantile Mortality.	
	Deaths.	Death Rate.	Deaths.	Death Rate.	Deaths.	Death Rate.	Deaths.	Death Rate.	Deaths under one year of age.	Death Rate per 1,000 Births.
First ...	443	13·8	77	12·0	226	15·3	140	12·7	108	130
Second...	363	11·2	44	7	191	12·9	128	11·6	68	82
Third ...	429	13·3	57	8·9	233	15·5	139	12·6	166	200
Fourth...	433	13·3	77	12·0	206	13·6	150	13·6	84	101
For the Year ...	1,668	13	255	10·0	856	14·5	557	12·6	426	128

NOTE.—See Table 8.



Table 12.

Showing Meteorological Records at Greenwich, Total Deaths, and Deaths from three groups of Diseases in the Borough of Lewisham for each week of the year, 1901.

No. of Week.	Week ended.		Total Deaths.	Deaths from			Mean Temper- ture of the Air.	Mean of the		Mean Temperature 3 feet below Earth.	Fall of Rain in inches.	Sun above Horizon in hours.	Registered Sunshine in hours.
				Respiratory Diseases.	Notifiable Zymotic Diseases.	Diarrhoea and Enteritis.		Highest Readings of the Ther- mometer.	Lowest Readings of the Ther- mometer.				
1	Jan.	5	27	10	1	—	37·8	41·7	33·1	46·20	0·56	55·1	1·7
2	"	12	38	12	—	1	34·6	39·0	29·3	43·56	0·23	56·5	8·7
3	"	19	35	13	—	1	40·2	45·3	34·1	42·97	0·22	58·3	13·3
4	"	26	46	10	2	—	44·2	49·0	39·3	43·91	0·18	60·3	12·6
5	Feb.	2	38	5	5	1	36·9	41·5	31·8	43·44	0·10	62·9	6·9
6	"	9	33	8	2	2	34·3	38·2	29·6	41·36	0·47	65·6	2·2
7	"	16	20	3	—	1	32·6	37·5	26·7	40·50	0·03	68·6	11·9
8	"	23	41	11	1	1	35·1	39·1	31·7	39·26	0·15	71·6	6·6
9	March	2	39	11	1	1	43·9	49·1	38·7	40·39	0·57	74·8	15·7
10	"	9	41	12	—	3	42·0	48·0	37·1	41·96	0·76	77·9	11·4
11	"	16	31	5	—	3	39·0	44·6	33·7	41·91	0·09	81·3	5·4
12	"	23	31	7	1	1	38·3	43·1	34·2	41·78	0·31	84·6	13·2
13	"	30	26	4	1	1	34·2	41·1	28·4	40·53	0·44	87·7	21·2
14	April	6	34	10	3	—	44·4	53·2	36·1	41·23	0·97	91·0	27·4
15	"	13	31	5	2	—	46·2	54·1	41·0	43·57	0·71	94·0	29·0
16	"	20	24	4	—	—	47·3	56·7	38·2	44·02	0·33	97·3	48·6
17	"	27	27	5	1	—	54·7	66·2	43·3	46·63	0·02	100·1	77·2
18	May	4	33	8	—	1	49·3	61·0	39·0	47·99	0·00	103·3	45·6
19	"	11	38	6	2	—	47·1	55·3	41·2	48·75	1·56	105·9	17·3
20	"	18	26	4	—	—	51·7	62·9	41·4	49·32	0·00	108·7	69·7

21	"	25	32	2	—	—	56.3	66.8	44.8	51.26	0.00	110.8	80.9
22	June	1	18	3	2	—	60.0	71.6	49.0	54.06	0.27	112.8	51.2
23	"	8	27	2	1	—	58.8	69.9	48.6	56.64	0.03	114.5	52.3
24	"	15	28	2	1	—	56.8	67.6	47.0	57.79	0.10	115.4	63.7
25	"	22	26	1	—	1	58.0	67.8	50.1	57.30	0.43	116.0	36.4
26	"	29	23	1	1	—	61.0	71.8	50.9	58.84	0.00	115.9	69.5
27	July	6	24	4	1	—	64.1	73.9	56.1	60.30	1.05	115.2	46.1
28	"	13	30	1	—	2	64.5	77.2	52.2	61.87	0.00	114.1	60.2
29	"	20	26	—	1	2	68.4	81.6	54.4	63.45	0.00	112.5	75.5
30	"	27	26	2	—	3	61.6	71.7	54.5	64.40	1.3	110.4	18.4
31	August	3	32	1	—	6	65.1	75.8	54.9	63.29	0.38	108.0	49.2
32	"	10	34	1	—	9	64.6	76.8	55.3	63.42	0.08	105.5	49.0
33	"	17	34	5	—	12	61.0	72.2	52.1	63.54	0.5	102.6	49.3
34	"	24	36	2	1	13	63.9	76.6	50.5	63.28	0.00	99.7	77.4
35	"	31	51	1	—	19	58.6	68.5	51.5	62.44	1.36	96.7	39.2
36	Sept.	7	43	1	2	17	56.4	65.1	47.8	60.99	0.00	93.6	52.3
37	"	14	30	3	1	8	59.4	68.2	53.5	60.44	0.25	90.5	17.0
38	"	21	32	1	2	6	56.8	65.6	48.9	59.87	1.10	87.3	19.8
39	"	28	32	1	1	6	58.7	68.3	50.5	59.53	0.00	84.1	21.3
40	Oct.	5	22	3	2	2	57.3	67.0	49.3	59.21	1.24	81.0	27.8
41	"	12	33	3	5	2	50.7	57.9	43.6	57.12	0.19	77.6	20.3
42	"	19	26	1	—	—	51.5	59.0	43.9	55.63	1.10	74.5	26.0
43	"	26	27	—	1	1	44.6	53.6	36.4	54.00	0.03	71.3	12.8
44	Nov.	2	20	3	—	—	49.0	55.3	42.6	52.34	0.02	68.4	38.4
45	"	9	31	7	1	—	39.5	46.4	33.8	50.27	0.00	65.3	7.3
46	"	16	33	6	3	1	41.6	45.9	37.6	49.54	0.39	62.7	5.4
47	"	23	38	8	1	1	43.7	48.5	37.7	47.49	0.24	60.4	10.3
48	"	30	42	8	2	1	39.2	44.3	33.7	46.60	0.03	58.1	9.6
49	Dec.	7	48	12	1	—	44.4	48.4	38.6	45.89	0.03	56.4	6.8
50	"	14	38	10	1	2	41.5	45.1	37.0	45.89	1.37	55.1	6.0
51	"	21	33	6	1	—	33.4	38.2	28.5	42.08	0.07	54.6	15.6
52	"	28	43	7	—	—	36.3	41.2	30.2	43.91	1.00	54.6	6.1

Table 13.

Showing causes of, and Ages at, Death during the Year 1901.

Causes of Death.	Deaths in or belonging to whole District at subjoined Ages.							Deaths in or belonging to Localities (at all Ages.)				Total Deaths in Public Institutions in the District.
	Total All ages.	Under 1 year.	1 and under 5.	5 and under 15.	15 and under 25.	25 and under 65.	65 and upwards.	Blackheath and Lewisham.	Sydenham and Forest Hill.	Lee.		
Small-pox	—	—	—	—	—	—	—	—	—	—	—	
Measles	29	8	17	4	—	—	—	14	13	2	6	
Scarlet fever	12	—	6	4	1	1	—	4	6	2	97	
Whooping-cough	28	10	14	3	1	—	—	11	14	3	—	
Diphtheria and mem- branous croup	23	1	16	5	—	1	—	12	4	7	115	
Croup	—	—	—	—	—	—	—	—	—	—	—	
(Typhus	14	—	1	—	5	8	—	9	5	—	27	
Fever (Enteric												
(Other continued												
Epidemic influenza	17	5	—	1	1	3	7	3	12	2	1	
Cholera	—	—	—	—	—	—	—	—	—	—	—	
Plague	—	—	—	—	—	—	—	—	—	—	—	
Diarrhœa	103	95	8	—	—	—	—	64	32	7	11	
Enteritis	28	17	5	—	—	4	2	15	10	3	7	
Puerperal fever	—	—	—	—	—	—	—	—	—	—	—	

Table 13.

Showing causes of, and Ages at, Death during the Year 1901.

Causes of Death.	Deaths in or belonging to whole District at subjoined Ages.							Deaths in or belonging to Localities (at all Ages.)			Total Deaths in Public Institutions in the District.
	Total All ages.	Under 1 year.	1 and under 5.	5 and under 15.	15 and under 25.	25 and under 65.	65 and upwards.	Blackheath and Lewisham.	Sydenham and Forest Hill.	Lee.	
Small-pox ...	—	—	—	—	—	—	—	—	—	—	—
Measles ...	29	8	17	4	—	—	—	14	13	2	6
Scarlet fever ...	12	—	6	4	1	1	—	4	6	2	97
Whooping-cough ...	28	10	14	3	1	—	—	11	14	3	—
Diphtheria and membranous croup ...	23	1	16	5	—	1	—	12	4	7	115
Croup ...	—	—	—	—	—	—	—	—	—	—	—
Fever (Typhus ...	—	—	—	—	—	—	—	—	—	—	—
Enteric ...	14	—	1	—	5	8	—	9	5	—	27
Other continued ...	—	—	—	—	—	—	—	—	—	—	—
Epidemic influenza ...	17	5	—	1	1	3	7	3	12	2	1
Cholera ...	—	—	—	—	—	—	—	—	—	—	—
Plague ...	—	—	—	—	—	—	—	—	—	—	—
Diarrhoea ...	103	95	8	—	—	—	—	64	32	7	11
Enteritis ...	28	17	5	—	—	4	2	15	10	3	7
Erysipelas ...	5	2	—	—	—	1	2	5	—	—	—
Other septic diseases ...	7	—	—	—	—	1	5	1	3	3	3
Phthisis ...	120	2	5	1	23	78	11	55	49	16	36
Other tubercular diseases ...	49	17	12	9	2	7	2	22	18	9	6
Cancer, malignant disease ...	123	—	2	1	2	63	55	49	48	27	24
Bronchitis ...	124	21	11	4	—	27	61	64	45	15	26
Pneumonia ...	119	30	26	5	3	37	18	63	49	17	18
Pleurisy ...	3	—	—	—	—	2	1	2	—	1	1
Other diseases of Respiratory organs ...	14	3	—	—	1	6	4	7	4	3	5
Alcoholism ...	—	—	—	—	—	—	—	—	—	—	—
Cirrhosis of liver ...	44	—	—	—	—	36	8	26	14	4	7
Venereal diseases ...	1	1	—	—	—	—	—	—	1	—	—
Premature birth ...	54	54	—	—	—	—	—	32	17	5	2
Diseases and accidents of parturition ...	13	7	—	—	1	5	—	8	2	3	2
Heart diseases ...	139	5	3	8	9	56	58	74	41	24	45
Accidents ...	40	9	2	2	—	17	10	23	11	6	18
Suicides ...	2	—	—	—	—	1	1	1	1	—	—
All other causes (Apoplexy ...	75	1	—	—	2	22	50	34	29	12	20
Brain diseases ...	41	2	5	1	1	23	9	19	6	6	10
Kidney diseases ...	45	—	—	1	1	26	17	21	18	6	12
All other causes ...	396	136	24	16	18	82	19	214	110	72	113
Total all causes ...	1668	426	157	65	75	512	433	866	557	255	613

Table 14.

Showing Deaths from the principal Zymotic Diseases for the Borough and its Divisions during the year 1901.

Division of the Borough.	Small-pox.	Measles	Scarlet Fever.	Whooping Cough.	Diphtheria.	Typhoid Fever.	Diarrhoeal Diseases.	Total.
Lee ...	—	2	2	3	7	—	7	21
Lewisham ...	—	14	4	11	12	9	64	114
Sydenham and Forest Hill	—	13	6	14	4	5	32	74
The whole Borough	—	29	12	28	23	14	103	209

***Table 15.**

Showing †Death-rates from the principal Zymotic Diseases for the Borough and its Divisions during the year 1901.

Division.	Small-pox.	Measles.	Scarlet Fever.	Whooping Cough.	Diphtheria	Typhoid Fever.	Diarrhoeal Diseases.	Total Zymotic Death-rate.
Lee ...	—	·07	·07	·11	·27	—	·27	·82
Lewisham ...	—	·23	·06	·18	·20	·15	1·08	1·91
Sydenham and Forest Hill	—	·29	·13	·31	·09	·11	·72	1·67
The Whole Borough	—	·22	·09	·21	·18	·10	·80	1·62

* Comparative Rates for other Boroughs will be found in Table 10.

† The Death-rates are per 1000 persons in each Division and in the whole Borough.

Table 16.

*Age distribution of Deaths from Zymotic Diseases occurring in the
Borough during the year 1901.*

Disease.	Ages at Death.					
	All ages.	Under 1 year.	1 and under 5.	5 and under 15.	15 and under 25.	25 and upwards.
Measles ...	29	8	17	4	—	—
Scarlet Fever ...	12	—	6	4	1	1
Whooping Cough	28	10	14	3	1	—
Diphtheria ...	23	1	16	5	—	1
Typhoid Fever ...	14	—	1	—	5	8
Diarrhoeal Diseases ...	103	95	8	—	—	—
Total for the Borough...	209	114	62	16	7	10

ATTACK RATES FROM THE PRINCIPAL INFECTIOUS
DISEASES PER 1,000 OF THE POPULATION FOR
EACH BOROUGH IN LONDON.

Paddington	...	7.72	Shoreditch	...	9.74
Kensington	...	5.8	Bethnal Green	...	12.85
Hammersmith	...	7.23	Stepney	...	9.5
Fulham	...	11.07	Poplar	...	9.56
Chelsea	...	5.33	Southwark	...	11.3
Westminster	...	3.82	Bermondsey	...	12.9
Holborn	...	13.3	Lambeth	...	6.67
Finsbury	...	10.87	Battersea...	...	6.77
City	...	8.30	Wandsworth	...	6.57
St. Marylebone	...	7.5	Camberwell	...	10.7
Hampstead	...	5.87	Deptford	...	10.55
St. Pancras	...	11.23	Greenwich	...	8.34
Islington	...	8.50	Lewisham	7.1
Stoke Newington		7.9	Woolwich	...	5.94
Hackney	...	11.32			

SMALL POX.

During the year, 1,700 cases of Small Pox occurred within the administrative County of London. The first case occurred in January. The person was attacked shortly after arrival from Paris, where the disease was prevalent. In February a sailor was attacked shortly after his arrival home. In May, a lady on her return home from Egypt was notified in Highbury. In June a case was notified in Bethnal Green, and one in Marylebone; the latter, a recent arrival from Paris. In the same month cases occurred in Wandsworth, two of which were due to laundry infection. During the week ending August 24th there were 16 cases. From this date the disease spread, chiefly in the Boroughs north of the Thames.

The Borough of Lewisham enjoyed complete immunity until the 29th September, when the first case occurred. From

this date until the end of the year eleven cases were notified, only six of which were genuine.

Case 1. September the 29th.—H. C., aged 15, of 51 Brownhill Road. In this case the Medical Attendant was good enough to seek my assistance. I was able to confirm his suspicions and the patient was removed. The origin of infection was due to contact with gipsies in Kent. All necessary precautions were taken and no further cases occurred from this source.

Case 2. J. G., male, aged 22, of 62 Devonshire Road, Forest Hill, notified on the 14th of October. The patient had only been a resident in the district for three days, coming from Camberwell. A fortnight before his illness he visited his brother (who was dying) at the Small-Pox Hospitals.

Case 3. December the 12th.—P. B. S., of 120 Sydenham Road, aged 5. I was invited by the Medical Attendant to see this child, who was suffering from severe Confluent Small-pox. The patient had previously lived in Australia. Neither the patient or his brother had ever been vaccinated. The patient was removed and all contacts immediately vaccinated. The family were kept under daily observation by your Medical Officer.

Case 4. On the 17th of December I found C. B., aged 3 (a brother), suffering from modified Small-pox. The patient was removed in the early stage.

The origin of the former case could not be ascertained.

Case 5. December the 23rd.—Ch. J. C., aged 28, stoker employed in Gas Works. Origin untraceable.

Case 6. December the 25th.—E. W., female, aged 28, of 122 Sydenham Road. Source of infection, case at 120. I saw this case with the Medical Attendant. The case was quickly removed and contacts kept under observation.

GENERAL PRECAUTIONS.

The general precautions taken to prevent the spread of Small-Pox were as follows :—

- (a) Circulars were distributed in the district calling attention of the public to the necessity of vaccination or re-vaccination.
- (b) The names and addresses of Public Vaccinators appointed for each district were appended.
- (c) A special circular letter was sent to all tradesmen advising the vaccination or re-vaccination of their staff.
- (d) Personal visits were made to large drapery establishments and arrangements made for the visit of the Public Vaccinator.
- (e) The whole staff of the Health Department was available at any hour, including Sundays, which arrangement permitted the immediate removal of cases and the subsequent disinfection of infected premises.
- (f) The ceilings, walls, floors, skirtings and furniture of all infected premises were sprayed with a solution of Formalin (1 in 80) by the aid of specially constructed force pumps. The walls were subsequently stripped.
- (g) All articles of clothing, bedding and all textile fabrics, such as curtains, carpets, etc., likely to retain infection were removed to the Council's central disinfection station, and submitted to the action of superheated steam in the disinfecting machine.
- (h) Immediate notification of the case was sent to the Public Vaccinator.

- (i) The Health Department kept a fresh supply of calf lymph in stock for the use of Medical Practitioners requiring immediate supplies for the re-vaccination of contacts—an arrangement which frequently secured immediate vaccination of persons exposed to infection.
- (j) All children from infected houses were prevented from attending schools.
- (k) The name of the school attended by children of the house was obtained from the parents, and the head teacher immediately communicated with. In order to guard against inaccurate information in this respect a private circular was despatched daily to the head teacher of all schools in the district giving particulars of cases notified.
- (l) Contacts were kept under observation for sixteen days and employers of persons exposed to infection were informed of the fact.
- (m) Information was sent to Medical Officers of other Districts where any of their residents had been in contact with infected persons in Lewisham. Similar action was taken by Medical Officers of Health with respect to the contact of any resident of Lewisham in outside districts. On the receipt of such information the persons mentioned were advised re-vaccination, and were kept under observation.

The necessity of dealing promptly with the first cases is all important, and I believe the action taken, did, to a great extent prevent the extension of this disease in the district. I desire to express my thanks for the great help and courtesy which I received from the Medical Practitioners of the District.

and to the Sanitary Staff who worked cheerfully and well irrespective of the hour that the emergency demanded their attendance.

The result of the action taken to protect the district will be given in a special report on Small Pox which I hope to place before you after the vacation.

SCARLET FEVER.—Four hundred and fifty-five cases were notified during the year in the whole Borough, only 12, or 2·6 per cent., of which number proved fatal. Of the total cases, 332 were removed to hospital.

DIPHTHERIA.—The notifications were 292, of which 23, or 7·8 per cent., died. One hundred and ninety-four cases were removed to hospital.

TYPHOID FEVER.—Sixty-one cases occurred, 14, or 23 per cent., were fatal. The removals to hospital amounted to 36.

ERYSIPELAS.—Of eighty-eight cases, five were fatal. Ten persons suffering from this disease were removed to hospital.

TYPHUS FEVER.—On the 22nd of October a medical practitioner communicated with the London County Council's expert that he was attending a man, W.K., aged 20, residing in Kneller Road, Brockley, whom he suspected to be suffering from Bubonic Plague. Dr. Shirley Murphy, the County Medical Officer of Health, informed me by telephone that he had arranged to see the case with Dr. James Cantlie, the Council's expert on Plague, and invited me to attend.

After examining the patient we agreed he was suffering from Typhus Fever. I arranged for his immediate removal to hospital.

The man some days previous to his illness had resided in lodgings at Portsmouth, the Medical Officer of which town assisted me in making inquiries. The origin of infection could not be traced.

PUERPERAL FEVER.—Seven cases occurred, none of which were registered as fatal.

PREVALENCE OF SCARLET FEVER AND DIPHTHERIA IN RELATION TO AGE PERIODS IN LONDON.

On examination of the returns of notification for the whole of the County of London, it appears that the age period of ten years and under, are credited with the largest percentage of attacks of Scarlet Fever and Diphtheria.

During the year under review, 18,381 persons were attacked with Scarlet Fever, and 12,156 Diphtheria in the County of London.

Of the Scarlet Fever cases, 5,328 or 28·4 per cent. occurred amongst children between the ages of one and five years, and 6,913 or 30·7 per cent. at ages varying from five to ten years.

Of the Diphtheria cases, 4,438 or 36·5 per cent. were among children between one and five, and 3,832 or 31·6 per cent. between the ages of five and ten years.

The consideration of these figures suggest the advisability of an enquiry as to the necessity of raising the age limit of compulsory school attendance, with a view of reducing the extension of these diseases.

The existing regulations provide that children must commence their school attendance at the age of five years.

Parents are frequently encouraged to send them earlier. If the age period were extended to six years, and children prohibited from attendance under that age, I believe the number of cases of infectious disease prevalent among young children, would be considerably reduced.

The age periods of attacks in Lewisham are shown in Table 17. The effect of School Holidays upon infectious disease notifications is shown in Chart E.

* VACCINATION RETURNS FOR THE YEAR 1902.

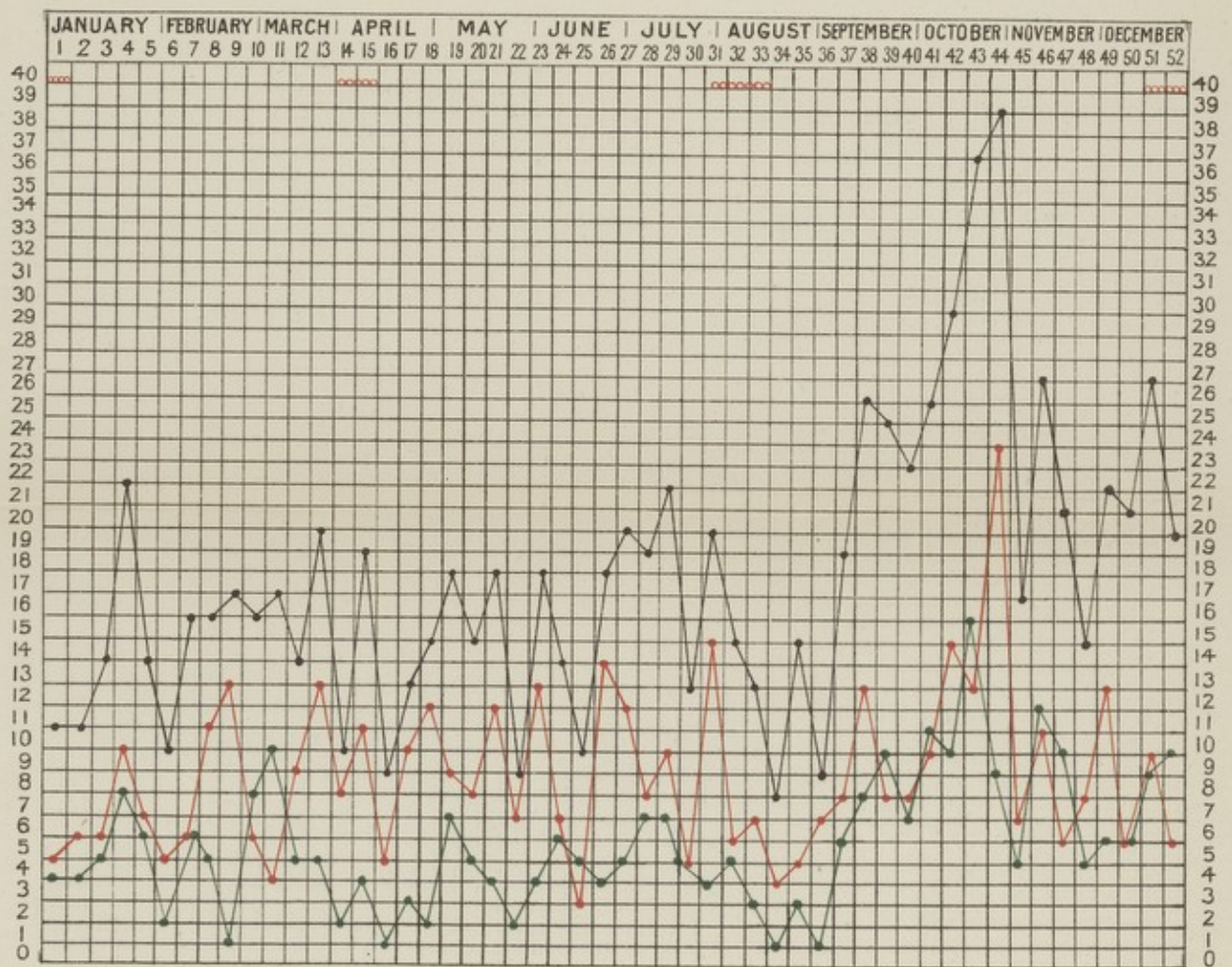
During the year 2,659 primary vaccinations were carried out by the Public Vaccinators:—

1st Quarter	526
2nd Quarter	676
3rd Quarter	607
4th Quarter	850
				—
				2,659
				—
Vaccination postponed on Medical Certificate				396
Infants dying unvaccinated	304
Untraceable	354
Unsuccessful vaccinations	13

* I am indebted to the courtesy of the Lewisham Board of Guardians and Mr. Chas. Atkins for the above figures.

CHART E.

*Showing Weekly Notifications of all Infectious Diseases also Weekly
Notifications of Scarlet Fever & Diphtheria during the Year 1901.*



*School Holidays
shown thus xxx*

REFERENCES.

- Total Notifications shown in Black.*
- Scarlet Fever " " Red*
- Diphtheria " " Green*

Table 17

Showing Cases of Infectious Disease notified during the Year 1901 in the Borough and its divisions.

NOTIFIABLE DISEASE	CASES NOTIFIED IN WHOLE DISTRICT.							TOTAL CASES NOTIFIED IN EACH LOCALITY AT ALL AGES			NO. OF CASES REMOVED TO HOSPITAL FROM EACH LOCALITY		
	At all ages	At Ages—Years						Lee	Lewisham	Sydenham and Forest Hill	Lee	Lewisham	Sydenham and Forest Hill
		Under 1	1 to 5	5 to 15	15 to 25	25 to 65	65 and upwards						
Small-pox	11	—	3	4	4	—	—	1	3	7	—	1	5
Cholera	—	—	—	—	—	—	—	—	—	—	—	—	—
Diphtheria	292	6	78	148	32	28	—	72	177	43	59	109	26
Membranous croup ...	—	—	—	—	—	—	—	—	—	—	—	—	—
Erysipelas	88	7	—	8	12	57	4	11	37	40	1	2	7
Scarlet fever	455	5	99	261	59	31	—	45	263	147	29	188	115
Typhus fever	1	—	—	—	1	—	—	—	1	—	—	1	—
Enteric fever	61	—	2	8	26	25	—	6	34	21	5	21	10
Relapsing fever	—	—	—	—	—	—	—	—	—	—	—	—	—
Continued fever	—	—	—	—	—	—	—	—	—	—	—	—	—
Puerperal fever	7	—	—	—	—	7	—	—	6	1	—	1	—
Plague	—	—	—	—	—	—	—	—	—	—	—	—	—
Totals	915	18	182	429	134	178	4	135	521	259	94	323	163

Table 18.

Number of Cases of Infectious Diseases notified in the several Boroughs and the Administrative

County of London, during the 52 weeks ended 28th December, 1901.

BOROUGH.	Estimated Population in the middle of 1901.	Small-Pox.	Scarlet Fever.	Diphtheria (including Mem- branous Group).	Typhus.	Enteric Fever.	Continued Fever.	Cholera.	Erysipelas.	Puerperal Fever.
Administrative County of London	4,544,983	1,700	18,381	12,156	20	3,194	48	3	4,604	253
Paddington	144,200	21	505	340	—	92	—	—	141	13
Kensington	176,821	14	475	251	2	99	8	—	171	10
Hammersmith	112,631	45	346	226	—	77	2	—	116	3
Fulham	138,448	16	600	644	—	133	1	1	132	7
Chelsea	73,876	5	190	107	—	41	—	—	47	4
Westminster	182,567	100	478	255	—	105	2	—	117	6
St. Marylebone	133,053	79	397	259	—	82	—	—	183	4
Hampstead	82,300	7	218	153	—	50	1	—	48	5

St. Pancras	235,369	256	991	941	—	186	2	—	253	13
Islington	335,441	62	1,290	915	2	281	4	—	287	34
Stoke Newington	51,336	19	172	144	—	26	—	—	41	4
Hackney	219,800	41	933	979	1	193	1	1	326	16
Holborn	59,231	216	259	167	1	39	—	—	89	2
Finsbury	101,266	93	502	297	—	68	1	—	135	5
City of London	26,657	8	110	68	—	21	—	—	13	1
Shoreditch	118,504	18	556	326	—	97	10	—	142	6
Bethnal Green	129,720	32	841	463	1	108	2	—	211	8
Stepney	298,985	161	1,177	845	2	267	—	—	372	16
Poplar	168,898	71	560	619	—	172	—	—	187	6
Southwark	206,306	89	1,301	558	—	135	—	—	241	5
Bermondsey	130,650	107	932	329	1	150	—	—	155	5
Lambeth	302,533	50	1,037	527	—	144	6	1	238	15
Battersea	169,403	53	602	267	—	91	—	—	126	8
Wandsworth	233,985	32	689	478	—	99	1	—	225	14
Camberwell	260,022	54	1,472	867	—	154	1	—	228	19
Deptford	110,632	4	549	427	9	63	2	—	111	2
Greenwich	96,217	11	419	188	—	68	—	—	110	6
Lewisham	128,480	11	455	292	1	61	—	—	88	7
Woolwich	117,652	23	310	217	—	69	1	—	70	8

Table 12											
Молодой	...	111'023	59	810	311	—	08	1	—	10	8
Гемелит	...	132'420	41	420	303	1	01	—	—	28	1
Самый	...	04'311	11	418	182	—	08	—	—	110	0
Роберт	...	110'033	4	240	431	0	08	3	—	111	3
Самый	...	360'033	24	1'123	301	—	124	1	—	350	10
Двадцать	...	332'382	83	080	418	—	08	1	—	352	14
Роберт	...	100'400	22	803	301	—	01	—	—	150	8
Гемелит	...	203'133	20	1'031	321	—	144	10	1	330	12
Роберт	...	120'020	101	333	330	1	120	—	—	120	0
Самый	...	300'300	23	1'201	328	—	120	—	—	241	0
Роберт	...	100'000	11	000	070	—	113	—	—	121	0
Самый	...	300'000	101	1'111	070	3	321	—	—	013	12
Роберт	...	150'150	03	011	100	1	100	3	—	311	0
Самый	...	110'110	12	220	050	—	01	10	—	113	0
Самый	...	00'000	0	110	00	—	31	—	—	19	1
Самый	...	101'300	03	005	301	—	00	1	—	122	2
Роберт	...	20'301	310	320	101	1	00	—	—	00	3
Самый	...	310'000	41	000	010	1	100	1	1	230	10
Самый	...	21'301	10	110	111	—	30	—	—	11	1
Роберт	...	300'111	03	1'300	010	3	001	1	—	001	07
Самый	...	310'000	320	001	010	—	100	3	—	000	10

PART III.

DISINFECTION.

INSPECTIONS OF WORKSHOPS.

HOUSES LET IN LODGINGS.

DISTRICT INSPECTIONS, &C.

DISINFECTION.—During the year, 13,982 articles were disinfected at the Council's Central Station.

SCHOOL CLOSURE.—It was necessary to close one private school in Lewisham, owing to the prevalence of Diphtheria among the scholars.

WELLS.

Analyses were made of Water from the following wells :—

Situation.	Result.	Action.
161 Rushey Green	Polluted	Closed
Nursery, Woodlands	Polluted	Closed
1, 2, 3, 4 Queen's Bench, Rushey Green	Polluted	Closed
93 Hither Green Lane	Polluted	Closed
104, 106, 108 Rushey Green	Polluted	Closed
140, 142, 144, 146 Rushey Green	—	Still in use
17 Ladywell Park	—	Still in use

HOUSE-TO-HOUSE INSPECTIONS were made in the following streets :—

Lewisham Division.	No. of Houses Inspected.	No. of Houses in which Nuisances existed.
Rushey Green	35	31
Comerford Road	75	71
Courthill Road	117	89
Wildfell Road	34	32
Ardmere Road	37	37
Braxfield Road	75	73
Essex Place	27	3
Queen Street	12	nil
Regent Street	9	5
Sparta Street	58	37

Sydenham Division.

Chaplin Street	...	30	...	24
Hindsley Place	...	22	...	17
Kent House Road	...	30	...	23

HOUSES LET IN LODGINGS—REGISTERED IN THE BOROUGH,

To which periodical visits have been made.

5 Rennell Street	55 Ladywell Park
5 Ladywell Park	67 " "
23 " "	1 Ladywell Park Terrace
25 " "	2 " " "
31 " "	7 " " "
39 " "	9 " " "
43 " "	10 " " "
45 " "	62 Ladywell Park
47 " "	64 " "
49 " "	7 Rennell Street
51 " "	13 " "
53 " "	8 " "

LICENSED COWSHEDS.

Lewisham Division.

Beckenham Place
 Bellingham Farm, Southend
 Holloway Farm, Southend
 White House Farm, Southend
 147 Rushey Green
 110 Courthill Road
 Shrofields Farm, Hither Green Lane
 87 Loampit Vale, Lewisham

Sydenham and Forest Hill Division.

110 High Street
 296 Sydenham Road
 82 Wells Road

Lee Division.

Burnt Ash Farm
 Butterfield Dairy, Butterfield Street
 College Farm, 168 Burnt Ash Hill
 Durham Farm, Burnt Ash Lane
 Spicer's Meadow, Claypit Lane

WORKSHOPS.

The following is a list of Workshops upon the Register.

Laundries	80
Milliners	14
Saddlers	5
Upholsterers	5
Joiners	23
Dressmakers	61
Watch-repairers	9
Tailors	16
Boot-repairers	49
Cycle	13
Various	18
Total				290

1901.

SLAUGHTER-HOUSES.

Lewisham Division.

36 High Street, Lewisham
 114 „ „ „
 245 „ „ „

69 Loampit Vale, Lewisham
 12 Montpelier Road, Blackheath
 13 Rushey Green, Catford
 158 Rushey Green, Catford

Sydenham Division.

9 Perry Vale, Forest Hill
 Havelock Street, Forest Hill
 16 Wastdale Road, Forest Hill
 18 High Street, Sydenham
 38 " " "
 94 " " "

Lee Division.

182 High Road, Lee
 187 " " "
 272 " " "
 Mayron Place
 1 Weardale road

1901.

WATER CERTIFICATES

*Granted in accordance with Section 48 of the Public Health
 (London) Act, 1891.*

The following number of certificates were granted:

Lee Division	15
Lewisham...	851
Sydenham and Forest Hill			318

Register of Sanitary Work

For the Year 1901.

Description of Work.	Lewisham Division.				Sydenham and Forest Hill Division.			Lee Division.	Total for Whole Borough.
	Mr. J. F. Charlesworth.	Mr. J. Dalry.	Mr. A. H. Gray.	Total.	Mr. E. T. Pidwell.	Mr. B. A. Knappett.	Total.	Mr. R. White.	
Complaints by Residents...	343	39	126	508	177	152	329	398	1235
Premises inspected ...	702	1177	605	2484	953	639	1592	576	4652
Re-inspections of Works in progress ...	1236	1730	5825	8791	1459	1882	3341	1187	13319
Intimation Notices served ...	248	221	548	1017	234	283	517	299	1833
Statutory Notices ordered ...	276	49	149	474	154	239	393	75	942
Statutory Notices served ...	51	30	51	132	71	63	134	34	300
Premises repaired, cleansed, &c...	128	44	159	331	66	105	171	48	550
Defective Roofs, Stackpipes, &c., remedied ...	92	31	80	203	51	64	115	28	346
Drains reconstructed ...	81	10	250	341	105	83	188	94	623
Drains repaired ...	106	21	91	218	101	66	167	129	514
Drains ventilated ...	49	6	40	95	32	39	71	53	219
Stackpipes, Sinks, Bath-wastes, &c., disconnected from Drains...	122	7	191	320	103	61	164	161	545

Gulley Traps provided ...	184	35	315	534	342	318	660	166	1360
Water Closets reconstructed ...	103	26	284	413	168	192	360	133	906
Water Closets repaired ...	39	60	22	121	36	58	94	78	293
Water Closets supplied with water	117	23	41	181	57	—	57	23	261
Soil Pipes reconstructed ...	73	12	114	199	71	62	133	85	417
Soil Pipes repaired and ventilated	80	119	17	216	54	32	86	98	400
Dustbins provided ...	49	104	83	236	31	87	118	70	424
Water Supply to Houses reinstated	16	4	5	25	15	13	28	9	62
Cisterns repaired, cleansed or covered ...	3	136	90	229	114	55	169	26	424
Water Certificates issued ...	—	851	—	851	318	—	318	15	1184
Premises over-crowded ...	3	—	3	6	1	1	2	—	8
Yards paved ...	122	97	239	458	52	147	199	69	726
Removal of offensive accumulations ...	45	32	20	97	24	34	58	25	180
Dung Vaults erected or repaired...	4	12	5	21	4	4	8	4	33
Animals improperly kept—									
Nuisances abated ...	2	2	7	11	3	8	11	6	28
Lodging Houses registered ...	—	—	24	24	—	—	—	—	24
Bake Houses visited ...	—	36	—	36	—	—	40	13	89
Milk Shops visited ...	—	61	—	61	—	—	42	17	120
Cow Sheds visited ...	8	—	—	8	—	—	3	5	16
Workshops visited ...	—	290	—	290	—	—	—	—	290
Slaughter Houses visited ...	7	—	—	7	—	—	6	5	18
House-to-house inspections ...	—	—	479	479	—	—	82	—	561
Legal proceedings ...	—	—	—	—	—	—	—	1	1

