

## **A report of the South Hornsey Local Board.**

### **Contributors**

South Hornsey (Middlesex, England). Local Board of Health.  
Jackman, Thomas S.H.

### **Publication/Creation**

London : W. Thompson, [1894?]

### **Persistent URL**

<https://wellcomecollection.org/works/xtgt4e8g>

### **License and attribution**

You have permission to make copies of this work under a Creative Commons, Attribution, Non-commercial license.

Non-commercial use includes private study, academic research, teaching, and other activities that are not primarily intended for, or directed towards, commercial advantage or private monetary compensation. See the Legal Code for further information.

Image source should be attributed as specified in the full catalogue record. If no source is given the image should be attributed to Wellcome Collection.



Wellcome Collection  
183 Euston Road  
London NW1 2BE UK  
T +44 (0)20 7611 8722  
E [library@wellcomecollection.org](mailto:library@wellcomecollection.org)  
<https://wellcomecollection.org>

SHORN 1



# A REPORT

OF THE

## SOUTH HORNSEY LOCAL BOARD

Including the Report made to the Board by

**THOMAS S. H. JACKMAN, L.R.C.P.L.**

THE

Medical Officer of Health to the District.

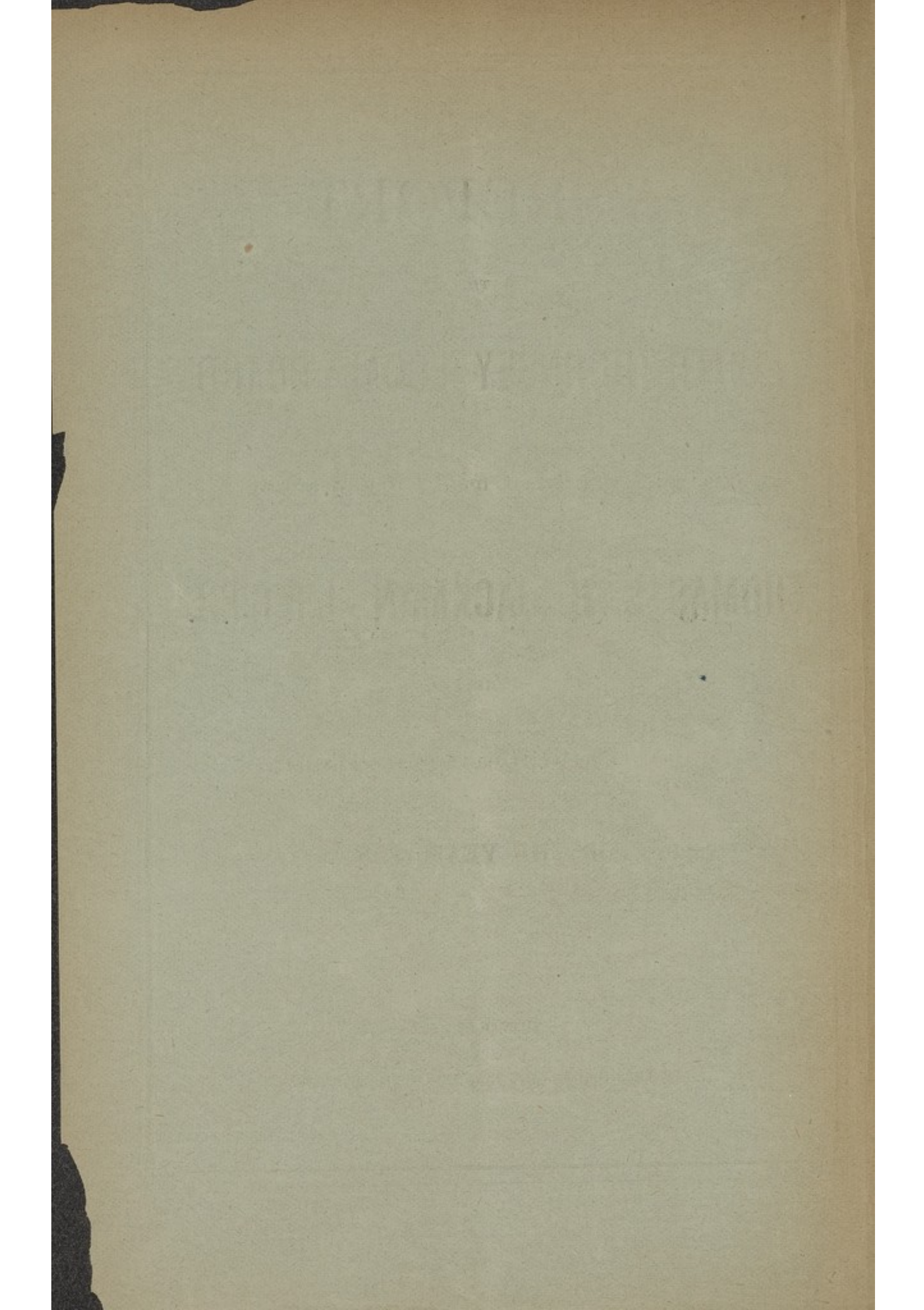
**FOR THE YEAR 1893.**

---

Printed by

W. THOMPSON. ALLEN ROAD, SOUTH HORNSEY.





# A REPORT

OF THE

## SOUTH HORNSEY LOCAL BOARD

Including the Report made to the Board by

**THOMAS S. H. JACKMAN, L.R.C.P.L.**

THE

Medical Officer of Health to the District.

**FOR THE YEAR 1893.**

Printed by

W. THOMPSON, ALLEN ROAD, SOUTH HORNSEY.



## Important Notice.

---

Ratepayers are reminded that Licenses for **Dogs, Guns, Carriages, Armorial Bearings, and Male Servants**, may be taken out at Post Offices; and that under the Local Government Act of 1888, the proceeds belong to the County in which they are paid.

The following is a list of the Post Offices where Ratepayers can obtain the Licenses above mentioned, viz

**279, GREEN LANES. 72, ALLEN ROAD.**

**39, HIGH STREET, STOKE NEWINGTON.**

and your Board hopes that every Ratepayer taking out such Licenses will do so in their own County, so that Middlesex reaps the benefit of the payments.

The Board Room is available for the use of the Ratepayers by the Board's sanction.



## Report for the Year 1893.

---

**EXTENT.**—This District comprises that portion of the Parish of Hornsey, in the County of Middlesex, which lies between the Seven Sisters Road and the High Street, Stoke Newington, having an area of 230 acres. It adopted the Local Government Act and became an Urban Sanitary Authority in the year 1865; in which respect it preceded the remainder of the parish, which did not take this important step until 1867—two years later.

**PARKS AND OPEN SPACES.**—This District is well provided for in the way of open spaces. Clissold Park, of which about 30 acres are situated in South Hornsey, is nearly central, and is of easy access to the whole of the inhabitants. To the acquisition of this Park in 1888, South Hornsey contributed £6,000, of which £5,771 is still owing. Finsbury Park, also in the Parish of Hornsey, although immediately beyond the boundary of the South Hornsey District, is also readily accessible from any portion of the District.

**POPULATION AND RATEABLE VALUE.**—The population of the District, according to the census in 1891, was 16,892, and is now calculated to be 17,150. The density of the population is 74 to the acre; this by comparison with the other Urban Districts in Middlesex, appears to be high, and some have erroneously supposed that as a District, South Hornsey is overcrowded. This is not the case, but it is fully developed, there being no pasture or waste lands. That the District is not densely populated is seen at once by comparison with the adjoining Metropolitan District, Islington, where the density is 102 to the acre. The present rateable value is £90,179.

**GAS SUPPLY.**—The gas used in the District is supplied by the Gas Light and Coke Company. There are 244 public lamps in the District, which were lighted at the cost of £724 5s. 11d. for the twelve months. Gas to private consumers was supplied at the rate of 3s. 1d. per 1000 cubic feet. A new refuge and lamp were fixed at the end of Queen's Road in Green Lanes, and an additional lamp was fixed and put into lighting in Henry Road.

**WATER.**—The water for street watering and house supply, &c., is supplied by the New River Company; the amount used for the first purpose during the past year (1893), was 4,172,000 gallons, which, at 8½d. the 1,000 gallons, cost £166, against 3,491,000



gallons used in 1892, and 2,657,000 gallons used in 1891. The water is supplied to private consumers according to assessment.

**DRAINAGE.**—The District is drained into the Metropolitan system, for which £1,129 6s. 10d. was paid to the London County Council during the year, which is a *pro rata* contribution based upon the assessments of the contributory authorities, including the Metropolitan Vestries of London, the Local Boards for the Districts of South Hornsey, Hornsey, Beckenham, Tottenham, &c.

**FIRE BRIGADE.**—During 1893 the Fire Brigade received 65 calls to fires as follows—

Chimney Fires	...	...	...	20
House Fires in District	...	...	...	9
" out of "	...	...	...	15
False Alarms	...	...	...	21
				—
				65
				—

The amount paid in wages for night firemen at the fire stations in Milton and Somerfield Roads was £145, and for repairs, maintenance, etc., £69, making a total of £214, not including the horsing of the engine; of this amount £33 was recovered.

**MATERIALS.**—The following road materials were used during the last financial year—

	MAIN ROADS.	OTHER ROADS.
Granite	140	81
Flints	—	651
Hoggin	56	173

The Granite is supplied by contract at 16s. 6d. per cubic yard, the Flints at 7s. 6d., and the Hoggin at 5s. 9d. The High Street was channelled at a cost of £102.

**DUSTING.**—The dust and house refuse is removed by contract at an annual cost of £575. A system of weekly removal of the dust from houses is gradually being extended, so as, if possible, to include the whole District. In order to secure prompt removal of dust, particular attention should be given to page 16. The requests for removal received during the year numbered 997, as against 1,024 in 1892, and 1,833 in 1891, thus shewing a gradual improvement.

**SANITARY WORK.**—In order to enforce the notices issued by the Board to abate nuisances, five summonses were issued; in three cases the summonses were afterwards withdrawn, the work being done previous to the day of hearing, and the costs paid; in one case the



house was ordered by the Magistrate to be closed; in the other case a fine of £1 2s. 6d. was inflicted. As will be seen from the table on page 13, a large amount of Sanitary Work has been carried out, including the periodical inspection of the Bake Houses, Slaughter Houses and Private Schools.

**INFECTIOUS DISEASE.**—During last year the negotiations for a joint Infectious Hospital with Enfield were abandoned, the terms submitted to this Board for acceptance having been withdrawn by the Enfield Local Board. Every effort has since been made to secure a suitable site, and at the present time there is good reason to believe that in the near future, the District will be well provided for in this respect. During the year £172 was spent in isolating cases of infectious disease, fumigating rooms, clothing, etc.

**HEALTH.**—Considering that South Hornsey is the most densely populated Urban Sanitary District in Middlesex (being 74 to the acre, the next being Tottenham with 23·7 to the acre) it can claim to be a very healthy district; the death rate according to the last comparative statement, being seventh from the lowest of the 25 Urban Sanitary Districts in Middlesex, most of which are rural or semi-rural in character.

**TEMPERATURE.**—The exceptional heat and drought of 1893 caused the items for watering, and paving to be excessive, the latter, owing to the irregular shrinkage of the ground. This also affected the house walls—the 27 notices having reference to dangerous structures, being chiefly from this cause.

**PROPOSED ANNEXATION.**—On the 16th May, 1893, the London County Council made a representation to the Local Government Board, that it would be advantageous that a portion of the Parish of Hornsey, including the whole District of South Hornsey, should be annexed to the County of London. Your Board, however, on considering the matter, came to the conclusion that the advantages of the proposed annexation would not benefit South Hornsey, and unanimously passed a resolution protesting against the proposal, appointing a Committee to resist the same. This view was endorsed by the Ratepayers themselves, first through a deputation which attended one of the meetings of the Board, and secondly by a petition, which, in a very limited space of time, was signed by 1585 Ratepayers. In the event, the London County Council withdrew their petition, but not until every preparation had been made to oppose their interference with this District.



## Report of the Medical Officer.

*To the South Hornsey Local Board of Health.*

GENTLEMEN,—

The population at the present time of South Hornsey is 17,150; and the number of deaths registered as having taken place in the district during the past year was 226, consisting of 103 males and 123 females, this is equal to a death rate of 13·1 per 1000 persons living; it is somewhat larger than the previous year, when the deaths were 214 and the death rate 12·5. In London the death rate was 21·3 and in the outer ring 15·4.

The births during the same period were 407—viz: 209 males and 198 females, there were 18 more births than in the previous year. The birth rate was 23·7, in London it was 31·0 and in the outer ring 29·6.

The Zymotic class of diseases was the cause of 50 deaths. Of these 9 were from Diarrhœa, 9 Diphtheria, 3 Scarlet Fever, 2 Whooping Cough, 2 Measles, 2 Croup, and 1 from each of the following viz., Influenza, Fever and Erysipelas. The Zymotic death rate was 1·8 per 1000. In London it was 3·08 and in the outer ring 2·5. The Zymotic death rate was less than the preceeding year when it was 2·7.

Eight deaths occurred from the Zymotic class of diseases during the last quarter of the year, 2 were from Scarlet Fever, 2 Measles, 2 Diphtheria and 1 from Fever and Influenza.

Sixty-three persons died during the year aged 60 years and upwards. It is about the average for many years.

The number of deaths of infants under one year of age was 56 and the infantile mortality rate was 137 per 1000 births or 3·26 per 1000 persons living.

The number of cases of Infectious Diseases notified during the year was 256, viz: 158 from Scarlet Fever, 65 Diphtheria, 20 Erysipelas, 7 Fever, 4 Membranous Croup, and 2 Small Pox. These cases were all visited and inquired into by your Sanitary Inspector and, when considered necessary, were also visited by your Medical Officer of Health, and all precautions taken to prevent them spreading, and any sanitary defects discovered were remedied.

On referring to Table No. 8, will be seen the amount of Sanitary work done during the year. 150 premises were cleansed and disinfected, and the number of houses inspected were 480.

It is with pleasure that I am able to point out the highly satisfactory state of your District, the death rate still continues to be one of the lowest in or around London, and that, although it is the most densely populated District in the County.

I am, Gentlemen,

Yours faithfully,

THOS. S. H. JACKMAN.

June, 1894.

TABLE 1.

*Table of the Number of Deaths and Births in the different  
Months and Quarters*

Registered in the District of South Hornsey during the years 1893 and 1892

FOR THE YEAR 1893.						FOR THE YEAR 1892.							
DEATHS.					BIRTHS.		DEATHS.					BIRTHS.	
	In each Month.	In each Quarter.	Average number per year out of every 1,000 persons living for each Quarter.	Average number for the year out of every 1,000 persons living.	In each Month.	In each Quarter.	In each Month.	In each Quarter.	Average number out of every 1,000 persons for each Quarter.	Average number for the year out of every 1,000 persons.	Number in each Month.	Number in each Quarter.	
January .....	13	51	11.8	13.1	28	85	31	69	16.2	12.5	23	95	
February.....	18				27		17				29		
March .....	20				30		21				13		
April .....	13	40	9.3	13.1	33	107	21	46	10.8	12.5	26	110	
May .....	13				28		16				51		
June .....	14				46		9				33		
July.....	18	49	11.4	13.1	32	104	14	49	11.5	12.5	32	101	
August .....	17				29		13				26		
September .....	14				43		22				43		
October .....	16	86	20.0	13.1	26	111	12	50	11.7	12.5	18	83	
November .. ..	31				53		17				29		
December .....	39				32		21				36		
		226			407		214				389		



TABLE 2.

*Deaths from Zymotic Diseases in the year 1893.*

		Erysipelas.	Scarlet Fever	Influenza.	Diphtheria	Croup.	Whooping Cough	Measles	Fever	Diarrhoea	Total	Percentage of Deaths	To every 1000 Persons
First Quarter	...	1	1	..	1	1	..	..	..	..	4	..	..
Second Quarter	...	..	..	..	3	1	..	..	..	3	7	..	..
Third Quarter	...	..	..	..	3	..	2	..	..	6	11	..	..
Fourth Quarter	...	..	2	1	2	..	..	2	1	..	8	..	..
		1	3	1	9	2	2	2	1	9	30	13.7	1.8
1892		2	1	7	1	4	8	15	4	5	47	21.9	2.7

TABLE 3.

*Table of Births and Deaths of Infants and Persons of 60 years of age and upwards from 1873 to 1893.*

	Number of Births.	Number of Births to every 1000 persons	DEATHS OF INFANTS.			Deaths of Persons of 60 years of age and upwards.	Per cent. of Deaths of Persons of 60 years of age and upwards to the Deaths at all ages out of every 1000 persons living	The Number of Deaths from all causes and ages.
			Of one year of age and under	To every 1000 persons living	Per cent. of Deaths to registered Births			
1893	407	23.7	60	3.4	14.7	63	27.8	226
1892	389	22.8	74	4.4	19.0	64	29.9	214
1891	416	24.6	57	3.3	12.4	72	32.0	223
1890	396	22.1	61	3.5	15.4	57	27.9	204
1889	411	23.8	57	3.3	14.3	60	28.5	210
1888	411	24.1	42	2.4	10.2	55	18.0	194
1887	428	25.4	57	3.3	10.9	44	22.4	196
1886	417	25.2	60	3.6	14.3	70	28.8	243
1885	455	27.7	53	3.2	11.4	48	20.6	232
1884	424	26.1	53	3.2	12.5	43	20.4	210
1883	434	27.4	51	3.2	11.7	39	20.6	189
1882	451	29.4	63	4.1	13.9	55	22.9	240
1881	470	31.6	62	4.1	13.1	44	18.6	236
1880	465	32.5	67	4.7	14.4	42	21.4	196
1879	448	30.8	69	4.9	15.4	45	21.5	209
1878	529	39.1	91	6.7	17.2	46	20.3	226
1877	473	38.6	86	7.0	18.1	34	15.8	215
1876	465	42.2	69	6.2	14.6	42	20.4	205
1875	437	43.7	51	5.1	11.6	27	15.6	173
1874	393	41.3	60	6.3	15.2	25	14.7	178
1873	331	38.9	41	4.8	12.3	38	25.6	149



TABLE 4.

*Table of Deaths in different Roads.*

Registered in South Hornsey District during the year 1893.

NAMES OF ROADS.			Old Age	Phthisis	Bronchitis	Pneumonia	Heart Disease	Cancer	Convulsions	Diarrhoea	Scarlet Fever	Diphtheria	Croup	Fever	Measles	Rheumatic Fever	Whooping Cough	Other Diseases	Total
Albion ...	...	...	...	...	...	...	...	...	...	...	...	...	...	...	...	...	...	1	1
Arthur ...	...	...	...	2	...	1	1	...	1	...	...	...	...	...	...	...	...	2	7
Allen ...	...	...	...	...	1	1	1	...	1	1	...	2	...	...	...	...	...	4	11
Brighton ...	...	...	3	1	3	...	2	...	1	...	...	...	...	...	...	...	...	5	15
Cowper ...	...	...	...	...	2	...	...	1	...	2	...	...	...	...	...	...	1	10	16
Gainsboro' ...	...	...	...	...	1	...	...	...	1	...	...	...	...	...	...	...	...	1	3
Gordon ...	...	...	1	1	...	1	...	...	1	1	...	...	...	...	...	...	...	...	5
Green Lanes ...	...	...	...	...	1	...	...	...	...	...	...	...	...	...	...	...	...	...	1
Hamilton Place ...	...	...	...	...	1	...	...	1	...	...	...	...	...	...	...	...	...	2	2
High Street ...	...	...	...	1	...	...	...	...	...	...	...	...	...	...	...	...	...	2	3
Howard ...	...	...	1	...	...	...	1	...	...	...	...	...	...	...	...	...	...	6	8
St. Matthias ...	...	...	1	...	...	2	...	...	...	...	2	...	...	...	...	...	...	1	6
Milton ...	...	...	1	1	...	2	...	...	...	...	...	4	1	...	...	...	2	11	2
Nevill ...	...	...	...	...	1	...	...	...	...	...	1	...	...	...	...	...	...	2	2
Paradise Row ...	...	...	...	...	...	...	...	...	...	...	...	...	...	...	...	...	...	2	2
Philp Street ...	...	...	...	...	...	...	1	...	...	1	...	...	...	...	1	...	...	...	3
Shakespeare ...	...	...	...	1	3	3	...	...	2	...	...	...	...	...	2	...	...	3	14
Shipway Terrace ...	...	...	...	...	...	...	...	...	1	...	...	...	...	...	...	...	...	2	3
Spenser ...	...	...	...	...	2	2	1	...	1	2	...	...	1	...	...	...	...	7	16
Walford ...	...	...	...	1	1	3	...	1	...	...	...	1	...	...	...	...	...	7	14
Warwick ...	...	...	...	...	...	1	...	...	...	...	...	...	...	...	...	...	...	2	3
Watson Street ...	...	...	...	...	...	1	...	...	1	...	...	...	...	...	...	...	...	...	2
Wordsworth ...	...	...	...	...	...	...	...	...	1	...	...	...	...	...	...	...	...	...	1
Victoria Grove ...	...	...	1	...	...	...	1	...	...	...	...	...	...	...	...	...	...	6	8
" " West ...	...	...	1	...	1	...	...	...	...	1	...	...	...	...	...	...	...	1	4
Victoria ...	...	...	...	1	...	1	...	...	...	1	...	...	...	...	...	...	...	2	5
Adolphus ...	...	...	...	1	...	...	...	...	...	...	...	...	...	...	...	...	...	2	3
Alexandra ...	...	...	...	1	...	...	...	1	...	...	...	...	...	...	...	...	...	1	3
Blackstock ...	...	...	...	...	1	1	...	...	1	...	...	...	...	...	...	...	...	4	7
Brownswood ...	...	...	...	1	1	1	...	1	...	...	...	...	...	...	...	...	...	...	4
" Park ...	...	...	...	1	...	...	...	...	...	...	...	...	...	...	...	...	...	...	1
Digby ...	...	...	...	...	...	1	...	...	...	...	...	...	...	...	...	...	...	1	2
Finsbury Park ...	...	...	2	...	3	...	2	1	...	...	...	...	...	...	...	...	...	1	9
Gloucester ...	...	...	...	...	...	...	...	...	...	...	...	...	...	...	...	...	...	2	2
Henry ...	...	...	...	...	...	...	...	...	...	...	...	1	...	...	...	...	...	...	1
Kings ...	...	...	...	1	1	...	...	...	...	...	...	...	...	...	...	...	...	...	2
Mountgrove ...	...	...	...	2	...	...	...	...	...	...	...	...	...	...	...	...	1	...	3
Portland ...	...	...	...	...	...	1	...	...	...	...	...	...	...	1	...	...	...	1	3
Princess ...	...	...	1	...	...	...	...	...	...	...	...	...	...	...	...	...	...	...	1
Queen's ...	...	...	...	2	...	...	1	...	...	...	...	1	...	...	...	...	...	4	8
Seven Sisters ...	...	...	...	1	...	...	1	...	...	...	...	...	...	...	...	...	...	3	5
Wilberforce ...	...	...	2	...	...	...	1	...	...	...	...	...	...	...	...	...	...	3	6
Total ...	...	...	16	17	23	22	13	6	12	9	3	9	2	1	2	1	2	88	216



TABLE 5.

*Deaths registered at several groups of ages from different causes during the year 1893.*

CAUSES OF DEATH.					Under 1 year	1 to 5 years	5 to 10 years	10 to 20 years	20 to 30 years	30 to 40 years	40 to 50 years	50 to 60 years	Above 60 years	Total
Atrophy	..	..	..	..	13	..	..	..	..	..	..	..	..	13
Apoplexy	...	...	...	...	..	..	..	..	..	..	1	1	5	7
Aneurism	...	...	...	...	..	..	..	..	..	..	1	..	..	1
Asphyxia	...	...	...	...	1	1	..	..	..	..	..	..	..	2
Asthenia	...	...	...	...	2	..	..	..	..	..	..	..	1	3
Bronchitis	...	...	...	...	3	6	..	..	1	1	1	2	9	23
Broncho-Pneumonia	...	...	...	...	3	3	..	..	1	..	..	..	3	10
Pluro-Pneumonia	...	...	...	...	..	..	..	..	..	..	..	1	1	2
Pneumonia	...	..	..	..	2	6	..	2	3	1	2	3	3	22
Pleurisy	...	...	...	...	..	1	..	..	..	..	..	..	1	2
Phthisis	...	...	...	...	..	1	1	3	4	2	1	2	3	17
Heart Disease	...	...	...	...	..	..	..	..	..	2	2	3	6	13
Pericarditis	...	...	...	..	1	..	..	..	..	..	..	..	..	1
Agina Pectoris	...	...	...	...	..	..	..	..	..	..	..	..	1	1
Cyanosis	..	...	...	...	1	..	..	..	..	..	..	..	..	1
Cancer	...	...	...	...	..	..	..	..	..	..	2	1	3	6
Coma	...	...	...	...	..	..	..	..	..	..	..	1	..	1
Convulsions	...	...	...	...	11	1	..	..	..	..	..	..	..	12
Chorea (acute)	..	...	...	...	..	..	..	..	..	..	..	..	1	1
Cirrhosis	...	...	...	...	..	..	..	..	..	..	1	1	1	3
Congestion of Lungs	...	..	..	..	1	..	..	..	1	..	..	..	..	2
Brain Disease	...	...	...	...	..	..	..	..	..	1	..	2	..	3
Bright's Disease	...	...	...	...	..	..	..	1	..	..	1	1	1	4
Urcamia	...	...	...	...	..	..	..	..	..	..	..	..	2	2
Nephritis	...	...	...	...	..	..	..	..	..	..	..	..	2	2
Diabetes	...	...	...	...	..	..	..	..	..	..	2	..	..	2
Diarrhoea	...	...	...	...	8	1	..	..	..	..	..	..	..	9
Drowning	...	...	...	...	..	..	..	..	..	..	2	..	..	2
Epilepsy	...	..	...	...	..	..	..	..	..	1	..	..	..	1
Gastrodynia	...	..	...	...	..	..	..	..	..	..	..	..	1	1
Fœmaplegia	...	...	..	...	..	..	..	..	..	..	..	..	1	1
Paralysis	...	...	...	...	..	..	..	..	..	..	..	..	1	1
Locomota Ataxia	...	...	...	...	..	..	..	..	..	..	..	1	..	1
Intestinal Obstruction	...	...	...	...	..	..	..	..	..	..	1	..	..	1
Old Age	...	...	...	...	..	..	..	..	..	..	..	..	16	16
Parturition	...	..	...	...	..	..	..	..	..	..	1	..	..	1
Peritonitis	...	...	...	...	..	1	..	..	1	1	..	..	..	3
Premature Birth	...	...	...	..	5	..	..	..	..	..	..	..	..	5
Raynaud's Disease	...	...	...	...	..	..	..	..	..	..	..	..	1	1
Typhlitis	...	...	...	...	..	..	..	..	..	..	..	..	1	1
Tubercular Meningitis	...	...	...	...	2	..	..	1	..	..	..	..	..	3
Tabes Mesenterica	...	...	...	...	..	1	..	..	..	..	..	..	..	1
Rheumatic Fever	...	...	...	...	..	1	..	..	..	..	..	..	..	1
Diphtheria	...	...	...	...	1	2	4	2	..	..	..	..	..	9
Erysipelas	...	...	...	...	..	..	..	..	..	..	..	..	1	1
Influenza	..	...	...	...	..	1	..	..	..	..	..	..	..	1
Measles	...	...	...	...	1	..	1	..	..	..	..	..	..	2
Croup	...	...	...	...	..	2	..	..	..	..	..	..	..	2
Scarlet Fever	...	...	...	...	..	2	..	..	1	..	..	..	..	3
Typhoid Fever	...	...	...	...	..	..	..	1	..	..	..	..	..	1
Whooping Cough	...	...	...	...	1	1	..	..	..	..	..	..	..	2
					56	31	6	10	12	9	18	19	65	226

TABLE 6.

*Number of Cases of Infectious Disease notified during  
the year 1893.*

MONTH	Scarlet Fever	Typhoid Fever	Enteric Fever	Small Pox	Diphtheria	Membranous Croup	Erysipelas	Total	
January ...	18		1		1	1	1	22	
February ..	14				1	1		16	
March ...	12				4		1	17	Total Quarter 55
April ...	7				2		3	12	
May ...	12				5	1	1	19	
June ...	12				12		1	25	Total Quarter 56
July ..	21	3	1		14		2	41	
August ...	13				8		2	23	
September ...	23				5		1	29	Total Quarter 93
October ...	14	2			10		1	27	
November ...	5			1	1	1	6	14	
December ..	7			1	2		1	11	Total Quarter 52
	158	5	2	2	65	4	20	256	Year's Total.

TABLE 7.

*Cases of Infectious Disease removed to Hospitals for the  
year 1893.*

Scarlet Fever	...	..	..	...	..	..	..	...	..	4
Typhoid Fever	..	..	...	...	...	...	...	...	...	2
Membranous Croup	...	..	..	..	...	...	...	...	...	1
Diphtheria	...	...	..	...	..	...	...	...	...	1
Small Pox	..	...	...	...	...	..	...	...	...	2



# RATES LEVIED UPON THE DISTRICT DURING THE LAST TEN YEARS.

LOCAL BOARD RATES.				POOR RATES.		TOTAL ANNUAL RATE.	
DATES.				General District Rate.	Main Drainage Rate.	TOTAL LOCAL RATES.	
						s. d.	s. d.
1884.	...	...	...	d.	d.	s. d.	s. d.
April	...	...	...	10	...	10	1 2
October	...	...	...	9	1	10	1 1
1885.	...	...	...	7	2	9	1 3
April	...	...	...	9	1	10	1 1
October	...	...	...	8	2	10	1 3
1886.	...	...	...	8	2	10	1 1
April	...	...	...	8	2	10	1 1
October	...	...	...	8	2	10	1 1
1887.	...	...	...	8	2	10	1 3
April	...	...	...	7	2	9	1 1
October	...	...	...	7	2	9	1 1
1888.	...	...	...	7	2	9	1 2
April	...	...	...	7	2	9	1 2
October	...	...	...	7	2	9	1 2
1889.	...	...	...	7	2	9	1 2
April	...	...	...	8	1	9	1 0
October	...	...	...	8	1	9	1 0
1890.	...	...	...	6	2	8	1 2
April	...	...	...	8	2	10	1 5
October	...	...	...	8	2	10	1 5
1891.	...	...	...	7	1	8	1 0
April	...	...	...	8	2	10	1 0
October	...	...	...	8	2	10	1 0
1892.	...	...	...	8	2	10	1 3
April	...	...	...	9	2	11	1 1
October	...	...	...	9	2	11	1 1
1893.	...	...	...	9	2	11	1 5
April	...	...	...	9	2	11	1 3
October	...	...	...	9	2	11	1 3

Annual Average ... 3s. 11 $\frac{1}{4}$ d.

TABLE 8.

# Sanitary and other Works

Carried out during the year 1893.

## SANITARY DEFECTS REMOVED.

Pipes disconnected from the drains and refixed so as to discharge in the open air :—							
Do.	Do.	Sink pipes	..	...	...	...	92
Do.	Do.	Stack do ...	...	...	...	...	114
Do.	Do.	Lavatory and Bath	...	...	...	...	18
Dirty and insanitary premises cleansed, whitewashed, disinfected and put in a habitable state ...							
Cisterns cleaned out and repaired	...	...	...	...	...	...	150
Bell traps removed ...	...	...	...	...	...	...	54
Dilapidations to roofs and buildings	...	...	...	...	...	...	112
Offensive accumulations, &c.	...	...	...	...	...	...	7
Drains unstopped and put in working order	...	...	...	...	...	...	10
Dangerous structures dealt with ...	...	...	...	...	...	...	56
Smoke nuisances ...	...	...	...	...	...	...	27
Cesspools abolished	...	...	...	...	...	...	3
Offensive or broken water closet pans	...	...	...	...	...	...	2
Defective drain pipes	...	...	...	...	...	...	106
Overcrowding stopped	...	...	...	...	...	...	96
Animals kept to be a nuisance	...	...	...	...	...	...	20
Soil Pipes to be taken outside the house	...	...	...	...	...	...	1
							50

## SANITARY APPLIANCES PROVIDED.

Number of houses in which Dust bins were repaired or new ones provided...	106
Gully traps provided	336
Ventilating pipes provided	147
W.C.'s and apparatus overhauled and repaired...	75
Stack pipes and guttering repaired	8
Water supply fittings overhauled and repaired ...	14
Premises in which the yards, &c. were newly paved, or paving relaid	23

## GENERAL STATISTICS.

Number of personal notices given	59
„ statutory notices served	293
„ letters and circulars sent out ...	1100
„ summonses before Magistrates	5
„ closing orders granted ...	1
Number of houses inspected	480
„ „ in which infectious diseases appeared	177
„ „ Cowsheds and Dairies inspected ...	15
„ „ Slaughter-houses	4
„ „ Greengrocers', Fishmongers', &c. yards inspected	20
„ „ Bakehouses, &c.	10
„ „ Private Schools	13
„ Shops licensed for the sale of Petroleum ...	5
„ Workshops and Work places inspected	7

## DUSTING.

Requests received ...	997
Dust bins inspected by Inspector...	2196

## MORTUARY.

Bodies received	12
Inquests held	9
Post Mortems	6



# NAMES AND ADDRESSES OF MEMBERS OF THE

## South Hornsey Local Board.

### Chairman :

C. B. MELLUISH, C.C.  
(Milton Road Division)

70, Mountgrove Road, Highbury.

### Members :

AUSTEN, GEORGE WILLIAM

69, Queen's Road, Finsbury Park.

BLOWER, THOMAS

64, Milton Road, South Hornsey.

HANDLEY, CHARLES

15, High Street, Stoke Newington.

HARPER, JAMES

25, Wilberforce Road, Finsbury Park

HARRINGTON, CORNELIUS J.

77, Allen Road, South Hornsey.

HOLLANDS, EDWARD RICHARD

42, Stoke Newington Green.

JOHNSTON, ANDREW W., C.C.  
(Brownswood Park Division)

5, Digby Road, Finsbury Park

PRICE, ERNEST CHARLES

22, Brownswood Park, Green Lanes.

THROWER, HENRY J.

38, Brownswood Road, Finsbury Park

UGLOW, WILLIAM TAYLOR

58, Matthias Road, South Hornsey.

WINCKWORTH, GEO. B.

1, Alexandra Road, Finsbury Park

## Members of Guardian Board.

BALL, GEORGE

95, Upper Tollington Park, Stroud Green.

BIRD, COL. JOHN W.

Woodside, Tottenham Lane, Hornsey

HARPER, JAMES

25, Wilberforce Road.

LINKLATER, REV. ROBERT

The Vicarage, Stroud Green.

PASCOE, WILLIAM T.

6, Oakfield Road, Finsbury Park.

PIERCY, WILLIAM

21, Endymion Road, Finsbury Park.

TOYNE, JAS. J.

98, North Road, Highgate.

TUCKER WALLACE J.

32, Albany Road, Stroud Green.

## LOCAL BOARD OFFICERS.

---

*Clerk*—EDWARD B. BENNETT, to whom communications to the Board should be addressed.

*Surveyor and Sanitary Inspector*—M. W. JAMESON, C.E., who attends from 9 to 11 a.m. daily. To whom notice of all Building erections, Additions, &c., must be given, and to whom application should be made in case of Infectious Disease, Nuisances, Sanitary Defects, Non-Removal of Dust, &c. Residence adjoining the Offices.

*Medical Officer*—Dr. THOS. S. H. JACKMAN, L.R.C.P.L., &c.,  
11, Stoke Newington Road, N.

*Collector of Local Rates*—A. H. BARNES, Clonbrock Road, South Hornsey, N.  
Who attends at the Local Board Offices on Tuesday from 10 to 12 a.m., and to whom all communications as to Local Rates should be made.

*Assistant Clerk*—ALBERT E. BENNETT. Offices—Milton Road.

---

## GUARDIAN BOARD AND OTHER OFFICERS

---

*Clerk to Guardian Board and Assessment Committee*.—FRANCIS SHELTON, Edmonton Union, Edmonton, N.

*Relieving Officer*—WALTER WILLIAM DEW, 35, Palace Road, Crouch End, N. Who attends at the Clonbrock Hall, Clonbrock Road, South Hornsey, Monday and Wednesday, 5 to 6 p.m., and on Friday, 12 to 2 p.m.

*Collector of Poor Rates*—J. W. ALLARD,—Muswell Hill, Hornsey.

*Coroner's Officer*—SERGEANT RODGERS, Police Station, High Street, Stoke Newington, N.

*Registrar of Births and Deaths*—JAMES G. RANDALL, attends at the Offices of the Board on Mondays from 3 to 5 p.m., on Wednesdays from 5 to 6 p.m., and Fridays from 10 to 12 noon. Also at 157, Ferme Park Road, Hornsey, N., on Mondays and Wednesdays, 9 a.m. to 10.30 a.m.; and 7 p.m. to 8.30 p.m. Thursdays 3 p.m. to 5 p.m. Fridays 7 p.m. to 8.30 p.m. Saturdays 9 a.m. to 12 noon.

*Water Rate Collector*—T. DAWSON, who attends at the Local Board Offices, Milton Road, on Tuesday from 1 to 2 p.m., and on Fridays from 2 to 3 p.m.



## Schedule of Roads with Days for Removal of Dust, House Refuse, &c.

---

### MONDAYS.

Seven Sisters' Road  
Brownswood Park

Blackstock Road  
Queen's Road

Mountgrove Road  
Princess Road

### TUESDAYS.

Milton Road  
Clonbrock Road  
Matthias Road

Allen Road  
Shakespeare Road  
Hornsey Place

Leonard Place  
Spenser Road  
Brighton Road

### WEDNESDAYS.

Albion Road  
Brownswood Road  
Alexandra Road

Winston Road  
Digby Road  
Portland Road

Green Lanes  
King's Road  
Adolphus Road

### THURSDAYS.

Cowper Road  
Victoria Grove  
Chalmers Terrace  
Wordsworth Road

Walford Road  
Victoria Grove, W.  
Shipway Terrace  
Arthur Road  
Nevill Road

Victoria Road  
Hamilton Place  
Gainsboro' Road  
Warwick Road

### FRIDAYS.

Wilberforce Road  
Somerfield Road

Finsbury Park Road  
Gloucester Road

Henry Road

### SATURDAYS.

Gordon Road  
Thomas Place  
Stoke Newington Road

Howard Road  
Watson Street  
Goldsmith Square

Philp Street  
High Street

Householders are requested to expose the D cards in their windows before 8 a.m. on the day appointed for removal of Dust in their respective roads. Sanitary Dustbins which require frequent attention, can be emptied weekly by applying to the Surveyor.

In providing **SANITARY DUST BINS**, it is requested that they should be of such a size as to hold one week's refuse, a useful size being 1ft. 4in. in diameter by 2ft. 6in. high; they should be made of galvanized Iron provided with a cover, and a pair of handles for carrying.

**ROAD SWEEPINGS** for Gardening Purposes may be had gratis on application to the Surveyor.



# FINANCIAL STATEMENT

*Of Receipts and Expenditure by the Local Board for the above named Local Government District for the year ended at the 25th March, 1893.*

Dr.

	£	s.	d.
Balance at commencement of year ...	1471	3	11½
To General District Rate ...	5840	7	0
„ Main Drainage Rate ...	1375	10	1
„ Private Improvement Rates ...	971	1	8
„ Making Drain Connections ...	79	17	6
„ Middlesex County Council } re Main Roads	300	0	0
„ Fire Expenses Recovered ...	12	12	3
„ Legal Expenses Recovered ...	58	6	6
„ Loans (12) and (13) ..	2400	0	0
„ Receipts from other sources ...	27	12	7
	<u>£12,536</u>	<u>11</u>	<u>6½</u>

Cr.

	£	s.	p.
By Sewerage ...	304	16	6½
„ Street Improvements ...	591	15	10
„ Main Roads, Maintenance of ...	298	2	8
„ Other Roads ...	1195	2	4
„ Stable Expenses ...	343	9	10
„ Scavenging ...	602	15	0
„ Watering ...	365	11	1
„ Lighting ...	789	5	3
„ Fire Brigade ...	249	9	11
„ Infectious Diseases ...	58	17	6
„ Land for Extension of Yard ...	120	0	0
„ Election Expenses ...	34	11	0
„ Legal Expenses ...	85	13	6
„ Salaries ...	681	1	8
„ Poundage ...	242	16	8
„ Establishment Charges ...	385	11	5
„ Repayment of Loans and Interest ...	1833	2	5
„ Main Drainage Precepts ...	1179	0	4
„ Purchase of Land ...	1700	0	0
„ Works re Newington Green Improvement	700	0	0
„ Balance ...	775	8	7
	<u>£12,536</u>	<u>11</u>	<u>6½</u>

Examined and found correct, (Signed) B. F. HARTSHORNE, *Government Auditor.*



**FIRE!** In case of an outbreak, apply at the Engine Station adjoining the Local Board Offices, or to the Firemen in attendance at Somerfield Road. Fire-alarm posts are situated as follows in the Brownswood Park District :—

Queens Road by King's Road,  
Somerfield Road by Wilberforce Road, and  
Seven Sisters Road by Alexandra Road.

---

And also near Police Station—High Street.

Fire Escapes are Stationed at Milton Road and Somerfield Road.

It would be esteemed a favour if Ratepayers will assist the Board, and consult their own interests, by giving information of any person seen by them wrongfully breaking the glass and tampering with the apparatus.

**CAUTION!** The Board maintaining their own Fire Brigade, the Ratepayers are requested to avoid payment to bogus Firemen calling at their houses.

**GARDENING OPERATIONS.**—Complaints having been made of the throwing into the road-way, of grass cuttings, paper, straw, etc., Householders are requested to see that these are burnt ; a Reward of 10/- is offered for information leading to the conviction of offenders.

