

**Two trees bearing silhouettes of families: population increase in Nigeria.
Colour lithograph by Nigerian Educational Research & Development
Council (NERDC), ca. 1990.**

Publication/Creation

Lagos (3, Jibowu Street, Yaba, Box 8058) : Nigerian Educational Research & Development Council (NERDC), [1990?] (Nigeria : Printed by Nerdc Press)

Persistent URL

<https://wellcomecollection.org/works/gha3u5vj>

License and attribution

Conditions of use: it is possible this item is protected by copyright and/or related rights. You are free to use this item in any way that is permitted by the copyright and related rights legislation that applies to your use. For other uses you need to obtain permission from the rights-holder(s).

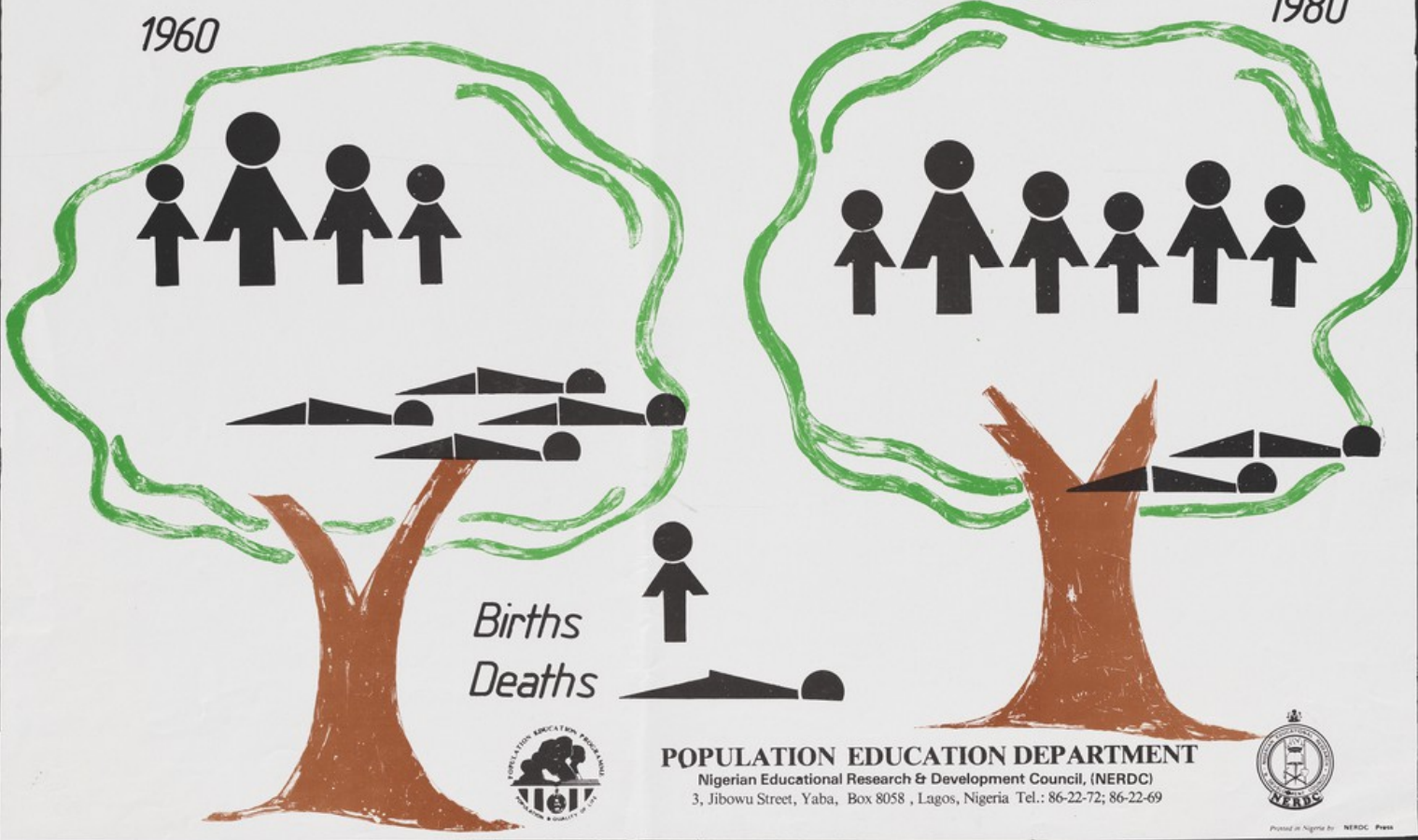
**wellcome
collection**

Wellcome Collection
183 Euston Road
London NW1 2BE UK
T +44 (0)20 7611 8722
E library@wellcomecollection.org
<https://wellcomecollection.org>

POPULATION INCREASE

1960

1980



Births
Deaths



POPULATION EDUCATION DEPARTMENT

Nigerian Educational Research & Development Council, (NERDC)
3, Jibowu Street, Yaba, Box 8058, Lagos, Nigeria Tel.: 86-22-72; 86-22-69



Printed in Nigeria by NERDC Press