

Hemispherectomy in an adult patient: four figures. Carbon dust drawing by A.J. Arnott, 1960.

Contributors

Arnott, Audrey J.

Publication/Creation

May 6th 1960.

Persistent URL

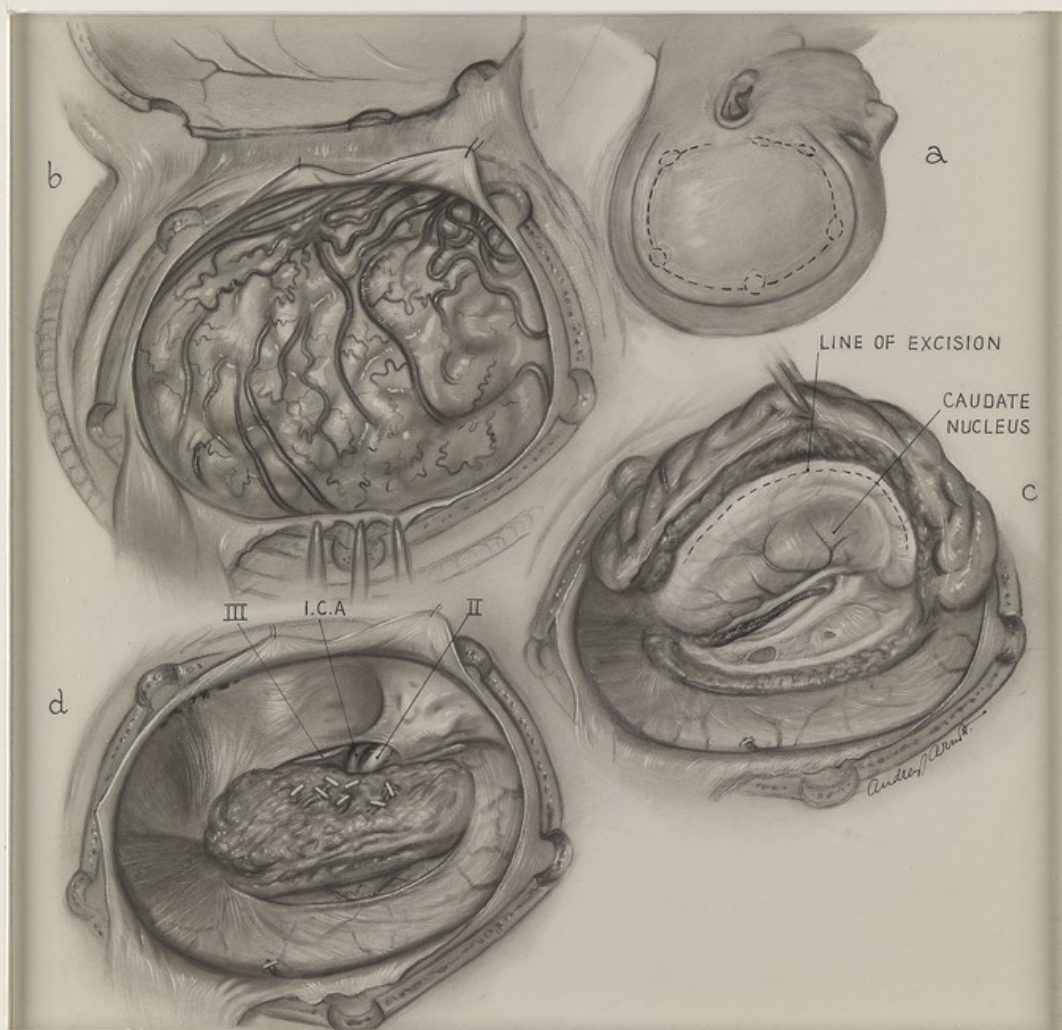
<https://wellcomecollection.org/works/wyk8afzz>

License and attribution

Conditions of use: it is possible this item is protected by copyright and/or related rights. You are free to use this item in any way that is permitted by the copyright and related rights legislation that applies to your use. For other uses you need to obtain permission from the rights-holder(s).



Wellcome Collection
183 Euston Road
London NW1 2BE UK
T +44 (0)20 7611 8722
E library@wellcomecollection.org
<https://wellcomecollection.org>



Audrey Arnott

Operation for Hemispherectomy on an adult patient

Carbon dust