

**A boy's head touches an electric pylon as he attempts to retrieve his football on a ladder: public safety warning in Kenya. Colour lithograph by Kenya Power & Lighting Co., ca. 2000.**

**Publication/Creation**

Kenya : Kenya Power & Lighting Co KPLC, [2000?]

**Persistent URL**

<https://wellcomecollection.org/works/h2ugm8hf>

**License and attribution**

Conditions of use: it is possible this item is protected by copyright and/or related rights. You are free to use this item in any way that is permitted by the copyright and related rights legislation that applies to your use. For other uses you need to obtain permission from the rights-holder(s).

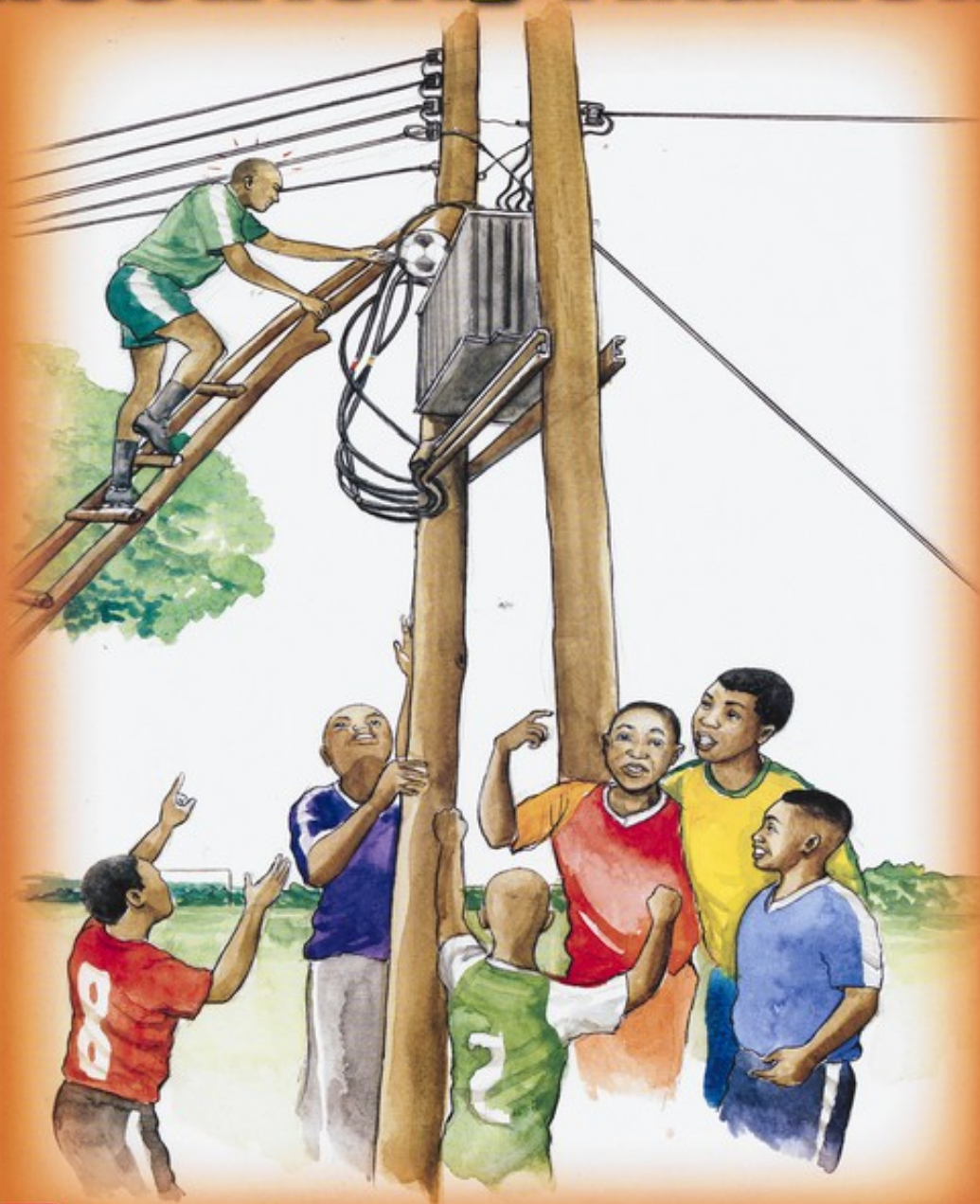
**wellcome  
collection**

Wellcome Collection  
183 Euston Road  
London NW1 2BE UK  
T +44 (0)20 7611 8722  
E [library@wellcomecollection.org](mailto:library@wellcomecollection.org)  
<https://wellcomecollection.org>



Kenya Power & Lighting Co. Ltd

# Children Should Not be allowed to play near Electricity Fixations.



## This could result into Injury or Death

This message is from the Kenya Power & Lighting Co. Ltd., in the public safety  
[www.kplc.co.ke](http://www.kplc.co.ke)