

An HIV treatment journey / NAM.

Contributors

National AIDS Manual (Organisation)

Publication/Creation

London : NAM, 2009.

Persistent URL

<https://wellcomecollection.org/works/zkcqjd9k>

License and attribution

Conditions of use: it is possible this item is protected by copyright and/or related rights. You are free to use this item in any way that is permitted by the copyright and related rights legislation that applies to your use. For other uses you need to obtain permission from the rights-holder(s).



Wellcome Collection
183 Euston Road
London NW1 2BE UK
T +44 (0)20 7611 8722
E library@wellcomecollection.org
<https://wellcomecollection.org>

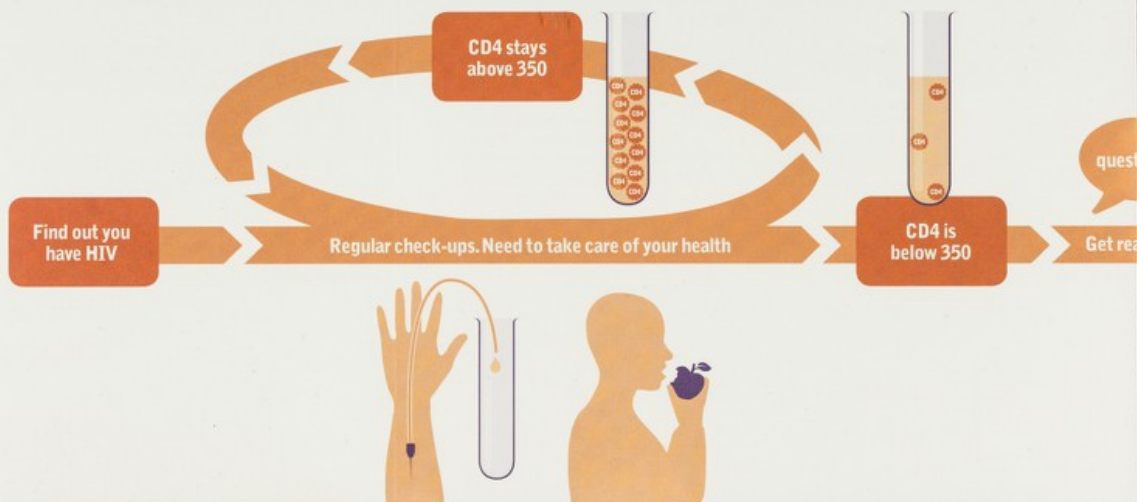
nam www.aidsmap.com

the basics an HIV treatment journey



This is a diagram that shows the journey a lot of people go on with HIV treatment.

However each person's situation is different. Your own circumstances may mean that the journey you take is slightly different.





Notes

Want to find out more?

For more information on this topic:

- read Terrence Higgins Trust's booklet 'Your Treatment', or
- speak to an adviser at THT Direct (phone: 0845 12 21 200).

For more information about HIV, NAM provides free fact sheets, information booklets, e-mail bulletins, a monthly newsletter, a comprehensive website (**aidsmap.com**) and a website specifically for people living with HIV (**namlife.org**).

Contact us by calling 020 7840 0050 or by sending an e-mail to info@nam.org.uk

Has this resource been useful to you? Please let us know what you think by visiting www.aidsmap.com/feedback, by phoning us or by sending an e-mail. Your feedback helps us to improve the services we offer you.

NAM

Lincoln House
1 Brixton Road
London SW9 6DE

Phone: 020 7840 0050

Fax: 020 7735 5351

Website: www.aidsmap.com

E-mail: info@nam.org.uk

**Thanks to the following
organisations that have
funded this leaflet.**

NHS Pan-London HIV
Prevention Programme and
NHS South West Essex

Copyright ©NAM 2009.

If you need extra copies of this fact sheet, or
would like to translate, adapt or reproduce it,
please contact us.

Charity number 1011220

Crystal
Mark
17986



Clarity approved by
Plain English Campaign