

CD4 and viral load / NAM.

Contributors

National AIDS Manual (Organisation)

Publication/Creation

London : NAM, 2009.

Persistent URL

<https://wellcomecollection.org/works/kegp4rjd>

License and attribution

Conditions of use: it is possible this item is protected by copyright and/or related rights. You are free to use this item in any way that is permitted by the copyright and related rights legislation that applies to your use. For other uses you need to obtain permission from the rights-holder(s).



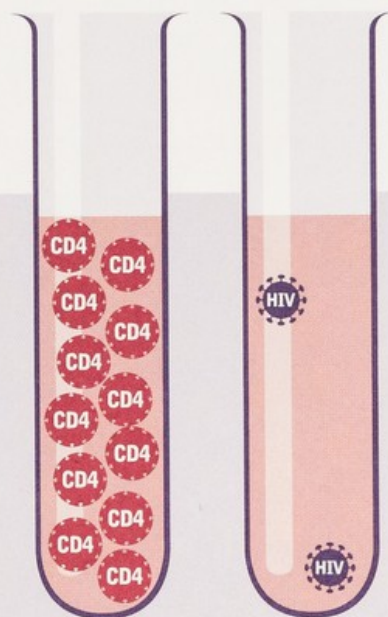
Wellcome Collection
183 Euston Road
London NW1 2BE UK
T +44 (0)20 7611 8722
E library@wellcomecollection.org
<https://wellcomecollection.org>



www.aidsmap.com

the basics

CD4 and viral load



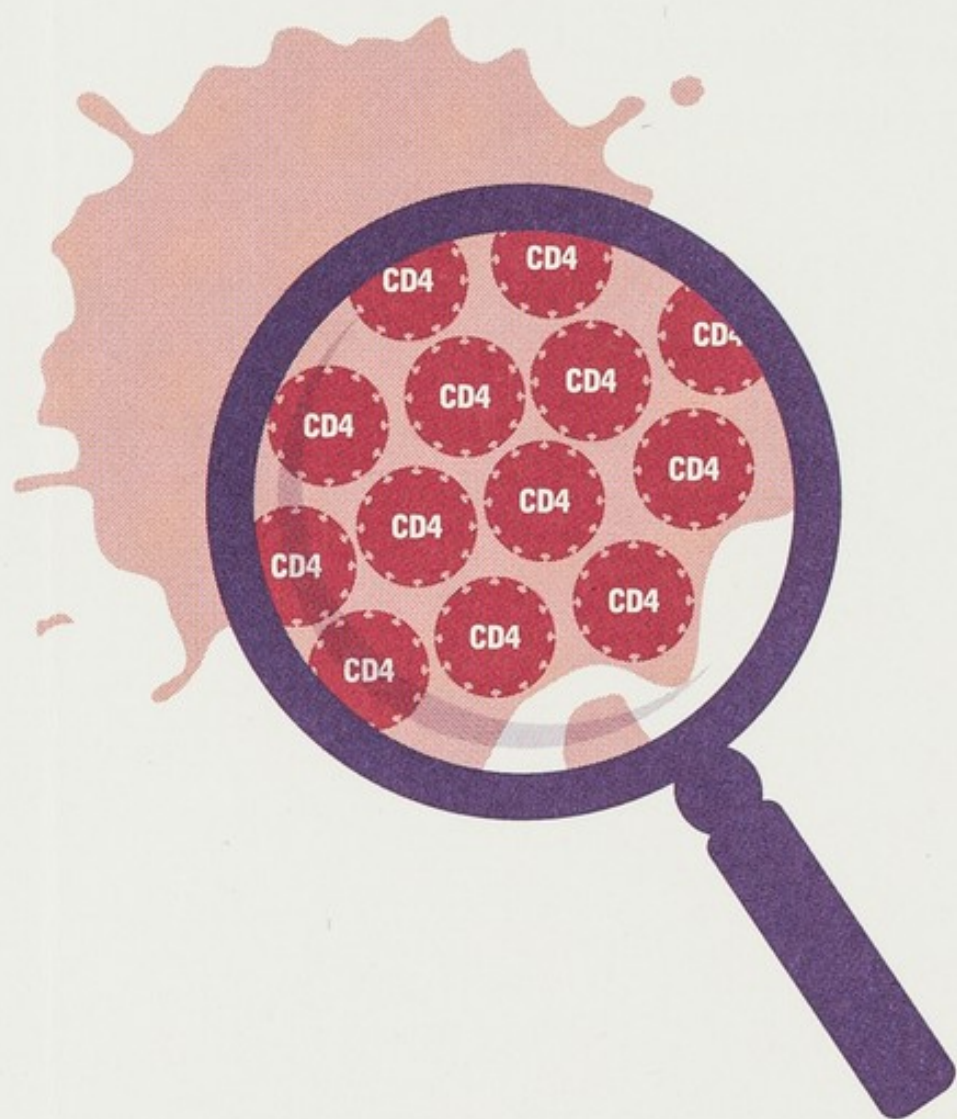
**It's important
for all people
with HIV to take
regular blood tests.**

**The two most
important blood
tests are for CD4
and viral load.**

- 1** CD4 cells are the most important cells in the immune system. Our immune system protects us against infections and illness.



- 2** The CD4 count tells you how many CD4 cells there are in a drop of blood. The more there are, the better.



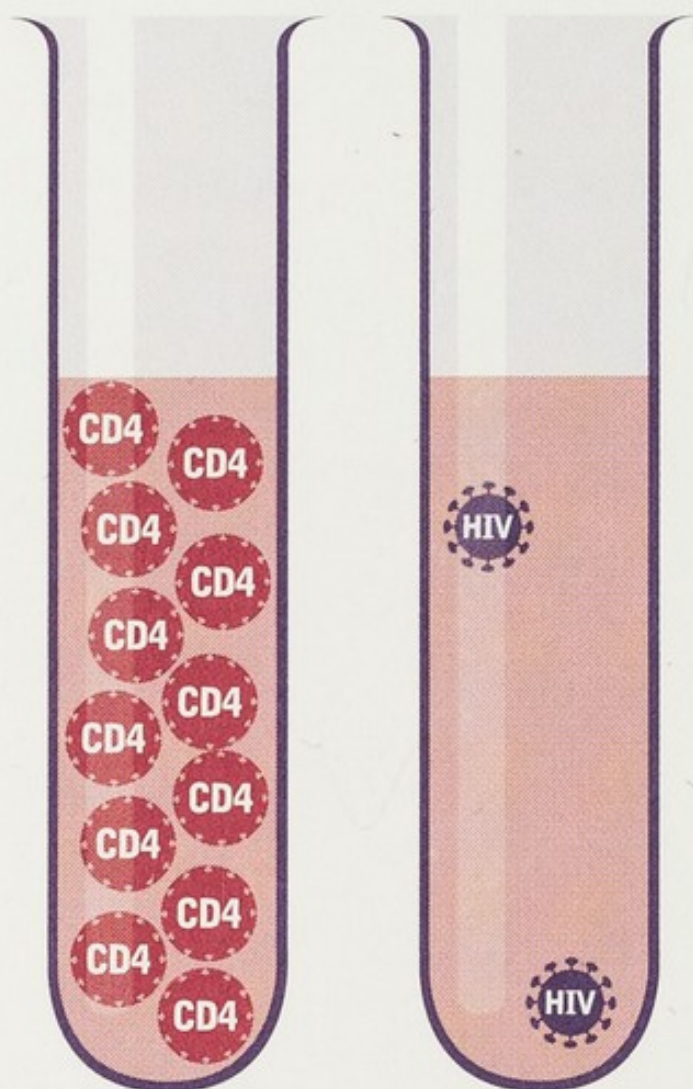
-
-
- 3** Viral load measures how much HIV there is in a drop of blood. You want to have as little HIV as possible.



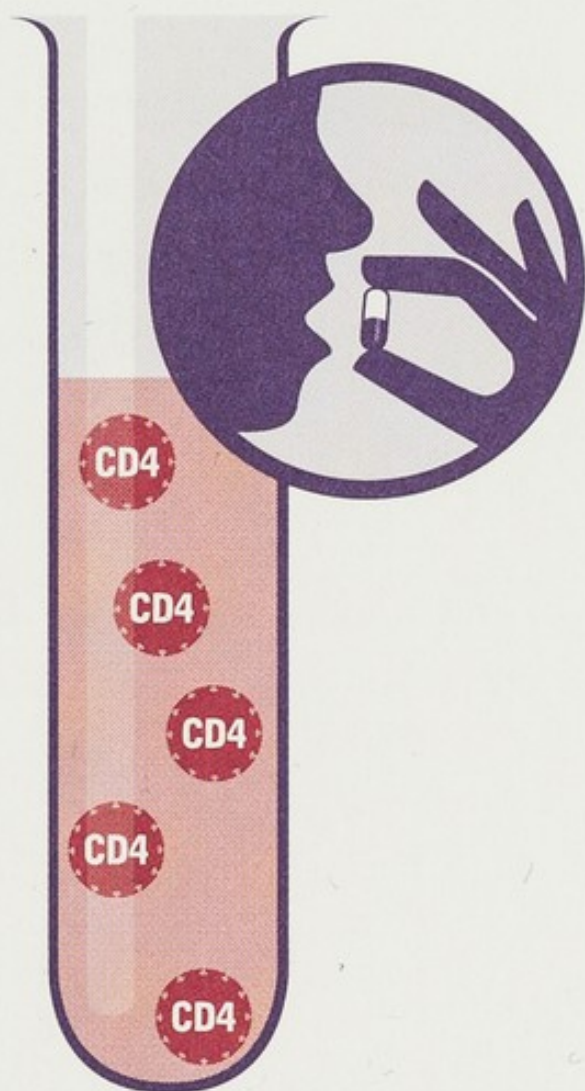
- 4** When the CD4 count is low, the viral load is usually high. This situation is not good.



- 5** When the CD4 count is high, the viral load is usually low. This is much better.



- 6** If your CD4 count has dropped to 350 or below, it's recommended you start treatment.



- 7** The result of treatment should be the CD4 going up, and the viral load going right down.



Important points

- **CD4 and viral load test results give essential information about the effect HIV is having on your body.**
- **The aim of HIV treatment is to have a very low (or 'undetectable') viral load and a high CD4 count.**

Notes

Quick guide to test results

CD4 counts

- Between 500 and 1200 = usual for people who don't have HIV
- Above 350 = HIV treatment **isn't** usually recommended
- Below 350 = HIV treatment **is** recommended
- Below 200 = there is a higher risk of illnesses and infections, so HIV treatment is recommended

Your doctor may give your CD4 results as a percentage

- Above 29% = similar to a CD4 count of above 500
- Below 14% = similar to a CD4 count of below 200

Viral load

- Between 100,000 and 1 million = high
- Below 10,000 = for people with HIV not on treatment, this is low
- Below 50 = known as an 'undetectable' viral load. The aim of HIV treatment is to have an undetectable viral load.

Want to find out more?

For more information on this topic:

- read NAM's fact sheets 'CD4 cell counts' and 'Viral load'
- read NAM's leaflet in this series 'Undetectable Viral Load'
- read Terrence Higgins Trust's booklet 'Your Treatment', or
- speak to an adviser at THT Direct (phone: 0845 12 21 200).

For more information about HIV, NAM provides free fact sheets, information booklets, e-mail bulletins, a monthly newsletter, a comprehensive website (**aidsmap.com**) and a website specifically for people living with HIV (**namlife.org**).

Contact us by calling 020 7840 0050 or by sending an e-mail to info@nam.org.uk

Has this resource been useful to you? Please let us know what you think by visiting www.aidsmap.com/feedback, by phoning us or by sending an e-mail. Your feedback helps us to improve the services we offer you.

NAM

Lincoln House
1 Brixton Road
London SW9 6DE

Phone: 020 7840 0050

Fax: 020 7735 5351

Website: www.aidsmap.com

E-mail: info@nam.org.uk

**Thanks to the following
organisations that have
funded this leaflet.**

NHS Pan-London HIV
Prevention Programme and
NHS South West Essex

Copyright ©NAM 2009.

If you need extra copies of this fact sheet, or
would like to translate, adapt or reproduce it,
please contact us.

Charity number 1011220

