

HIV+ : the science : HIV attacks and weakens the immune system, the body's defence against disease / Camden & Islington Gay Men's Team ; illustration by Mark Blann.

Contributors

Blann, Mark
Camden & Islington Gay Men's Team.
Camden Primary Care Trust.

Publication/Creation

London, Camden Primary Care Trust, [2003]

Persistent URL

<https://wellcomecollection.org/works/af44ankz>

License and attribution

Conditions of use: it is possible this item is protected by copyright and/or related rights. You are free to use this item in any way that is permitted by the copyright and related rights legislation that applies to your use. For other uses you need to obtain permission from the rights-holder(s).

**wellcome
collection**

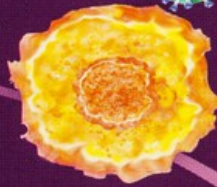
Wellcome Collection
183 Euston Road
London NW1 2BE UK
T +44 (0)20 7611 8722
E library@wellcomecollection.org
<https://wellcomecollection.org>

HIV+ THE SCIENCE

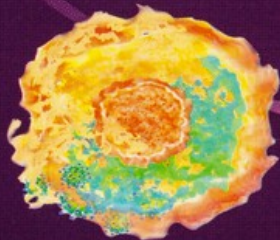
4 The new copies of HIV break out of the CD4 cell, destroying it in the process.



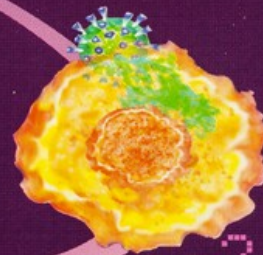
1 In your bloodstream, HIV (blue & green) latches on to a CD4 cell (orange), part of your immune system.



2 The CD4 cell has been turned into an HIV factory, churning out copies of the virus.



3 HIV penetrates the CD4 cell and starts to take it over.



HIV ATTACKS AND WEAKENS **the immune system**, the body's defence against **DISEASE**.

CAMDEN & ISLINGTON
gay
MEN'S TEAM

part of

LONDON GAY MEN'S
HIV PREVENTION PARTNERSHIP

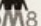
Camden **NHS**
Primary Care Trust

ALL ABOUT HIV⁺

HIV infects one particular component of the immune system, the CD4 (or Helper T) cells. In simple terms, the CD4 cells are a kind of white blood cell, which float in your bloodstream, co-ordinating your body's response to an infection. As more and more CD4 cells are destroyed by HIV, so the body loses its ability to fight disease. When this happens, a person will be diagnosed as having AIDS.



Buy condoms and lube at great prices online at...  freedomshop.com

www.metromate.org.uk  MetroM8

This is one of a series of six postcards adapted from an exhibition entitled ALL ABOUT HIV⁺, which was produced by Camden & Islington Gay Men's Team. For more details phone 020 7530 3911

Illustration: by Mark Blann