

A young man holding a pen, a woman and a man with headphones around his neck with a card bearing the words 'Carte MNEF Campus'; includes the AIDS red ribbon and a message about how the MNEF continues to fight against AIDS; an advertisement for the MNEF, Mutuelle Nationale des Étudiants de France, 'the health partner for students'. Colour lithograph.

Publication/Creation

[France] : MNEF, Mutuelle Nationale des Étudiants de France, [between 1990 and 1999]

Persistent URL

<https://wellcomecollection.org/works/m3easbbr>

License and attribution

Conditions of use: it is possible this item is protected by copyright and/or related rights. You are free to use this item in any way that is permitted by the copyright and related rights legislation that applies to your use. For other uses you need to obtain permission from the rights-holder(s).

**wellcome
collection**

Wellcome Collection
183 Euston Road
London NW1 2BE UK
T +44 (0)20 7611 8722
E library@wellcomecollection.org
<https://wellcomecollection.org>

MNEF

Le partenaire santé de vos études

**Avec la MNEF,
les étudiants s'engagent**

Déjà, grâce aux étudiants
600 000 F récoltés pour
le **SIDACTION**, organisé par
les 7 chaînes de télévision.

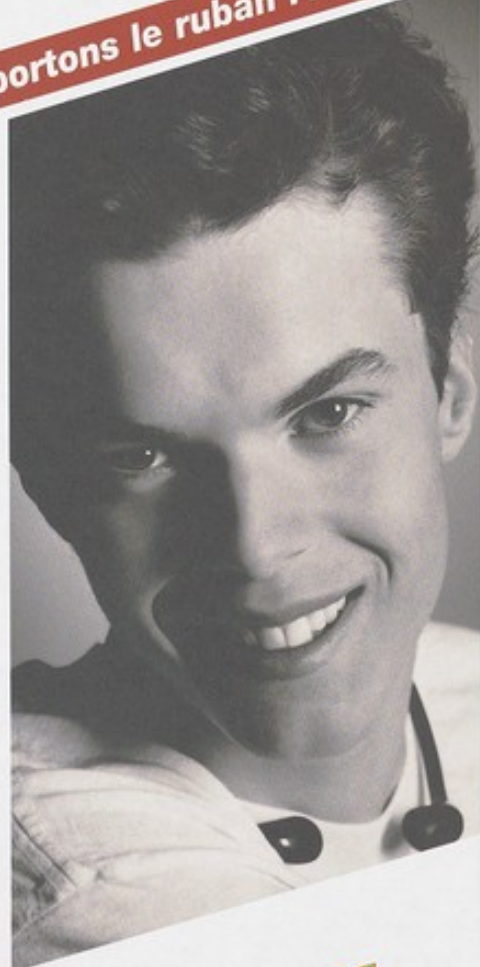
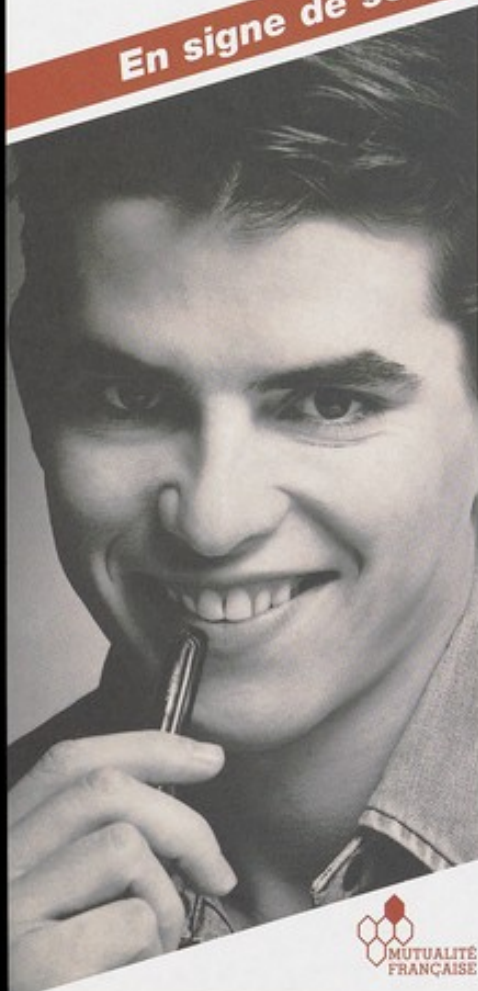


**Ensemble continuons !
1 Franc**

par cotisation reversé
par la MNEF pour la recherche
et l'action contre le Sida !

En signe de solidarité,

portons le ruban rouge !



Pour plus
d'informations,
tapez 3615 MNEF

