

**Human anatomy and physiology: western ideas presented for the education of Chinese medical staff. Colour lithographs, 1956.**

**Publication/Creation**

Shanghai : [publisher's name in Chinese?], 1956-11-2.

**Persistent URL**

<https://wellcomecollection.org/works/bqspg66f>

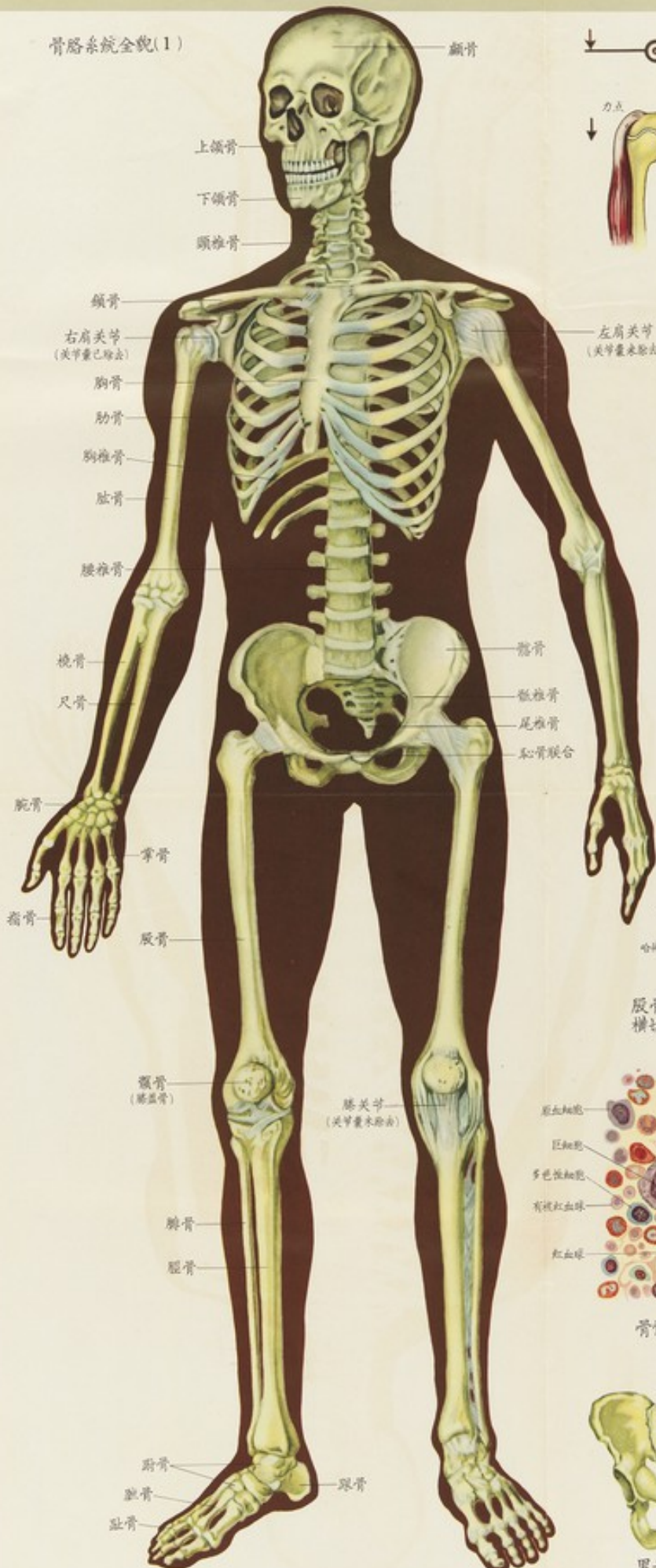
**License and attribution**

Conditions of use: it is possible this item is protected by copyright and/or related rights. You are free to use this item in any way that is permitted by the copyright and related rights legislation that applies to your use. For other uses you need to obtain permission from the rights-holder(s).

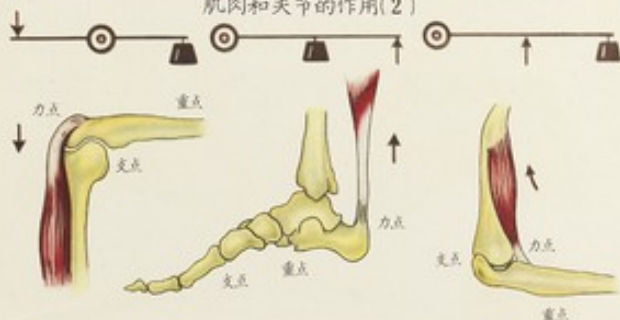
**wellcome  
collection**

Wellcome Collection  
183 Euston Road  
London NW1 2BE UK  
T +44 (0)20 7611 8722  
E [library@wellcomecollection.org](mailto:library@wellcomecollection.org)  
<https://wellcomecollection.org>

骨骼系統全貌(1)



肌肉和關節的作用(2)



正常直立時姿勢(4)

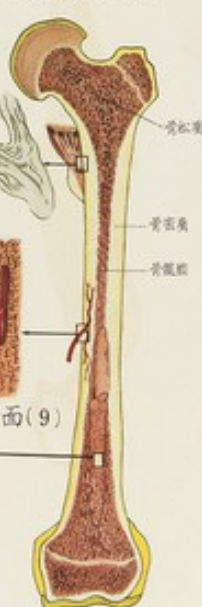
駝背直立時姿勢(3)



骨密質橫切面



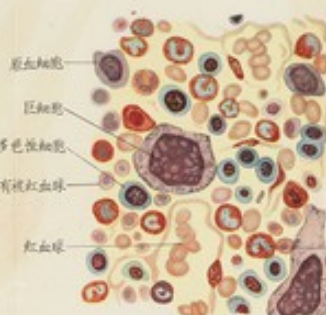
股骨縱切面(7)



股骨中段橫切面(8)



股骨中段縱切面(9)



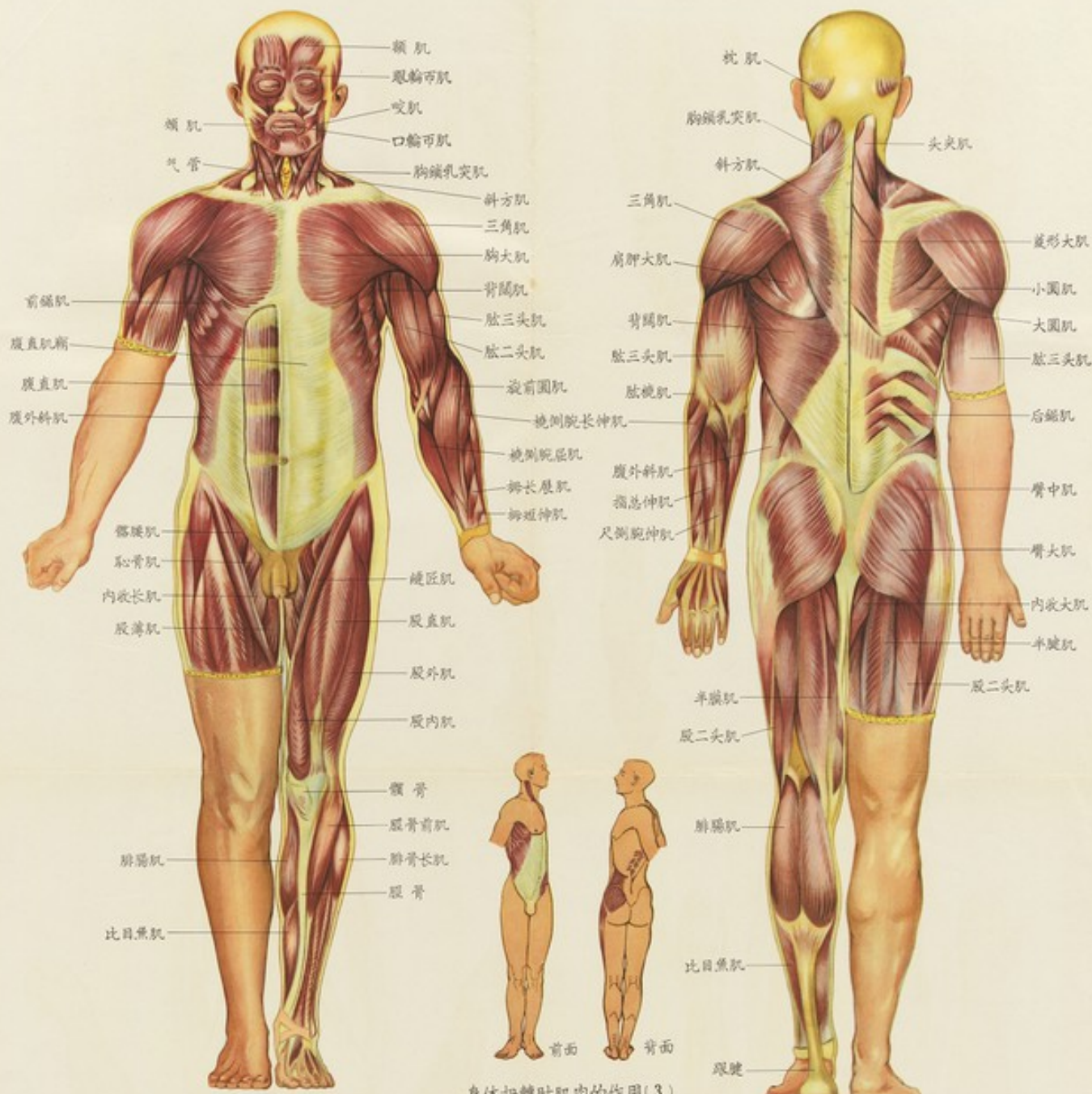
骨髓細胞圖(10)



男子骨盆(6)



女子骨盆(5)



前面的肌肉(1)

后面的肌肉(2)

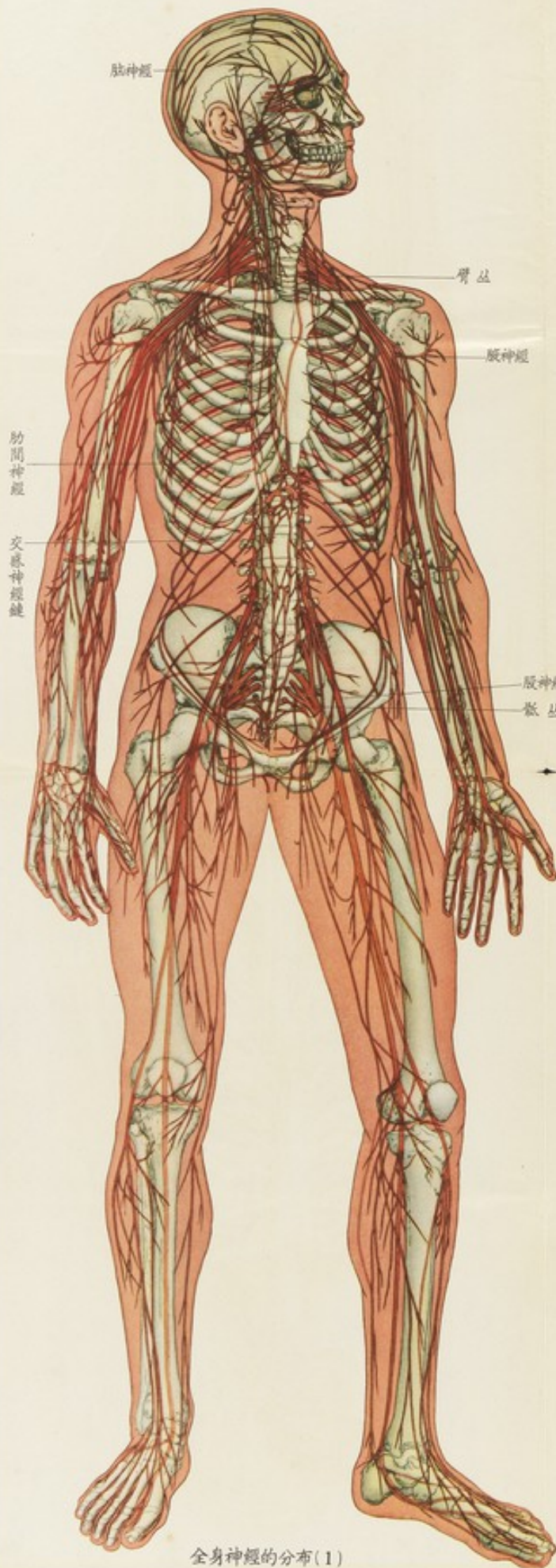
身体扭转时肌肉的作用(3)

脊髓时肌肉的作用(4)

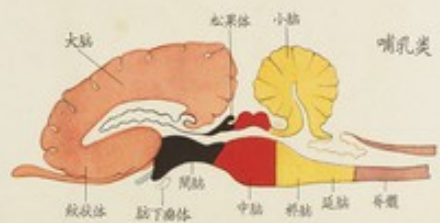
横纹肌(7)

平滑肌(6)

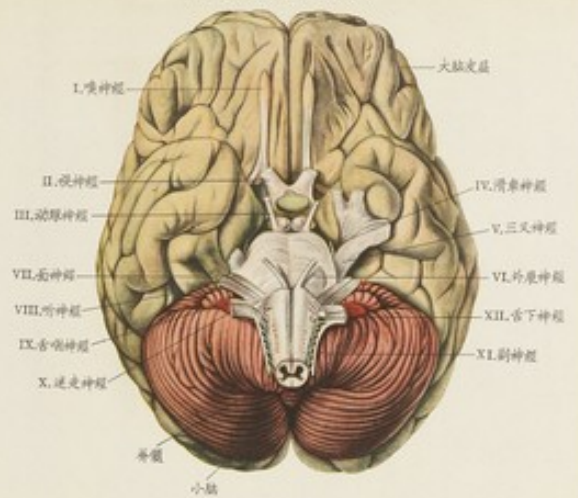
心肌(5)



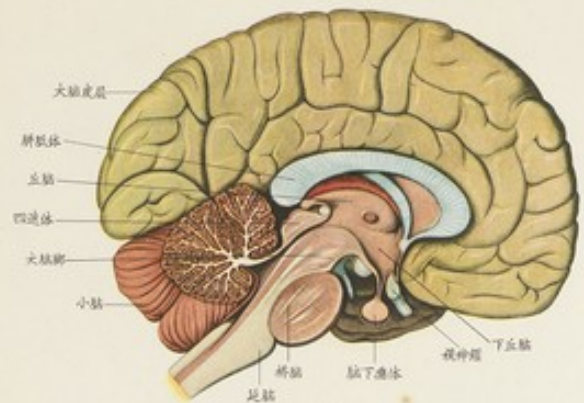
全身神經的分布(1)



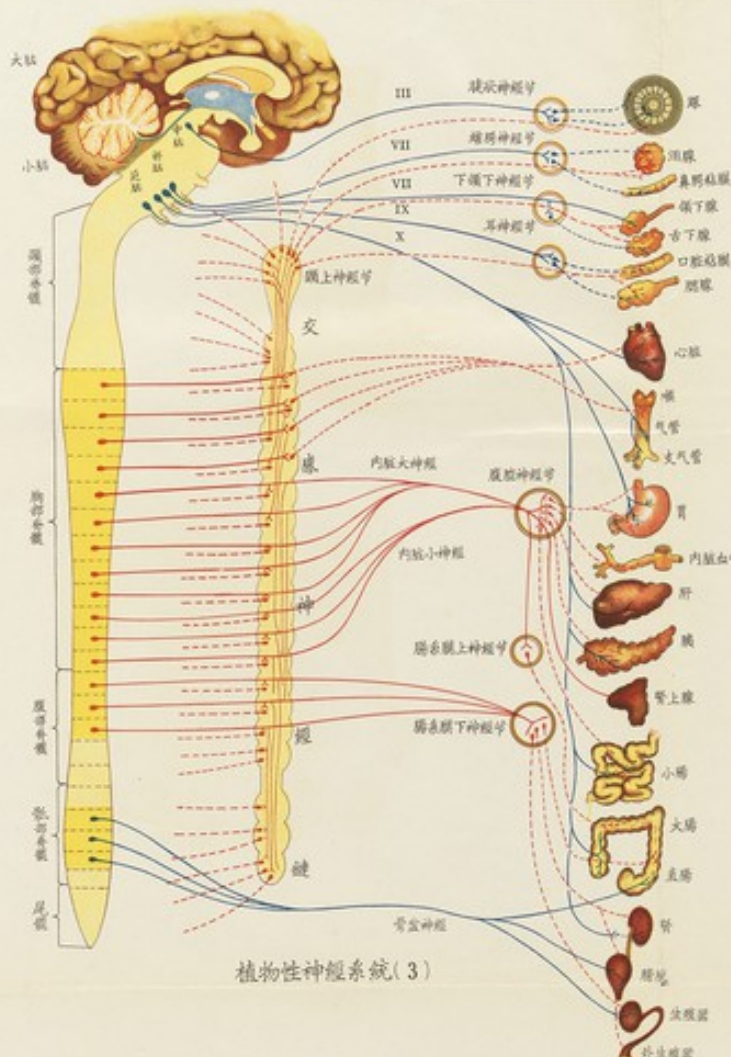
神經系統的進化(8)



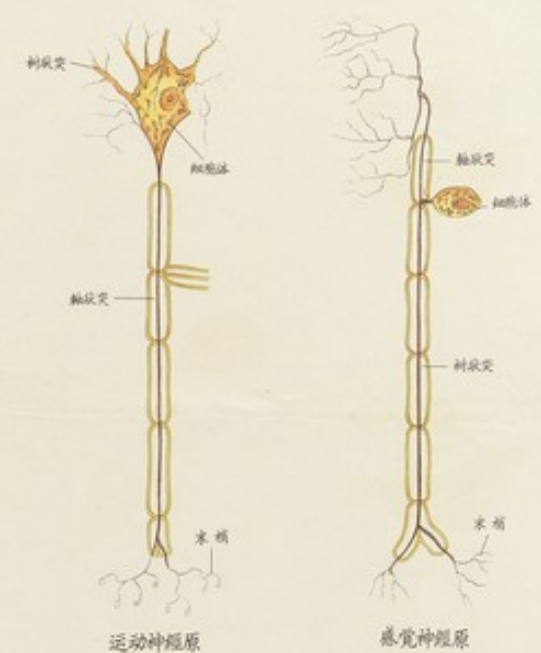
腦的腹面(2)



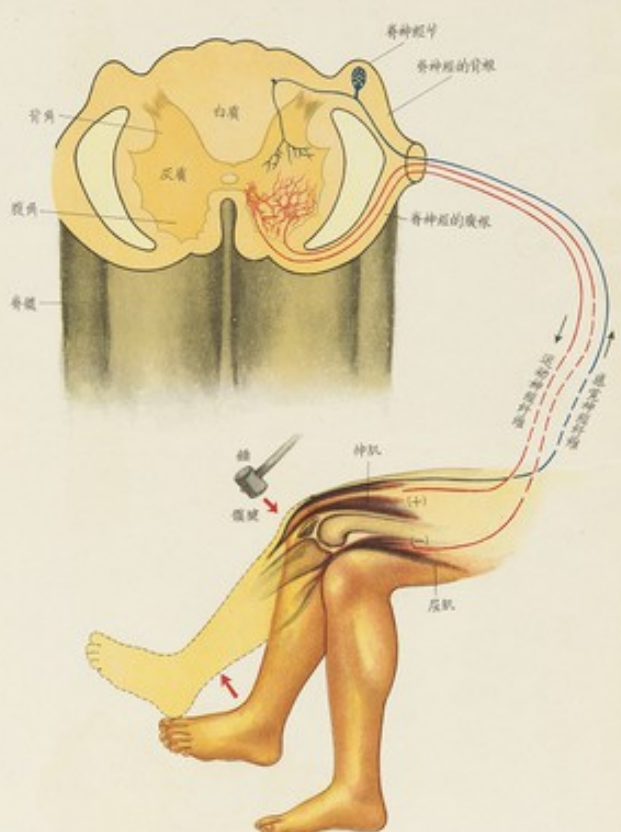
腦的內側面(6)



植物性神經系統(3)



神經原(4)

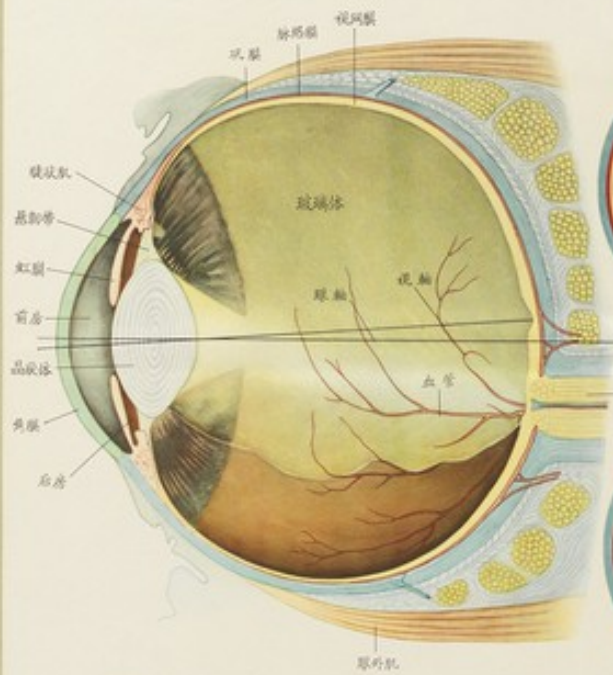


脊髓剖面 and 反射作用(5)



條件反射的形成(7)

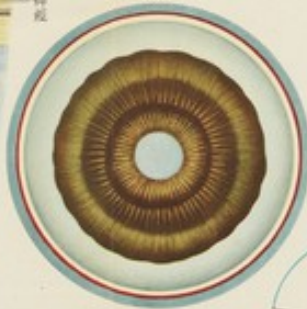
眼球的纵切面(1)



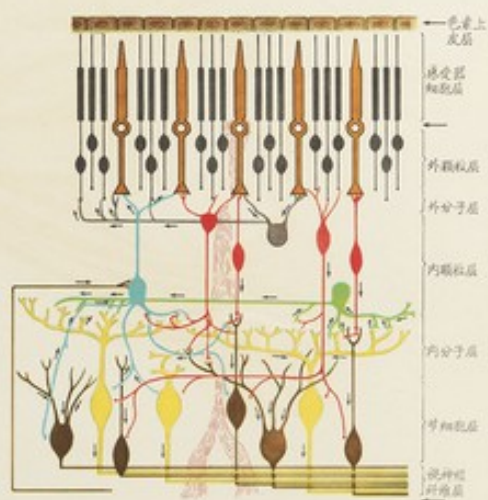
眼底(2)



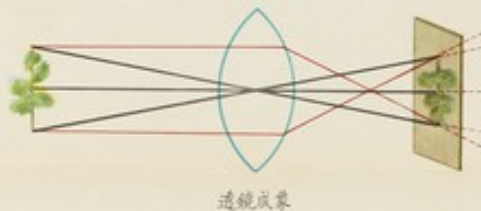
瞳孔(3)



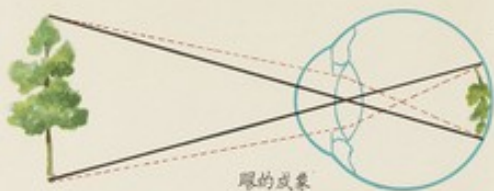
视网膜层次及其神经联系(6)



透镜成像和眼成像(4)

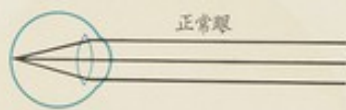


透镜成像

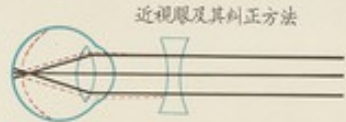


眼的成像

远视、近视和散光(5)



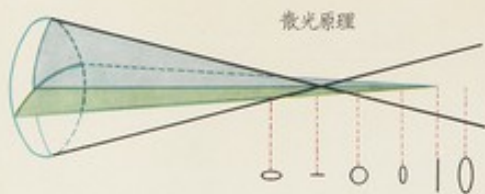
正常眼



近视眼及其矫正方法

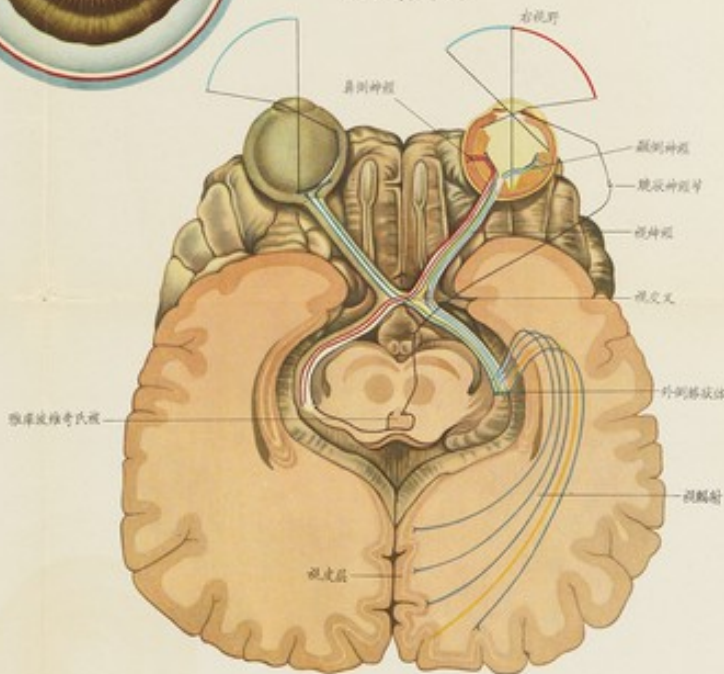


远视眼及其矫正方法

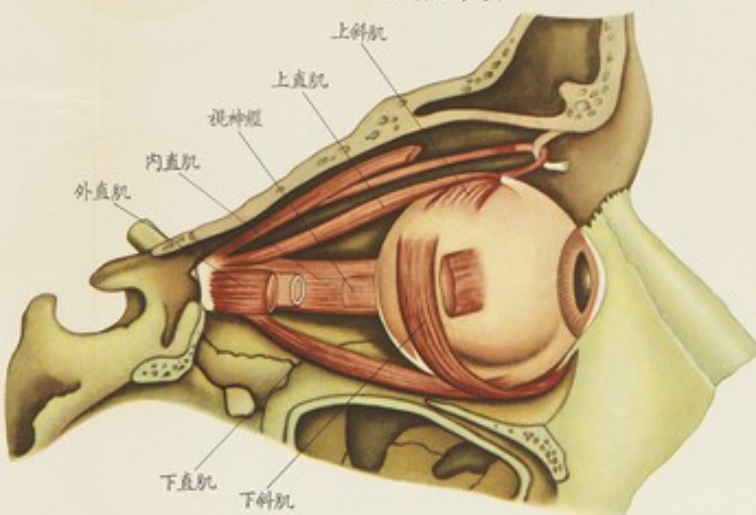


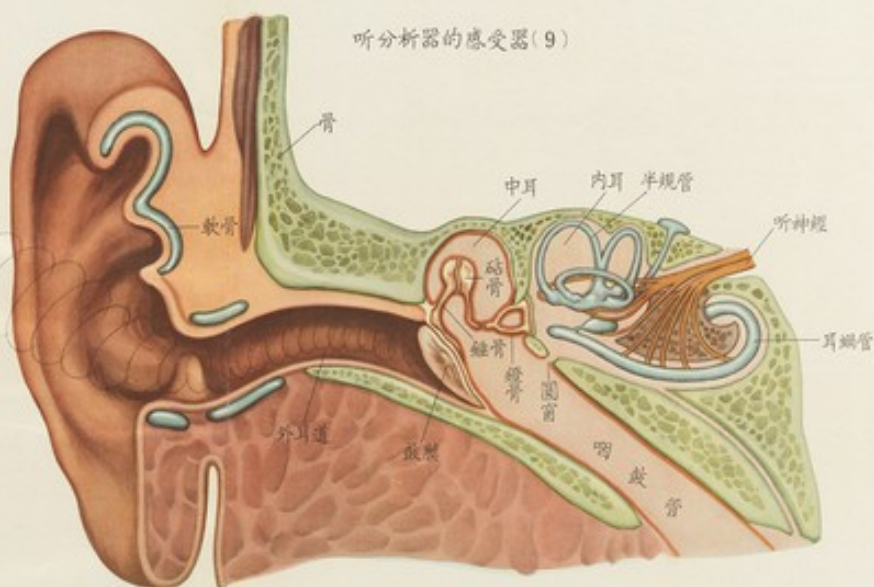
散光原理

视分析器(7)



眼外肌肉(8)





听分析器的感受器(9)

嗅分析器的感受器—鼻腔嗅部(12)

味分析器的感受器—舌粘膜的味蕾(11)



内耳戈蒂器官(10)



人体各部触觉感受器的疏密(15)

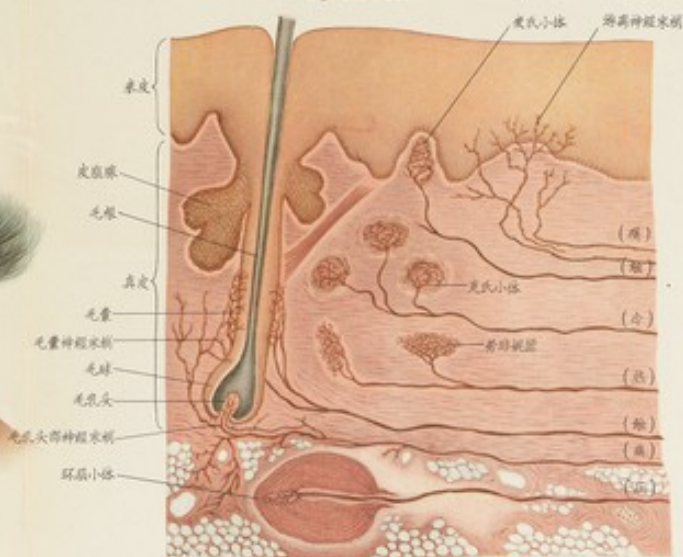


肌梭 (14)

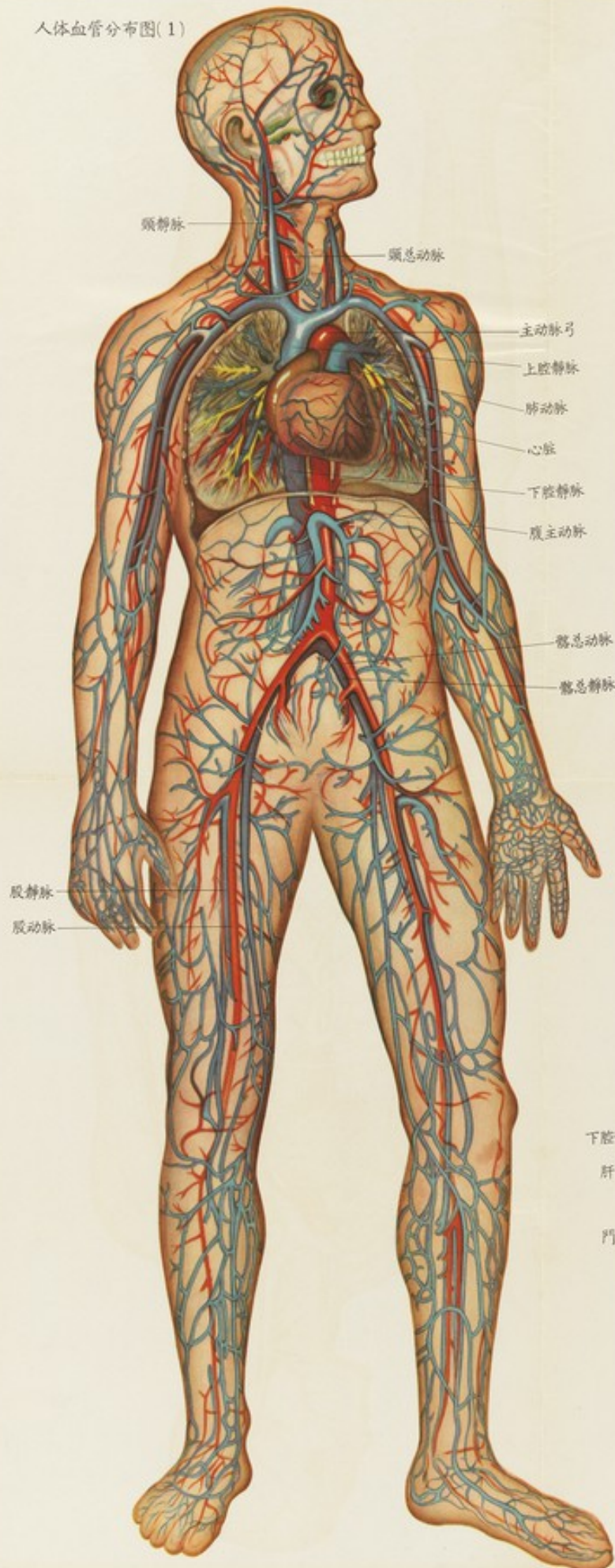


肌梭感受器(13)

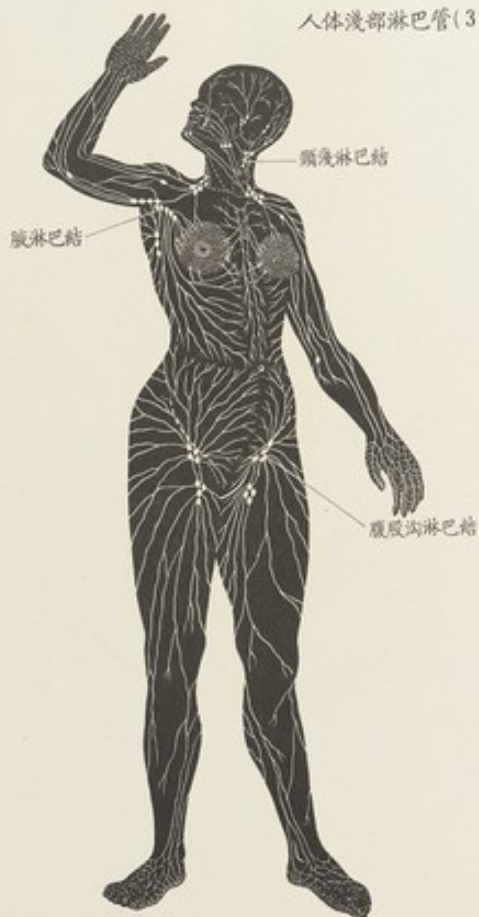
皮肤感受器分布模式图(16)



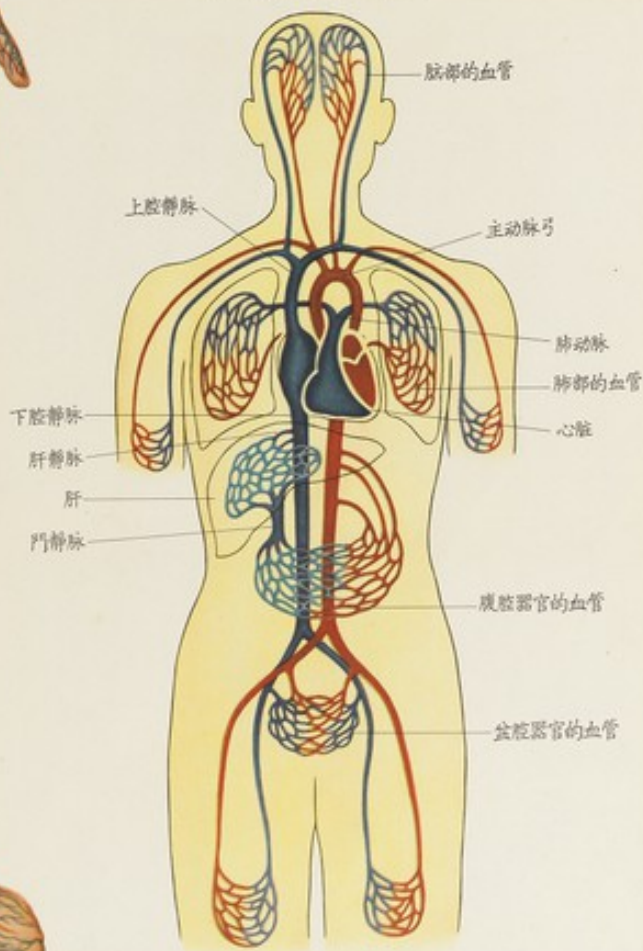
人体血管分布图(1)



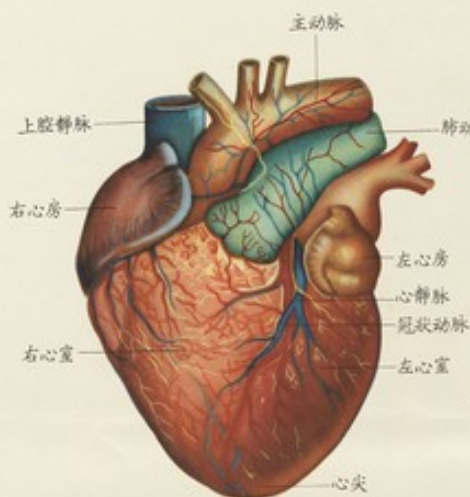
人体浅部淋巴管(3)



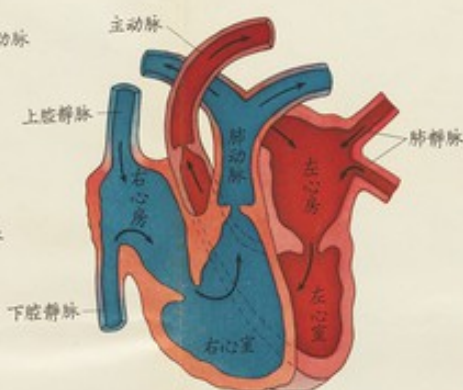
血液循环的模式图(2)



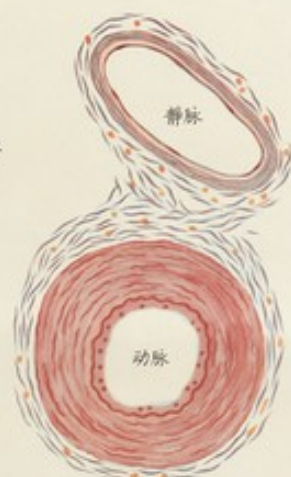




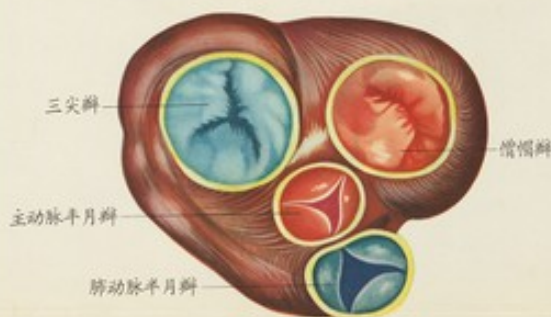
心脏(4)



血液在心脏中的循环(5)



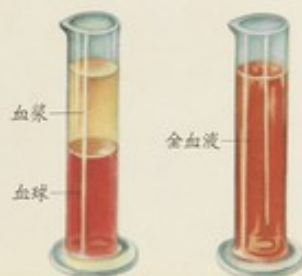
小血管的横切面(8)



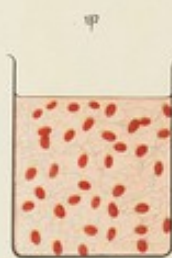
心脏的瓣膜(6)



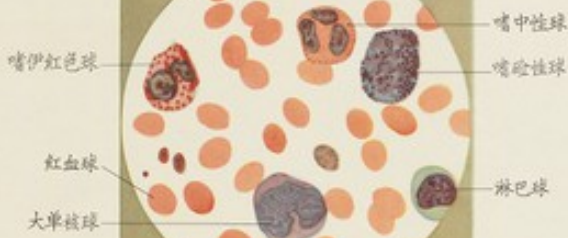
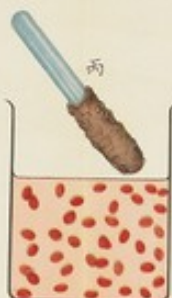
心脏瓣膜作用的示意图(7)



血球和血浆的比重(9)



血液凝固和去纤维蛋白的模式图(11)



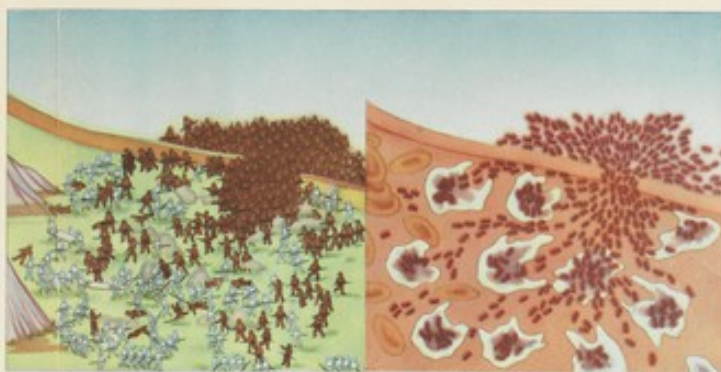
血液涂片(10)



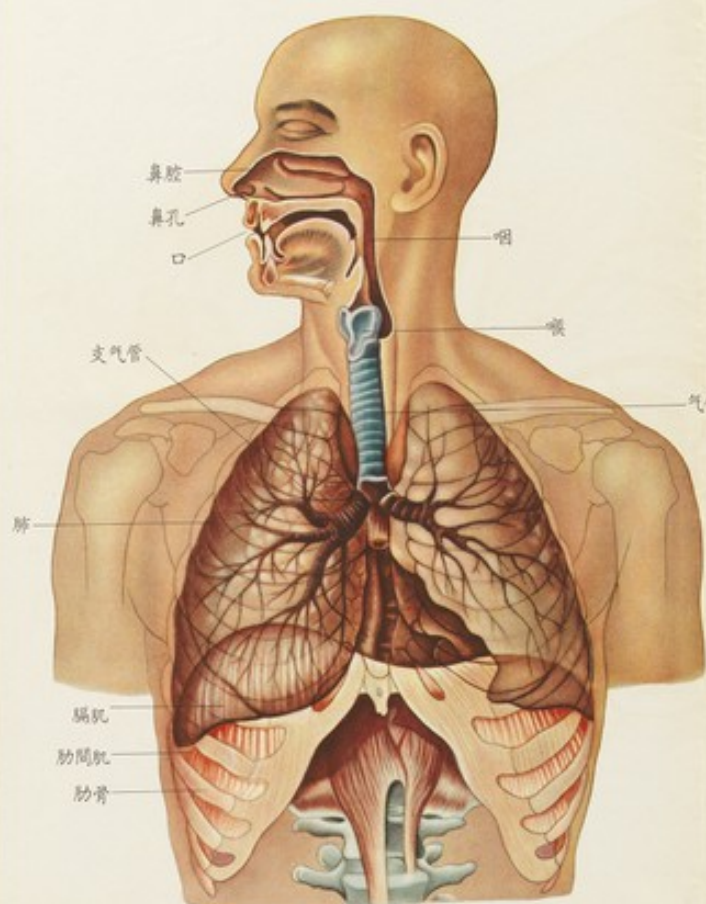
白血球(嗜中性球)吞噬细菌(13)



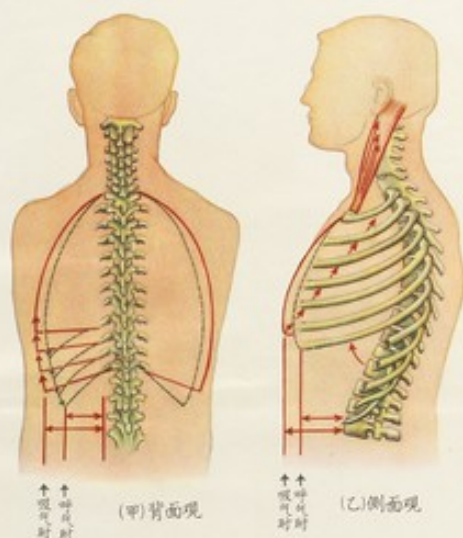
白血球渗出毛细血管(12)



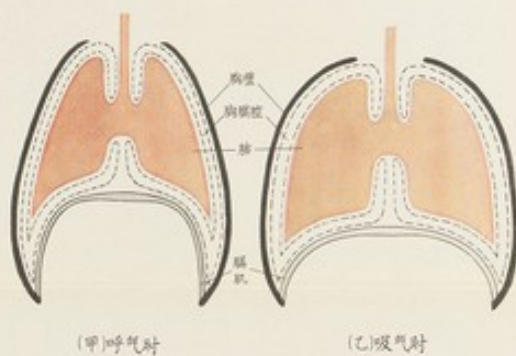
白血球能防御外界微生物侵入人体内(14)



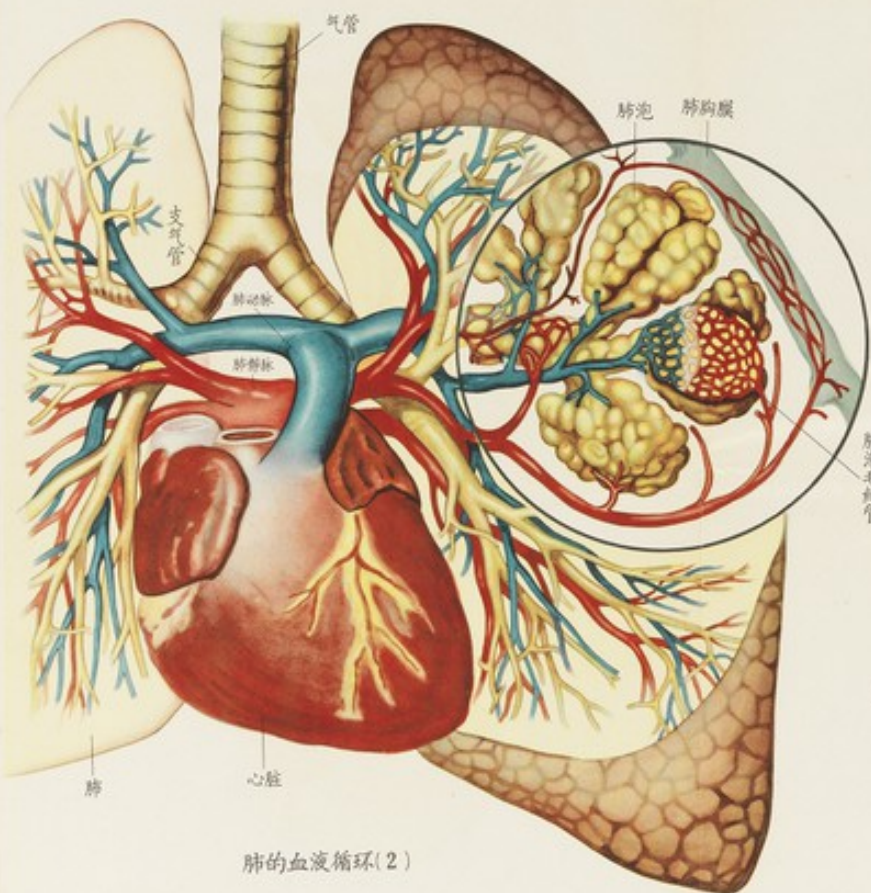
人体呼吸系統模式图(1)



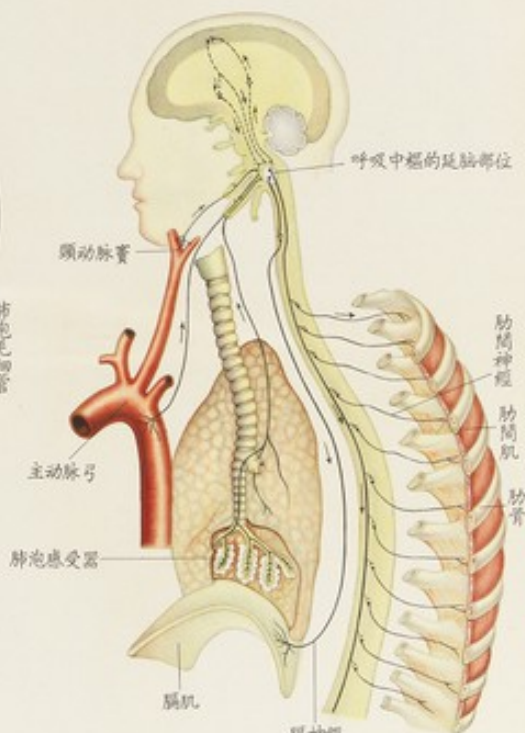
呼吸运动的原理(3)



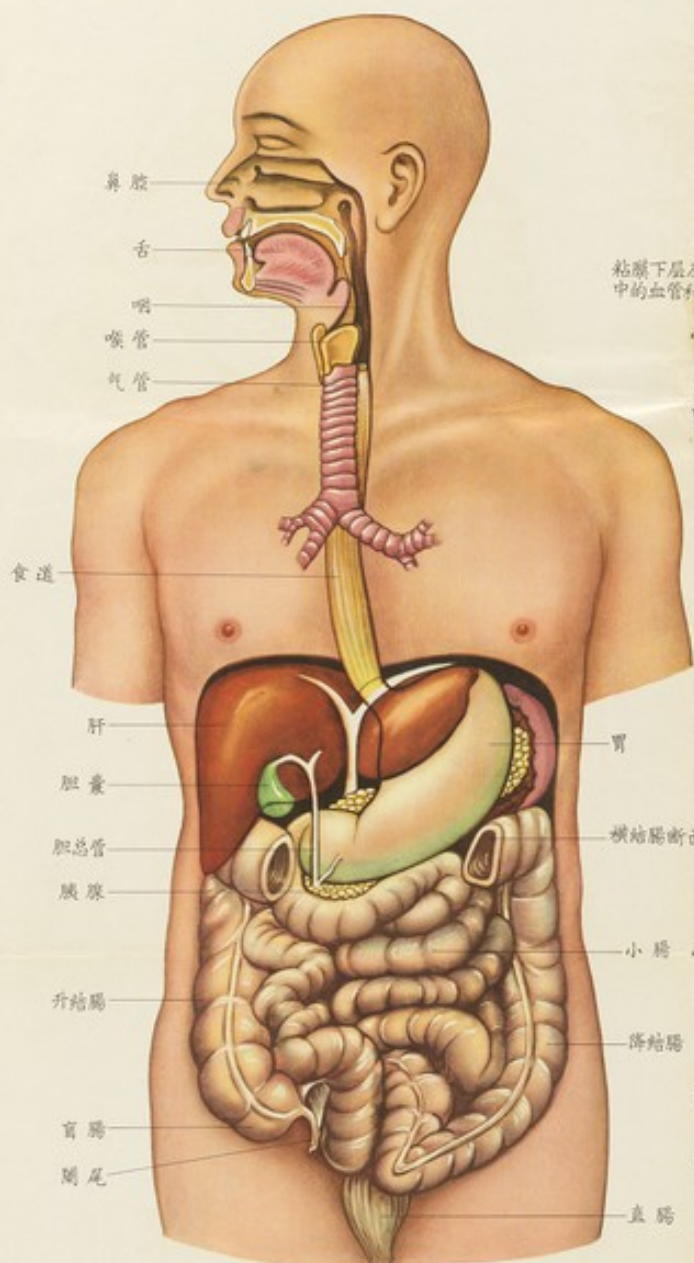
胸廓和肺容积的改变(4)



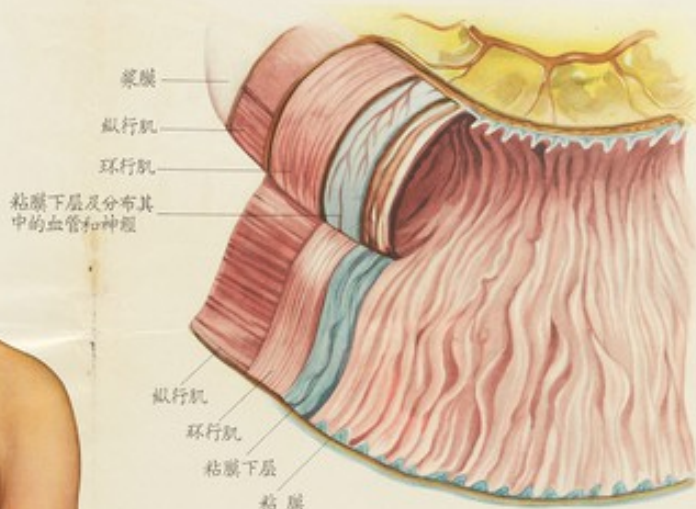
肺的血液循环(2)



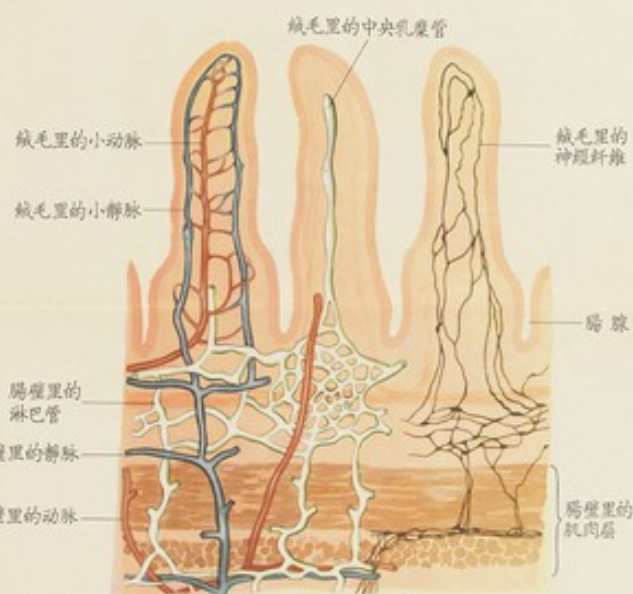
呼吸运动的神经调节(5)



消化系統全圖(1)



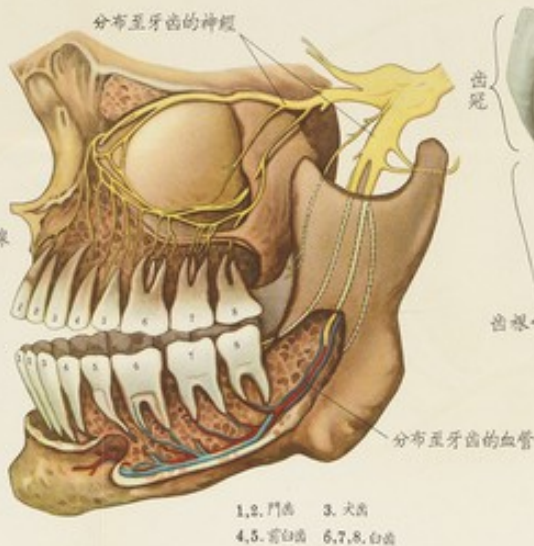
腸的剖面(2)



小腸絨毛(9)



唾液腺(5)



成人牙齒的排列及其血管和神經的分布(4)



牙齒的構造(3)

人唾液收集法(7)

犬唾液收集法(6)



人唾液导管

犬唾液导管

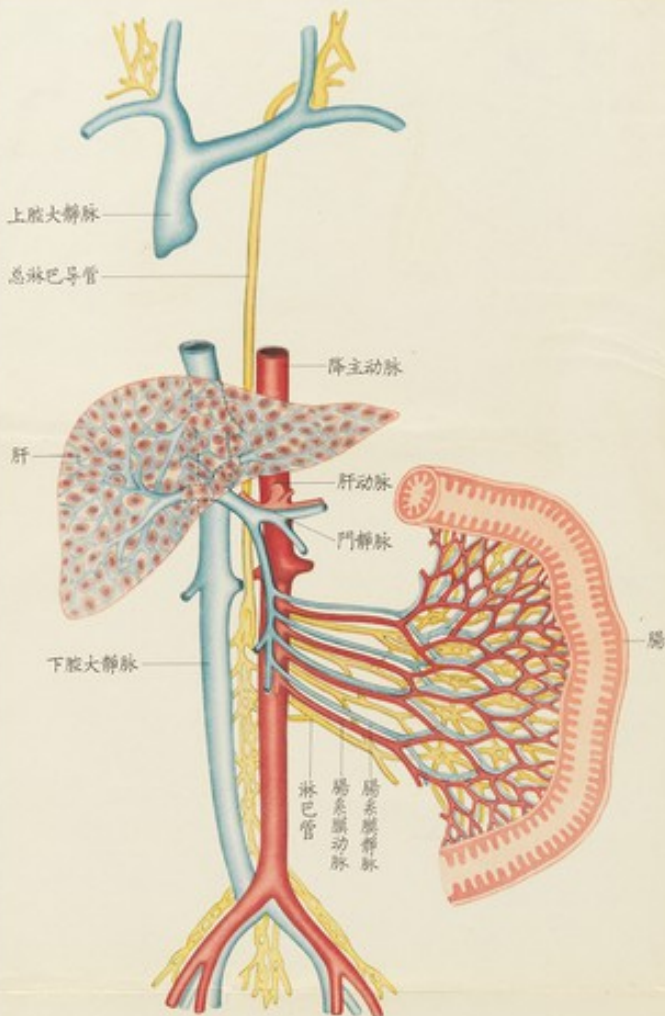


巴甫洛夫研究胃液的实验(8)



假狗

小胃狗

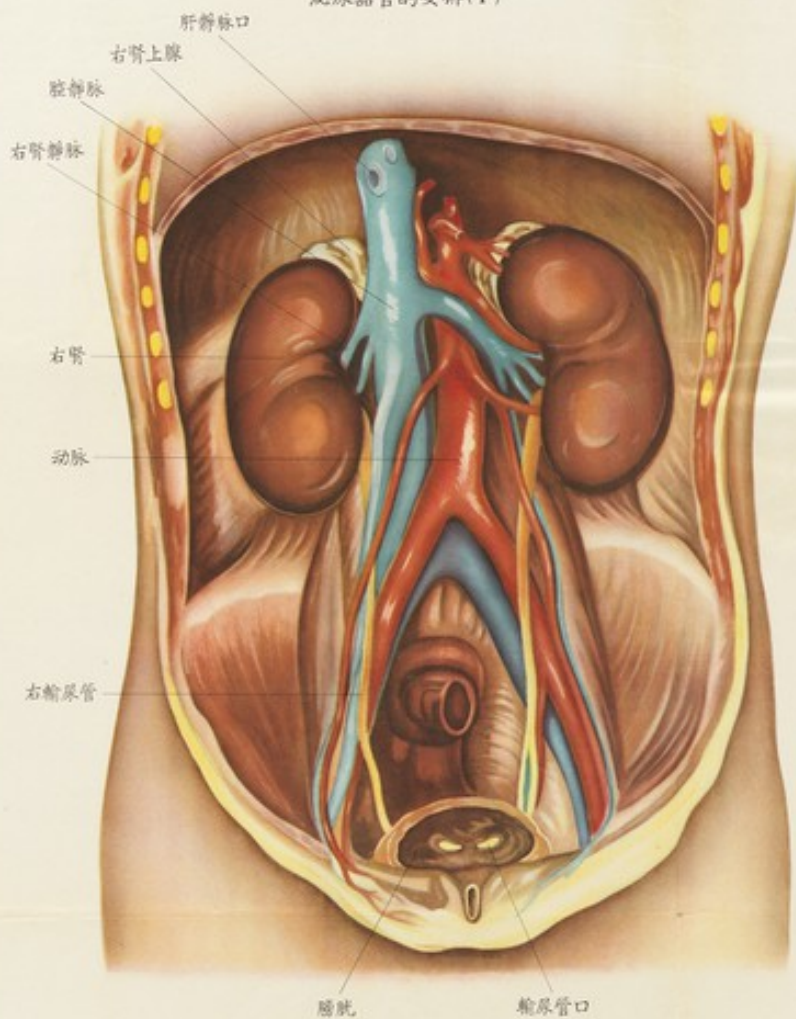


食物的吸收(10)

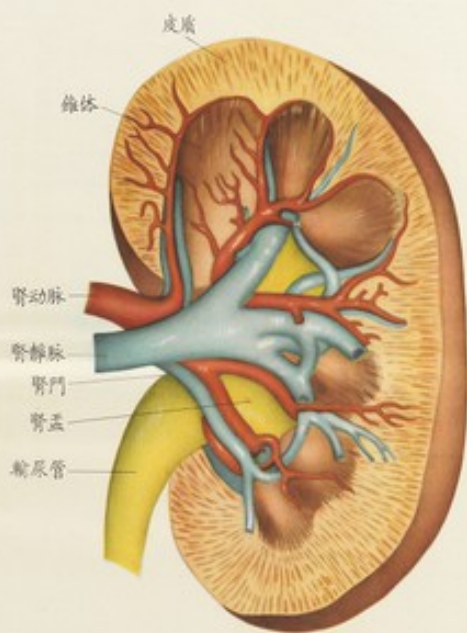


人体营养素的来源(11)

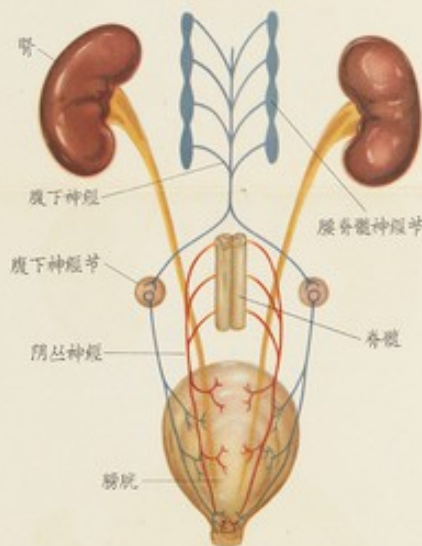
泌尿器官的安排(1)



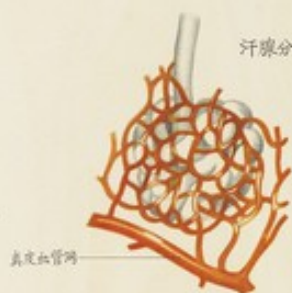
人腎的縱切面(2)



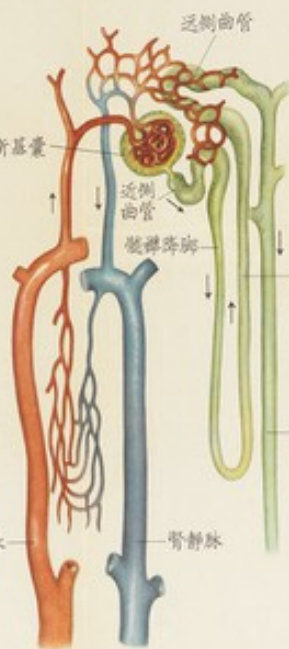
膀胱的神經分布(5)



汗腺分泌部放大



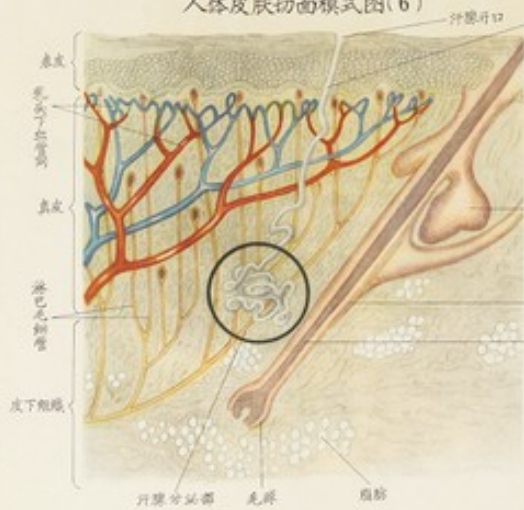
腎的血液供給(3)



腎小體的構造(4)



人體皮膚切面模式圖(6)





脑下垂体对生长的影响(15)



甲. 巨人, 十四岁, 身高 213公分

乙. 正常男子

丙. 矮小病, 二十八岁, 身高 77公分



甲状腺机能低落——粘液性水肿(6)



甲状腺机能过盛——突眼甲状腺肿(7)



割去肾上腺的犬, 厌食、呕吐、四肢无力(12)



割去肾上腺的犬, 注射皮质激素后恢复正常(13)



甲状腺机能低落——呆小病(5)

十九岁的女子

生殖腺对于性别的关系(18)



正常雄鸡



阉割雄鸡



移植卵巢后的阉割雄鸡



正常雌鸡



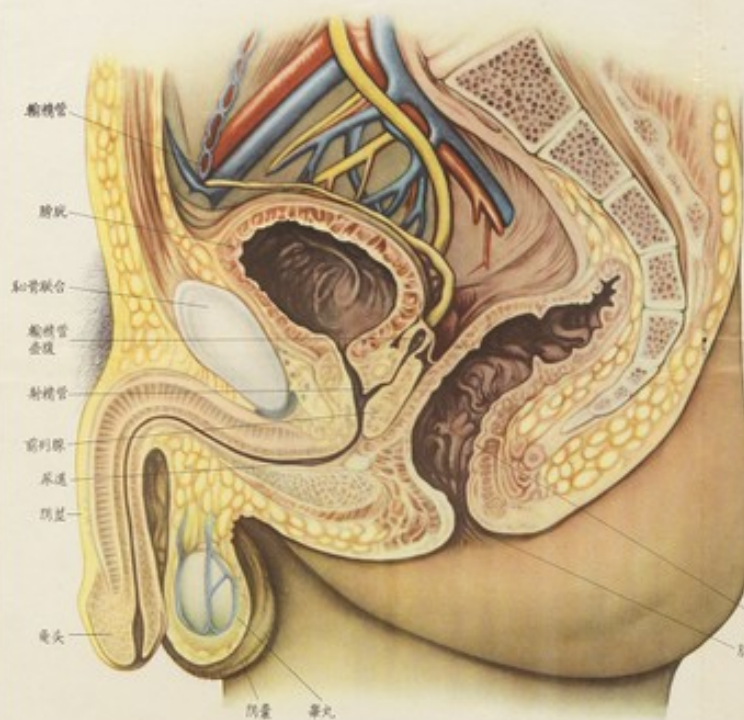
阉割雌鸡



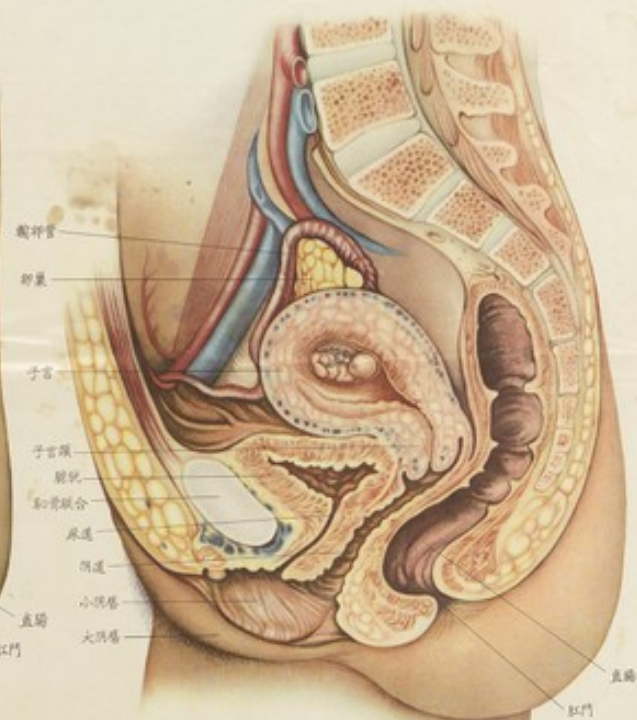
移植睾丸后的阉割雌鸡



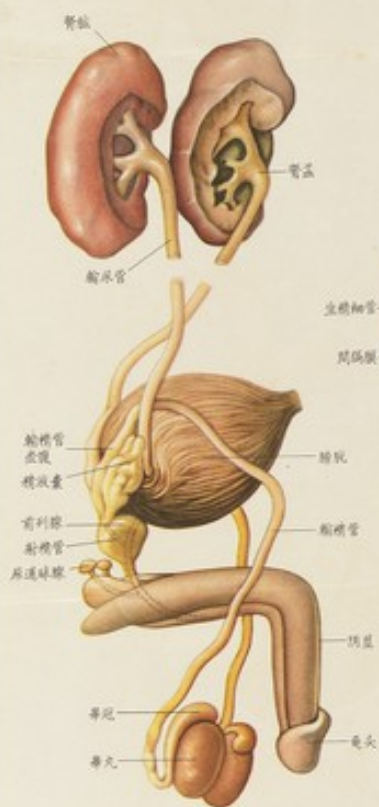
甲状腺肿(4)



男子盆腔矢狀剖面—示泌尿生殖道和睪丸(1)



女子盆腔矢狀剖面—妊娠初期(5)



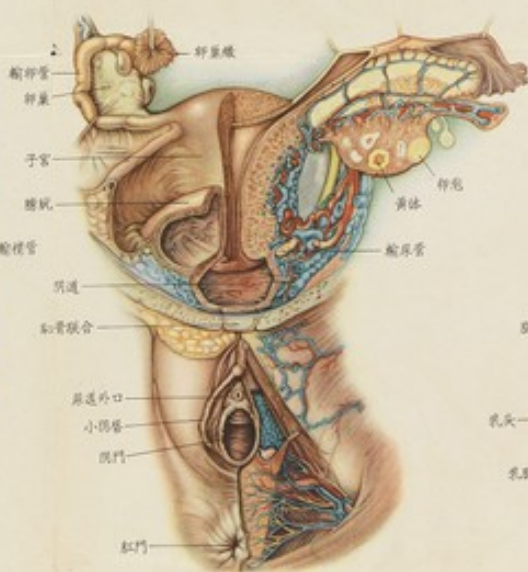
男子的泌尿生殖器官(2)



睪丸切面(3)



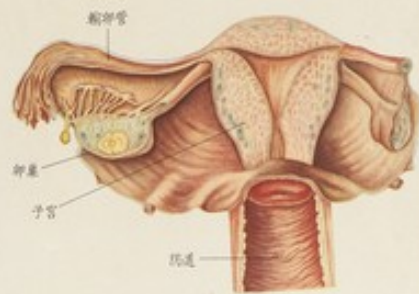
人类的卵細胞和精子(4)



子宮、膀胱和外生殖器—半部是剖面，示內部結構(6)



人乳房的解剖(8)



女性生殖器的剖面(7)