

**Twelve photographs of people living with HIV representing an advertisement for early treatment of HIV by the San Francisco AIDS Foundation. Lithograph after Annie Leibovitz, 1993.**

**Contributors**

Leibovitz, Annie, 1949-  
San Francisco AIDS Foundation.

**Publication/Creation**

San Francisco : San Francisco AIDS Foundation, 1993 (U.S.A. : Impact AIDS)

**Persistent URL**

<https://wellcomecollection.org/works/qyudx5yp>

**License and attribution**

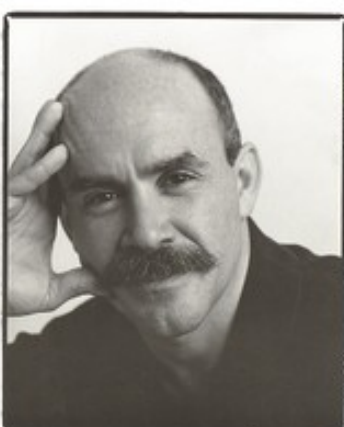
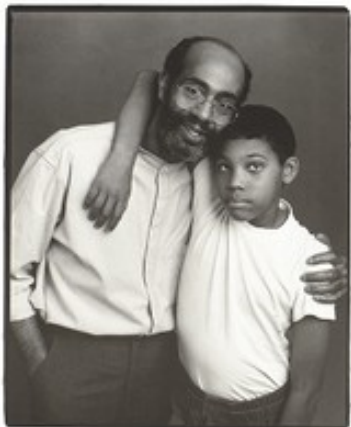
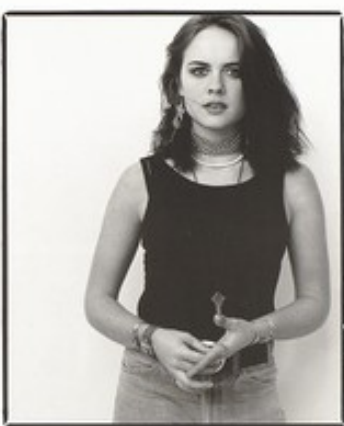
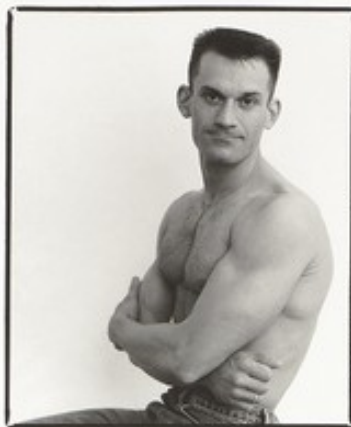
You have permission to make copies of this work under a Creative Commons, Attribution, Non-commercial license.

Non-commercial use includes private study, academic research, teaching, and other activities that are not primarily intended for, or directed towards, commercial advantage or private monetary compensation. See the Legal Code for further information.

Image source should be attributed as specified in the full catalogue record. If no source is given the image should be attributed to Wellcome Collection.



Wellcome Collection  
183 Euston Road  
London NW1 2BE UK  
T +44 (0)20 7611 8722  
E [library@wellcomecollection.org](mailto:library@wellcomecollection.org)  
<https://wellcomecollection.org>



**Be Here for The Cure. Get Early Treatment for HIV.**

People Living with HIV Photographed by Annie Leibovitz. Design by Earl Office. Funded by foundation, corporate, and individual donations. Distributed by Impact AIDS, 415-961-3397. © San Francisco AIDS Foundation 1995.

