

Two enlarged images of T-cells one infected with HIV by the Frederick Cancer Research and Development Center. Colour lithograph by Nancy Burson and Kunio Nagashima, 1991.

Contributors

National Cancer Institute (U.S.)

Publication/Creation

Frederick [Maryland] : National Cancer Institute, 1991.

Persistent URL

<https://wellcomecollection.org/works/hjnnrg8s>

License and attribution

You have permission to make copies of this work under a Creative Commons, Attribution, Non-commercial license.

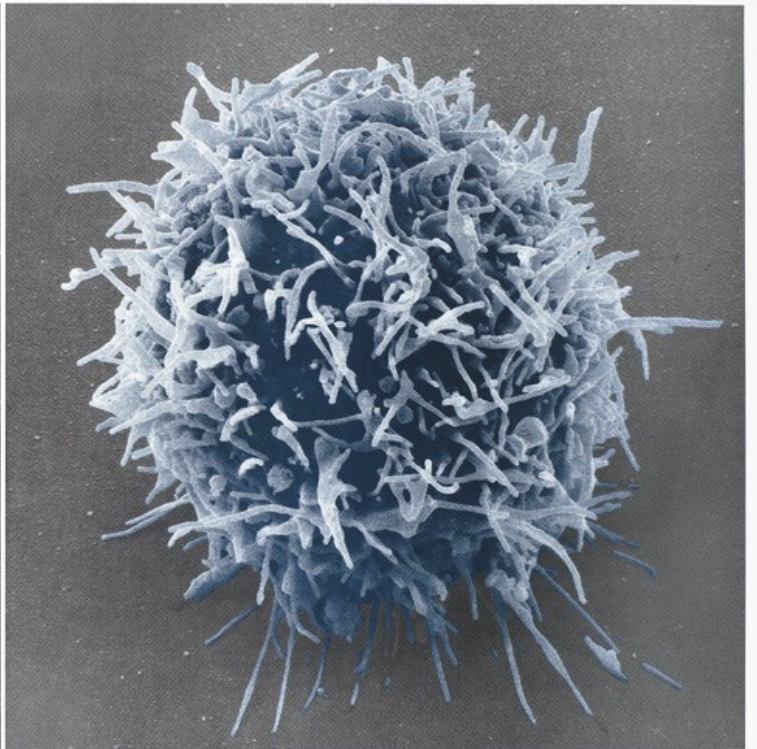
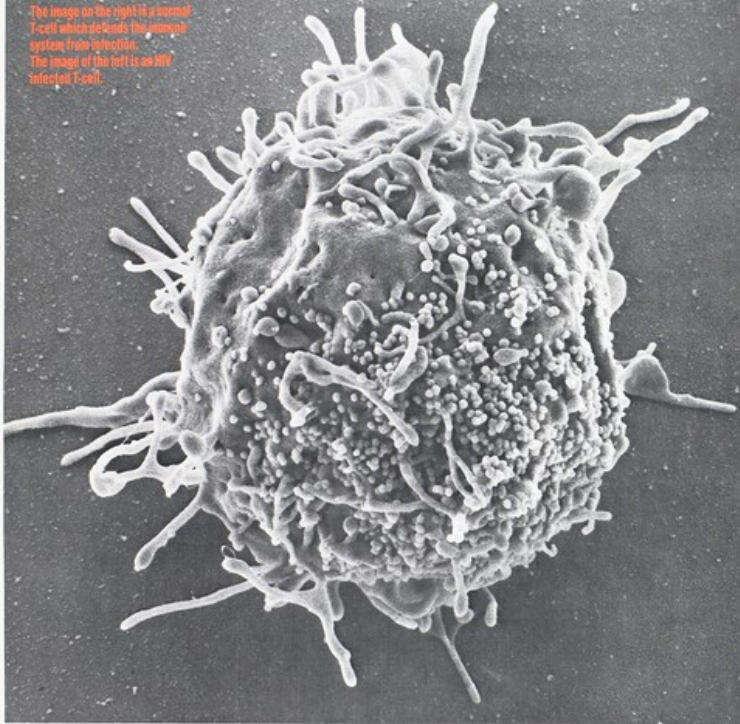
Non-commercial use includes private study, academic research, teaching, and other activities that are not primarily intended for, or directed towards, commercial advantage or private monetary compensation. See the Legal Code for further information.

Image source should be attributed as specified in the full catalogue record. If no source is given the image should be attributed to Wellcome Collection.

**wellcome
collection**

Wellcome Collection
183 Euston Road
London NW1 2BE UK
T +44 (0)20 7611 8722
E library@wellcomecollection.org
<https://wellcomecollection.org>

The image on the right is a normal
T-cell which defends the immune
system from infection.
The image of the left is an HIV
infected T-cell.



VISUALIZE THIS.

Nancy Burson in collaboration with Kunio Nagashima, Program Resources Inc./DyrnCorp at the National Cancer Institute-Frederick Cancer Research and Development Center © copyright 1991. Both images were taken with the S-4000 Scanning Electron Microscope courtesy of Hitachi Scientific Instruments. Art Direction by Vincent Gagliostro. Made possible by a grant from Creative Time Inc.