

'Panopepton' : the pure nutritious substance of beef and wheat in perfect solution / Fairchild Bros. & Foster.

Contributors

Fairchild Bros. & Foster.
Burroughs Wellcome Company.

Publication/Creation

London : Fairchild Bros. & Foster : Burroughs Wellcome, 1928.

Persistent URL

<https://wellcomecollection.org/works/g2qyw8pk>

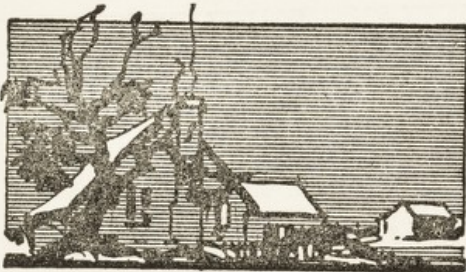
License and attribution

Conditions of use: it is possible this item is protected by copyright and/or related rights. You are free to use this item in any way that is permitted by the copyright and related rights legislation that applies to your use. For other uses you need to obtain permission from the rights-holder(s).



Wellcome Collection
183 Euston Road
London NW1 2BE UK
T +44 (0)20 7611 8722
E library@wellcomecollection.org
<https://wellcomecollection.org>

For the Medical Profession only.



1928-9													
DEC.							JAN.						
S	M	Tu	W	Th	F	S	S	M	Tu	W	Th	F	S
...	1	1	2	3	4	5
2	3	4	5	6	7	8	6	7	8	9	10	11	12
9	10	11	12	13	14	15	13	14	15	16	17	18	19
16	17	18	19	20	21	22	20	21	22	23	24	25	26
23	24	25	26	27	28	29	27	28	29	30	31
30	31

BLOTTER

'PANOPEPTON'

THE PURE NUTRITIOUS SUBSTANCE OF
BEEF AND WHEAT IN PERFECT SOLUTION.

A Nourishing Restorative, Stimulant
Liquid Food of incomparable value for
the nutrition of the sick.

Supplied in 12-oz. bottles.

Manufactured by
FAIRCHILD BROS. & FOSTER
(Inc.) NEW YORK,
65, Holborn Viaduct, LONDON, E.C.1
B. T. FAIRCHILD } NATIONALITY
M. G. FOSTER } U.S.A.

Agents :
BURROUGHS WELLCOME & Co.,
LONDON, SYDNEY
& CAPE TOWN