

**The body of a man with the trunk dissected: two figures showing the lungs after breathing out (left) and after breathing in (right, simulated by inflating the lungs). Coloured lithograph by William Fairland, 1869.**

### **Contributors**

Sibson, F. 1814-1876.

Fairland, William T., 1805-

### **Publication/Creation**

[London] : [John Churchill], [1869] ([London] : [M. & N. Hanhart])

### **Persistent URL**

<https://wellcomecollection.org/works/t9amzx7k>

### **License and attribution**

You have permission to make copies of this work under a Creative Commons, Attribution license.

This licence permits unrestricted use, distribution, and reproduction in any medium, provided the original author and source are credited. See the Legal Code for further information.

Image source should be attributed as specified in the full catalogue record. If no source is given the image should be attributed to Wellcome Collection.

Fig 2

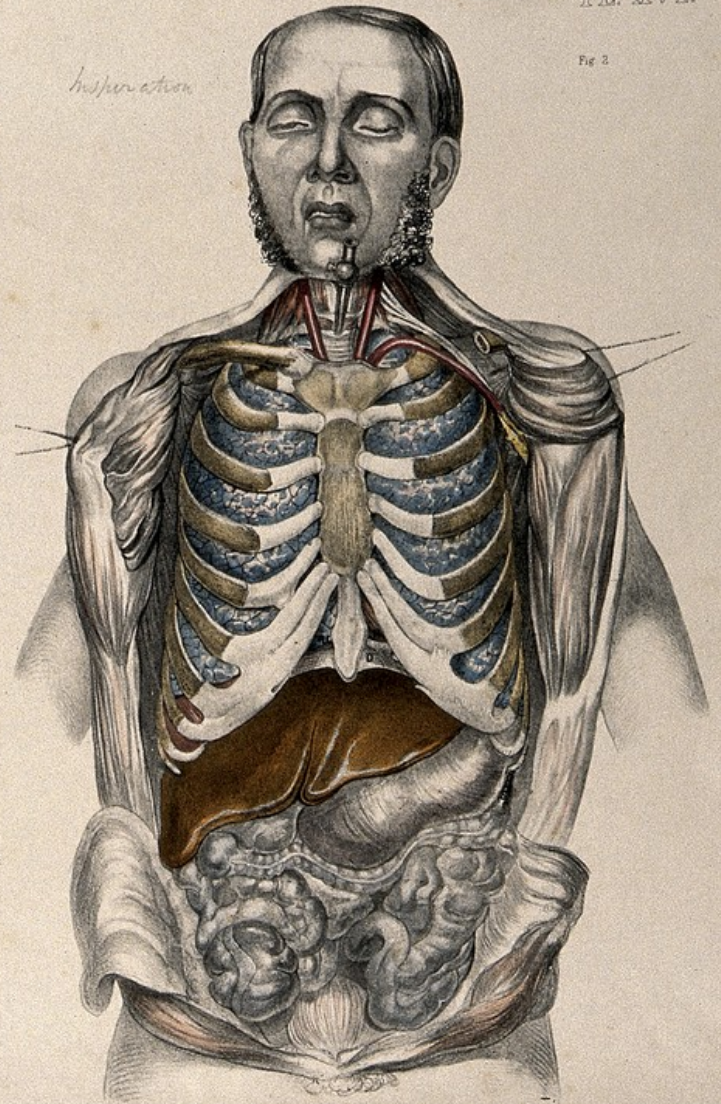


Fig 1

