

**The "Knight" cheese safes exclude flies and dust, prevent shrinkage in weight by evaporation, and necessarily the crumbling which is caused by this evaporation / Peabody & Parks.**

### **Contributors**

Peabody & Parks.

### **Publication/Creation**

Troy, N.Y. : Peabody & Parks, [between 1880 and 1889?]

### **Persistent URL**

<https://wellcomecollection.org/works/jjyf9qa2>

### **License and attribution**

This work has been identified as being free of known restrictions under copyright law, including all related and neighbouring rights and is being made available under the Creative Commons, Public Domain Mark.

You can copy, modify, distribute and perform the work, even for commercial purposes, without asking permission.



Wellcome Collection  
183 Euston Road  
London NW1 2BE UK  
T +44 (0)20 7611 8722  
E [library@wellcomecollection.org](mailto:library@wellcomecollection.org)  
<https://wellcomecollection.org>

**THE "KNIGHT"**

# **CHEESE SAFES**

**EXCLUDE FLIES and DUST,**  
**Prevent SHRINKAGE in weight by EVAPORATION,**  
**and necessarily the CRUMBLING which is**  
**caused by this evaporation.**

---

*Opening back of the counter, there is no "picking off" the profits by the customers.*

*This Cheese Safe will more than pay for itself by these advantages alone in a single season.*

*Use nothing but the "KNIGHT" CHEESE SAFE and you can sell your cheese and make money, where you would lose if your cheese were in any other receptacle.*

---

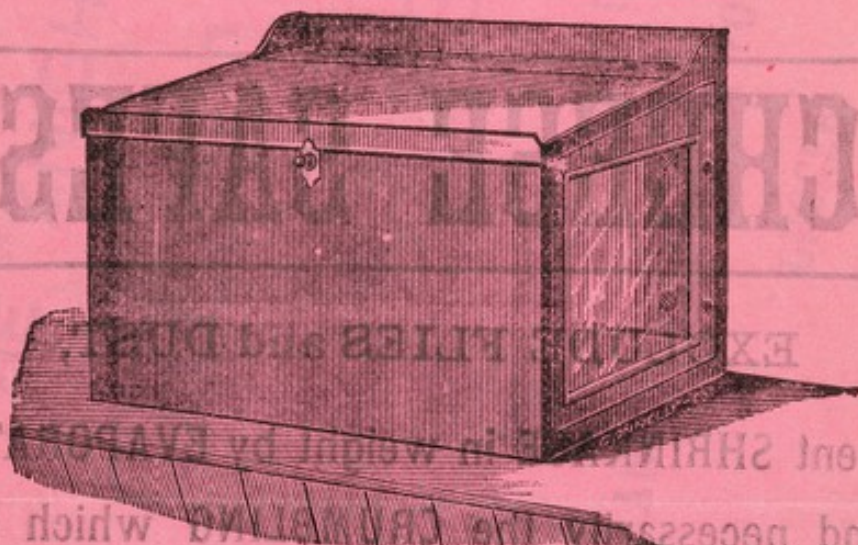
**FOR SALE BY**

## **PEABODY & PARKS**

**TROY, N. Y.**



## THE DESK TOP SAFE.

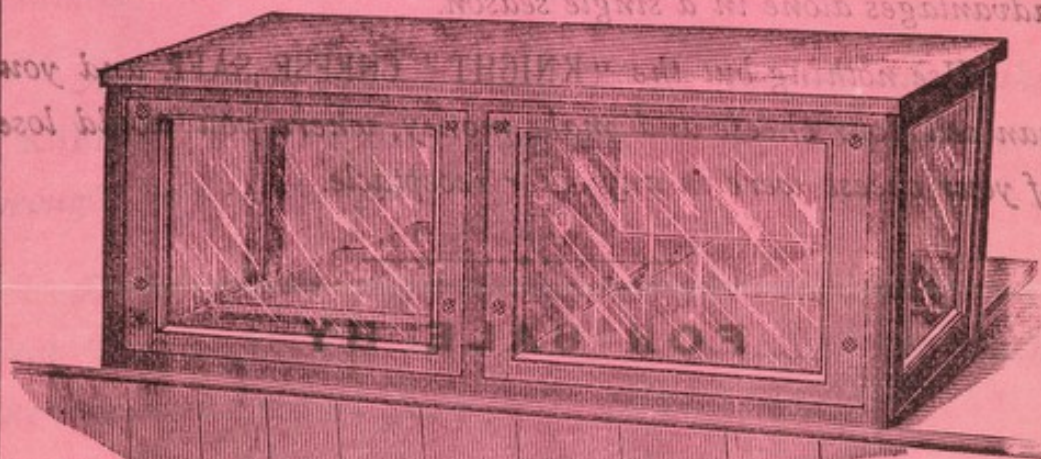


Length .....	24 ins.	Height .....	17 ins.
Width .....	22 "	Glass .....	10x16 "

This Safe is made the same size as the plain top, and is designed to economize space where a desk is required on the counter.

**NET PRICE, - - - \$5.50.**

## THE DOUBLE SAFE.



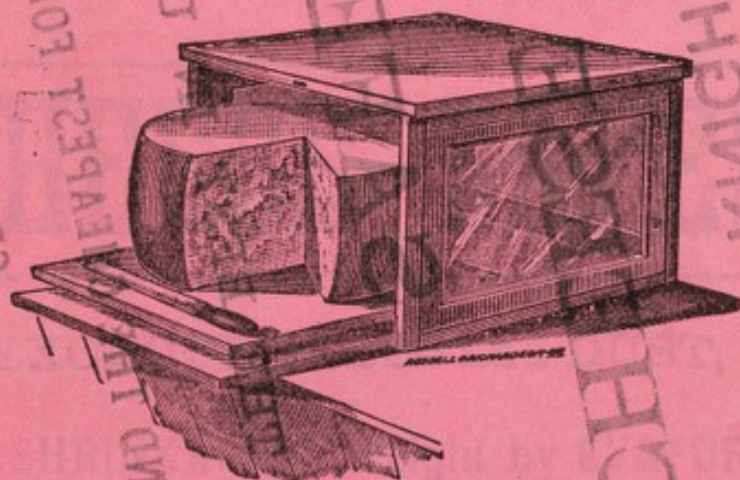
Length .....	44 ins.	Height .....	14½ ins.
Width .....	22 "	Glass .....	10x16 "

This style has two doors and tables, and for some stores is the most desirable. It is capable of supporting several hundred pounds, and a good display of canned goods may be made on top.

**NET PRICE, - - - \$7.50.**



## THE SINGLE SAFE.



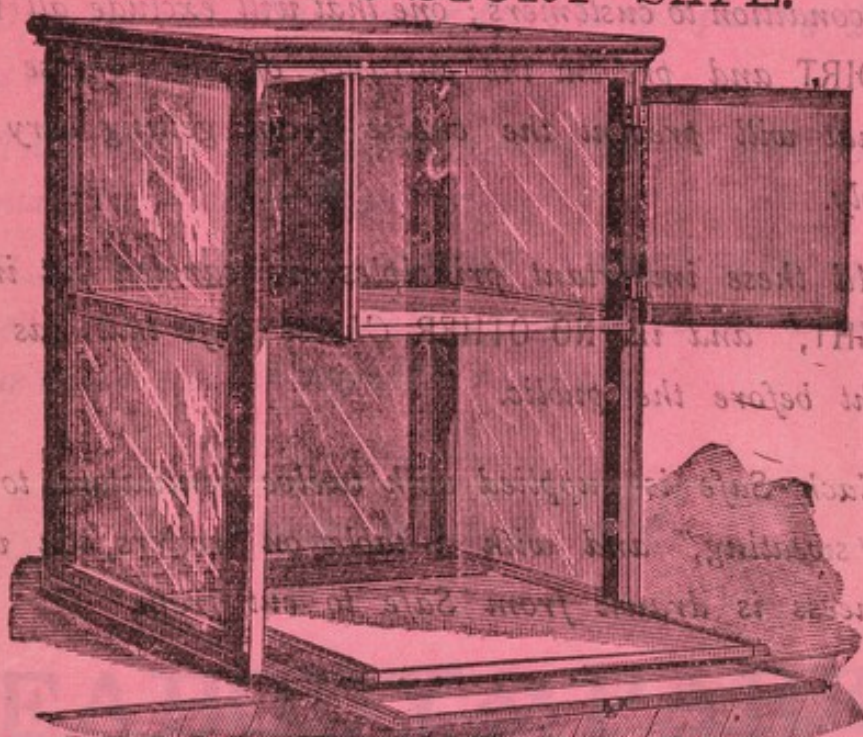
Length.....	24 ins.	Height.....	14 1/2 ins.
Width.....	22 "	Glass	10x16 1/2 "

This Cut represents the Single Plain Top Safe, which is the most desirable kind where but one kind of cheese is cut.

It can be used without any waste of counter room, as other articles, such as wrapping paper, bags, small scales or canned goods, may be placed upon the top.

NET PRICE, - - \$4.75.

## THE TWO-STORY SAFE.



Length.....	24 ins.	Height.....	30 ins.
Width.....	30 "	Glass	10x16 "

This is the very best Safe in use, and is especially adapted to use in large stores in cities, where several kinds of Cheese are cut, and displays the goods to great advantage.

The top compartment is independent of the bottom, and can be used for bread, and the bottom for cheese, combining a bread and cheese safe in one.

NET PRICE, - - \$10.00.



Are now in use, and we guarantee satisfaction to all who may require them in future.

## 5,000 OF THESE SAFES

Each Safe is supplied with twelve ventilators, to prevent "sweating," and with a table on rollers, on which the cheese is drawn from Safe to cut from.

All these important principles are carried out in the "KNIGHT," and in NO OTHER Cheese Safe that has been brought before the public.

Every grocer who uses a Cheese Safe will benefit by getting one that will exhibit his cheese in a WHOLESOME and NEAT condition to customers; one that will exclude all DUST and DIRT and prevent the entrance of the "cheese fly," one that will prevent the cheese from getting dry and crumbly.

THE "KNIGHT"  
CHEESE  
SAFES,  
THE BEST IN  
USE,  
AND THE CHEAPEST FOR THE  
GROCER.