

**Heavy erecting work for rolling mill engraving, Davy & United Engineering Co. Ltd., Park Iron Works, Sheffield: men are shown operating heavy machinery. Photograph, 1957.**

**Publication/Creation**

1957.

**Persistent URL**

<https://wellcomecollection.org/works/qphdappx>

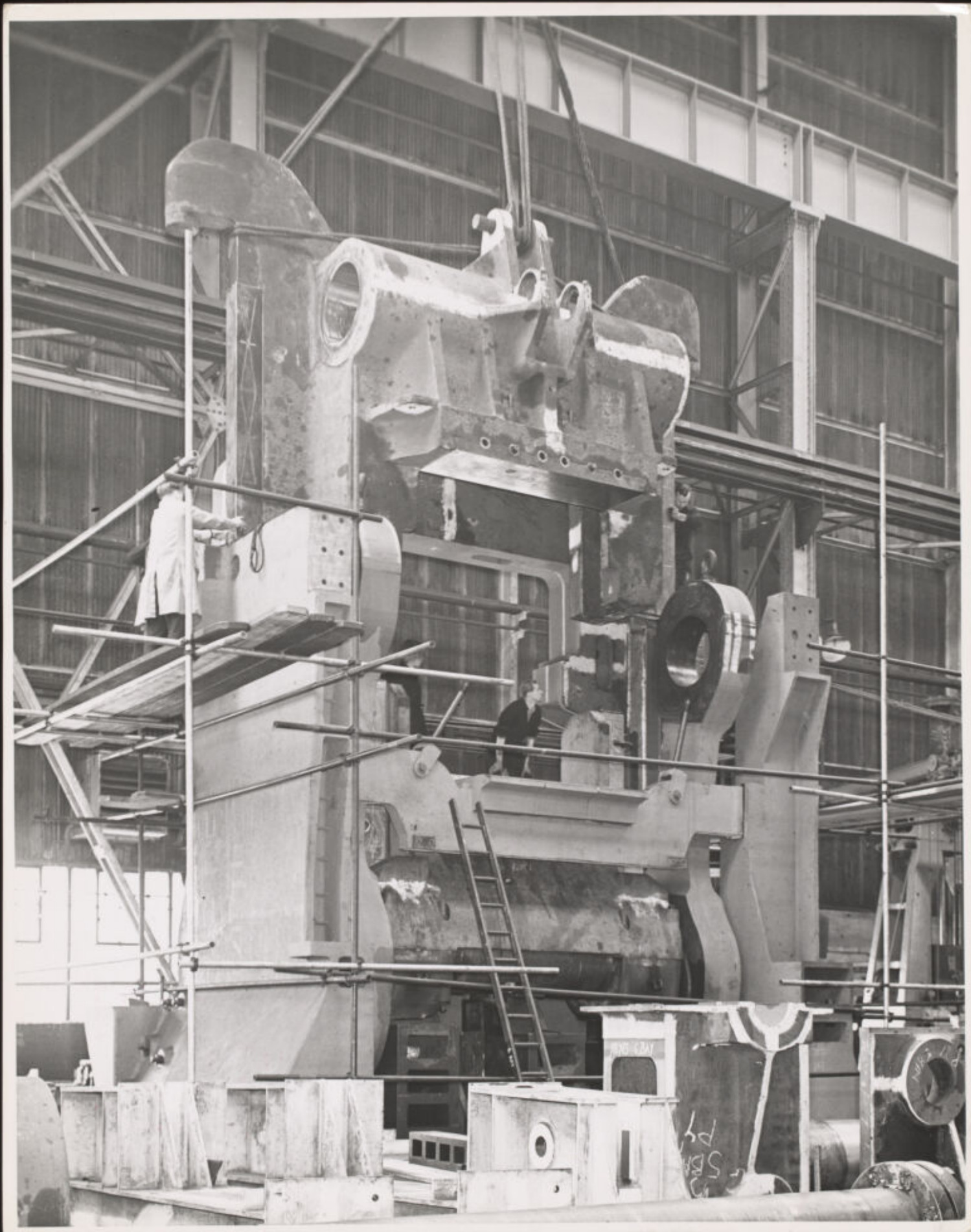
**License and attribution**

This work has been identified as being free of known restrictions under copyright law, including all related and neighbouring rights and is being made available under the Creative Commons, Public Domain Mark.

You can copy, modify, distribute and perform the work, even for commercial purposes, without asking permission.



Wellcome Collection  
183 Euston Road  
London NW1 2BE UK  
T +44 (0)20 7611 8722  
E [library@wellcomecollection.org](mailto:library@wellcomecollection.org)  
<https://wellcomecollection.org>



Engineering shop conditions in the firm of Davy and United Engineering Company, Ltd., Park Iron Works, Sheffield 4. One of a series of fourteen photographs supplied by Mr. F.R. Smith, Publicity Officer, 17th January, 1957. No. 4307. Heavy erection work for rolling mill engraving. The building of a 1350 tons hot bloom and slab shear embodying several single castings weighing around 50 tons each.

582452c

PHO. 13445

FILE PRINT

COPYRIGHT  
OF  
DAVY AND UNITED  
ENGINEERING COMPANY  
LIMITED

4307