

Heavy erecting shop for rolling mill engineering, Davy & United Engineering Co. Ltd., Park Iron Works, Sheffield: men are shown operating heavy machinery. Photograph, 1957.

Publication/Creation

1957.

Persistent URL

<https://wellcomecollection.org/works/zrk8saku>

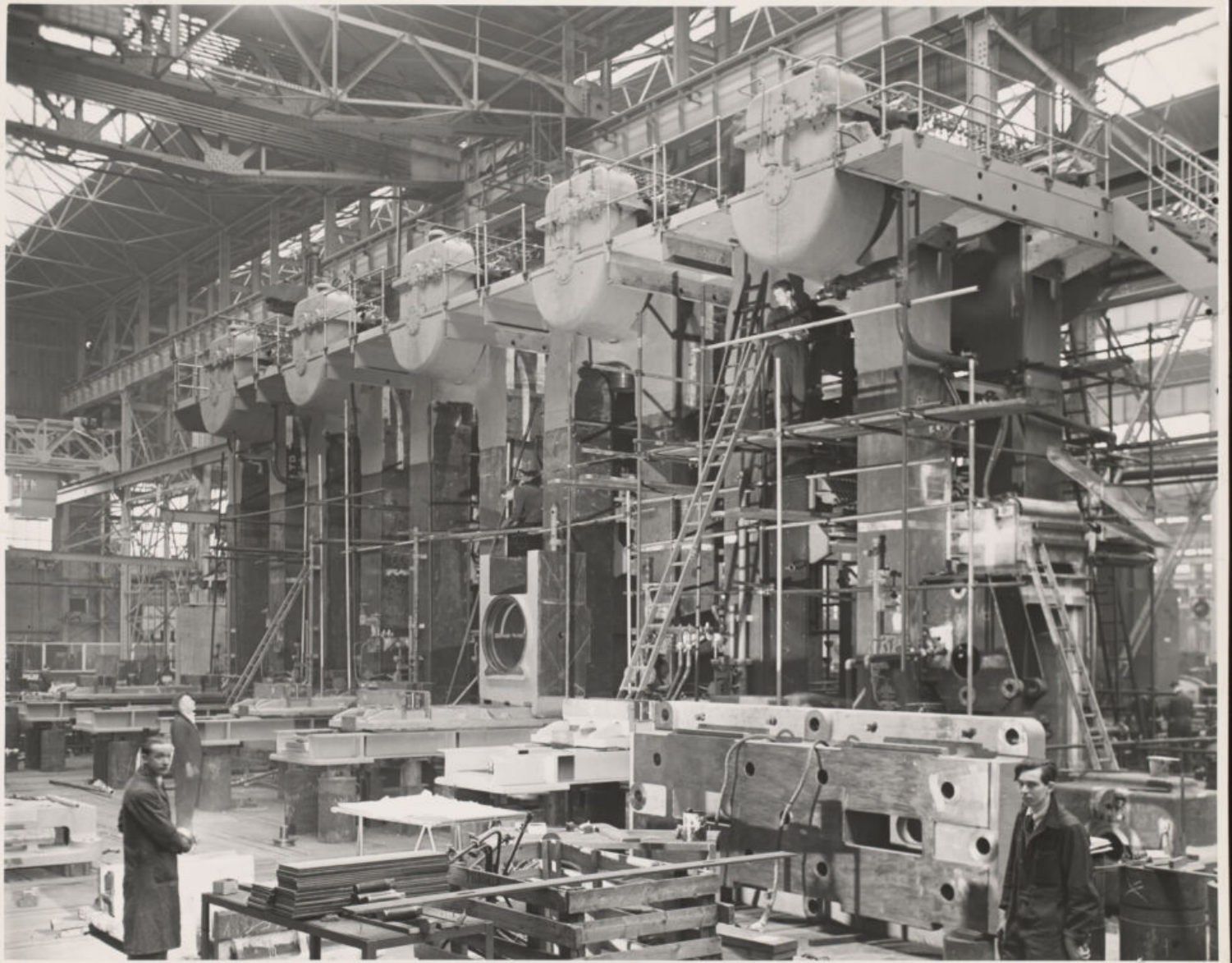
License and attribution

This work has been identified as being free of known restrictions under copyright law, including all related and neighbouring rights and is being made available under the Creative Commons, Public Domain Mark.

You can copy, modify, distribute and perform the work, even for commercial purposes, without asking permission.



Wellcome Collection
183 Euston Road
London NW1 2BE UK
T +44 (0)20 7611 8722
E library@wellcomecollection.org
<https://wellcomecollection.org>



Erection proceeding in the builder's works in Sheffield of a 42" ~~mill~~
5-stand Tandem Cold Strip Mill embodying 100 ton housings. This mill is
now in production in the Ebbw Vale Works of Richard Thomas & Baldwins Ltd
and has been designed to roll steel strip up to 38" wide for triplets
at a speed of 5,000 feet per minute. Motors totalling over 18,000 h.p
are required to drive it.

Engineering shop conditions in the firm of Davy and United Engineering
Company, Ltd., Park Iron Works, Sheffield 4. One of a series of fourteen
photographs supplied by Mr. F.R. Smith, Publicity Officer, 17th January, 1957.
No. 4063. Heavy erection work for rolling mill engineering. The erection
of a 5-stand tandem cold strip mill using ten roll housings each weighing
100 tons.

FILE PRINT

PHO. 13644



582449c