

Gold Medal Flour... : March 1934 / Ross T. Smyth & Co., Ltd.

Contributors

Ross T. Smyth & Co.
Washburn-Crosby Co.

Publication/Creation

Liverpool : Ross T. Smyth & Co., 1934.

Persistent URL

<https://wellcomecollection.org/works/bedpcykx>

License and attribution

Conditions of use: it is possible this item is protected by copyright and/or related rights. You are free to use this item in any way that is permitted by the copyright and related rights legislation that applies to your use. For other uses you need to obtain permission from the rights-holder(s).



Wellcome Collection
183 Euston Road
London NW1 2BE UK
T +44 (0)20 7611 8722
E library@wellcomecollection.org
<https://wellcomecollection.org>

GOLD MEDAL FLOUR

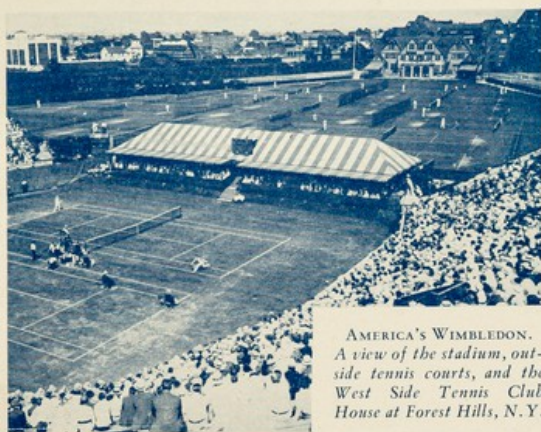


Photo Ed. Levick.

AMERICA'S WIMBLEDON.
A view of the stadium, out-
side tennis courts, and the
West Side Tennis Club
House at Forest Hills, N. Y.

IN the "Bowl" at Forest Hills are played the annual championship tennis games. This year England conquered Australia in the finals, while the American tennis hopefuls viewed the matches from the side lines.

Health, energy and physical endurance are the foundations of a good tennis game. More people derive health, energy and physical endurance from bread than from any other food.

**GOLD MEDAL FLOUR is the
fundamental ingredient
of good bread**

MARCH 1934

S	M	T	W	T	F	S
..	1	2	3
4	5	6	7	8	9	10
11	12	13	14	15	16	17
18	19	20	21	22	23	24
25	26	27	28	29	30	31



ROSS T. SMYTH & CO., LTD.
Liverpool, London, Hull, Bristol, Glasgow, Belfast
Distributors of GOLD MEDAL FLOUR
for the UNITED KINGDOM

MILLED IN CANADA