

Discover the mysteries under your skin : Prof. Gunther von Hagens' Body Worlds : the anatomical exhibition of real human bodies / Prof. Gunther von Hagens' Körperwelten in association with Channel 4.

Contributors

Hagens, Gunther von.
Atlantis Gallery (London, England)
Channel Four (Great Britain)

Publication/Creation

[London] : Body Worlds, [2002]

Persistent URL

<https://wellcomecollection.org/works/wnz95vxz>

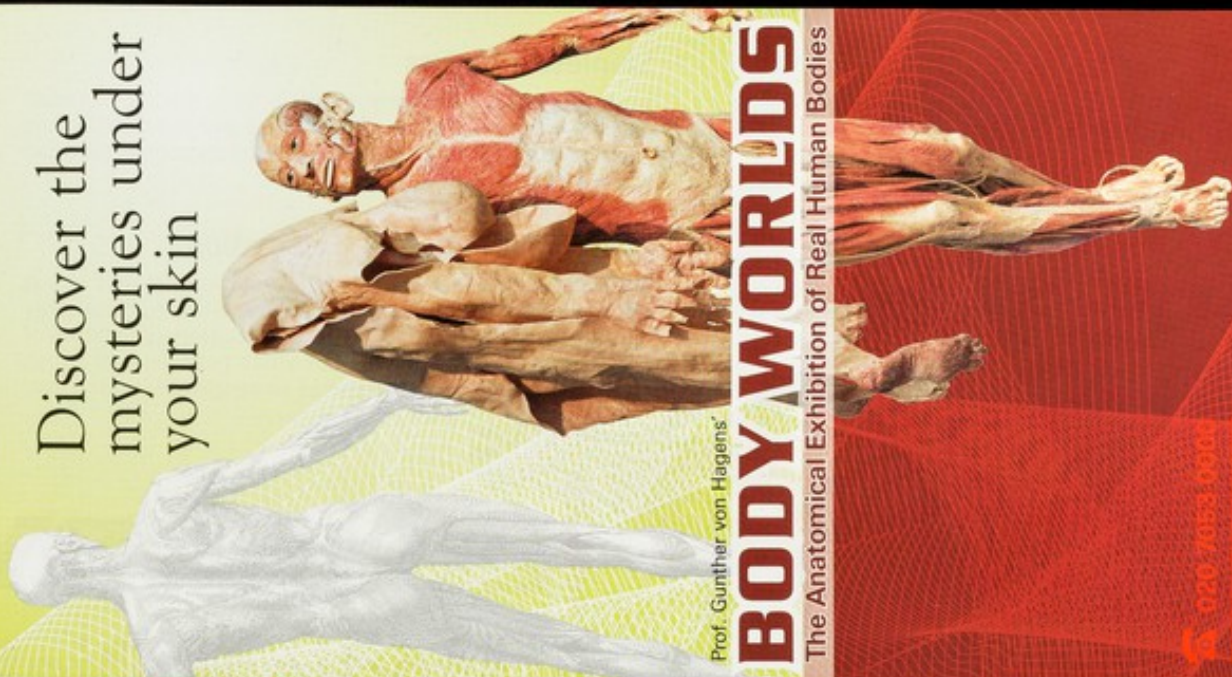
License and attribution

Conditions of use: it is possible this item is protected by copyright and/or related rights. You are free to use this item in any way that is permitted by the copyright and related rights legislation that applies to your use. For other uses you need to obtain permission from the rights-holder(s).

**wellcome
collection**

Wellcome Collection
183 Euston Road
London NW1 2BE UK
T +44 (0)20 7611 8722
E library@wellcomecollection.org
<https://wellcomecollection.org>

Discover the
mysteries under
your skin



Prof. Gunther von Hagens

BODY WORLDS

The Anatomical Exhibition of Real Human Bodies



in association with

020 7653 0908
www.bodyworlds.com

KORPERWELTEN



Bernard Albinus demonstrated the totality of the biological system such as the brain in connection with the meninges and the nerves, which allowed, in turn a better understanding of how the organs function.



It was the anatomist, **André Vesalius** who revolutionised knowledge of the interior of the human body and who is considered the founder of scientific anatomy.



The Russian anatomist, **Pirogoff** succeeded in slicing through the body, to offer a complete view of the body's interior.



Owing to the plastination process, the body can now be revealed in three dimensions.

16th century

17th-18th century

19th century

Today

Liverpool Street

Central / Circle / District / Hammersmith and City / Metropolitan 1st Great Eastern / Anglia no. 8,11,23,26,35,42,47,48,78,133,149,153,214,242, Walking: 7 mins

Aldgate East

District / Hammersmith and City no. 25,67,253, Walking: 5 mins

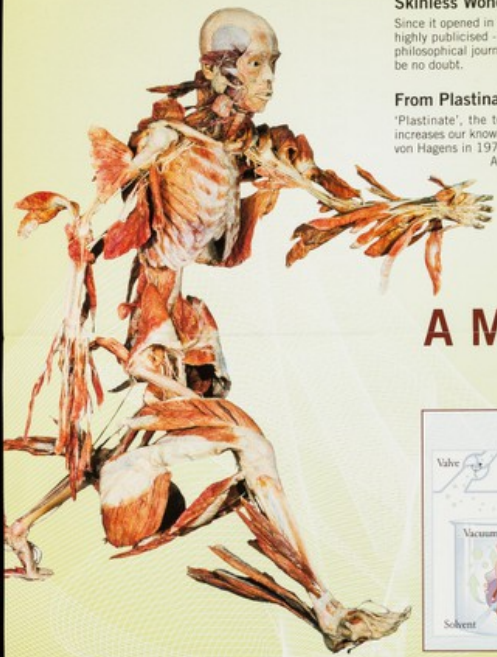
Shoreditch

East London Line (Mon to Fri 7am-10am & 3pm-7pm / Closed Sat / Sun 7am-3pm) no.8 from Bethnal Green Road, Walk: 1 min

Parking

Please use public transport since only limited parking is available.





Skinless Wonders

Since it opened in Germany in 1997, 'Body Worlds' has been highly publicised - in the popular press and in scientific and philosophical journals. Of its widespread attraction there can be no doubt.

From Plastination to Fascination

'Plastinate', the term for this presentation process which increases our knowledge of anatomy, was invented by Gunther von Hagens in 1978 at the Heidelberg University Institute of Anatomy. It has since been recognised as unique and as an excellent teaching tool.

Tour your own body

Walking through the exhibition is akin to leafing through a medical dictionary. More than 200 authentic human plastinates - of whole bodies, individual organs and transparent body slices - provide unparalleled insights into the human body. Among the most striking are 'Plastinate with Skin', a standing figure with exposed muscles with its skin draped over one arm like a raincoat, and the 'Expanded Body' with its muscle and bone pulled away, revealing the internal organs. One of the exhibition's most notorious plastinates is 'The Runner' which exposes the underlying bones and joints with the muscles flying backwards.

Key points of interest are parts of the body which cause so many of us pain and discomfort, for instance the spinal column.

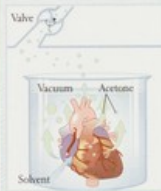
Perhaps the most instructive plastinate is lungs ravaged by tobacco, blackened by tar and soot.

The specimens on display provide a completely new vision of the human body, an extraordinarily sophisticated and fragile machine. The greatest lesson of Body Worlds is the importance of good health. Some visitors leave the exhibition resolved to give up cigarettes or alcohol, eat more healthily and take up regular exercise. All visitors, regardless of age, leave Body Worlds changed. Fascination yields to reflection and, in many cases, to the determination to take better care of one's health and body.

BODY WORLDS

A Medical Dictionary in Three Dimensions

Plastination - The Process



1. The organs are placed in a cold solvent like acetone, first the water and then the fat in the tissue is gradually replaced.
2. Once the water and fat are removed, the organ is placed in a plastic solution. The solvent is then brought to boil in a vacuum and continuously sucked away.
3. This causes a volume deficit in the organ which allows the plastic to gradually permeate every cell.
4. The organ is then hardened using gas, light or heat depending on which plastic was used in the first place.

The plastination process is a very slow and labour intensive process which takes days and sometimes weeks (the average labour input is 1500 hours), but it ensures all the tissue structures are retained.

Gunther von Hagens (57)
Inventor of the plastination process

Artist or scientist??

"I am a scientist who has developed a unique way of preserving the human body so that we can learn more about ourselves. I see myself in the tradition of the artists and scientists of the Renaissance like Leonardo, Vesalius and Dürer. They embodied the last time when art and anatomical science were indistinct and the beauty beneath the skin of the human body was celebrated. I define what I do as the aesthetic-instructive presentation of the interior of the human body. Science and learning are primarily what motivate me. I believe I am resurrecting an age-old fascination with the beauty of the human body, one that has become trivialised by modern associations of the body's interior with death, mutilation, crime and horror."



3rd edition, June 2002



The Marvel of Human Body

Breath by breath...

The lung consists of a dense network of tiny, densely clustered alveoli where the transfer of gases takes place. When laid out flat, they would cover an area of approx. 100m². Cigarette smoke is hazardous for the alveoli. Smoking twenty cigarettes a day means that every year 150ml of tar (one coffee cup) is deposited on the lungs, shortening life by an average of five years.

The body electric...

A fine network of nerve fibres stretches from the head to the toes, monitoring and regulating all bodily functions. They transmit information in the form of weak electric signals. If the brain's blood supply is interrupted for only ten seconds, a person lapses into unconsciousness.



Beat by beat...

The cardiovascular system distributes oxygen, nutrients and hormones to the organs, and is responsible for the removal of waste products. The 'roadway' network of blood vessels is extraordinarily dense. If all of the blood vessels were laid end to end, they would go around the equator twice.

Strong stuff...

With more than 200 bones and 100 moveable joints, the skeleton is the body's internal framework, providing it with stability, support and mobility. Due to its special structure, the skeleton is stronger than reinforced concrete, although it weighs only a fifth as much.



Facts & Figures

More than 8 million people have already visited the exhibition on its tours through Germany, Japan, Austria, Switzerland and Belgium.

35% of all visitors are pupils or students.

Up to 60 schools visit the exhibition in each city per day.

In Berlin, the exhibition remained open around the clock during the last week of its tour in the German capital.

95% of the visitors rate the exhibition 'good' and 80% leave intending to take better care of their bodies.

Exhibition specimens come from people who agreed to donate their bodies for the use of medical science, specifically for the purpose of being plastinated for educational purposes.

SCHOOL TEACHING MATERIALS can be ordered free of charge

The materials include an exhibition video, a 100 page guide to the exhibition, posters and leaflets.

You can order them by emailing exhibition@plastination.com.



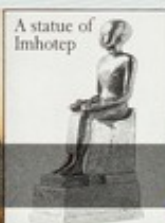
Anatomy Through Time

The Greeks established the first medical schools. Anatomy was practised at this time on animal cadavers. The first human dissections took place at the Medical School of Alexandria, in Egypt, around 4000 BC. The Ancient Egyptian civilisation boasted a wealthy society with a comparatively advanced medical system which combined practical remedies and supernatural treatments. **Imhotep**, a revered Egyptian doctor who lived around 2600 BC was later deified.



Claude Galen dissected animals, particularly pigs. Galen was a Greek doctor who studied in Egypt, returning to Greece in 157AD where he was appointed physician to the gladiators. This was an ideal post to practise medicine due to the variety and plenty of the injuries he encountered. From his observations he drew significant conclusions about the functions of the human body, some of which were ultimately proved inaccurate. However, his ideas dominated the medical world for more than 1300 years.

Leonardo da Vinci produced the most realistic anatomical sketches of the dissected human body.



- 400 BC

2nd century

15th century

BODY WORLDS is at

Atlantis Gallery · The Old Truman Brewery · 146 Brick Lane
London E1 6QL · United Kingdom · Phone: 020 7053 0000
Fax: 020 7053 0020 · E-Mail: exhibition@plastination.com
Internet: www.bodyworlds.com

Opening Hours

23rd March – 29 September 2002: Open daily including
Sundays and Bank Holidays from 9am to 9pm (last admission).

Ticket sale

Tickets can be obtained from the exhibition's box office or can be purchased in advance at www.bodyworlds.com (plus booking fee). Click on our 'Online Ticketshop' **TICKETMACHINE** and print out your ticket from your computer. You can find hourly updates on entry times to the exhibition on our homepage www.bodyworlds.com

Tickets

£10

Single persons

£8

Concessions: Trainees and students up to 30, pensioners, disabled visitors with a companion, groups (minimum 10)

£6

Schoolchildren and students under 18

Free admission for children under 6

School classes & groups (minimum 20)

We strongly recommend pre-booking tickets from the box office or from our online ticket shop. To book tickets please call 020 7053 0010 or alternatively email exhibition@plastination.com stating the date, time and number of visitors. For both online and phone bookings, a non-refundable service charge of £9 for school groups and £12 for other groups will be made.

BODY WORLDS reserve the right to vary admission prices at any time, without prior notice.