

Nature offers a model of perfect integration / Perceptive Biosystems (UK) Ltd.

Contributors

Perceptive Biosystems (UK)

Publication/Creation

Hertford : Perceptive Biosystems (UK), 1997.

Persistent URL

<https://wellcomecollection.org/works/xxrefvfz>

License and attribution

Conditions of use: it is possible this item is protected by copyright and/or related rights. You are free to use this item in any way that is permitted by the copyright and related rights legislation that applies to your use. For other uses you need to obtain permission from the rights-holder(s).

**wellcome
collection**

Wellcome Collection
183 Euston Road
London NW1 2BE UK
T +44 (0)20 7611 8722
E library@wellcomecollection.org
<https://wellcomecollection.org>

**PerSeptive Biosystems
Advances It in Your Lab**

It's Simply Natural

Make the logical connection for streamlining your research. Choose technologies designed to easily link purification, analysis, and characterisation. Intuitive unity for exceptional results. All from PerSeptive Biosystems.



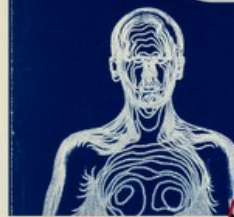
+44 1992 5071 00
+44 1992 5538 58 (fax)

<http://www.pbio.com>



PerSeptive Biosystems

**Nature Offers
a Model of
Perfect Integration**



PerSeptive

PerSeptive Biosystems

PerSeptive Biosystems (UK) Ltd.
3 Harford Court
Froxborough Business Park
Froxborough
Lincoln LN11 3JW
UNITED KINGDOM

Mr. Stephen Lowther
Library
Wellcome Institute
183 Euston Road
London
NW1 2EE
United Kingdom



18/6/97

Advance Your Integrated Capabilities

Perfusion Chromatography® and Biospectrometry™



VISION™ Workstation
The first chromatography system to integrate purification and analysis. Accelerate methods development as never before. Advanced robotics automatically reinject collected fractions onto your analytical column.



INTEGRAL™ Multidimensional Biospecific HPLC System
Speed discovery and characterisation of proteins using biospecific, multidimensional LC. Accurate peptide mapping in an hour and easy interface for LC/MS.



Unprecedented Mass Accuracy and Resolution

Introducing Mariner™ Biospectrometry Workstation
Quantitative LC/MS analysis of biomolecular components from complex mixtures with unprecedented mass accuracy (determination = \pm 10 ppm) and resolution (>5000) with wide mass range and fast scanning, all in a benchtop unit. Define exact mass values for determination of combinatorial chemistry, digest fragments and more.

Advance Your Knowledge at HPLC '97 in Birmingham, England

Feature PerSeptive Biosystems Presentations

High-Speed Perfusion Chromatography Technology
(2 posters)

Accelerated Separations Method Development Through Automation
(3 posters)

Rapid Protein/Peptide Analysis and Characterisation
(2 posters)

Integrated LC/LC and LC/MS Strategies for Lead Compound Identification and Characterisation
(1 oral, 2 posters)

Novel Applications for Capillary Electrophoresis
(1 poster)

Seminar
"Integrating New Technologies to Enhance Protein Purification and Characterisation"

Advance Directly to PerSeptive Biosystems

For more information on the technologies detailed in this mailer, complete and fax back this card to PerSeptive Biosystems at +44 1992 5538 58.

YES, I am interested in receiving information on:

- VISION™ Workstation**
- Automating Purification and Analytical Methods Development
 - Eliminating the Analysis Bottleneck
- INTEGRAL™ Multidimensional Chromatography**
- Peptide and Disulfide Mapping
 - Analysis of Low pmole samples
 - Sample Prep for MS Analysis
 - Screening of Natural Products and Libraries
 - Automated Protein Gel Extractions
- Mariner™ Biospectrometry™ Workstation**
- Trace Biomolecule Detection
 - Combinatorial Chemistry Analysis
 - Digest Fragment Analysis
 - Small Molecule Analysis

PLEASE PRINT:

NAME _____
TITLE _____
COMPANY _____
DEPARTMENT _____
STREET ADDRESS _____
CITY _____ COUNTRY _____
POST CODE _____
PHONE (COUNTRY CODE) _____ EXT. _____
E-MAIL _____

Celebrate new ideas for integration. Visit stands #16 and #27 at HPLC '97 and see how PerSeptive Biosystems technologies can speed your research. Bring this card on Wednesday, June 25, and join in the festivities at a champagne reception to introduce the Mariner. We'll thank you by entering your name in the drawing for a Mariner Brass Clock (a £125.00 value).

+44 1992 5071 00
+44 1992 5538 58 (fax)

<http://www.pbio.com>

Perfusion Chromatography is a registered trademark and Biospectrometry, VISION, INTEGRAL, and Mariner are trademarks of PerSeptive Biosystems, Inc.
© 1997 PerSeptive Biosystems, Inc.