

Product portfolio : data analysis, graphics, statistics, curve fitting, data measurement, image analysis / Jandel Scientific.

Contributors

Jandel Scientific (Firm)

Publication/Creation

Erkrath : Jandel Scientific, [1993]

Persistent URL

<https://wellcomecollection.org/works/hqtmfduq>

License and attribution

Conditions of use: it is possible this item is protected by copyright and/or related rights. You are free to use this item in any way that is permitted by the copyright and related rights legislation that applies to your use. For other uses you need to obtain permission from the rights-holder(s).



Wellcome Collection
183 Euston Road
London NW1 2BE UK
T +44 (0)20 7611 8722
E library@wellcomecollection.org
<https://wellcomecollection.org>

Jandel
SCIENTIFIC



● **European Headquarters**

Data Analysis
Graphics
Statistics
Curve Fitting
Data Measurement
Image Analysis

Product Portfolio

SigmaPlot

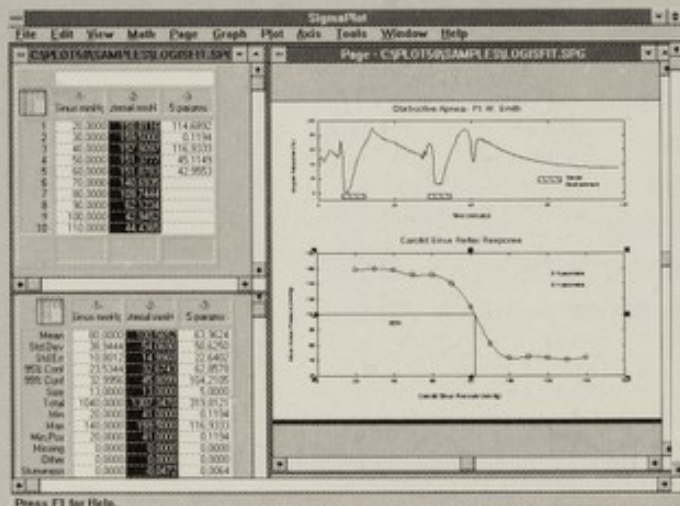
Scientific Graphing Software

■ Over 30,000 scientists and engineers have made SigmaPlot the graphing package of choice for creating outstanding publication-quality scientific charts and graphs. SigmaPlot's comprehensive features meet the specialized needs of scientists and engineers. Included are error bars, regression lines, confidence intervals, axis breaks, specialty axes and much more.

■ The huge data worksheet handles up to a billion data values and accepts data from different file types. A built-in curve fitter fits linear or non-linear equations to data. Create and modify data with the powerful transform language.

■ SigmaPlot was designed for intuitive use, with mouse support, novice prompting and more. Even intricate page layouts are a snap. Output to plotters, printers, slidemakers or export to word processors and desktop publishers (Microsoft Word, PageMaker, etc.) for incorporating within documents.

Operating System: Macintosh, DOS, Windows



SigmaStat

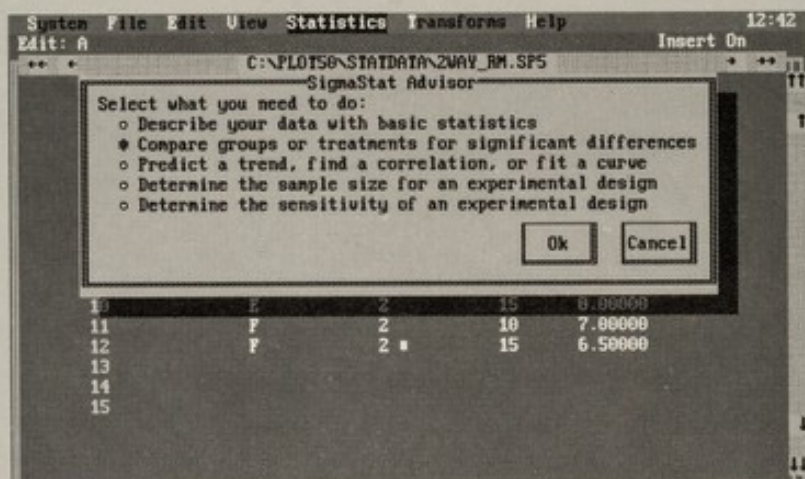
Statistical Software

■ SigmaStat computes statistics researchers need to analyze real world experiments (including t-test, analysis of variance, correlation, rates and proportions, non-parametric methods, regressions, power and sample size).

■ SigmaStat is the ideal statistics program for non-statisticians as well as statistical experts. Unlike most other statistical packages, SigmaStat's procedures are highly automated, requiring little statistical knowledge. An 'Advise' feature and automatic assumption checking assure selection of the most appropriate test for certain data. Detailed log reports are automatically created and may be edited within the program and output directly to a printer or text file.

■ A 'hot key' within SigmaStat takes the user directly to SigmaPlot, where a graph is created from the test results. SigmaStat is the ideal companion to SigmaPlot, but also stands alone as a powerful scientific statistics system.

Operating System: DOS



TableCurve

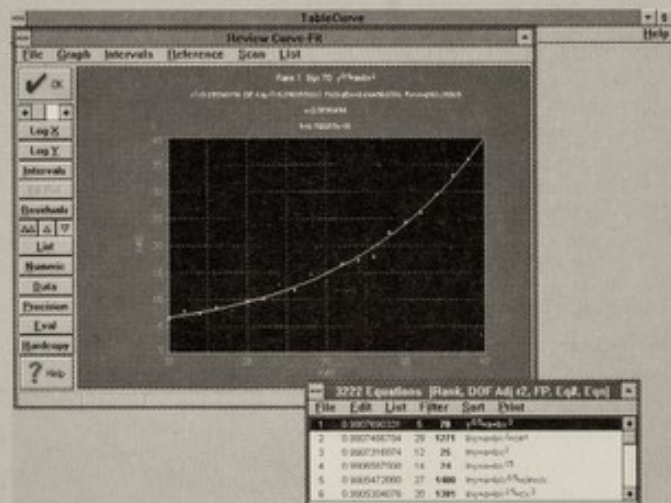
Automated Curve Fitting Software

■ TableCurve offers a truly automated solution to the time-consuming task of curve fitting. Extremely fast and easy-to-use, TableCurve automatically fits and ranks over 3,300 equations to a given x-y dataset, rapidly finding an equation that best describes the data!

■ Users can step through ranked equations individually, viewing graph, residuals and data tables. Groups of functions of interest can be selected for fitting and ranking. Two user-defined equations can be added, fit, and ranked along with the built-in equations. This extensive equation set includes both linear (polynomial, rational, etc.) and non-linear (Gaussian, sigmoidal, etc.) equations. Data may be input from the keyboard, or imported from SigmaPlot, spreadsheet or ASCII text files.

■ TableCurve offers an extensive range of output options for curve fit graphs, data and statistical summaries to printers, plotters, and other programs.

Operating System: DOS, Windows



SigmaScan

Scientific Measurement System

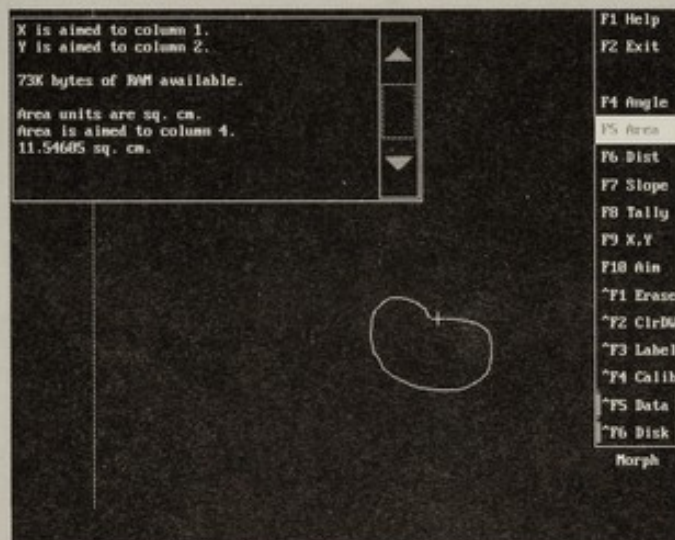
■ With SigmaScan, planimeters, rulers, protractors and calculators are no longer needed. Any flat image (strip-charts, photographs, X-rays, maps and more) can be digitized, measured and analyzed in a matter of seconds. The outline of an object can be traced with the digitizing puck and SigmaScan automatically measures perimeters, areas, angles and x-y coordinates.

■ Once collected, data can be manipulated and analyzed extensively using transforms, look-up tables and other analysis functions - all within the huge (16,000 columns by 64,000 rows) built-in worksheet. Data can be output in both ASCII and binary files for use in other programs such as SigmaPlot and Lotus 1-2-3.

■ Fast, accurate and very easy-to-use, SigmaScan will save hours over manual measurement methods.

Operating System: DOS

Hardware available: Digitizing Tablets



Mocha

Image Analysis Software

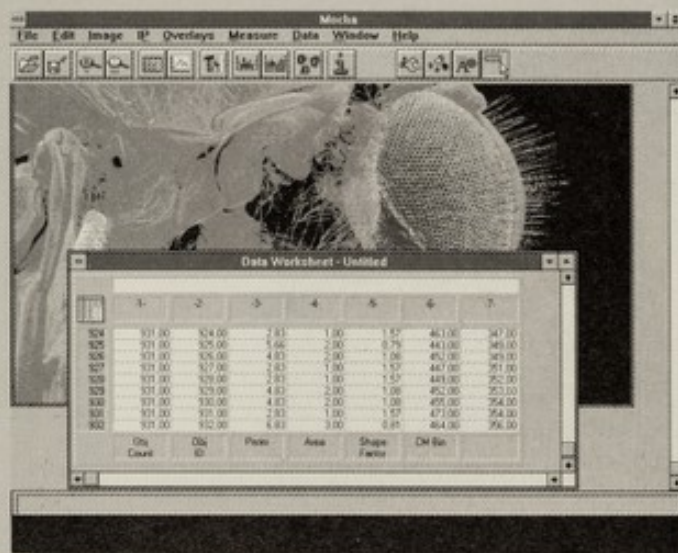
■ Mocha is Jandel Scientific's latest image analysis package. Mocha, a uniquely intuitive software package lets the user process and measure research images, then analyze and present the data simply, quickly, and with a minimum of fuss.

■ Mocha comes with a wide range of easy-to-use image processing and analysis tools to suit the needs of the working scientist. Mocha offers high integration: sophisticated image processing, measurement and annotation tools, a built-in SigmaPlot Windows compatible worksheet, data graphing capabilities, and mathematical transform language for data analysis. With Mocha, the user can measure and quantify over 60,000 objects, find intensities, measure areas, angles, lengths, and distances.

■ Mocha is hardware-independent and an intuitive Microsoft Windows interface ensures great flexibility and ease of use.

Operating System: Windows

Hardware available: Camera, Monitor, Frame Grabber



Java

Video Analysis Software

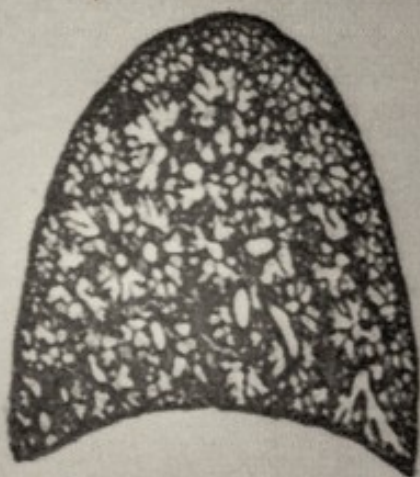
■ Java brings the power of mainframe and mini-computer image analysis to PC computers - at a fraction of the cost.

■ By integrating advanced image processing features with a wide range of data collection and analysis capabilities, Java allows scientists to capture and enhance images, automatically perform a series of measurements, and analyze and output data. Measure grey level intensities, count objects, digitize and measure complex shapes and lines, make morphometric measurements, and more.

■ Java offers a huge data worksheet where data can be extensively analyzed with the built-in transform language. Once analysis is complete, both data and images may be output for use in other programs.

Operating System: DOS

Hardware available: Frame Grabber, Monitor, Camera



PeakFit

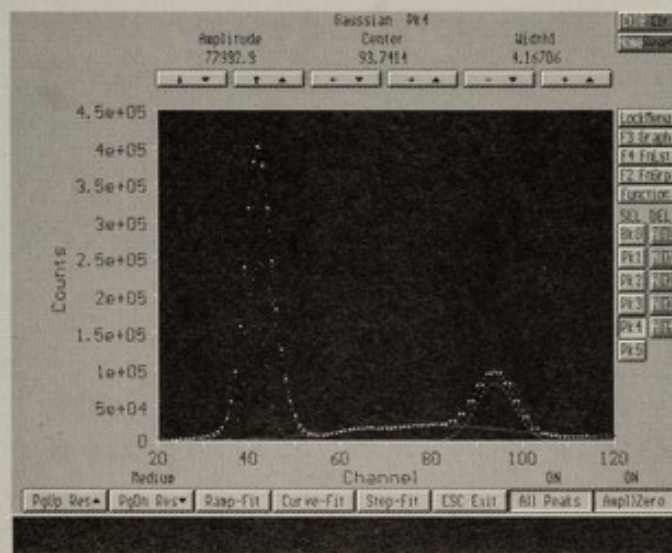
Chromatography/Spectroscopy Analysis Software

■ PeakFit is one of the most powerful software tools available today for chromatographic and spectroscopic data analysis. Using sophisticated techniques, PeakFit effectively detects, quantifies and analyzes hidden peaks in overlapping peak data - greatly enhancing the accuracy of the analysis.

■ PeakFit offers a revolutionary approach, enabling the user to control the curve fit process visually, iteration by iteration, to avoid local minima traps. 30 built-in equations or user-defined functions can be used, using up to 68 adjustable parameters.

■ Once analysis is complete, PeakFit offers an extensive numeric summary, including peak characterization data (areas, amplitude, centers, widths, etc.), system suitability information (peak asymmetry, resolution, column efficiency) and parameter/fit statistics. PeakFit imports a variety of data formats and can output graphs and data directly to printers, plotters, SigmaPlot, word processing and desktop publishing files.

Operating System: DOS



Dr. Stanley White, Biomedical Science, University of Leeds, UK
"An excellent program (SigmaPlot)"

Lawrence A. Jones, Liverpool, UK

"I have only just purchased TableCurve, it is brilliant. It is the best software package that I have ever purchased. The instructions are SUPERB. Well done Jandel!"

Pr. Loïc Capron, Pathologie Vasculaire, Hôpitaux de Paris, France

"... I have already had time to test it (SigmaStat) a little and found that:
1. it makes a perfect companion for SigmaPlot 5.0;
2. it will fulfil all my needs for statistical analyses I have to run routinely in my experimental work. Congratulations for this beautiful achievement...."

Jandel

SCIENTIFIC

● *Since 1982, Jandel Scientific has been making state-of-the-art software for scientists and engineers who use personal computers. Jandel software is used in over 30.000 laboratories worldwide to collect, analyze and present research data.*

● *Our software is designed to provide full use of the computer's power for data analysis while creating more time for the intuitive and scientifically responsible decisions only human insight can offer. Response from our customers directs the development of our products. Therefore your comments and requests are taken seriously.*

● *In 1987, a European headquarters was established to specifically meet the requirements of the European scientists. Our broad range of software and hardware solutions, extensive training seminars, and commitment to service enable our customers to achieve maximum efficiency in minimum time.*

For more information please contact:

**Jandel Scientific GmbH
Schimmelbuschstr. 25
D - 40699 Erkrath**

**Phone: (+49) 2104 / 36098
Fax: (+49) 2104 / 33110**