

Save the Newchurch guinea pigs : born to a life of hell.

Contributors

Save the Newchurch Guinea Pigs (Society)
People for the Ethical Treatment of Animals.

Publication/Creation

Evesham : Save the Newchurch Guinea Pigs, [2001?]

Persistent URL

<https://wellcomecollection.org/works/ka7q28tn>

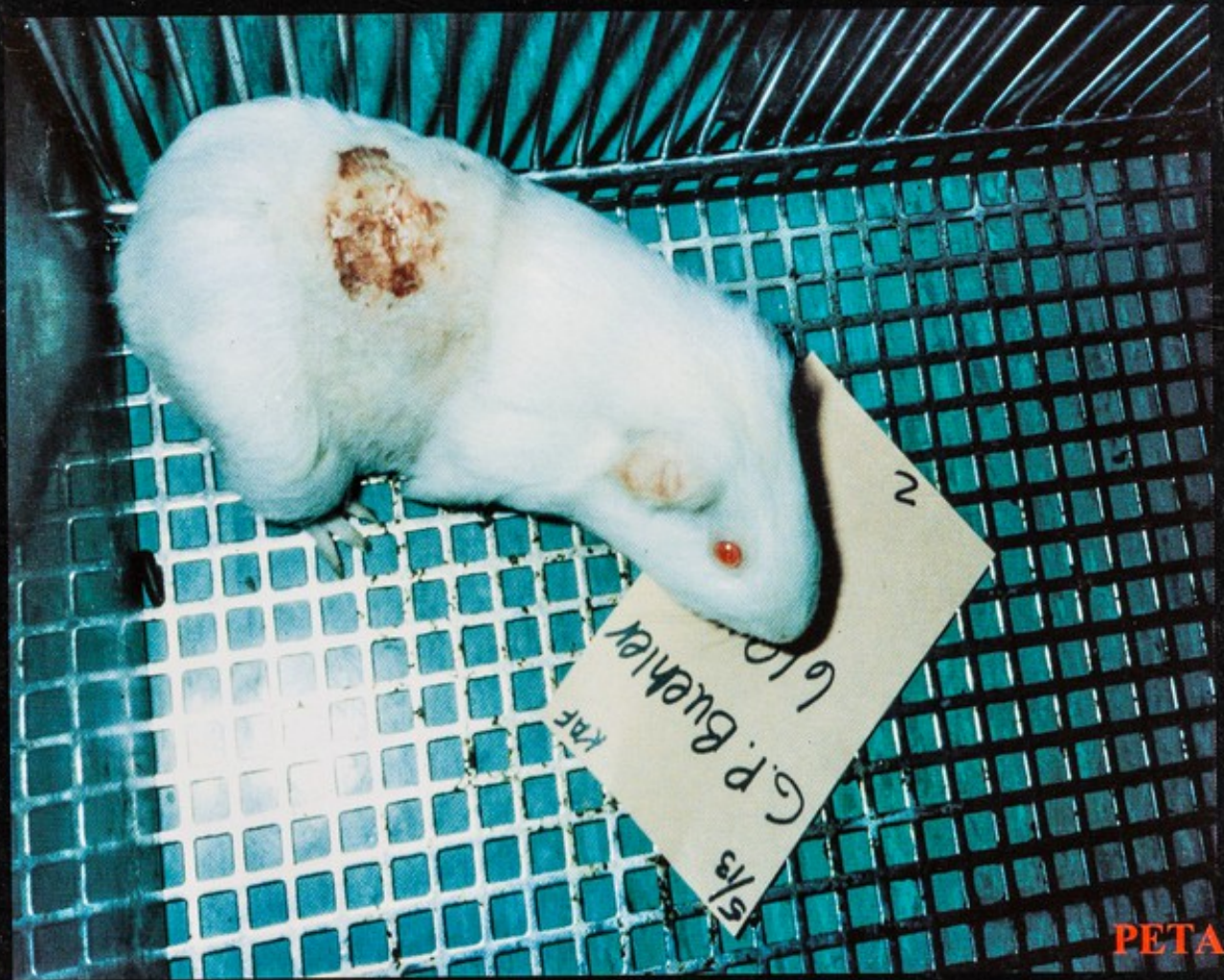
License and attribution

Conditions of use: it is possible this item is protected by copyright and/or related rights. You are free to use this item in any way that is permitted by the copyright and related rights legislation that applies to your use. For other uses you need to obtain permission from the rights-holder(s).



Wellcome Collection
183 Euston Road
London NW1 2BE UK
T +44 (0)20 7611 8722
E library@wellcomecollection.org
<https://wellcomecollection.org>

**SAVE THE
NEWCHURCH GUINEA
PIGS**



PETA

**BORN TO A
LIFE OF HELL**

DEALERS IN DEATH

David Hall and Partners breed albino guinea pigs for vivisection. They are based at 2 sites at Darley Oaks Farm, Newchurch, Nr. Burton-on-Trent, Staffs DE13 8RJ. **Tel 01283 575321, Fax: 01283 575619**

Hidden away in sheds at the back of these sites there are over 10,000 guinea pigs bred to be used in horrific, useless experiments in vivisection laboratories.

HALL'S HELL HOLE

After a raid on the farm by concerned campaigners, video coverage taken in the sheds shows a high mortality rate amongst the guinea piglets, with evidence of distressed mothers killing and eating their young.

The pens were filthy and full of excrement, with the paper work taken from the farm explaining that the pens, containing 9 females to 1 male, are only cleaned once a week. These 'stock pens', where the guinea pigs are bred from for 20-22 months unless 'mothering quality or litter sizes determine that they should be culled', and where many of the guinea pigs spend their entire lives, are just 5ft x 2ft. That is the amount of space they think is suitable for 10 adults and as many as 24 young at any one time. Within these prisons there is nowhere for the guinea pigs to pursue their natural behaviour of hiding, foraging and burrowing. There are so many guinea pigs dying in this hellhole that the bodies have to be removed on a daily basis!

THE GUINEA PIGS' FATE

Once sent to laboratories the guinea pigs can expect to be blinded, maimed, scalded or poisoned all for profit & 'scientific progress' This alleged scientific progress could have killed millions of people if penicillin had been tested on guinea pigs - as penicillin kills guinea pigs.

WHAT YOU CAN DO:

- Turn up to the daily demos, regional weekend demos, Saturday all night vigils, and national demos.
- Spread the word about this disgusting 'business' and our campaign to end it. Leaflets, and factsheets are available (all free - donations appreciated).
- Write to Hall, his suppliers, and his customers. All this info is available in the factsheets and the newsletters.
- You can help by fund-raising, writing letters, and spreading the word around the country about the use of guinea pigs and all animals in cruel and scientifically invalid experiments.

-
- Please keep me informed about the Save The Newchurch Guinea Pigs campaign.
 - I enclose a donation of £..... All money goes towards saving the Newchurch guinea pigs. Payment made out to 'Save the Newchurch Guinea Pigs'.

Name _____

Address _____

Post Code _____

**SAVE THE NEWCHURCH
GUINEA PIGS**

**PO Box 74, Evesham,
Worc's., WR11 5WF.**

Tel: 01902 564734

4/02