

World day for laboratory animals : 24th April: World day for laboratory animals : 25th April: Hyde Park to Earls Court, London, march, exhibition / The National Anti-Vivisection Society Ltd.

Contributors

National Anti-Vivisection Society (Great Britain)

Publication/Creation

London : National Anti-Vivisection Society, [1992]

Persistent URL

<https://wellcomecollection.org/works/mte352c4>

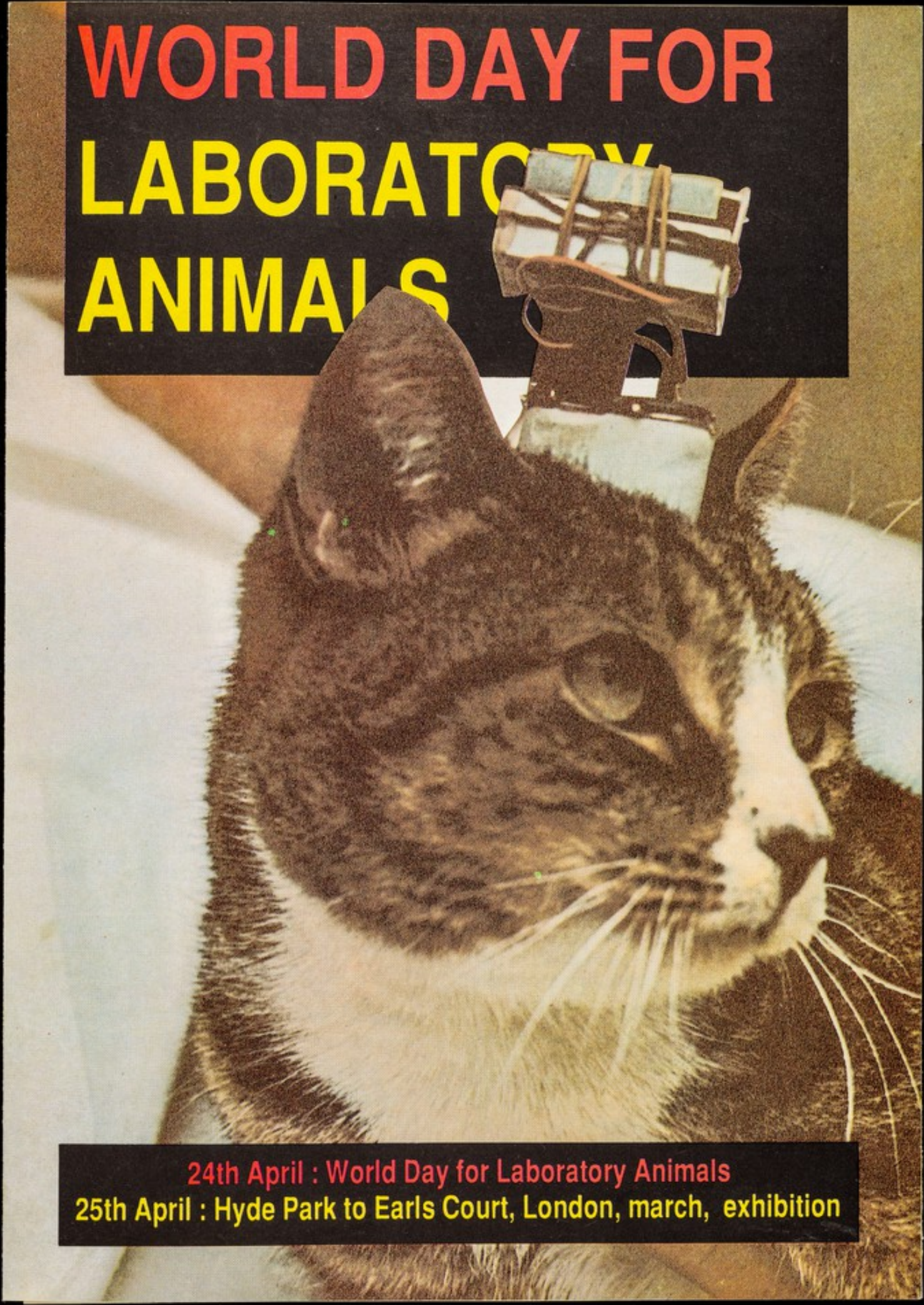
License and attribution

Conditions of use: it is possible this item is protected by copyright and/or related rights. You are free to use this item in any way that is permitted by the copyright and related rights legislation that applies to your use. For other uses you need to obtain permission from the rights-holder(s).



Wellcome Collection
183 Euston Road
London NW1 2BE UK
T +44 (0)20 7611 8722
E library@wellcomecollection.org
<https://wellcomecollection.org>

WORLD DAY FOR LABORATORY ANIMALS



24th April : World Day for Laboratory Animals
25th April : Hyde Park to Earls Court, London, march, exhibition

Every year over 100 million animals in laboratories all over the world are burnt, blinded, scalded, crushed, frozen, mutilated, exposed to radiation and poisoned to death, all in the name of 'science'. Over three million in Britain alone. And for what? For experiments that can never be trusted.

The simple fact is that animals are not like us, they react *differently* to products, drugs and chemicals; they suffer from

different diseases, and artificial disease created in the laboratory is not the same as disease suffered by people in the real world.

Thus, animal experiments are as misleading and unproductive as they are inhuman and sickeningly cruel.

But this suffering is only easy to hide whilst we, the public, allow it to be so:

For it is paid for by us through (some) charitable donations - through our taxes - and through products that we buy from companies who test on animals.

Animal experiments are bad science because the whole concept is wrong.

April 18th to 26th is Black Armband Week,
show you care
wear a special World Day for Lab Animals black armband

**April 24th: Join us in an International Day of
Remembrance for Laboratory Animals,**
wear your black armband,
observe 1 minute's silence at 12 noon

April 25th: London, march, rally, exhibition
see reverse of leaflet for details

Heart Disease

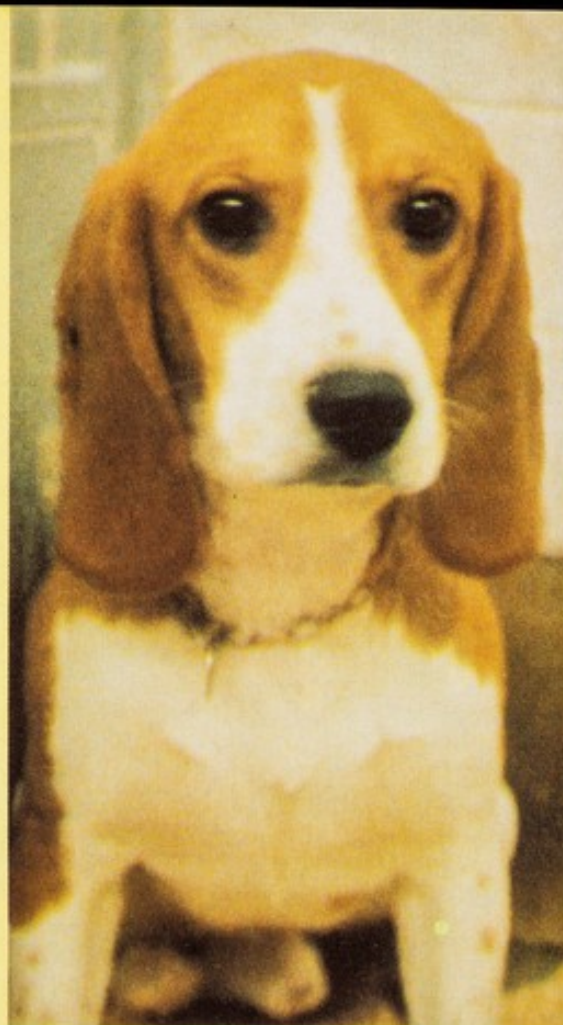
- ☐ Kills one in four people in England and Wales, all of our important knowledge about its causes have been identified by studying people. Heart disease has been linked to fatty foods, high blood pressure, stress, smoking, excessive alcohol; it is not possible to reproduce these factors in laboratory animals.
- ☐ Dogs are popular for heart research, yet their hearts, blood supply, and blood clotting are different. Vivisectors themselves often cite such difficulties as reasons for the unreliability of results from animal models.
- ☐ Heart drugs and heart surgery techniques have been developed without animals.

Cancer

- ☐ Different factors cause cancer in different species, and likewise the effects of anti-cancer drugs differ.
- ☐ Mice are favourite cancer research animals, yet mice normally suffer from a different type of cancer - sarcomas, whilst most human cancers are carcinomas. Artificial cancers in labs are vastly different to spontaneous, or naturally-occurring cancers, and they grow much faster.
- ☐ Most carcinogens (cancer-causers) were first identified by studies of people and their environment e.g. smoking, x-rays, chemicals, foods. Human studies tell us that 80% of cancers are related to factors such as smoking, too much alcohol, over eating, excessive exposure to sunlight, environmental pollution, and so forth.

Examples of Species Differences

- ☐ Penicillin is a useful antibiotic for people. But guinea pigs and Syrian hamsters readily die after penicillin. Florey, the man who purified penicillin, said that it was "lucky chance" that penicillin was not tested on guinea pigs.
- ☐ Morphine calms people and rats, but causes the opposite effect in cats and mice.
- ☐ Aspirin causes birth defects in rats, mice, monkeys, guinea pigs, cats, dogs, but not in people.
- ☐ Tamoxifen was patented as a contraceptive; it is in rats, but in women it increases fertility!
- ☐ Halcion (triazolam), recently withdrawn in the UK. Side effects include: anxiety, paranoid reactions, hallucinations, depression, nightmares, suicidal tendencies, amnesia, blurred vision.
- ☐ All drugs are tested on animals and passed safe for human use before they reach the market. But many have injured or killed people, e.g. Opren, Eraldin, chloramphenicol, Flosint, clioquinol, and many others.



Charities

- ☐ Many people have been shocked at the news that some charities spend their money on animal experiments. 8 charities are now spending their donations on a campaign to promote vivisection, yet they admit that it forms only a minor part of their budget.

The eight charities campaigning under the name Research for Health Charity Group are: Action Research, Cancer Research Campaign, Cystic Fibrosis Research Trust, Multiple Sclerosis Society, Muscular Dystrophy Group, British Heart Foundation, Imperial Cancer Research Fund, Wellcome Trust.

- ☐ Naturally most people want to continue supporting medical research and patient care, but they don't wish to pay for vivisection. The following organisations conduct medical research without the use of animals and/or give direct help to patients:

Children's Research Fund, Bristol Cancer Help Centre, Alzheimers Disease Society, Iris Fund for the Prevention of Blindness, National Back Pain Association, National Society for Research into Allergy, Quest Cancer Test. Write to us for their addresses.



Better Science

- ☐ Animal research is not synonymous with medical or scientific research. A vast amount of medical knowledge has been gained over the years through clinical research, studying people; through research using human tissue, cell, skin, organ cultures, computer technology, and studies of lifestyles, populations, and environment. Progress has been made despite animal experiments, not because of them.
- ☐ People have been led to believe that infectious diseases like polio, smallpox, scarlet fever, TB, pneumonia, tetanus, diphtheria, were only eradicated after animal experiments. But history shows that these diseases had already gone into decline because of the introduction of proper sewage systems, clean water, personal hygiene, food hygiene and better food supplies - before drugs and vaccine programmes were introduced.
- ☐ Anti-vivisectionists are not anti-science, nor anti-progress. We are in favour of better science - more related to real people in the real world and not the unscientific, artificial conditions of the animal laboratory. Far better to take a drug which has been properly tested on relevant human tissue, rather than on an entirely different species. We want *real science*!
- ☐ In fact, through our Lord Dowding Fund for Humane Research we fund scientists conducting research without the use of animals. Projects have included breast cancer, cot deaths, cataracts, kidney dialysis, dental fillings, drugs and replacements for animals in standard safety tests.



Animal Experiments

An investigator from NAVS working undercover in UK laboratories in 1991 witnessed the following:

- ☐ Experiments funded by the Multiple Sclerosis Society:-
In an attempt to mimic MS in people, some of the animals became totally or partially paralysed with their muscles wasting away, and could not keep themselves clean. The experiment is always inconsistent, with the rats all suffering different amounts of paralysis over different periods. Animals do not get MS, so a new condition called EAE (experimental allergic encephalomyelitis) has been created. It has been admitted that: "There are crucial differences between MS and EAE". MS is caused by as yet unidentified genetic & environmental factors - factors which cannot be reproduced in laboratory animals.
- ☐ Experiments funded by the Arthritis & Rheumatism Council:-
Young female rats were injected in the base of the spine with a substance which inflamed their leg joints. This caused swelling, and the animals became crippled, painfully dragging themselves around their cage. Because they were 4 to a tiny cage, they inevitably trod on each other's crippled joints, causing squeals of pain and fights. They were killed after 3 weeks.
After many years of experiments, it has been admitted that experimental arthritis and arthritis in people are different, but the research continues.

References for statements made on this leaflet are available on request. Send an SAE.

Illustration shows back of both T shirts

**VIVISECTION
BARBARIC
WORTHLESS**



FIGHT VIVISECTION



T9: WDLA, Fight Vivi
Sizes: XL, Large
£6.50 (Black or White)

BC2: Black Cap
World Day,
£4.00

CS4: WDLA car sticker 50p
NATIONAL ANTI-VIVISECTION SOCIETY
WORLD DAY APRIL 24

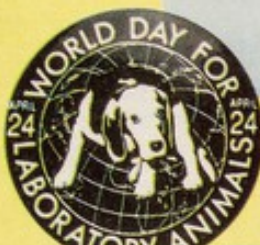
BA: Black Armband
60p



Order Here

Code	Description	Size Colour	Price	Qty	Total
BC2	Baseball cap	-	4.00		
T8	"WDLA" T shirt		6.50		
T9	"Fight Vivi" T shirt		6.50		
B11	White on black badge	-	.30		
B12	Black on white badge	-	.30		
BA	Black armband	-	.60		
bulk discount:					
5-9 @ 55p each					
10-14 50p each					
15+ 45p each					
CS4	Car sticker		.50		
Post & Packing					
Orders up to £5...add £1.00					
£5 to £10.....add £2.50					
£10 to £20.....add £3					
Over £20.....FREE					
Total				£	

T8: World Day
Sizes: XL, Large
£6.50 (Black or White)



B11: World Day
white on black
1", 30p



B12: World Day
black on white
1", 30p

☐ Please send me a World Day Information Pack

I would like to join your Society, and enclose:

☐ ANNUAL MEMBERSHIP £6

☐ LIFE MEMBERSHIP £100

Help us to save Laboratory Animals.
Please send a donation —
they need your help.

I enclose a donation of ☐ £5
☐ £10 ☐ £20 ☐ £50 ☐ Other

Signed: _____ Date: _____

NAME:

(block capitals please)

ADDRESS:

WDLA92

The National Anti-Vivisection Society Ltd
'Ravenside', 261 Goldhawk Road, London, W12 9PE.

April 24th is World Day for Laboratory Animals

wear a black armband : keep a minute's silence at 12 noon

April 25th - London - March, rally, exhibition

1 - 2pm: Assemble inside Hyde Park, south side, near Prince of Wales Gate

2pm: March moves off from Alexandra Gate, along High Street Kensington

4:30pm: Arrive Earls Court Exhibition Centre, London, SW5

5:00pm: Rally, speakers

5:30pm: Fashion Show

6:00pm: Film shows, exhibition, concert

Exhibition stands : fashion : beauty without cruelty - cosmetics, body care :
household products : complementary medicine : non-animal research
exhibition : animal welfare : international anti-vivisection and animal welfare
stands : what YOU can do to help : refreshments :
(phone 081-846 9777 or see press for details)

Note: Earls Court will not be open to the public until 4:30pm

The National Anti-Vivisection Society, 261 Goldhawk Road,
London, W12 9PE. Tel: 081 846 9777

