

XtraVital complete food : super premium / Sherley's Ltd.

Contributors

Sherley's Ltd.
Beaphar (Firm)

Publication/Creation

Haverhill : Sherley's, [ca.2001?]

Persistent URL

<https://wellcomecollection.org/works/a44czfn7>

License and attribution

Conditions of use: it is possible this item is protected by copyright and/or related rights. You are free to use this item in any way that is permitted by the copyright and related rights legislation that applies to your use. For other uses you need to obtain permission from the rights-holder(s).

**wellcome
collection**

Wellcome Collection
183 Euston Road
London NW1 2BE UK
T +44 (0)20 7611 8722
E library@wellcomecollection.org
<https://wellcomecollection.org>

XtraVital food stuffs contain only ingredients of the highest quality. The added alfalfa is rich in proteins and essential amino acids. In addition, it has a high fibre content and contains many vitamins. Energy sources such as fats and sugars, are added to the foods by using peanuts (shelled and unshelled) maize, peas and raisins. XtraVital has been developed with much knowledge, care and precision, and is therefore a healthy and extremely tasty foodstuff for your rodent.

XtraVital

Super Premium

MADE BY:
Beaphar BV
Postbus 7
NL-8100 AA Raalte

DISTRIBUTED BY:
Sherley's LTD
Homefield Road
Haverhill
Suffolk CB9 8QP
Tel.: 01440 715700

89461

XtraVital



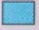



Complete food

Super Premium



XtraVital

Super Premium food for rodents and rabbits

-  Complete Rabbit Food
-  Complete Junior Rabbit Food
-  Complete Guinea Pig Food
-  Complete Hamster Food
-  Complete Rat Food
-  Complete Chinchilla Food

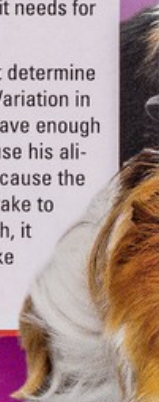
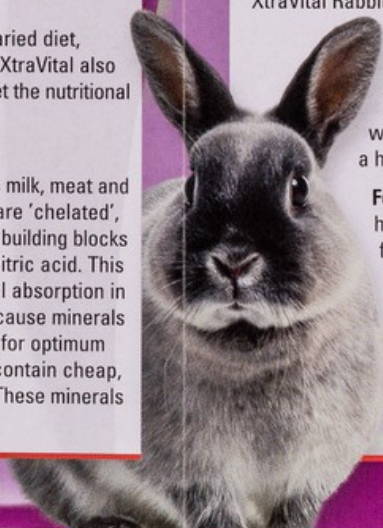
Complete nutrition, but with variety

Interesting food and correct nutrition are very important for the health and vitality of small pets. The XtraVital range of foods offer a complete, well-balanced diet, which has been developed by veterinary surgeons and nutritional experts. Fastidious preparation methods, very high levels of continuous quality control, and a super-premium mixture of the highest quality ingredients make XtraVital the product of choice for all caring owners.

Rabbits and rodents that live in the wild have a very varied diet, selecting from several types of food source each day. XtraVital also contains a multiplicity of high value ingredients that meet the nutritional requirements of each specific species of pet.

Building blocks of the body

In the wild, animals absorb minerals from their mother's milk, meat and fish or vegetables. These naturally occurring minerals are 'chelated', which means that they are bound to protein building blocks (amino acids) or to substances such as citric acid. This ensures perfect, uninterrupted mineral absorption in the intestines, which is important because minerals are just as essential as vitamins for optimum health. Traditional feeds often contain cheap, chemical, 'inorganic' minerals. These minerals



bind themselves to food fibres in the intestines and are absorbed less efficiently. A serious consequence is that these minerals can partially impede each other's natural uptake. The trace elements zinc, iron, manganese, copper and selenium, which are essential to many vital functions, are present in XtraVital in the natural, chelated form.

Resistance

Medical research has shown that the immune system that protects mankind and animals from infectious diseases works less efficiently when there is a chronic lack of body movement.



With rabbits and rodents that are kept as pets, there may well be a reduction in body movement. This is because the animal does not have to search for its food, and because of the absence of natural enemies. XtraVital Super Premium food is enriched with Echinacea extract. Echinacea is a homeopathic product that comes from the plant Echinacea purpurea, and is said to have a very favourable effect on the body's natural resistance.

In addition, MOS (mannan oligosaccharide) has been added to XtraVital foods. The main function of MOS is to provide an antibacterial action in the intestines. MOS, combined with a high roughage content ensures regular and healthy bowel movements, and discourages bacteria from multiplying in the intestines.

XTRAVITAL RABBIT FOOD

Rabbits are plant eaters and have a very varied diet in the wild. They like to eat grasses, young twigs, leaves and other parts of plants. In addition they are very keen on fruit, berries, fungi and buds. In order to match the natural nutritional requirements of rabbits, a super-premium mixture of high value ingredients have been used when composing XtraVital Rabbit Food.



XtraVital Rabbit Food has a low fat content and a suitably high roughage content. Combined with MOS, this ensures very good digestion. The varied composition makes the feed very tasty and desirable. By feeding XtraVital Rabbit Food, your pet will receive the optimum value nutrition that it needs for a healthy and vigorous life.

Feeding advice: On its own, a rabbit cannot determine how much it must eat or what it must eat. Variation in food is very important. Your rabbit should have enough food available throughout the day, because his alimentary canal should always be full. Because the feed is very palatable, your rabbit will take to XtraVital straight away. To start off with, it is advisable to keep track of food uptake and to mix XtraVital with the old feed if

necessary. The daily amount of food that a rabbit needs depends upon its size and weight. Give the amount of food that your rabbit eats up completely in one day. If any food is left over, give less the next day. For a guideline on the amount, look at the feeding table near the end of this folder.

XTRAVITAL JUNIOR RABBIT FOOD

Young rabbits drink milk from their mother until about the sixth or seventh week of life. From the fourth week they also need solid food in addition to their mother's milk. XtraVital Junior Rabbit



Food is tailored to the fast growth and development of young rabbits. It has an appropriate protein and roughage content to stimulate healthy growth and digestion of the growing animal. In addition XtraVital Junior Rabbit Food has a high vitamin A and D3 content for

the proper development of bones and teeth.

Feeding advice: The feeding requirements of a young rabbit increase quickly with time. During the first 12 weeks it is important to build up the amount of feed. After 20 weeks, when your rabbit is full-grown, you can change to XtraVital Rabbit food.

Recommendations: It is important to give your rabbit fresh clean water to drink every day, preferably in a drinking bottle that can be attached to the cage. Rabbits can be kept indoors as well as outside, but they cannot tolerate draughts, damp and direct sunlight. So make sure that an outside hutch is in a sheltered and shady place, and kept at a height of 40 cm above ground during the cold winter months.

You should also give your rabbit enough hay to keep his teeth in good condition.

XTRAVITAL GUINEA PIG FOOD

The composition of Guinea Pig Food is very specific.

Just as in man and apes, a guinea pig cannot make vitamin C in its body, so it is essential that your guinea pig gets this in its food. Vitamin C is destroyed by the action of oxygen and light. By encapsulating it within other ingredients in the mix, XtraVital Guinea Pig Food maintains its Vitamin C content for much longer than most other guinea-pig mixes.



In addition to the extra vitamin C, XtraVital Guinea Pig Food has a high vegetable protein content, which is necessary for the healthy development of your guinea pig, a low fat content to prevent overweight, and an appropriately high roughage content to stimulate the intestinal flora.

Feeding advice: Guinea pigs should be fed twice a day, which matches their natural eating habits. Because the feed is very palatable, your guinea pig will take to it straight away. However, to start of with, it is advisable to keep track of the food uptake and to mix XtraVital with the old feed if necessary.

Recommendations: It is important to give your guinea pig fresh clean water to drink every day. Guinea pigs are rodents so it is important that the incisors (long front teeth) are kept in good condition. The ingredients of XtraVital Guinea Pig Food are composed in their natural form such that the guinea pig is largely satisfied as far as gnawing is concerned. It is advisable to give them enough hay to keep their teeth healthy.

Guinea pigs' teeth continue to grow throughout their lives. Guinea pigs with teeth that have grown too long eventually become unable to eat. Check your guinea pig's teeth regularly and seek veterinary advice if you become at all concerned.

XTRAVITAL HAMSTER FOOD



Hamsters that live in the wild feed on a large variety of foods. They eat all sorts of vegetable matter, such as grains, seeds, grasses, herbs and fruit. In addition they need animal proteins. Insects, worms, larvae, snails, young birds and voles are also often on their menu.

XtraVital Hamster Food has a very varied mixture of ingredients with a relatively high fat content, which provides your hamster's energy requirements. The mixture of hard ingredients satisfies their high gnawing needs. Animal proteins must not be left out of hamster feed, so fresh turkey has been added to XtraVital. It does not contain any sharp ingredients that may damage the cheek pouches. Additionally, it contains other high value ingredients such as alfalfa, raisins, peanuts and carrot flakes.

Feeding advice: The best time to feed hamsters is in the evening when they wake up. This matches their natural eating behaviour.

Recommendations: Hamsters like to hoard. They will, therefore, set up hoards in several places, it is necessary to periodically check these hoards for tainted feed. Your hamster needs fresh, clean water to drink daily. They do not drink much, but can not go without water.



XTRAVITAL RAT FOOD

In the wild, rats eat whatever they can find, such as seeds, grains, fruit and, in particular, food of animal origin. Insects, small mammals, eggs, etc. are often taken. Tame rats should have a very varied and well-balanced diet. Fresh turkey has been added to XtraVital to satisfy the demand for animal protein. No seeds or nuts have been added, to prevent skin problems, and the fat content has been appropriately adjusted.



Feeding advice: XtraVital Rat Food is highly palatable, so your rat will take to it straight away. However, to start off with, it is advisable to keep track of the food uptake and to mix XtraVital with the old feed if necessary. Rats like routine, and so it is a good idea to feed your rat at a set time every day.



Recommendations: Rats need plenty of fresh, clean water to drink, unlike other rodents. A rat should be able to gnaw a lot. The natural ingredients in XtraVital Rat Food satisfy these gnawing requirements completely. It is important to keep a close watch on their teeth, since overgrown teeth can lead to problems.

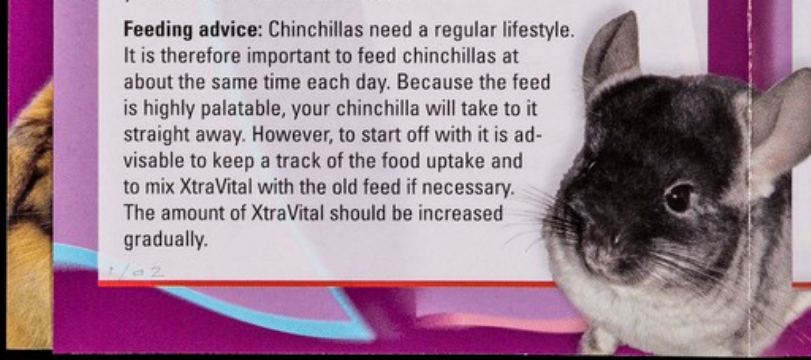
Rats also have an enormous amount of energy and they are very lively. A large space in which they can run about, play and climb is very important.

XTRAVITAL CHINCHILLA FOOD

Originally, chinchillas lived in dry areas where there was little vegetation, feeding on dry grasses, herbs and shrubs. Variety was minimal: a lot of woody fibres, little moisture and no fat. Because of this the chinchilla's alimentary system is very sensitive.

XtraVital Chinchilla Food has an extra high roughage and low fat content, which is completely tailored to the chinchilla's nutritional requirements. A generous amount of raisins provides a low fat form of energy that is easily absorbed. The combination of MOS and a high roughage content ensures optimum development of your chinchilla's intestinal flora.

Feeding advice: Chinchillas need a regular lifestyle. It is therefore important to feed chinchillas at about the same time each day. Because the feed is highly palatable, your chinchilla will take to it straight away. However, to start off with it is advisable to keep a track of the food uptake and to mix XtraVital with the old feed if necessary. The amount of XtraVital should be increased gradually.



Recommendations: A clean and well cared for coat is of vital importance for chinchillas. In the wild, they look after their coats by bathing in sand. Give your chinchilla bathing sand each day so that it can have a regular cleaning session.

Clean, fresh water is necessary every day in spite of the fact that chinchillas do not drink much. In addition it is important to give your chinchilla hay to keep his teeth in good condition.

Chinchillas need extra calcium. If you hang a gnawing stone in the cage it can serve doubly for keeping teeth healthy and to satisfy the need for calcium.



FEEDING ADVICE

The table gives you a general guideline to the amount of feed per animal species. The amount is based upon the average weight of each animal species. If your pet differs in weight or size, then the amount per day should be adjusted.

Animal species	Average weight	Amount of feed needed per day
Rabbit		
Small/mini-Pole, Dutch Dwarf	1,8 kg	60 g
Dutch Lop-ear	1,5 kg	85 g
Rex	4 kg	115 g
Giant rabbit (French Lop-ear, Flemish Giant, Belgian Hare)	8 kg to 12 kg	170 g to 450 g
English Giant	12 kg	340 g to 450 g
Guinea pig	800 to 1250 g	40 g
Hamster	80 to 150 g	5 to 7 g
Rat	350 g	15 to 17 g
Chinchilla	550 g	25 to 30 g

INGREDIENTS AND NUTRITIONAL ANALYSIS

Nutritional analysis	Rabbit	Junior	Guinea pig	Hamster	Rat	Chinchilla
Crude protein	15%	16%	17,2%	16,8%	14,8%	16%
Crude fat	3%	3%	3,2%	6,5%	5,3%	3%
Crude fibres	14%	15%	10%	9,8%	6,7%	15,3%
Crude ash	5,6%	7,3%	6,3%	6,7%	7,6%	7,4%
Moisture	10,8%	10,7%	11,2%	12,7%	11,3%	11%
Ca	0,94%	0,94%	0,8%	0,98%	1,13%	1%
P	0,48%	0,48%	0,5%	0,59%	0,9%	0,55%
Vit. A	6500 IE/kg	6500 IE/kg	24000 IE/kg	6500 IE/kg	6500 IE/kg	15000 IE/kg
Vit. D3	900 IE/kg	900 IE/kg	1000 IE/kg	2500 IE/kg	1000 IE/kg	1500 IE/kg
Vit. E	100 IE/kg	100 IE/kg	100 IE/kg	100 IE/kg	100 IE/kg	100 IE/kg
Cu	8 mg/kg	8 mg/kg	17 mg/kg	6 mg/kg	14 mg/kg	14 mg/kg
Vit. C			500 mg/kg			