

The welfare work of the Royal Air Forces Association.

Contributors

Royal Air Forces Association.

Publication/Creation

London : Royal Air Forces Association, [ca.1990]

Persistent URL

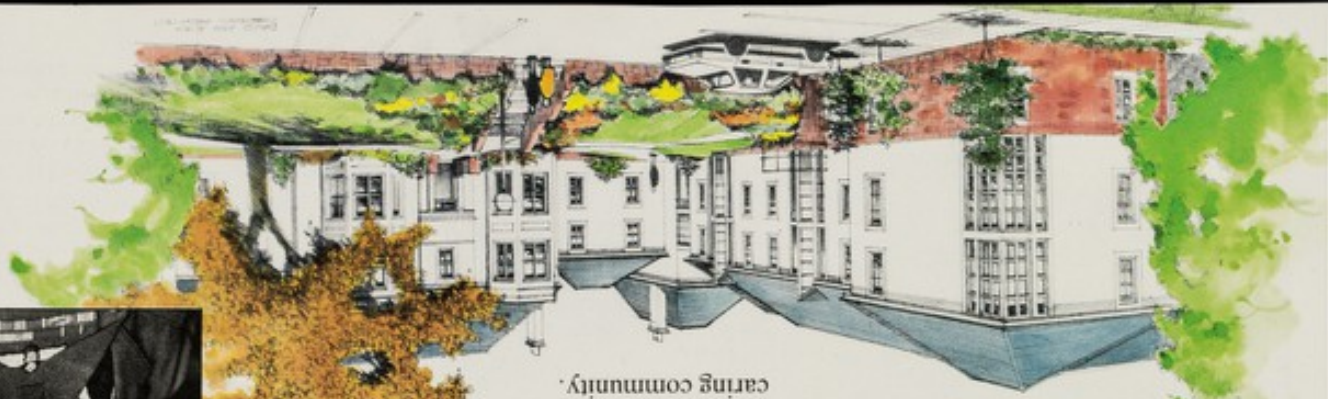
<https://wellcomecollection.org/works/ztw6vtaj>

License and attribution

Conditions of use: it is possible this item is protected by copyright and/or related rights. You are free to use this item in any way that is permitted by the copyright and related rights legislation that applies to your use. For other uses you need to obtain permission from the rights-holder(s).



Wellcome Collection
183 Euston Road
London NW1 2BE UK
T +44 (0)20 7611 8722
E library@wellcomecollection.org
<https://wellcomecollection.org>

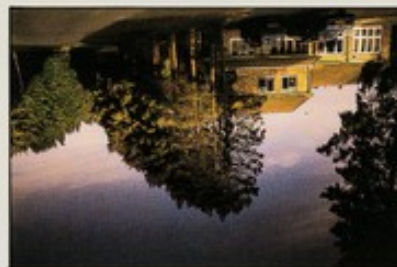


In 1986 The RAF Association purchased the property, and decided to develop a sheltered housing project to honour Lord Dowding's memory, and to meet the growing need for sheltered housing accommodation. Whilst the purpose is to provide sheltered accommodation, Dowding House goes much further: creating homes within a caring community.



R.A.F.A. SHELTERED HOUSING PROJECT—DOWDING HOUSE

Lord Dowding, the Commander-in-Chief of Fighter Command, and the inspiration behind our victory in the Battle of Britain, was born at a prep school in Moffat, Scotland.



The Association's sheltered housing schemes at Storrington, Sussex and Bolton in Lancashire, enable residents to live independent lives, but with support from an on-site warden should they have any difficulties. The sheltered housing is close to local amenities to allow residents easy access to shopping and other facilities.

The residents are able to enjoy the privacy of their own accommodation, together with the communal facilities offered within these projects. Significantly, the comradeship of Service life can be continued into retirement and the welfare support of The RAF Association and other Service Charities can be readily and swiftly available.



R.A.F.A. SHELTERED HOUSING—STORRINGTON AND BOLTON



THE WELFARE WORK of The Royal Air Forces Association

THE ROYAL AIR FORCES ASSOCIATION



The Royal Air Forces Association is a Registered Charity with a membership of 110,000 and over 600 branches worldwide. Its welfare activities extend to all serving and ex-Air Forces men and women and their dependants, backed by full-time and voluntary helpers working closely with the RAF Benevolent Fund. The Association maintains a Home for the disabled, one for convalescents and three Sheltered Housing schemes.

The full time Welfare Officers of the Association also represent individuals at War Pension Tribunals, and offer professional advice on legal matters and housing, as well as handling day to day welfare problems. Last year one voluntary Welfare Officer alone, made over 102 domiciliary visits. He is just one of our 600 voluntary Welfare Officers in this country and overseas who help us with our work. The Association is becoming increasingly involved in Welfare Work, as the needs of those who survived World War II become more urgent. If you would like to help us by becoming a member, fund-raising, helping with our welfare work or making a donation please contact:

**The Secretary General,
Royal Air Forces Association,
43, Grove Park Road,
London W4 3RX.
Tel: 01 994 8504.**

or

**The Appeals Director,
Royal Air Forces Association,
Portland Road, Malvern,
Worcs., WR14 2TA.
Tel: 0684 892505.**



RAFA RESIDENTIAL HOME—SUSSEXDOWN at STORRINGTON

Sussexdown is situated at Storrington, nine miles from Worthing, and stands in 4 acres of grounds. It was originally built as a private residence, and the Association bought the home in 1962. It has been converted to provide accommodation for up to 60 chronically sick or severely disabled residents. A small number of convalescent and recuperative holidays can also be arranged.

Sussexdown is a happy place, run by caring staff who provide a full 24-hour nursing service, physiotherapy and occupational therapy. The aim of Sussexdown is to enable the residents to enjoy as full, varied and independent a life as is possible, given their disabilities.

Although the DHSS is able to assist in meeting some of the costs of residents, the larger part of the costs are met from Welfare funds raised by The RAF Association, and from donations to the Home. No one is turned away because of a lack of means.

Extract from a letter received from disabled new resident at Sussexdown
"It really is a privilege to be in such a lovely place, and to be so well cared for, there can't, I'm sure, be another Home like it in the whole of Britain."

RAFA CONVALESCENT HOME—RICHARD PECK HOUSE

Richard Peck House was opened in 1958. The House is situated in the seaside resort of St Annes-on-Sea, in Lancashire, and is only a short walk from the beach.

Richard Peck House provides convalescence not readily available through the NHS, for serving or ex-Service personnel or their dependants. Convalescents can be accompanied by their spouse, who can also benefit from the rest and relaxation provided. The House can accommodate up to 22 persons, and offers a very high standard of comfort.

Richard Peck House has earned a reputation as one of the finest Convalescent Homes in the Country, and those who stay there return home rested and restored to good health. The costs of convalescence are normally met in part by individual or Branch contributions, and in part by the Welfare funds raised by The RAF Association. Again, no one is turned away because of a lack of means.

Extract from a letter received from an ex-member of the Womens Royal Air Force after a period of convalescence at Richard Peck House

"It was my good fortune to be given a period of convalescence at Richard Peck House after major surgery. It was so nice and restful there with everyone being so kind. I have returned home feeling much better and of course, will be ever grateful to The RAF Association. I find it very comforting to know the Association is there when I need help and advice."

