

A man walking. Collotype after Eadweard Muybridge, 1887.

Contributors

Muybridge, Eadweard, 1830-1904.
University of Pennsylvania.

Publication/Creation

[Philadelphia] : [University of Pennsylvania], 1887 ([Philadelphia] : [The Photo-gravure Company], 1887)

Persistent URL

<https://wellcomecollection.org/works/wrt55hpp>

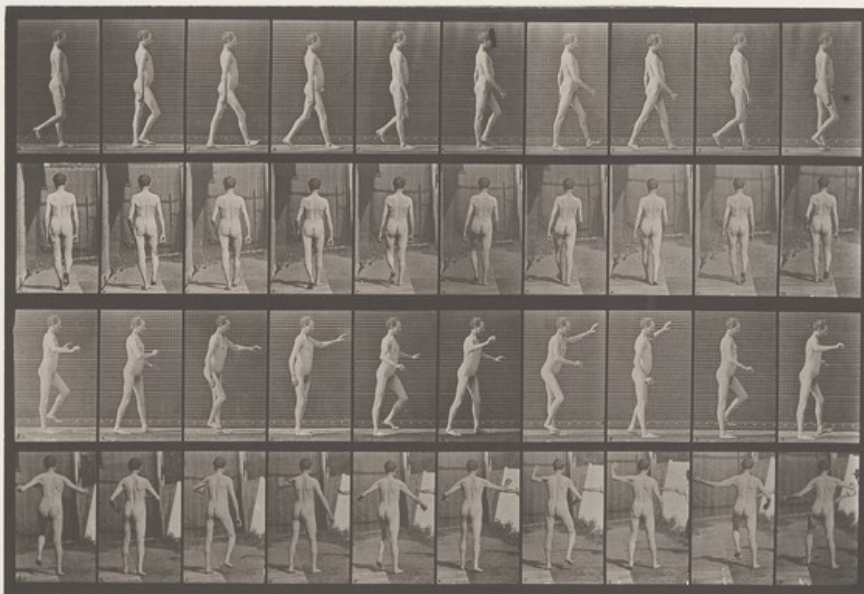
License and attribution

This work has been identified as being free of known restrictions under copyright law, including all related and neighbouring rights and is being made available under the Creative Commons, Public Domain Mark.

You can copy, modify, distribute and perform the work, even for commercial purposes, without asking permission.

**wellcome
collection**

Wellcome Collection
183 Euston Road
London NW1 2BE UK
T +44 (0)20 7611 8722
E library@wellcomecollection.org
<https://wellcomecollection.org>



ANIMAL LOCOMOTION. PLATE 315

Copyright, 1887, by EDWARD MEYERIDGE. All rights reserved.