

**Sixteen feet in profile, of women and men: a parody of phrenology.
Coloured etching.**

Publication/Creation

[Edinburgh?], [ca. 1820?]

Persistent URL

<https://wellcomecollection.org/works/wadn7xg3>

License and attribution

You have permission to make copies of this work under a Creative Commons, Attribution license.

This licence permits unrestricted use, distribution, and reproduction in any medium, provided the original author and source are credited. See the Legal Code for further information.

Image source should be attributed as specified in the full catalogue record. If no source is given the image should be attributed to Wellcome Collection.



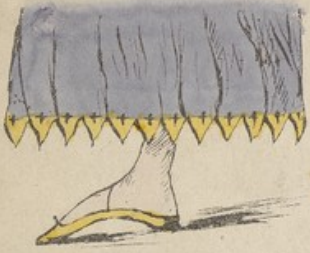
Wellcome Collection
183 Euston Road
London NW1 2BE UK
T +44 (0)20 7611 8722
E library@wellcomecollection.org
<https://wellcomecollection.org>

TOE-TOLOGY—versus—PHRENOLOGY.—

A Course of Lectures to be delivered (at the "Foot" of Arthur's Seat)

on the 1st of April,

To prove that there is more expression in the FOOT, than in the HEAD. —



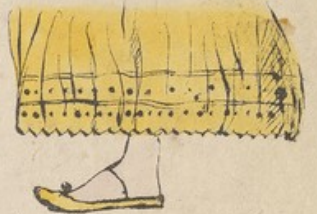
Gossip-pativeness—very full.



Large, Flirtology—



Blue-socking-itiveness—immense.



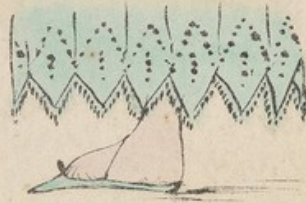
Cheap-Shoe-Shop-itiveness.



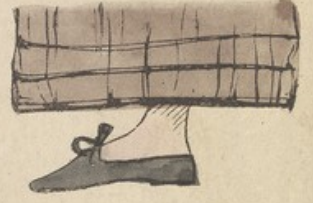
Charity-Sale-itiveness, &
Philo-Incushion-itiveness.



Waltz-itiveness large, &
Philo-Galopadeitiveness, immense.



Corn-ology—very full—



Philo-Pedestrian-itiveness
largely developed.



Temperance-itiveness—very small.



Thant-ology & Destructiveness—large.



Anti-Reform-itiveness and
Club-ology—prodigious—



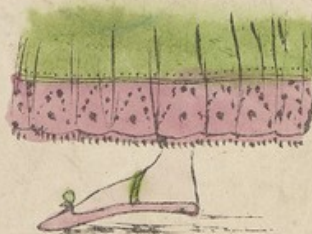
Mazurka-itiveness—moderate.



Sloven-ness—pretty full.



Exclusiveness—immense



Domestic-itiveness—rather small



Combativeness—very large